

AMENDED LANDSCAPE PLAN

CENTERPOINTE APARTMENTS PHASE 3

Town of Canandaigua
Ontario County, New York

Planning Board Review
January 24, 2022

Applicant



Landscape Architect

Sue
Steele
Landscape
Architecture
PLLC

Project Background

May 2016

July 2022

September 2022

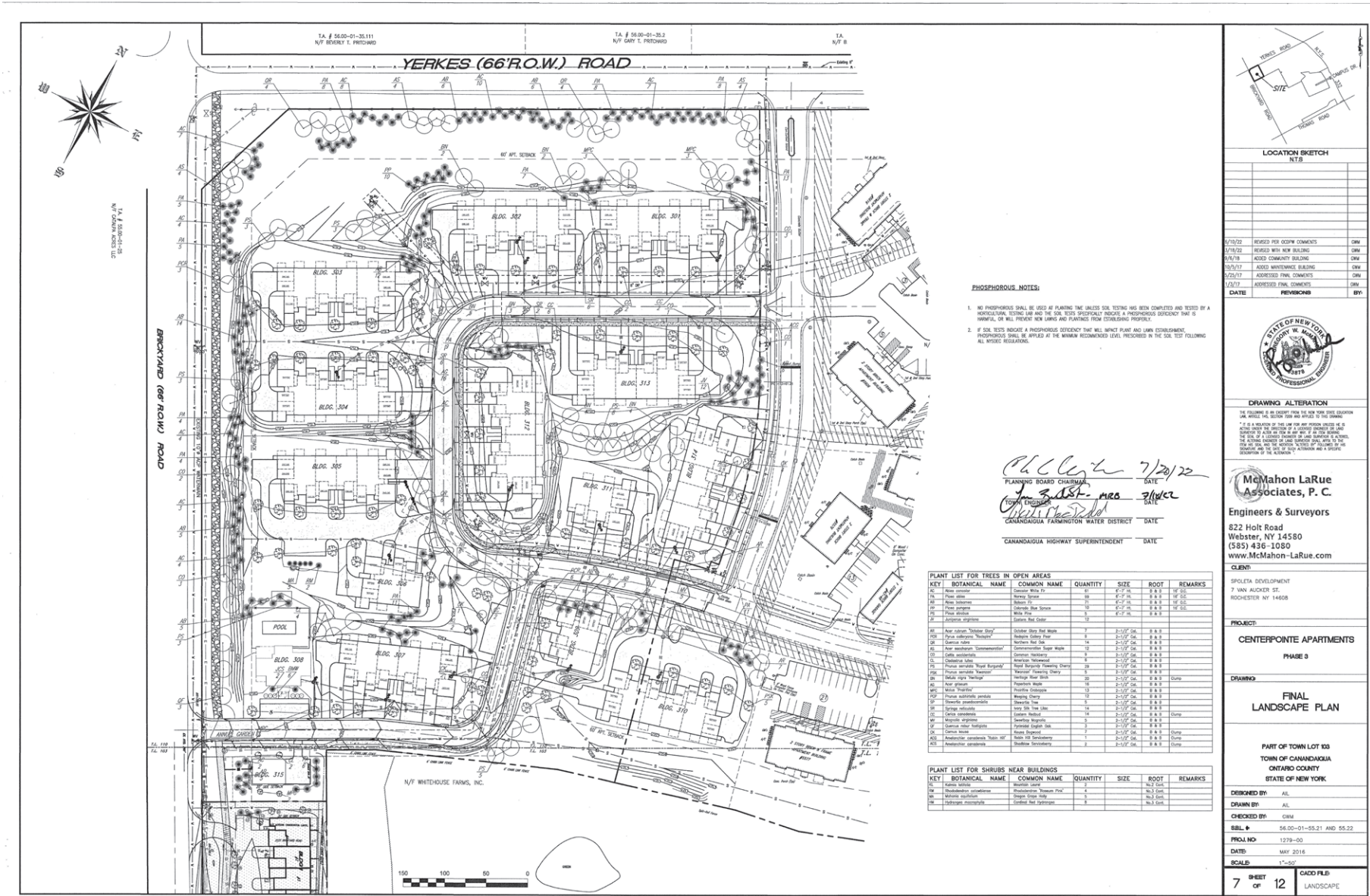
Landscape Plan

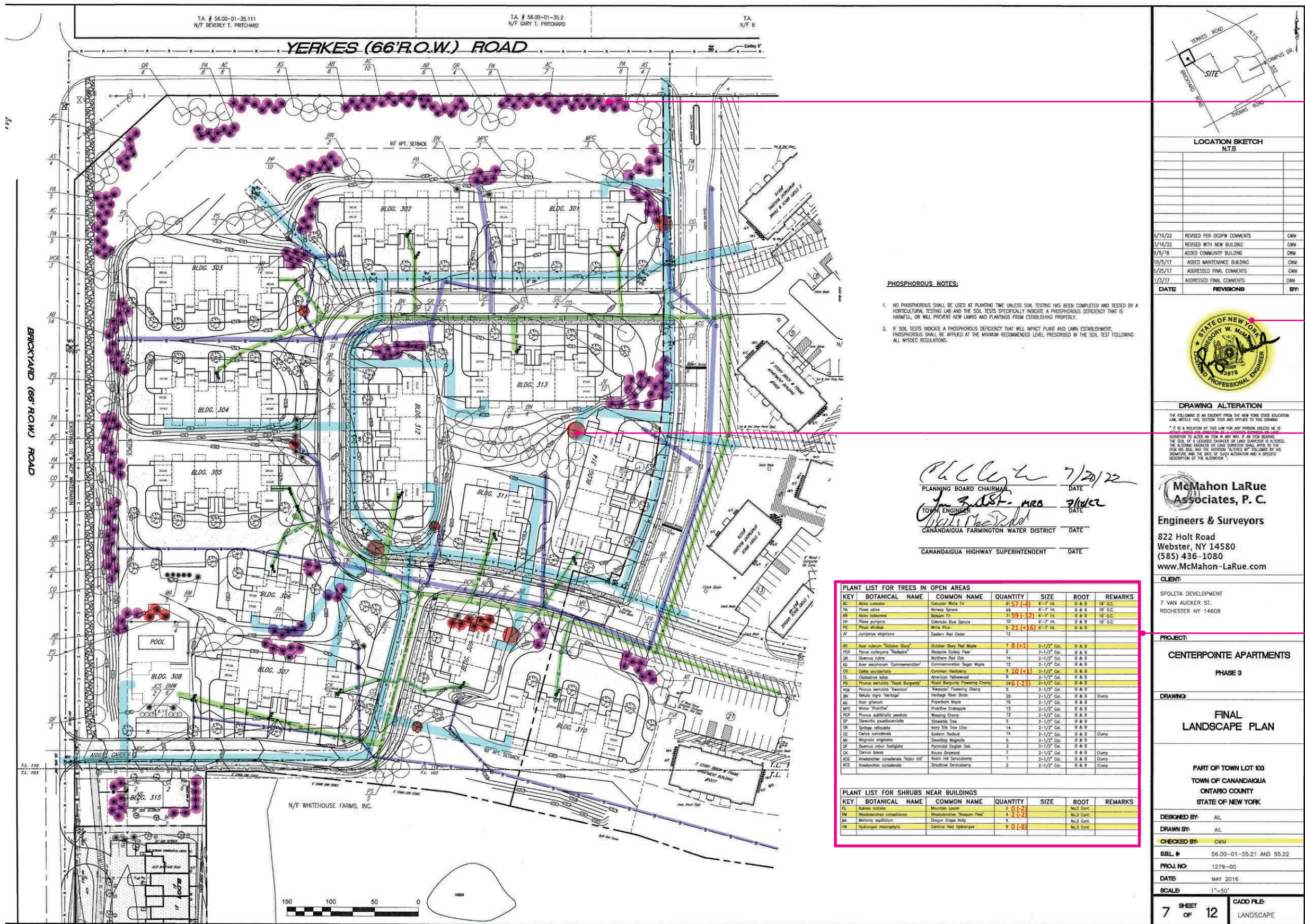
Site Plan Approval

Contractor Coordination



- Expressed concern with tree species and landscape management.
- Landscape Architect engaged to assess and make recommendations.
- Prepared revised Landscape Plan





Plant Spacing Issues

Sealed by Engineer

Plant Location Conflicts
(utilities/structures)

Plant Quantity Errors



Evergreen Tree Spacing
(density and plant health/
viability)

Plant Symbols not reflective
of tree scale

KEY	BOTANICAL NAME	COMMON NAME	QUANTITY	SIZE	ROOT	REMARKS
AC	Abies concolor	Concolor White Fir	61	6"-7" HL	B & B	16' O.C.
PA	Picea canadensis	Norway Spruce	99	6"-7" HL	B & B	16' O.C.
AB	Abies balsamea	Balsam Fir	71	6"-7" HL	B & B	16' O.C.
PP	Picea pungens	Colorado Blue Spruce	10	6"-7" HL	B & B	16' O.C.
PS	Pinus strobus	White Pine	5	6"-7" HL	B & B	
JV	Juniperus virginiana	Eastern Red Cedar	12			
AR	Acer rubrum 'October Glory'	October Glory Red Maple	7	2-1/2" Cal.	B & B	
PCR	Pinus corymbosa 'Fastigiate'	Redspire Colony Pine	8	2-1/2" Cal.	B & B	
QR	Quercus rubra	Northern Red Oak	14	2-1/2" Cal.	B & B	
AS	Acer saccharum 'Commemoratum'	Commemoratum Sugar Maple	12	2-1/2" Cal.	B & B	
CO	Celtis occidentalis	Common Hackberry	9	2-1/2" Cal.	B & B	
CL	Cladonia lutea	American Yellowwood	6	2-1/2" Cal.	B & B	
PS	Prunus serrulata 'Royal Burgundy'	Royal Burgundy Flowering Cherry	29	2-1/2" Cal.	B & B	
PSK	Prunus serrulata 'Kwanzan'	'Kwanzan' Flowering Cherry	5	2-1/2" Cal.	B & B	
BN	Betula nigra 'Heritage'	Heritage River Birch	20	2-1/2" Cal.	B & B	Clump
AC	Acer glabrum	Paperbark Maple	16	2-1/2" Cal.	B & B	
MPC	Morus 'Prolifera'	Prolifera Crabapple	13	2-1/2" Cal.	B & B	
PCR	Prunus subhirtella pendula	Weeping Cherry	12	2-1/2" Cal.	B & B	
SP	Stewartia pseudocornuta	Stewartia Tree	5	2-1/2" Cal.	B & B	
SR	Syringa reticulata	Ivory Silk Tree Lilac	14	2-1/2" Cal.	B & B	
CC	Cercis canadensis	Eastern Redbud	14	2-1/2" Cal.	B & B	Clump
MV	Magnolia virginiana	Sweetbay Magnolia	5	2-1/2" Cal.	B & B	
QF	Quercus robur fastigiata	Pyramidal English Oak	3	2-1/2" Cal.	B & B	
OK	Cornus kousa	Kousa Dogwood	7	2-1/2" Cal.	B & B	Clump
ACG	Amelanchier canadensis 'Robin Hill'	Robin Hill Serviceberry	1	2-1/2" Cal.	B & B	Clump
ACG	Amelanchier canadensis	Shadblow Serviceberry	2	2-1/2" Cal.	B & B	Clump

KEY	BOTANICAL NAME	COMMON NAME	QUANTITY	SIZE	ROOT	REMARKS
KL	Kalmia latifolia	Mountain Laurel	2		No.2 Cont.	
RM	Rhododendron catesbaeanse	Rhododendron 'Roseum Pink'	4		No.3 Cont.	
MA	Mahonia aquifolium	Oregon Grape Holly	5		No.3 Cont.	
HM	Hydrangea macrophylla	Conical Red Hydrangea	8		No.3 Cont.	

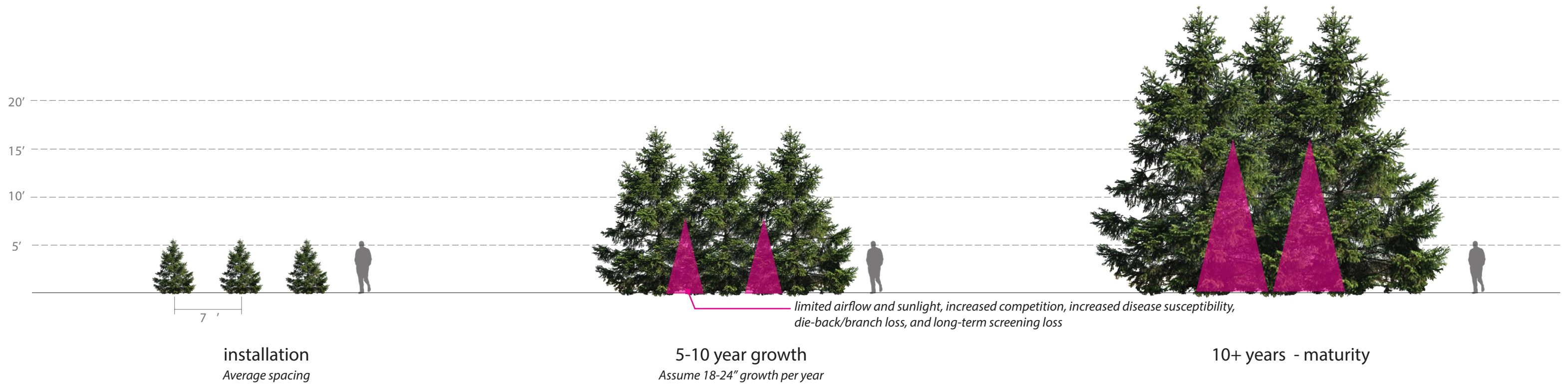
High risk species diversity
imbalance, 3 species
constitute 54% of trees

(9) Species not
recommended (disease
susceptibility, availability, or
invasive species)

Minimal/no building unit
plantings.



Sue Steele Landscape Architecture, PLLC



current evergreen tree spacing



proposed evergreen tree spacing



PLANTING NOTES

- PHOSPHOROUS SHALL NOT BE USED UNLESS SOIL TESTS INDICATE A PHOSPHOROUS DEFICIENCY THAT WILL PREVENT PROPER PLANT AND LAWN ESTABLISHMENT. IF DEEMED NECESSARY, PHOSPHOROUS APPLICATION SHALL BE LIMITED TO THE MINIMUM RECOMMENDED RATES AND IN ACCORDANCE WITH ALL NYS DEC REGULATIONS.
- CONTRACTOR SHALL VERIFY ACTUAL GRADE ELEVATIONS, SERVICE AND UTILITY LOCATIONS, AND DIMENSIONS OF PLANTINGS AND CONSTRUCTION CONTIGUOUS WITH NEW PLANTINGS BY FIELD MEASUREMENTS BEFORE PROCEEDING WITH PLANTING WORK.
- PLANTING SOIL MEDIUM SHALL BE FOUR PARTS TOPSOIL (80%) AND ONE PART COMPOST (20%), BLENDED THOROUGHLY. THE RATIO OF TOPSOIL TO COMPOST IS SUBJECT TO CHANGE BASED ON THE TESTING RESULTS FOR THE TOPSOIL.**
- TOPSOIL:** ALL IMPORTED OR STOCKPILED EXISTING SOIL MATERIAL SHALL BE:
 - USDA LOAM, SANDY CLAY LOAM, OR SANDY LOAM, WITH CLAY CONTENT BETWEEN 15 AND 25%, AND A COMBINED CLAY/SILT CONTENT OF NO MORE THAN 55%.
 - pH VALUE SHALL BE BETWEEN 5.5 AND 7.0
 - PERCENT ORGANIC MATTER OF 2.0% TO 5.0% BY DRY WEIGHT.
 - SOLUBLE SALT LEVEL LESS THAN 2 mmol/cm.
- COMPOST:** ALL COMPOST USED WITHIN BED PREPARATION MUST BE:
 - AGED AT LEAST 9 MONTHS AT TEMPERATURES SUFFICIENT TO BREAK DOWN ALL WOODY FIBRES, SEEDS, AND LEAF STRUCTURES.
 - FREE OF TOXIC MATERIALS AT LEVELS THAT ARE HARMFUL TO PLANTS OR HUMANS.
 - DERIVED FROM WOOD AND OTHER PLANT BASED MATERIALS, BLENDED WITH MANURE BASED MATERIALS DESIGNED TO PRODUCE COMPOST HIGH IN FUNGAL MATERIAL.
 - HAVE A pH BETWEEN 5.5 AND 8.0.
 - MAXIMUM SOLUBLE SALT OF 5 dS/M
 - MOISTURE CONTENT OF 30% TO 60%, WET WEIGHT BASIS.
 - PARTICLE SIZE, DRY WEIGHT BASIS, WITH 98% PASSING THROUGH 3/4-INCH SIEVE.
- SOIL COMPACTION:** ALL PREPARED PLANTING BEDS SHALL HAVE ACCEPTABLE COMPACTION LEVELS FOR PLANT GROWTH AS MEASURED IN THE FIELD USING PENETRATION RESISTANCE METHOD.
 - ACCEPTABLE COMPACTION OF FULL DEPTHS OF PLANTING AREAS SHALL BE BETWEEN 75 AND 250 PSI.
 - LIMITED AREAS OF ~300 PSI COMPACTION ARE ACCEPTABLE WHERE OBSERVABLE ROOT ZONES INTERFERE WITH NEW BED PREPARATION.
 - AREAS ABOVE 400 PSI ARE UNACCEPTABLE AND SHALL BE REMEDIATED TO ACCEPTABLE LEVELS.
- CONTRACTOR SHALL LAY OUT INDIVIDUAL TREE AND SHRUB LOCATIONS AND PLANTING AREAS.
- ALL PLANTS MUST MEET OR EXCEED THE STANDARDS OUTLINED IN THE CURRENT EDITION OF ANSI Z60.1, THE AMERICAN STANDARD FOR NURSERY STOCK.
- ALL PLANTING BEDS SHALL RECEIVE 3" OF DOUBLE GROUND SHREDDED HARDWOOD BARK MULCH.
- ALL PLANTS SHALL BE GUARANTEED FOR A PERIOD OF ONE YEAR FROM THE DATE OF ACCEPTANCE BY THE OWNER. IN THE EVENT OF PLANT FAILURE THE CONTRACTOR SHALL BE RESPONSIBLE FOR REPLACING PLANT MATERIAL WITHIN WARRANTY PERIOD AT NO COST TO OWNER.

PHASE 3 - TREE PLANTING SCHEDULE

Key	QTY	Botanic Name	Common Name	Root / Cont.	Size	Spacing	Notes
PHASE 3 - TREES							
AC	28	Abies concolor	White Fir	B&B	6' Ft	As Shown	
AG	14	Acer griseum	Paperbark Maple	B&B	2" Cal.	As Shown	
AR	12	Acer rubrum 'October Glory'	October Glory Red Maple	B&B	2.5" Cal.	As Shown	
AS	8	Acer saccharum 'Green Mountain'	Green Mountain Sugar Maple	B&B	2.5" Cal.	As Shown	
AL	9	Amelanchier laevis 'Cumulus'	Cumulus Allegheny Serviceberry	B&B	1.5-2" Cal.	As Shown	Tree Form
AX	4	Amelanchier x grandiflora 'Autumn Brilliance'	Autumn Brilliance Apple Serviceberry	B&B	1.5-2" Cal.	As Shown	Tree Form
BN	12	Betula nigra 'Cully' (Heritage)	Heritage River Birch	B&B	2.5" Cal.	As Shown	Mix of Single / Clump
CO	3	Celtis occidentalis	Common Hackberry	B&B	2.5" Cal.	As Shown	
CC	6	Cercis canadensis	Eastern Redbud	B&B	1.5-2" Cal.	As Shown	
CK	5	Cornus kousa	Kousa Dogwood	B&B	1.5-2" Cal.	As Shown	Tree Form
GB	10	Ginkgo biloba 'Magyar'	Ginkgo / Maidenhair Tree	B&B	2.5" Cal.	As Shown	
GT	2	Gleditsia triacanthos f. inermis 'Skycole'	Skyline Thornless Honeylocust	B&B	2.5" Cal.	As Shown	
MP	11	Malus 'Prairifire'	Prairifire Crabapple	B&B	1.5-2" Cal.	As Shown	
PA	26	Picea abies	Norway Spruce	B&B	6 Ft	As Shown	
PG	31	Picea glauca	White Spruce	B&B	6 Ft	As Shown	
PP	17	Picea pungens 'Hoopsii'	Hoopsii Blue Spruce	B&B	5 Ft	As Shown	
PS	7	Pinus strobus	White Pine	B&B	6 Ft	As Shown	
QB	8	Quercus bicolor	Swamp White Oak	B&B	2.5" Cal.	As Shown	
QM	2	Quercus macrocarpa	Bur Oak	B&B	2.5" Cal.	As Shown	
QP	2	Quercus palustris	Pin Oak	B&B	2.5" Cal.	As Shown	
QF	5	Quercus robur 'Fastigiata'	Fastigate English Oak	B&B	2.5" Cal.	As Shown	
QR	3	Quercus rubra	Red Oak	B&B	2.5" Cal.	As Shown	
SR	12	Syringa reticulata 'Ivory Silk'	Japanese Tree Lilac	B&B	2" Cal.	As Shown	
TP	19	Thuja plicata 'Green Giant'	Green Giant Western Red Cedar	B&B	6 Ft	As Shown	
TC	4	Tilia cordata 'Greenspire'	Greenspire Littleleaf Linden	B&B	2.5" Cal.	As Shown	
ZS	5	Zelkova serrata 'Green Vase'	Green Vase Japanese Zelkova	B&B	2.5" Cal.	As Shown	

Key Revisions

- Remove planting conflicts (utilities and structures)
- Increased species diversity
- Removal of invasive species
- Increased tree spacing for tree health and longevity
- Reduce tree quantity and increased shrub plantings

2016 Approved Plan: 441 Trees, 7 Shrubs/Perennials

Proposed Plan: 265 Trees, 436 Shrubs/Perennials





PLANTING NOTES

- PHOSPHOROUS SHALL NOT BE USED UNLESS SOIL TESTS INDICATE A PHOSPHOROUS DEFICIENCY THAT WILL PREVENT PROPER PLANT AND LAWN ESTABLISHMENT. IF DEEMED NECESSARY, PHOSPHOROUS APPLICATION SHALL BE LIMITED TO THE MINIMUM RECOMMENDED RATES AND IN ACCORDANCE WITH ALL NYS DEC REGULATIONS.
- CONTRACTOR SHALL VERIFY ACTUAL GRADE ELEVATIONS, SERVICE AND UTILITY LOCATIONS, AND DIMENSIONS OF PLANTINGS AND CONSTRUCTION CONTIGUOUS WITH NEW PLANTINGS BY FIELD MEASUREMENTS BEFORE PROCEEDING WITH PLANTING WORK.
- PLANTING SOIL MEDIUM SHALL BE FOUR PARTS TOPSOIL (80%) AND ONE PART COMPOST (20%).** BLENDED THOROUGHLY. THE RATIO OF TOPSOIL TO COMPOST IS SUBJECT TO CHANGE BASED ON THE TESTING RESULTS FOR THE TOPSOIL.
 - USDA LOAM, SANDY CLAY LOAM, OR SANDY LOAM, WITH CLAY CONTENT BETWEEN 15 AND 25%, AND A COMBINED CLAY/SILT CONTENT OF NO MORE THAN 55%.
 - pH VALUE SHALL BE BETWEEN 5.5 AND 7.0
 - PERCENT ORGANIC MATTER OF 2.0% TO 5.0% BY DRY WEIGHT.
 - SOLUBLE SALT LEVEL LESS THAN 2 mmol/cm.
- COMPOST:** ALL COMPOST USED WITHIN BED PREPARATION MUST BE:
 - AGED AT LEAST 9 MONTHS AT TEMPERATURES SUFFICIENT TO BREAK DOWN ALL WOODY FIBRES, SEEDS, AND LEAF STRUCTURES.
 - FREE OF TOXIC MATERIALS AT LEVELS THAT ARE HARMFUL TO PLANTS OR HUMANS.
 - DERIVED FROM WOOD AND OTHER PLANT BASED MATERIALS, BLENDED WITH MANURE BASED MATERIALS DESIGNED TO PRODUCE COMPOST HIGH IN FUNGAL MATERIAL.
 - HAVE A pH BETWEEN 5.5 AND 8.0.
 - MAXIMUM SOLUBLE SALT OF 5 dS/M
 - MOISTURE CONTENT OF 30% TO 60%, WET WEIGHT BASIS.
 - PARTICLE SIZE, DRY WEIGHT BASIS, WITH 98% PASSING THROUGH 3/4-INCH SIEVE.
- SOIL COMPACTION:** ALL PREPARED PLANTING BEDS SHALL HAVE ACCEPTABLE COMPACTION LEVELS FOR PLANT GROWTH AS MEASURED IN THE FIELD USING PENETRATION RESISTANCE METHOD.
 - ACCEPTABLE COMPACTION OF FULL DEPTHS OF PLANTING AREAS SHALL BE BETWEEN 75 AND 250 PSI.
 - LIMITED AREAS OF ~300 PSI COMPACTION ARE ACCEPTABLE WHERE OBSERVABLE ROOT ZONES INTERFERE WITH NEW BED PREPARATION.
 - AREAS ABOVE 400 PSI ARE UNACCEPTABLE AND SHALL BE REMEDIATED TO ACCEPTABLE LEVELS.
- CONTRACTOR SHALL LAY OUT INDIVIDUAL TREE AND SHRUB LOCATIONS AND PLANTING AREAS.
- ALL PLANTS MUST MEET OR EXCEED THE STANDARDS OUTLINED IN THE CURRENT EDITION OF ANSI Z60.1, THE AMERICAN STANDARD FOR NURSERY STOCK.
- ALL PLANTING BEDS SHALL RECEIVE 3" OF DOUBLE GROUND SHREDDED HARDWOOD BARK MULCH.
- ALL PLANTS SHALL BE GUARANTEED FOR A PERIOD OF ONE YEAR FROM THE DATE OF ACCEPTANCE BY THE OWNER. IN THE EVENT OF PLANT FAILURE THE CONTRACTOR SHALL BE RESPONSIBLE FOR REPLACING PLANT MATERIAL WITHIN WARRANTY PERIOD AT NO COST TO OWNER.

PHASE 3 - TREE PLANTING SCHEDULE

Key	QTY	Botanic Name	Common Name	Root / Cont.	Size	Spacing	Notes
PHASE 3 - TREES							
AC	28	Abies concolor	White Fir	B&B	6' Ft	As Shown	
AG	14	Acer griseum	Paperbark Maple	B&B	2" Cal.	As Shown	
AR	12	Acer rubrum 'October Glory'	October Glory Red Maple	B&B	2.5" Cal.	As Shown	
AS	8	Acer saccharum 'Green Mountain'	Green Mountain Sugar Maple	B&B	2.5" Cal.	As Shown	
AL	9	Amelanchier laevis 'Cumulus'	Cumulus Allegheny Serviceberry	B&B	1.5-2" Cal.	As Shown	Tree Form
AX	4	Amelanchier x grandiflora 'Autumn Brilliance'	Autumn Brilliance Apple Serviceberry	B&B	1.5-2" Cal.	As Shown	Tree Form
BN	12	Betula nigra 'Cully' (Heritage)	Heritage River Birch	B&B	2.5" Cal.	As Shown	Mix of Single / Clump
CO	3	Celtis occidentalis	Common Hackberry	B&B	2.5" Cal.	As Shown	
CC	6	Cercis canadensis	Eastern Redbud	B&B	1.5-2" Cal.	As Shown	
CK	5	Cornus kousa	Kousa Dogwood	B&B	1.5-2" Cal.	As Shown	Tree Form
GB	10	Ginkgo biloba 'Magyar'	Ginkgo / Maidenhair Tree	B&B	2.5" Cal.	As Shown	
GT	2	Gleditsia triacanthos f. inermis 'Skycole'	Skyline Thornless Honeylocust	B&B	2.5" Cal.	As Shown	
MP	11	Malus 'Prairifire'	Prairifire Crabapple	B&B	1.5-2" Cal.	As Shown	
PA	26	Picea abies	Norway Spruce	B&B	6 Ft	As Shown	
PG	31	Picea glauca	White Spruce	B&B	6 Ft	As Shown	
PP	17	Picea pungens 'Hoopsii'	Hoopsii Blue Spruce	B&B	5 Ft	As Shown	
PS	7	Pinus strobus	White Pine	B&B	6 Ft	As Shown	
QB	8	Quercus bicolor	Swamp White Oak	B&B	2.5" Cal.	As Shown	
QM	2	Quercus macrocarpa	Bur Oak	B&B	2.5" Cal.	As Shown	
QP	2	Quercus palustris	Pin Oak	B&B	2.5" Cal.	As Shown	
QF	5	Quercus robur 'Fastigiata'	Fastigate English Oak	B&B	2.5" Cal.	As Shown	
QR	3	Quercus rubra	Red Oak	B&B	2.5" Cal.	As Shown	
SR	12	Syringa reticulata 'Ivory Silk'	Japanese Tree Lilac	B&B	2" Cal.	As Shown	
TP	19	Thuja plicata 'Green Giant'	Green Giant Western Red Cedar	B&B	6 Ft	As Shown	
TC	4	Tilia cordata 'Greenspire'	Greenspire Littleleaf Linden	B&B	2.5" Cal.	As Shown	
ZS	5	Zelkova serrata 'Green Vase'	Green Vase Japanese Zelkova	B&B	2.5" Cal.	As Shown	

Key Revisions

- Remove planting conflicts (utilities and structures)
- Increased species diversity
- Removal of invasive species
- Increased tree spacing for tree health and longevity
- Reduce tree quantity and increased shrub plantings

2016 Approved Plan: 441 Trees, 7 Shrubs/Perennials

Proposed Plan: 265 Trees, 436 Shrubs/Perennials

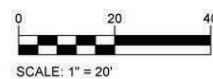


Sue Steele Landscape Architecture, PLLC



1 COMMUNITY CENTER PLANTING PLAN

L-02 1" = 20'



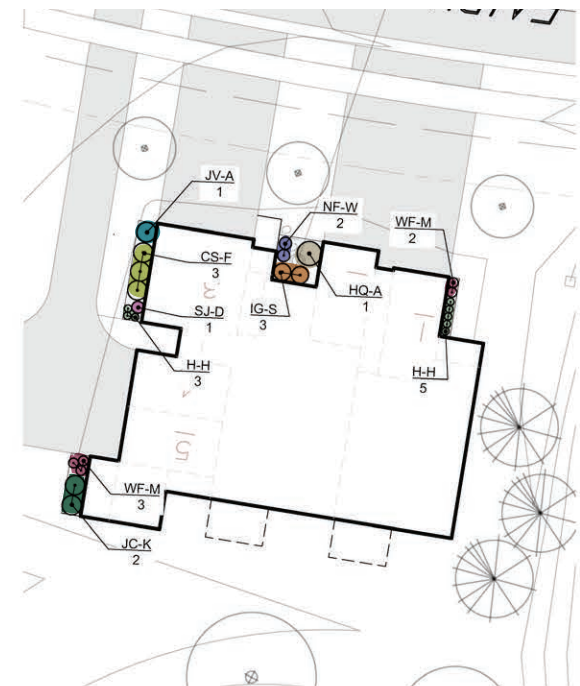
COMMUNITY CENTER PLANTING SCHEDULE

Key	QTY	Botanic Name	Common Name	Root / Cont.	Size	Spacing
COMMUNITY CENTER - PLANTING LIST						
SHRUBS						
BD-M	1	Buddleja davidii 'Miss Molly'	Miss Molly Butterfly Bush	Cont.	#3	5' O.C.
CS-F	9	Cornus sericea 'Farrow' ARCTIC FIRE	Arctic Fire Red Twig Dogwood	Cont.	#3	4' O.C.
F-C	5	Forsythia 'Courtasol' GOLD TIDE	Gold Tide Forsythia	Cont.	#3	3' O.C.
HP-L	11	Hydrangea paniculata 'Limelight'	Limelight Panicle Hydrangea	Cont.	#5	6' O.C.
IG-S	10	Ilex glabra 'Shamrock'	Shamrock Inkberry	Cont.	#3	4' O.C.
JC-S	8	Juniperus chinensis 'Sea Green'	Sea Green Juniper	Cont.	#3	4' O.C.
JV-A	2	Juniperus virginiana 'Aquatia'	Aquatia Juniper	Cont.	#5	4' O.C.
JC-K	1	Juniperus chinensis 'Kallay's Compact'	Kallay's Compact Pfitzer Juniper	Cont.	#3	5' O.C.
RA-G	15	Rhus aromatica 'Gro Low'	Gro-Low Fragrant Sumac	Cont.	#3, 18"	4' O.C.
SJ-D	6	Spiraea japonica 'Double Play Red'	Double Play Red Spirea	Cont.	#3	3' O.C.
SP-M	1	Syringa patula 'Miss Kim'	Miss Kim Lilac	Cont.	#5	6' O.C.
VP-W	8	Viburnum plicatum var. tomentosum 'Wabi-Sabi'	Wabi-Sabi Doublefile Viburnum	Cont.	#3	3' O.C.
WF-M	11	Weigela florida 'Verweig' / My Monet	My Monet Weigelia	Cont.	#3	2' O.C.
HERBACIOUS						
CA-K	15	Calamagrostis a. 'Karl Foerster'	Karl Foerster Feather Reed Grass	Cont.	#3	2.5' O.C.
E-C	6	Echinacea 'Cheyenne Spirit'	Cheyenne Spirit Coneflower	Cont.	#1	2' O.C.
H-H	47	Hemerocallis 'Happy Returns'	Happy Returns Daylily	Cont.	#1	18" O.C.
NF-W	7	Nepeta faassenii 'Walker's Low'	Walkers Low Catmint	Cont.	#1	2.5' O.C.
PA-H	39	Pennisetum alopecuroides 'Hameln'	Hameln Fountain Grass	Cont.	#3	2.5' O.C.
R-A	5	Rudbeckia 'American Gold Rush'	American Goldrush Perennial Rudbeckia	Cont.	#1	2' O.C.



2 TYPICAL PLANTING, 10-UNIT BUILDING

L-02 1" = 20'



3 TYPICAL PLANTING, 5-UNIT BUILDING

L-02 1" = 20'

APARTMENT FOUNDATION PLANTING SCHEDULE (PER BUILDING TYPE)

Key	QTY	Botanic Name	Common Name	Root / Cont.	Size	Spacing
10 UNIT BUILDING - TYP. PLANTING LIST						
SHRUBS						
CS-F	8	Cornus sericea 'Farrow' ARCTIC FIRE	Arctic Fire Red Twig Dogwood	Cont.	#3	4' O.C.
IG-S	3	Ilex glabra 'Shamrock'	Shamrock Inkberry	Cont.	#3	3.5 to 4' O.C.
JC-S	1	Juniperus chinensis 'Sea Green'	Sea Green Juniper	Cont.	#3	4' O.C.
JV-A	1	Juniperus virginiana 'Aquatia'	Aquatia Juniper	Cont.	#5	As Shown
JC-K	2	Juniperus chinensis 'Kallay's Compact'	Kallay's Compact Pfitzer Juniper	Cont.	#3	As Shown
SJ-D	5	Spiraea japonica 'Double Play Red'	Double Play Red Spirea	Cont.	#3	2.5 to 3' O.C.
SP-M	1	Syringa patula 'Miss Kim'	Miss Kim Lilac	Cont.	#5	As Shown
WF-M	9	Weigela florida 'Verweig' / My Monet	My Monet Weigelia	Cont.	#3	2' O.C.
HERBACIOUS						
CA-K	6	Calamagrostis a. 'Karl Foerster'	Karl Foerster Feather Reed Grass	Cont.	#3	2.5' O.C.
H-H	11	Hemerocallis spp. 'Happy Returns'	Happy Returns Daylily	Cont.	#1	18" O.C.
PA-H	6	Pennisetum alopecuroides 'Hameln'	Hameln Fountain Grass	Cont.	#3	2.5' O.C.
R-A	4	Rudbeckia 'American Gold Rush'	American Goldrush Perennial Rudbeckia	Cont.	#1	2' O.C.
5 UNIT BUILDING - TYP. PLANTING LIST						
SHRUBS						
CS-F	3	Cornus sericea 'Farrow' ARCTIC FIRE	Arctic Fire Red Twig Dogwood	Cont.	#3	4' O.C.
HQ-A	1	Hydrangea quercifolia 'Alice'	Alice Oakleaf Hydrangea	Cont.	#5	8' O.C.
IG-S	3	Ilex glabra 'Shamrock'	Shamrock Inkberry	Cont.	#3	4' O.C.
JV-A	1	Juniperus virginiana 'Aquatia'	Aquatia Juniper	Cont.	#5	4' O.C.
JC-K	2	Juniperus chinensis 'Kallay's Compact'	Kallay's Compact Pfitzer Juniper	Cont.	#3	5' O.C.
SJ-D	1	Spiraea japonica 'Double Play Red'	Double Play Red Spirea	Cont.	#3	3' O.C.
WF-M	5	Weigela florida 'Verweig' / My Monet	My Monet Weigelia	Cont.	#3	2' O.C.
HERBACIOUS						
H-H	8	Hemerocallis spp. 'Happy Returns'	Happy Returns Daylily	Cont.	#1	18" O.C.
NF-W	2	Nepeta faassenii 'Walker's Low'	Walkers Low Catmint	Cont.	#1	2.5' O.C.