

Sue
Steele
Landscape
Architecture
PLLC

9 Summit Street, Fairport, New York 14450
(585) 747-9906
steela.la



WARNING
IT IS VIOLATION OF THE LAW (NEW YORK STATE EDUCATION LAW TITLE 8, ARTICLE 148 AND SUBPART 79-1 OF THE REGULATIONS OF THE COMMISSIONER OF EDUCATION) FOR ANY PERSON, UNLESS ACTING UNDER THE DIRECTION OF A LICENSED LANDSCAPE ARCHITECT TO ALTER ANY ITEM ON A PLAN, SPECIFICATION, OR REPORT TO WHICH THE SEAL OF THE LANDSCAPE ARCHITECT HAS BEEN APPLIED. IF AN ITEM BEARING THE SEAL OF THE LANDSCAPE ARCHITECT IS ALTERED, THE ALTERING LANDSCAPE ARCHITECT SHALL AFFIX TO THIS ITEM THE SEAL AND THE NOTATION 'ALTERED BY' FOLLOWING BY HIS SIGNATURE AND THE DATE OF SUCH ALTERATION, AND A SPECIFIC DESCRIPTION OF THE ALTERATION.

Project Name and Address

Centerpointe
Apartments
Phase 3

Canandaigua, New York

Prepared For

Spoleta Development
7 Van Aucker Street
Rochester, New York 14608

Issue Date: 12-1-2022
PB Submittal

No. Date Revision

Drawing Title

Phase 3
Tree Planting Plan

Sheet 1 of 3

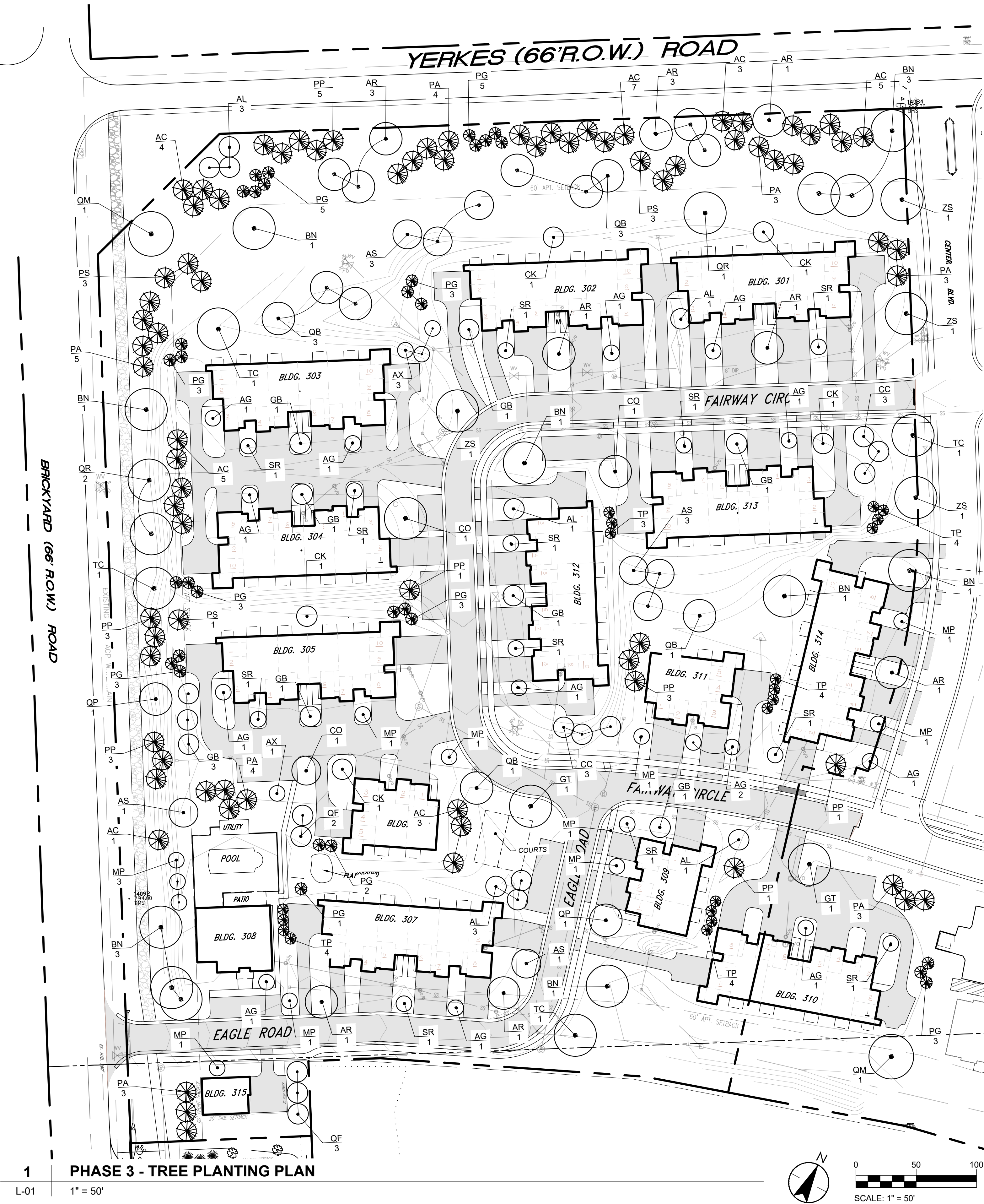
L-01

PLANTING NOTES

1. PHOSPHOROUS SHALL NOT BE USED UNLESS SOIL TESTS INDICATE A PHOSPHOROUS DEFICIENCY THAT WILL PREVENT PROPER PLANT AND LAWN ESTABLISHMENT. IF DEEMED NECESSARY, PHOSPHOROUS APPLICATION SHALL BE LIMITED TO THE MINIMUM RECOMMENDED RATES AND IN ACCORDANCE WITH ALL NYS DEC REGULATIONS.
2. CONTRACTOR SHALL VERIFY ACTUAL GRADE ELEVATIONS, SERVICE AND UTILITY LOCATIONS, AND DIMENSIONS OF PLANTINGS AND CONSTRUCTION CONTIGUOUS WITH NEW PLANTINGS BY FIELD MEASUREMENTS BEFORE PROCEEDING WITH PLANTING WORK.
3. **PLANTING SOIL MEDIUM** SHALL BE **FOUR PARTS TOPSOIL (80%)** AND **ONE PART COMPOST (20%)**. BLENDED THOROUGHLY. THE RATIO OF TOPSOIL TO COMPOST IS SUBJECT TO CHANGE BASED ON THE TESTING RESULTS FOR THE TOPSOIL.
4. **TOPSOIL:** ALL IMPORTED OR STOCKPILED EXISTING SOIL MATERIAL SHALL BE:
 - 4.1. USDA LOAM, SANDY CLAY LOAM, OR SANDY LOAM, WITH CLAY CONTENT BETWEEN 15 AND 25%, AND A COMBINED CLAY/SILT CONTENT OF NO MORE THAN 55%.
 - 4.2. pH VALUE SHALL BE BETWEEN 5.5 AND 7.0
 - 4.3. PERCENT ORGANIC MATTER OF 2.0% TO 5.0% BY DRY WEIGHT.
 - 4.4. SOLUBLE SALT LEVEL LESS THAN 2 mmho/cm.
5. **COMPOST:** ALL COMPOST USED WITHIN BED PREPARATION MUST BE:
 - 5.1. AGED AT LEAST 9 MONTHS AT TEMPERATURES SUFFICIENT TO BREAK DOWN ALL WOODY FIBRES, SEEDS, AND LEAF STRUCTURES.
 - 5.2. FREE OF TOXIC MATERIALS AT LEVELS THAT ARE HARMFUL TO PLANTS OR HUMANS.
 - 5.3. DERIVED FROM WOOD AND OTHER PLANT BASED MATERIALS, BLENDED WITH MANURE BASED MATERIALS DESIGNED TO PRODUCE COMPOST HIGH IN FUNGAL MATERIAL.
 - 5.4. HAVE A pH BETWEEN 5.5 AND 8.0.
 - 5.5. MAXIMUM SOLUBLE SALT OF 5 dS/M.
 - 5.6. MOISTURE CONTENT OF 30% TO 60%, WET WEIGHT BASIS.
 - 5.7. PARTICLE SIZE, DRY WEIGHT BASIS, WITH 98% PASSING THROUGH 3/4-INCH SIEVE.
6. **SOIL COMPACTION:** ALL PREPARED PLANTING BEDS SHALL HAVE ACCEPTABLE COMPACTION LEVELS FOR PLANT GROWTH AS MEASURED IN THE FIELD USING PENETRATION RESISTANCE METHOD.
 - 6.1.1. ACCEPTABLE COMPACTION OF FULL DEPTHS OF PLANTING AREAS SHALL BE BETWEEN 75 AND 250 PSI.
 - 6.1.2. LIMITED AREAS OF ~300 PSI COMPACTION ARE ACCEPTABLE WHERE OBSERVABLE ROOT ZONES INTERFERE WITH NEW BED PREPARATION.
 - 6.1.3. AREAS ABOVE 400 PSI ARE UNACCEPTABLE AND SHALL BE REMEDIATED TO ACCEPTABLE LEVELS.
7. CONTRACTOR SHALL LAY OUT INDIVIDUAL TREE AND SHRUB LOCATIONS AND PLANTING AREAS.
8. ALL PLANTS MUST MEET OR EXCEED THE STANDARDS OUTLINED IN THE CURRENT EDITION OF ANSI Z60.1, THE AMERICAN STANDARD FOR NURSERY STOCK.
9. ALL PLANTING BEDS SHALL RECEIVE 3" OF DOUBLE GROUND SHREDDED HARDWOOD BARK MULCH.
10. ALL PLANTS SHALL BE GUARANTEED FOR A PERIOD OF ONE YEAR FROM THE DATE OF ACCEPTANCE BY THE OWNER. IN THE EVENT OF PLANT FAILURE THE CONTRACTOR SHALL BE RESPONSIBLE FOR REPLACING PLANT MATERIAL WITHIN WARRANTY PERIOD AT NO COST TO OWNER.

PHASE 3 - TREE PLANTING SCHEDULE

Key	QTY	Botanic Name	Common Name	Root / Cont.	Size	Spacing	Notes
PHASE 3 - TREES							
AC	28	Abies concolor	White Fir	B&B	6' Ft	As Shown	
AG	14	Acer griseum	Paperbark Maple	B&B	2" Cal.	As Shown	
AR	12	Acer rubrum 'October Glory'	October Glory Red Mapple	B&B	2.5" Cal.	As Shown	
AS	8	Acer saccharum 'Green Mountain'	Green Mountain Sugar Maple	B&B	2.5" Cal.	As Shown	
AL	9	Amelanchier laevis 'Cumulus'	Cumulus Allegheny Serviceberry	B&B	1.5-2" Cal.	As Shown	Tree Form
AX	4	Amelanchier x grandiflora 'Autumn Brilliance'	Autumn Brilliance Apple Serviceberry	B&B	1.5-2" Cal.	As Shown	Tree Form
BN	12	Betula nigra 'Cully' (Heritage)	Heritage River Birch	B&B	2.5" Cal.	As Shown	Mix of Single / Clump
CO	3	Celtis occidentalis	Common Hackberry	B&B	2.5" Cal.	As Shown	
CC	6	Cercis canadensis	Eastern Redbud	B&B	1.5-2" Cal.	As Shown	
CK	5	Cornus kousa	Kousa Dogwood	B&B	1.5-2" Cal.	As Shown	Tree Form
GB	10	Ginkgo biloba 'Magyar'	Ginkgo / Maidenhair Tree	B&B	2.5" Cal.	As Shown	
GT	2	Gleditsia triacanthos f. inermis 'Skycole'	Skyline Thornless Honeylocust	B&B	2.5" Cal.	As Shown	
MP	11	Malus 'Prairifire'	Prairifire Crabapple	B&B	1.5-2" Cal.	As Shown	
PA	26	Picea abies	Norway Spruce	B&B	6 Ft	As Shown	
PG	31	Picea glauca	White Spruce	B&B	6 Ft	As Shown	
PP	17	Picea pungens 'Hoopsii'	Hoopsii Blue Spruce	B&B	5 Ft	As Shown	
PS	7	Pinus strobus	White Pine	B&B	6 Ft	As Shown	
QB	8	Quercus bicolor	Swamp White Oak	B&B	2.5" Cal.	As Shown	
QM	2	Quercus macrocarpa	Bur Oak	B&B	2.5" Cal.	As Shown	
QP	2	Quercus palustris	Pin Oak	B&B	2.5" Cal.	As Shown	
QF	5	Quercus robur 'Fastigiata'	Fastigiata English Oak	B&B	2.5" Cal.	As Shown	
QR	3	Quercus rubra	Red Oak	B&B	2.5" Cal.	As Shown	
SR	12	Syringa reticulata 'Ivory Silk'	Japanese Tree Lilac	B&B	2" Cal.	As Shown	
TP	19	Thuja plicata 'Green Giant'	Green Giant Western Red Cedar	B&B	6 Ft	As Shown	
TC	4	Tilia cordata 'Greenspire'	Greenspire Littleleaf Linden	B&B	2.5" Cal.	As Shown	
ZS	5	Zelkova serrata 'Green Vase'	Green Vase Japanese Zelkova	B&B	2.5" Cal.	As Shown	



1 PHASE 3 - TREE PLANTING PLAN

L-01 1" = 50'

Sue
Steele
Landscape
Architecture
PLLC

8 Summit Street, Fairport, New York 14450
(585) 747-9906
steelala



WARNING
IT IS VIOLATION OF THE LAW (NEW YORK STATE EDUCATION LAW TITLE 8, ARTICLE 148 AND SUBPART 79-1 OF THE REGULATIONS OF THE COMMISSIONER OF EDUCATION) FOR ANY PERSON, UNLESS ACTING UNDER THE DIRECTION OF A LICENSED LANDSCAPE ARCHITECT TO ALTER ANY ITEM ON A PLAN, SPECIFICATION, OR REPORT TO WHICH THE SEAL OF THE LANDSCAPE ARCHITECT HAS BEEN APPLIED. IF AN ITEM BEARING THE SEAL OF THE LANDSCAPE ARCHITECT IS ALTERED, THE ALTERING LANDSCAPE ARCHITECT SHALL AFFIX TO THIS ITEM THE SEAL AND THE NOTATION 'ALTERED BY' FOLLOWING BY HIS SIGNATURE AND THE DATE OF SUCH ALTERATION, AND A SPECIFIC DESCRIPTION OF THE ALTERATION.

Project Name and Address

Centerpointe
Apartments
Phase 3

Canandaigua, New York

Prepared For

Spoleta Development
7 Van Acker Street
Rochester, New York 14608

Issue Date: 12-1-2022
PB Submittal

No. Date Revision

Drawing Title

Phase 3
Unit / Building
Planting Plans

Sheet 2 of 3

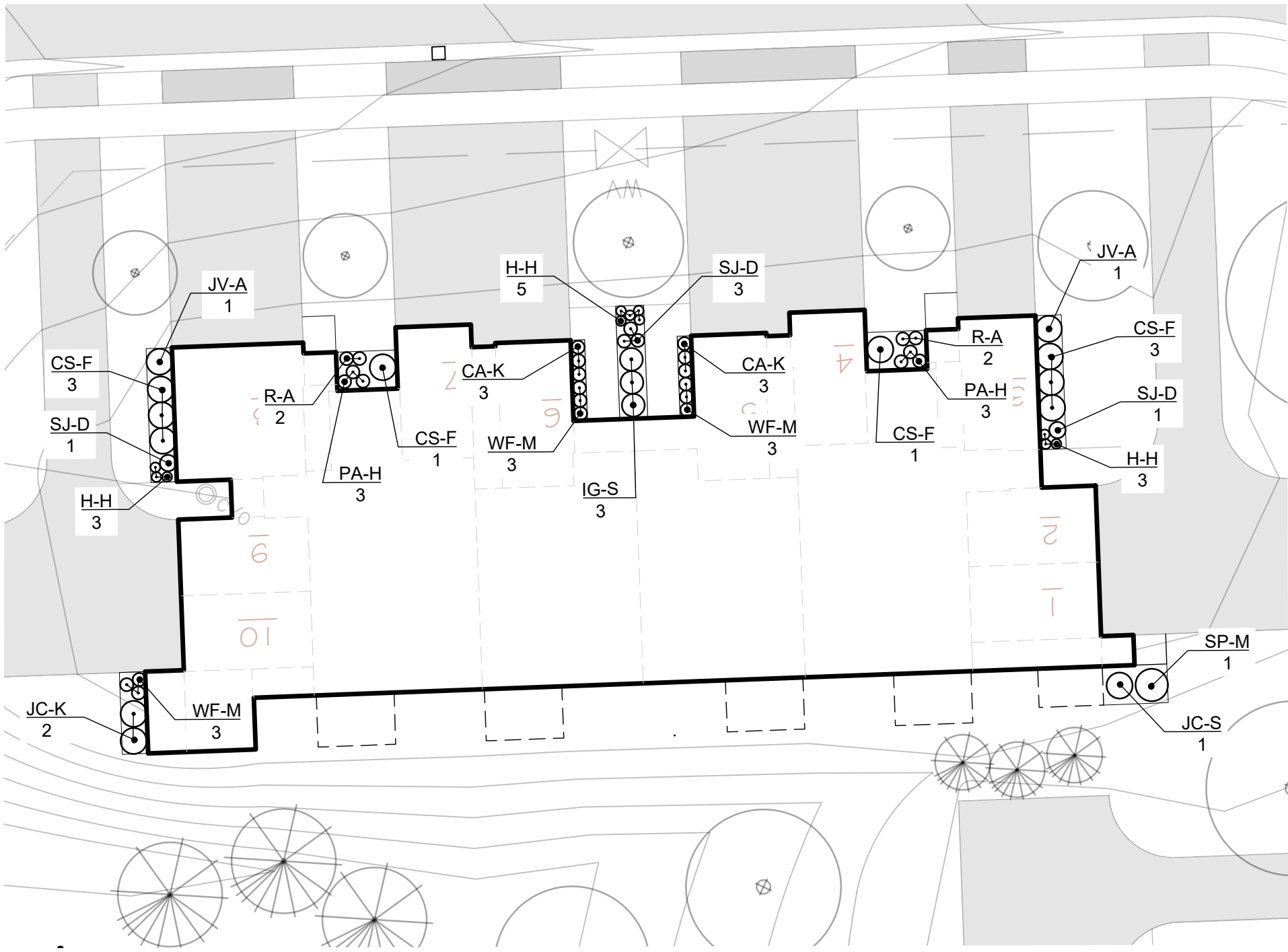
L-02



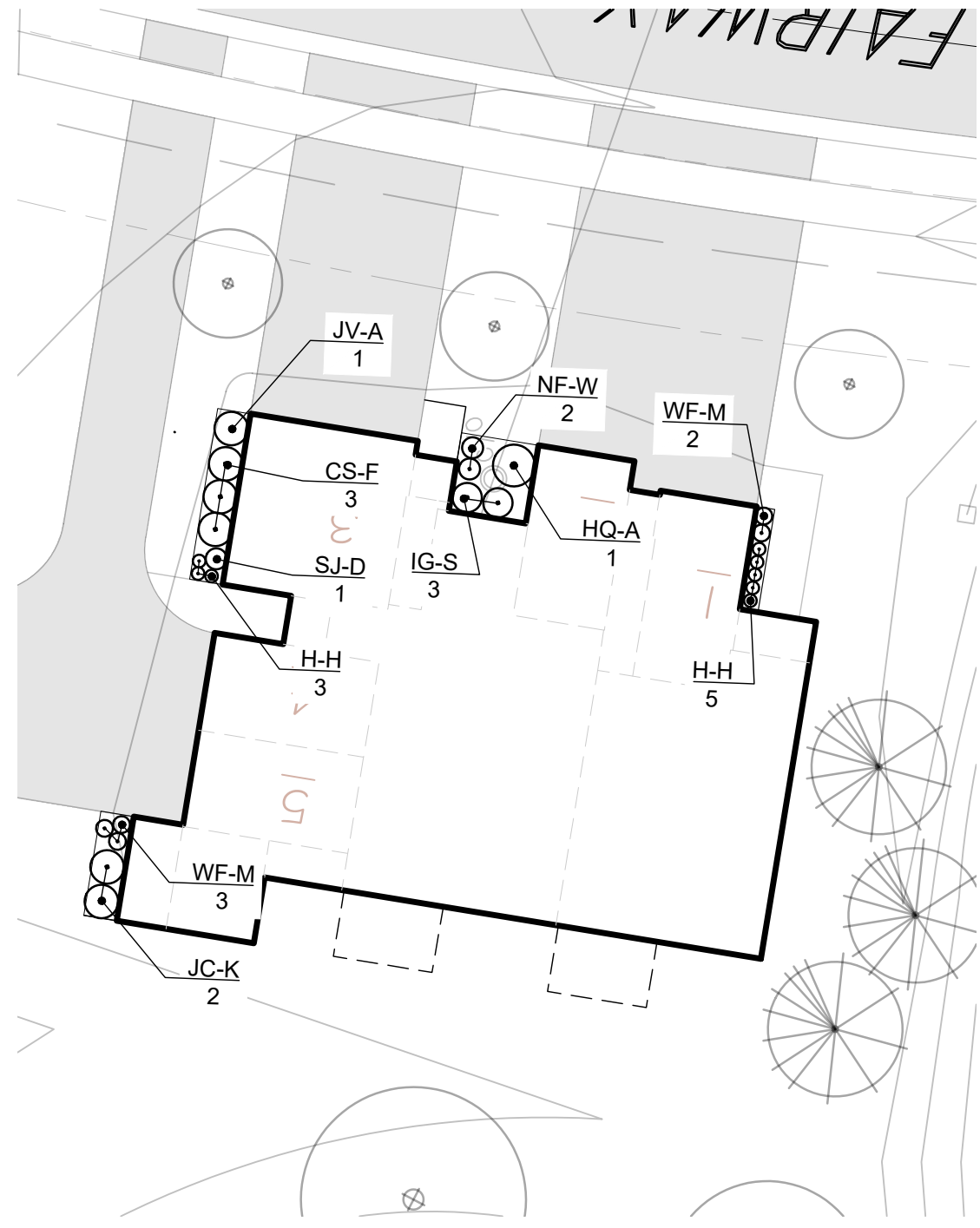
1 | COMMUNITY CENTER PLANTING PLAN
L-02 | 1" = 20'

COMMUNITY CENTER PLANTING SCHEDULE

Key	QTY	Botanic Name	Common Name	Root / Cont.	Size	Spacing
COMMUNITY CENTER - PLANTING LIST						
SHRUBS						
BD-M	1	Buddleja davidii 'Miss Molly'	Miss Molly Butterfly Bush	Cont.	#3	5' O.C.
CS-F	9	Cornus sericea 'Farrow' ARCTIC FIRE	Arctic Fire Red Twig Dogwood	Cont.	#3	4' O.C.
F-C	5	Forsythia 'Courtasol' GOLD TIDE	Gold Tide Forsythia	Cont.	#3	3' O.C.
HP-L	11	Hydrangea paniculata 'Limelight'	Limelight Panicle Hydrangea	Cont.	#5	6' O.C.
IG-S	10	Ilex glabra 'Shamrock'	Shamrock Inkberry	Cont.	#3	4' O.C.
JC-S	8	Juniperus chinensis 'Sea Green'	Sea Green Juniper	Cont.	#3	4' O.C.
JV-A	2	Juniperus virginiana 'Aquaivta'	Aquaivta Juniper	Cont.	#5	4' O.C.
JC-K	1	Juniperus chinensis 'Kallay's Compact'	Kallay's Compact Pfitzer Juniper	Cont.	#3	5' O.C.
RA-G	15	Rhus aromatica 'Gro Low'	Gro-Low Fragrant Sumac	Cont.	#3, 18"	4' O.C.
SJ-D	6	Spirea japonica 'Double Play Red'	Double Play Red Spirea	Cont.	#3	3' O.C.
SP-M	1	Syringa patula 'Miss Kim'	Miss Kim Lilac	Cont.	#5	6' O.C.
VP-W	8	Viburnum plicatum var. tomentosum 'Wabi-Sabi'	Wabi-Sabi Doublefile Viburnum	Cont.	#3	3' O.C.
WF-M	11	Weigela florida 'Verweig' / My Monet	My Monet Weigelia	Cont.	#3	2' O.C.
HERBACIOUS						
CA-K	15	Calamagrostis a. 'Karl Foerster'	Karl Foerster Feather Reed Grass	Cont.	#3	2.5' O.C.
E-C	6	Echinacea 'Cheyenne Spirit'	Cheyenne Spirit Coneflower	Cont.	#1	2 O.C.
H-H	47	Heemerocallis 'Happy Returns'	Happy Returns Daylily	Cont.	#1	18" O.C.
NF-W	7	Nepeta faassenii 'Walkers Low'	Walkers Low Catmint	Cont.	#1	2.5' O.C.
PA-H	39	Pennisetum alopecuroides 'Hameln'	Hameln Fountain Grass	Cont.	#3	2.5' O.C.
R-A	5	Rudbeckia 'American Gold Rush'	American Goldrush Perennial Rudbeckia	Cont.	#1	2' O.C.



2 | TYPICAL PLANTING, 10-UNIT BUILDING
L-02 | 1" = 20'



3 | TYPICAL PLANTING, 5-UNIT BUILDING
L-02 | 1" = 20'

APARTMENT FOUNDATION PLANTING SCHEDULE (PER BUILDING TYPE)

Key	QTY	Botanic Name	Common Name	Root / Cont.	Size	Spacing
10 UNIT BUILDING - TYP. PLANTING LIST						
SHRUBS						
CS-F	8	Cornus sericea 'Farrow' ARCTIC FIRE	Arctic Fire Red Twig Dogwood	Cont.	#3	4' O.C.
IG-S	3	Ilex glabra 'Shamrock'	Shamrock Inkberry	Cont.	#3	3.5 to 4' O.C.
JC-S	1	Juniperus chinensis 'Sea Green'	Sea Green Juniper	Cont.	#3	4' O.C.
JV-A	1	Juniperus virginiana 'Aquaivta'	Aquaivta Juniper	Cont.	#5	As Shown
JC-K	2	Juniperus chinensis 'Kallay's Compact'	Kallay's Compact Pfitzer Juniper	Cont.	#3	As Shown
SJ-D	5	Spirea japonica 'Double Play Red'	Double Play Red Spirea	Cont.	#3	2.5 to 3' O.C.
SP-M	1	Syringa patula 'Miss Kim'	Miss Kim Lilac	Cont.	#5	As Shown
WF-M	9	Weigela florida 'Verweig' / My Monet	My Monet Weigelia	Cont.	#3	2' O.C.
HERBACIOUS						
CA-K	6	Calamagrostis a. 'Karl Foerster'	Karl Foerster Feather Reed Grass	Cont.	#3	2.5' O.C.
H-H	11	Heemerocallis spp. 'Happy Returns'	Happy Returns Daylily	Cont.	#1	18" O.C.
PA-H	6	Pennisetum alopecuroides 'Hameln'	Hameln Fountain Grass	Cont.	#3	2.5' O.C.
R-A	4	Rudbeckia 'American Gold Rush'	American Goldrush Perennial Rudbeckia	Cont.	#1	2' O.C.
5 UNIT BUILDING - TYP. PLANTING LIST						
SHRUBS						
CS-F	3	Cornus sericea 'Farrow' ARCTIC FIRE	Arctic Fire Red Twig Dogwood	Cont.	#3	4' O.C.
HQ-A	1	Hydrangea quercifolia 'Alice'	Alice Oakleaf Hydrangea	Cont.	#5	8' O.C.
IG-S	3	Ilex glabra 'Shamrock'	Shamrock Inkberry	Cont.	#3	4' O.C.
JV-A	1	Juniperus virginiana 'Aquaivta'	Aquaivta Juniper	Cont.	#5	4' O.C.
JC-K	2	Juniperus chinensis 'Kallay's Compact'	Kallay's Compact Pfitzer Juniper	Cont.	#3	5' O.C.
SJ-D	1	Spirea japonica 'Double Play Red'	Double Play Red Spirea	Cont.	#3	3' O.C.
WF-M	5	Weigela florida 'Verweig' / My Monet	My Monet Weigelia	Cont.	#3	2' O.C.
HERBACIOUS						
H-H	8	Heemerocallis spp. 'Happy Returns'	Happy Returns Daylily	Cont.	#1	18" O.C.
NF-W	2	Nepeta faassenii 'Walkers Low'	Walkers Low Catmint	Cont.	#1	2.5' O.C.

Sue
Steele
Landscape
Architecture
PLLC

9 Summit Street, Fairport, New York 14450

(585) 747-9906

steele.la



WARNING
IT IS VIOLATION OF THE LAW (NEW YORK STATE EDUCATION LAW TITLE 8, ARTICLE 148 AND SUBPART 79-1 OF THE REGULATIONS OF THE COMMISSIONER OF EDUCATION) FOR ANY PERSON, UNLESS ACTING UNDER THE DIRECTION OF A LICENSED LANDSCAPE ARCHITECT TO ALTER ANY ITEM ON A PLAN, SPECIFICATION, OR REPORT TO WHICH THE SEAL OF THE LANDSCAPE ARCHITECT HAS BEEN APPLIED. IF AN ITEM BEARING THE SEAL OF THE LANDSCAPE ARCHITECT IS ALTERED, THE ALTERING LANDSCAPE ARCHITECT SHALL AFFIX TO THIS ITEM THE SEAL AND THE NOTATION 'ALTERED BY' FOLLOWING BY HIS SIGNATURE AND THE DATE OF SUCH ALTERATION, AND A SPECIFIC DESCRIPTION OF THE ALTERATION.

Project Name and Address

Centerpointe
Apartments
Phase 3

Canandaigua, New York

Prepared For

Spoleta Development
7 Van Acker Street
Rochester, New York 14608

Issue Date: 12-1-2022
PB Submittal

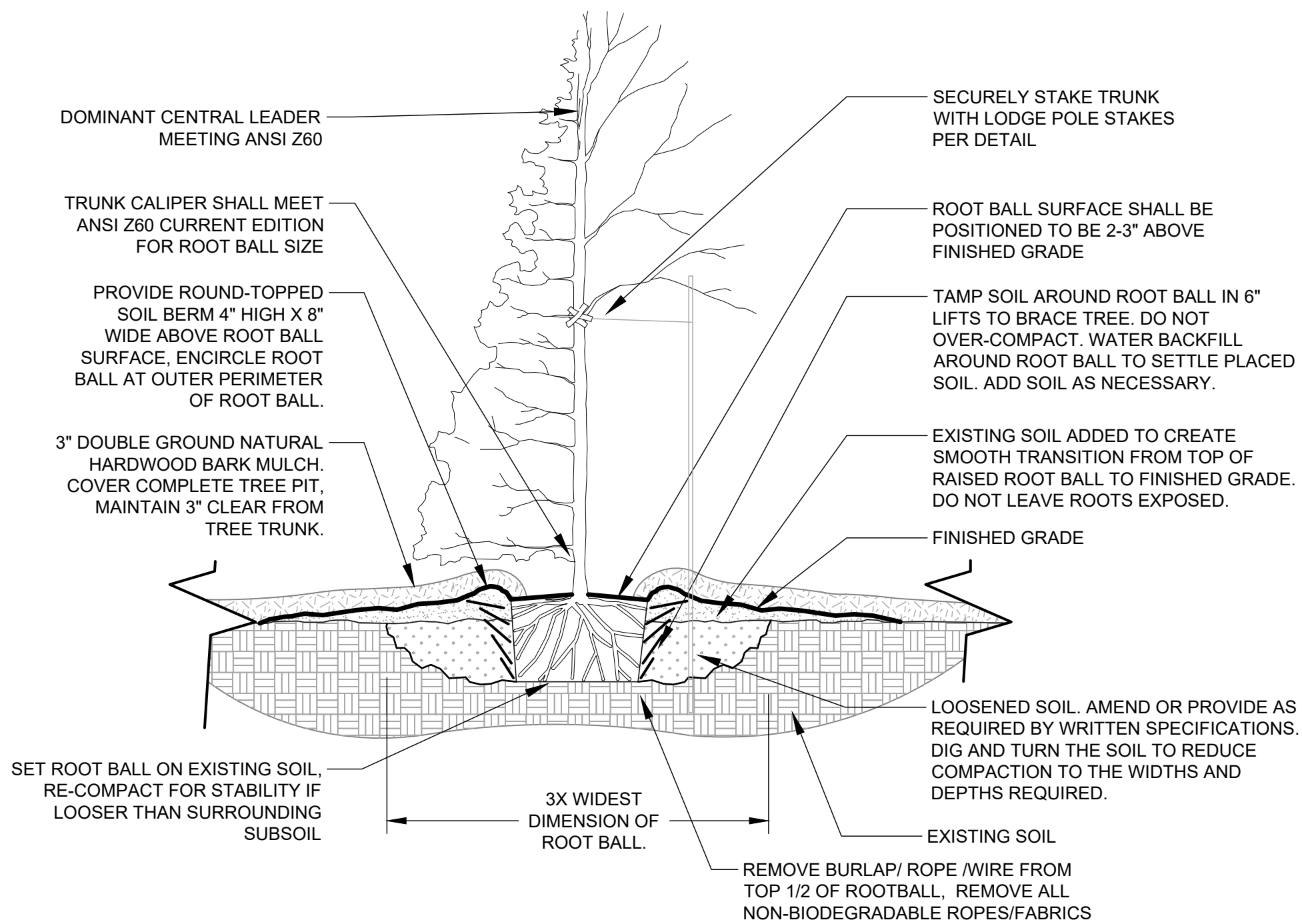
No.	Date	Revision
-----	------	----------

Drawing Title

Phase 3
Planting Details

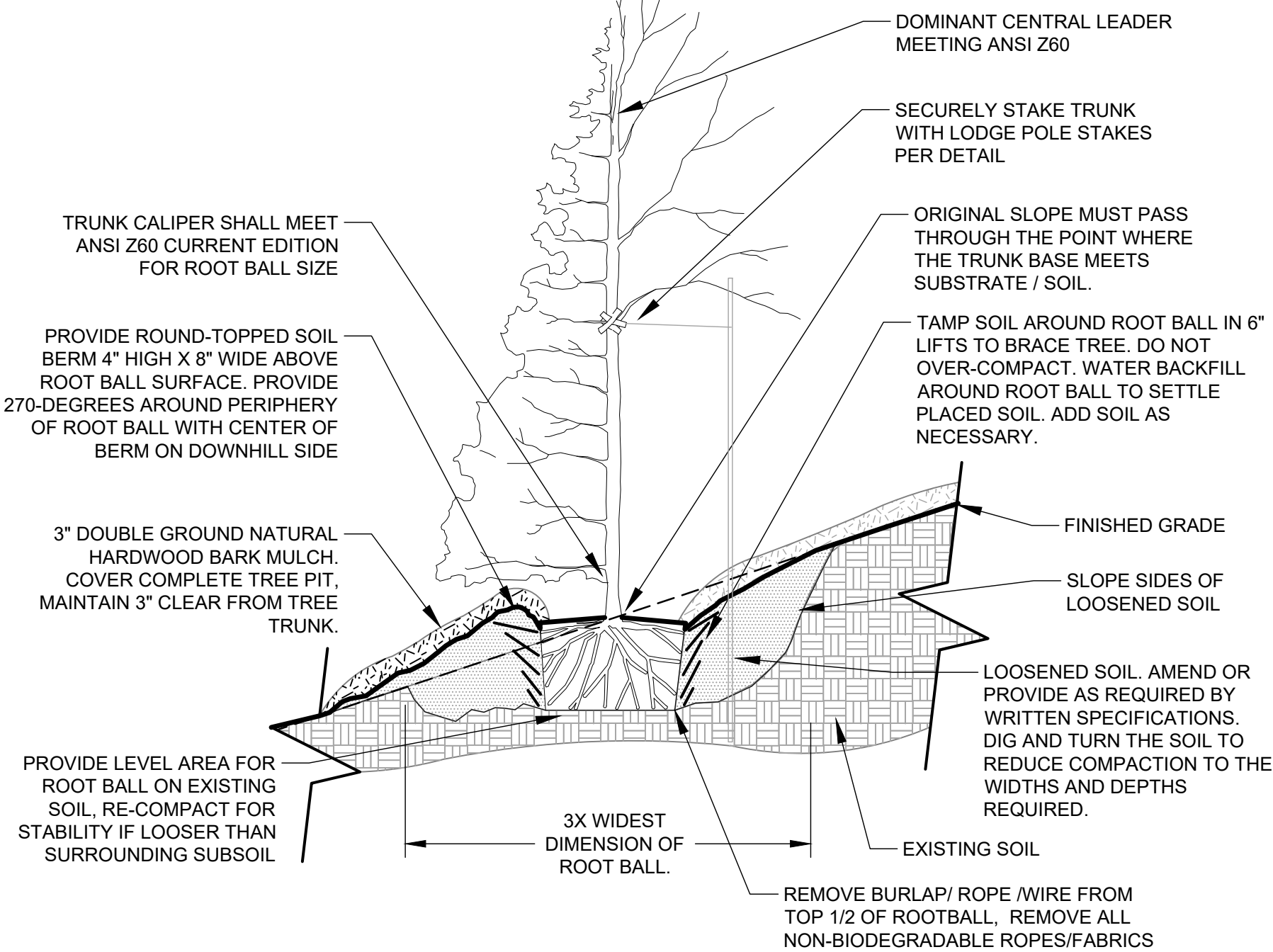
Sheet 3 of 3

L-03



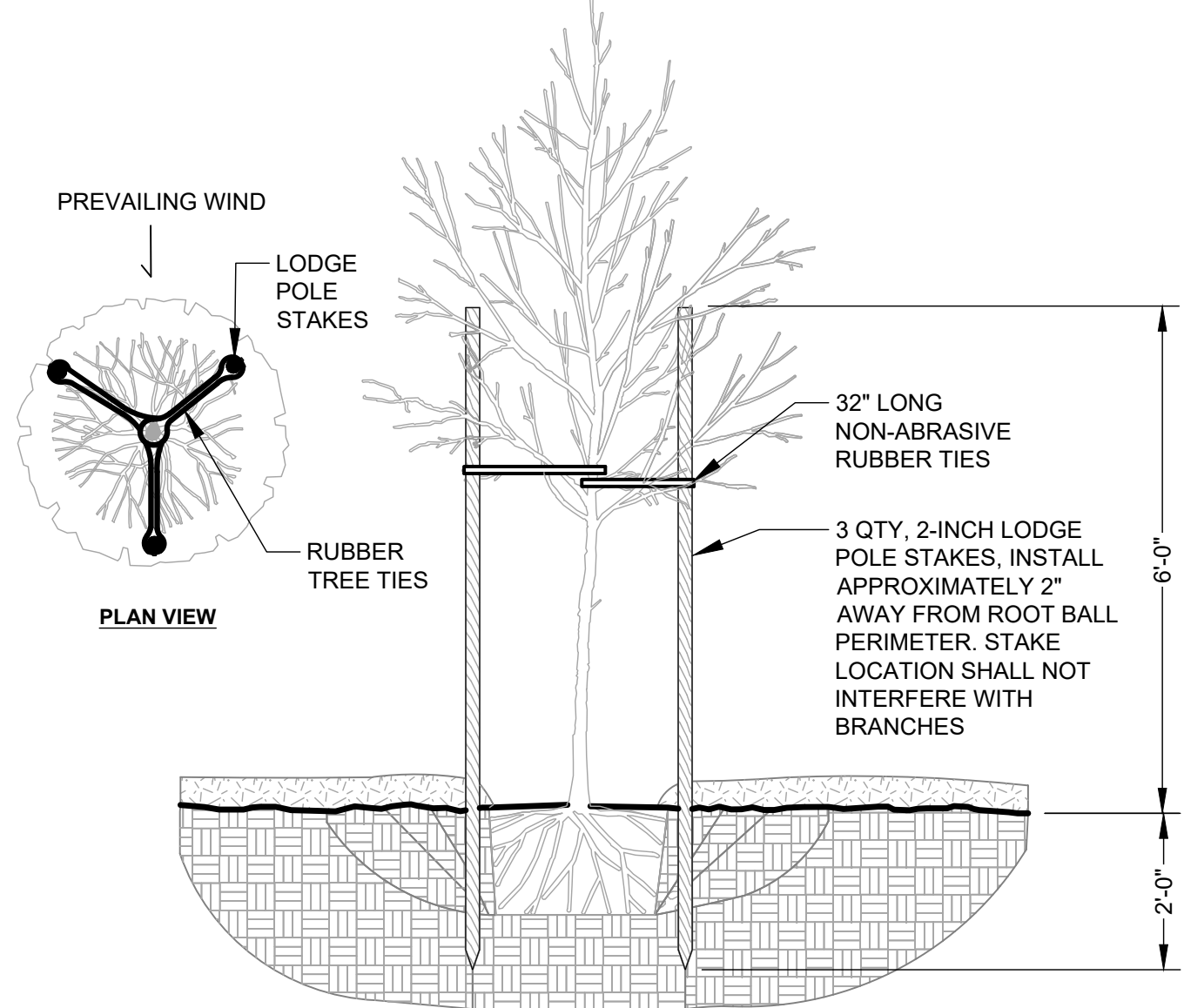
1 TREE PLANTING DETAIL

L-03 N.T.S.



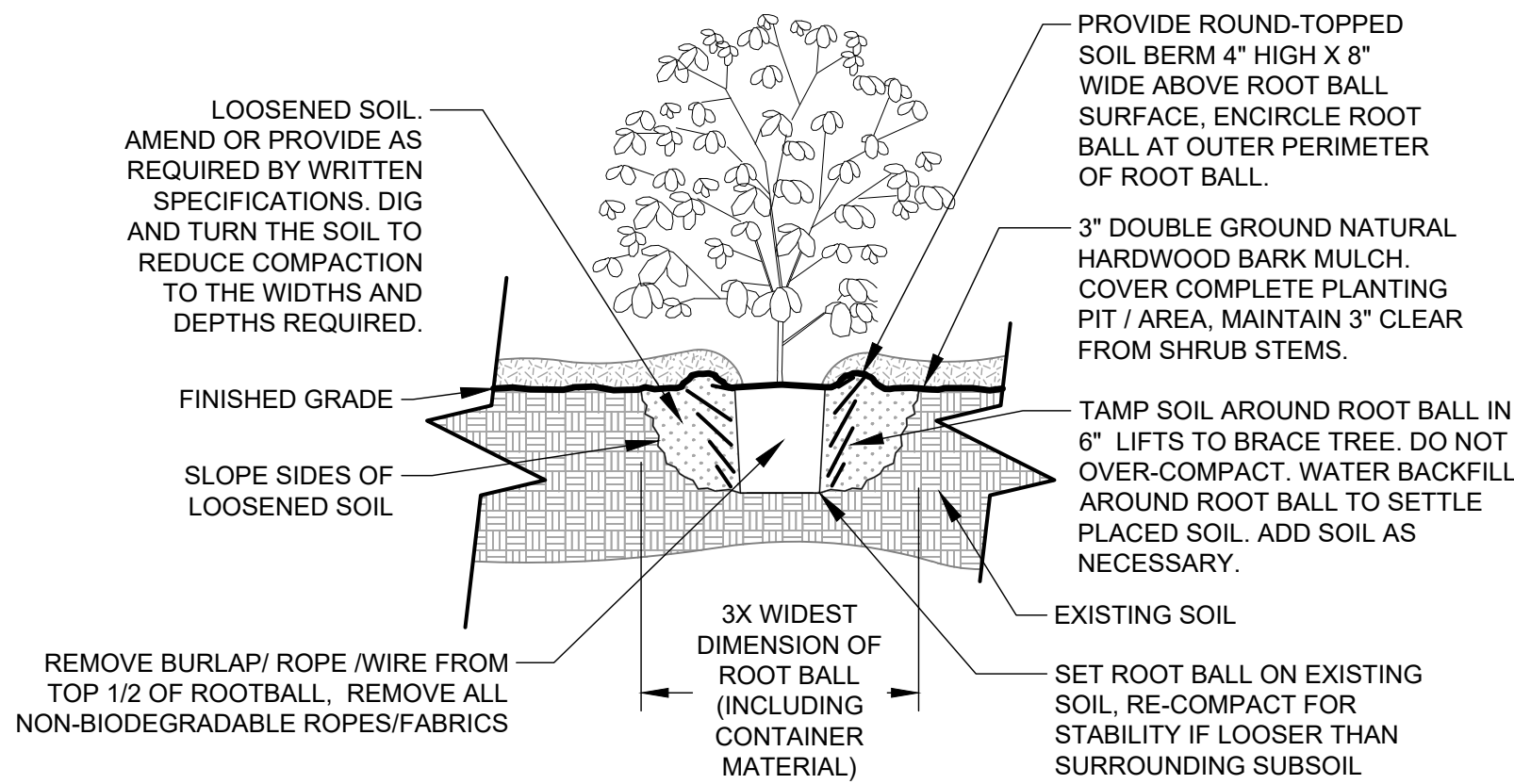
2 TREE PLANTING DETAIL - SLOPES 1:20 (5%) TO 1:2 (50%)

L-03 N.T.S.



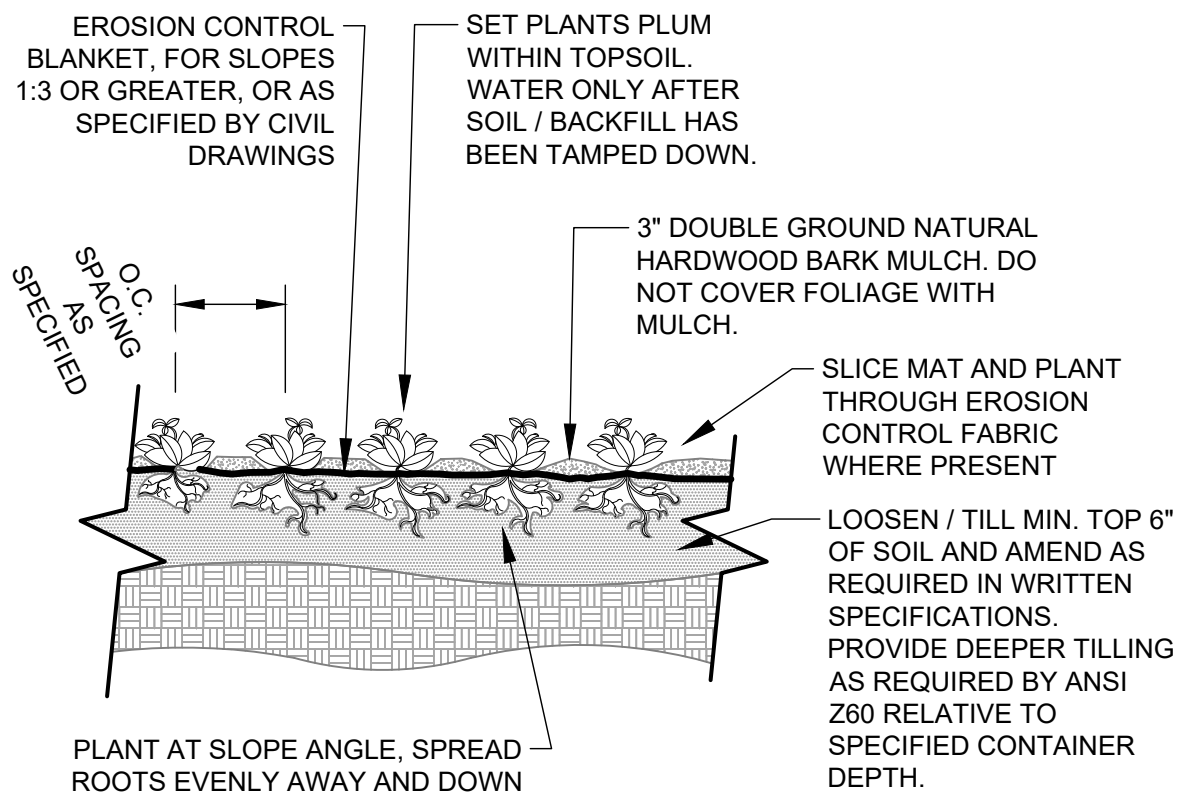
3 TREE STAKING DETAIL

L-03 N.T.S.



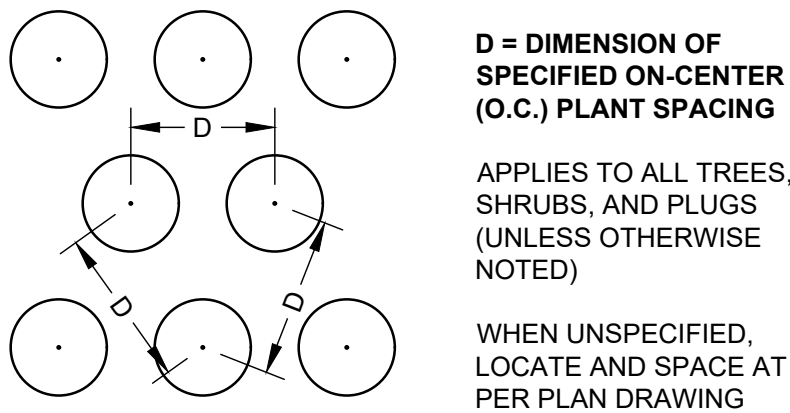
4 SHRUB PLATING DETAIL

L-03 N.T.S.



5 PERENNIAL / CONTAINER PLANTING DETAIL

L-03 N.T.S.



6 PLANT SPACING DETAIL

L-03 N.T.S.