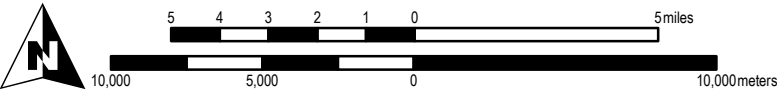


MAP PROJECTION
UTM Zone 18, NAD83 meters



KEY

- Ag. District 1
- Ag. District 6
- Ag. District 8
- Ag. District 9

MAP SOURCE
INFORMATION

Map created at Cornell IRIS (Institute
for Resource Information Sciences)
<<http://iris.css.cornell.edu>> for the NYS
Department of Agriculture and Markets

Agricultural Districts boundary data is
available at CUGIR (Cornell University
Geospatial Information Repository)
website:
<<http://cugir.mannlib.cornell.edu>>

DISTRICT
CERTIFICATIONS
and TOWNS

DISTRICT 1

- CERTIFIED 2/27/2014
- | | |
|-----------------|-----------------|
| Bristol | Manchester |
| Canadice | Richmond |
| Canandaigua | Victor |
| East Bloomfield | West Bloomfield |
| Farmington | |
| Hopewell | |

DISTRICT 6

- CERTIFIED 12/11/2009
- | | |
|----------|------------|
| Geneva | Manchester |
| Gorham | Phelps |
| Hopewell | Seneca |

DISTRICT 8

- CERTIFIED 4/19/2016
- | |
|------------|
| Manchester |
| Phelps |

DISTRICT 9

- CERTIFIED 2/12/2010
- | |
|---------------|
| Bristol |
| Candice |
| Canandaigua |
| Naples |
| Richmond |
| South Bristol |

DISCLAIMER
This is a general reference to Agricultural
District boundaries; not a legal substitute
for actual tax parcel information.

Boundaries as certified prior to March 2017

Open Enrollment Annual Additions are not
included in this data. Check with county
agencies to confirm the status of individual
parcels.