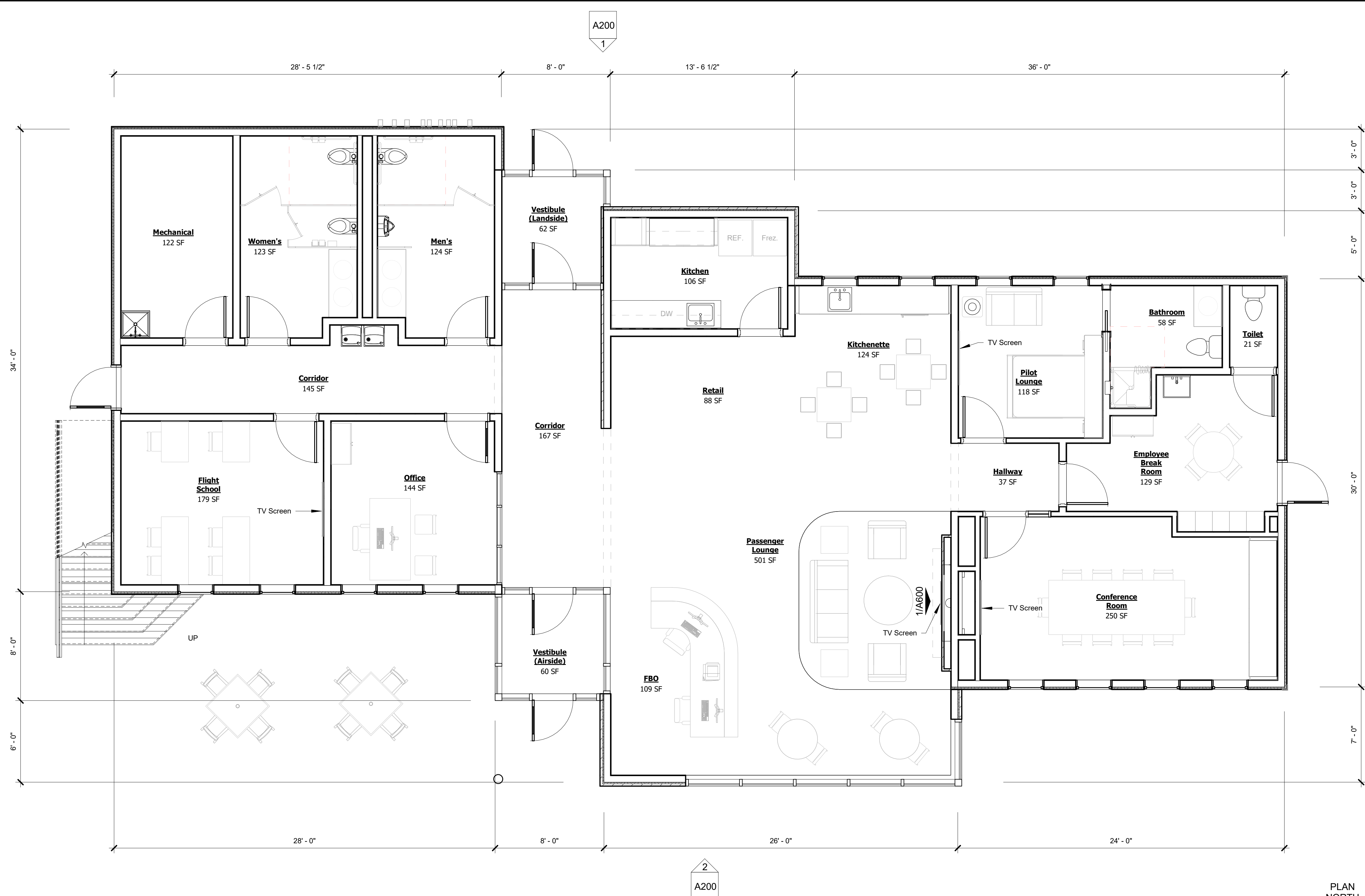


A201 1



1 First Level Floor Plan
1/4" = 1'-0"

IT IS A VIOLATION OF LAW FOR ANY PERSON, UNLESS THEY ARE ACTING UNDER THE DIRECT DIRECTION OF A LICENSED PROFESSIONAL ENGINEER, ARCHITECT, LANDSCAPE ARCHITECT, OR LAND SURVEYOR, TO ALTER AN ITEM IN ANY WAY. IF AN ITEM BEARING THE STAMP OF A LICENSED PROFESSIONAL IS ALTERED, THE ALTERING ENGINEER, ARCHITECT, LANDSCAPE ARCHITECT, OR LAND SURVEYOR SHALL STAMP THE DOCUMENT AND INCLUDE THE NOTATION "ALTERED BY" FOLLOWED BY THEIR SIGNATURE, THE DATE OF SUCH ALTERATION, AND A SPECIFIC DESCRIPTION OF THE ALTERATION.

SEAL

**PRELIMINARY
PLANS**



15 FISHERS ROAD: SUITE 200
PITTSFORD, NEW YORK, 14534
P: 607.723.9421 F: 607.723.4979

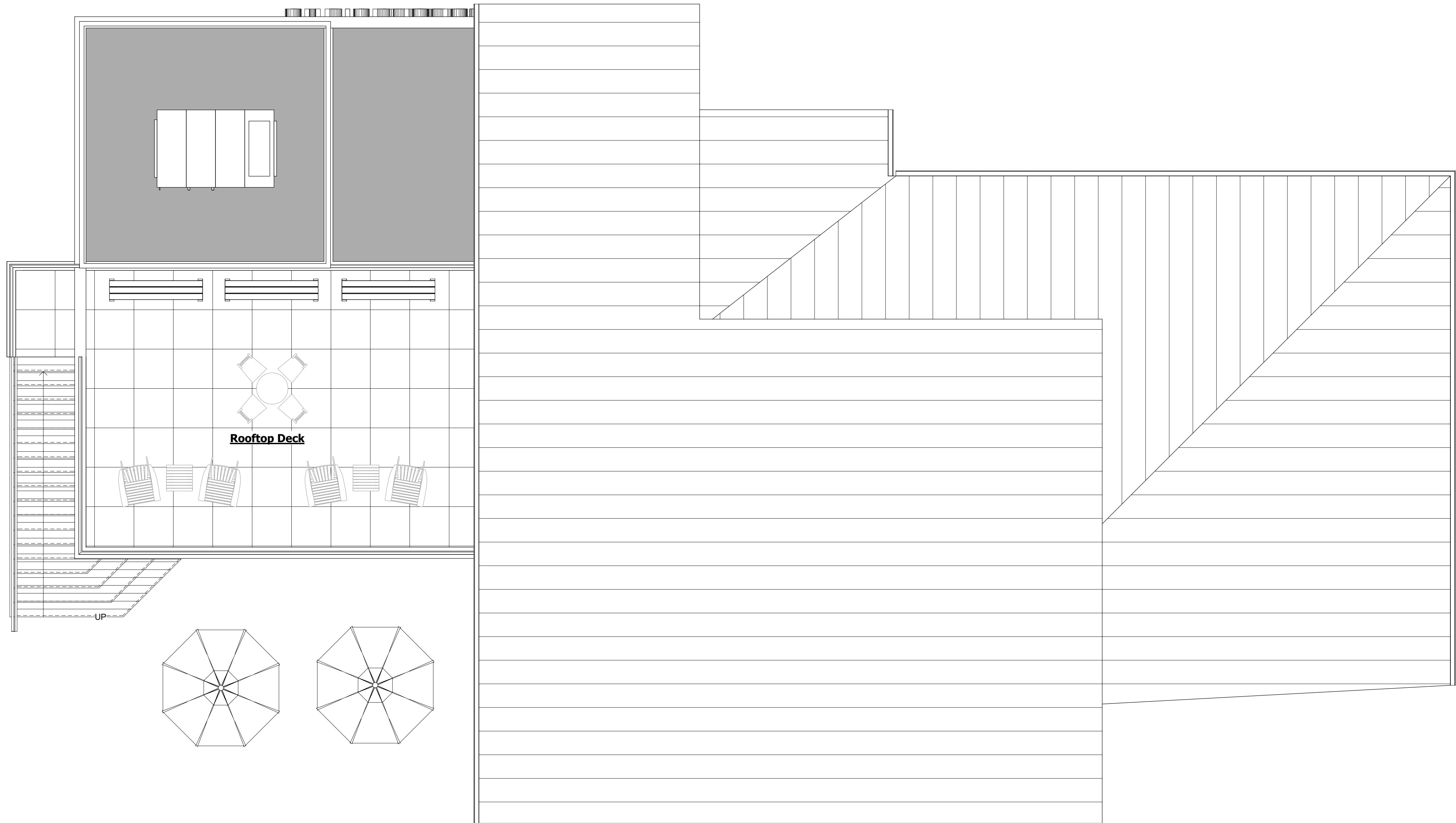
REV	DATE	DESCRIPTION	BY

CANANDAIGUA AIRPORT
TOWN OF CANANDAIGUA, STATE OF NEW YORK
GA TERMINAL BUILDING

First Floor Plan

SCALE: 1/4" = 1'-0"
DESIGN: L2studio
DRAWN: MAL
PROJECT: 19.011
CHECKED: MAL
DATE: 10/02/2020

A100
2 OF XX



1 Roof Plan
1/4" = 1'-0"

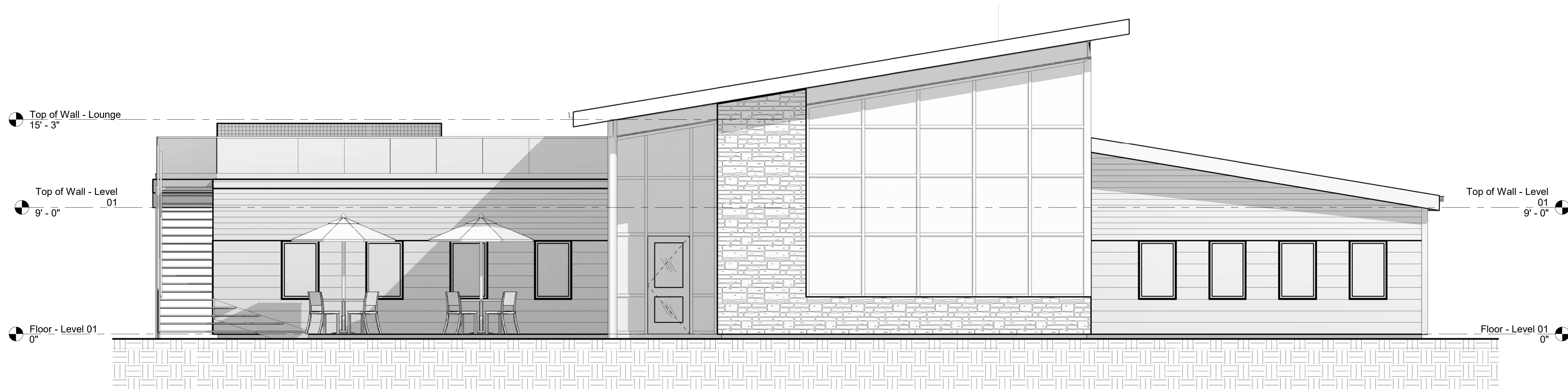


IT IS A VIOLATION OF LAW FOR ANY PERSON, UNLESS THEY ARE ACTING UNDER THE DIRECT DIRECTION OF A LICENSED PROFESSIONAL ENGINEER, ARCHITECT, LANDSCAPE ARCHITECT, OR LAND SURVEYOR, TO ALTER AN ITEM IN ANY WAY. IF AN ITEM BEARING THE STAMP OF A LICENSED PROFESSIONAL IS ALTERED, THE ALTERING ENGINEER, ARCHITECT, LANDSCAPE ARCHITECT, OR LAND SURVEYOR SHALL STAMP THE DOCUMENT AND INCLUDE THE NOTATION "ALTERED BY" FOLLOWED BY THEIR SIGNATURE, THE DATE OF SUCH ALTERATION, AND A SPECIFIC DESCRIPTION OF THE ALTERATION.

SEAL	 LOMBARDINI+LAYTON architecture 45 LEWIS STREET BINGHAMTON, NY 13901 (p) 607.217.7013	REV	DATE	DESCRIPTION	BY	CANANDAIGUA AIRPORT TOWN OF CANANDAIGUA, STATE OF NEW YORK GA TERMINAL BUILDING		
		 McFarland Johnson 15 FISHERS ROAD, SUITE 200 PITTSFORD, NEW YORK, 14534 P: 607.723.9421 F: 607.723.4979		Roof Plan			SCALE: 1/4" = 1'-0"	DESIGN: Designer
DRAWN: Author			PROJECT: 19.011					
CHECKED: Checker			DATE: 10/02/2020					



1 Building Elevation - South
1/4" = 1'-0"



2 Building Elevation - North
1/4" = 1'-0"


IT IS A VIOLATION OF LAW FOR ANY PERSON, UNLESS THEY ARE ACTING UNDER THE DIRECT DIRECTION OF A LICENSED PROFESSIONAL ENGINEER, ARCHITECT, LANDSCAPE ARCHITECT, OR LAND SURVEYOR, TO ALTER AN ITEM IN ANY WAY. IF AN ITEM BEARING THE STAMP OF A LICENSED PROFESSIONAL IS ALTERED, THE ALTERING ENGINEER, ARCHITECT, LANDSCAPE ARCHITECT, OR LAND SURVEYOR SHALL STAMP THE DOCUMENT AND INCLUDE THE NOTATION "ALTERED BY" FOLLOWED BY THEIR SIGNATURE, THE DATE OF SUCH ALTERATION, AND A SPECIFIC DESCRIPTION OF THE ALTERATION.

SEAL

**PRELIMINARY
PLANS**



REV	DATE	DESCRIPTION	BY

**McFarland Johnson**

15 FISHERS ROAD, SUITE 200
PITTSFORD, NEW YORK, 14534
P: 607.723.9421 F: 607.723.4979

CANANDAIGUA AIRPORT
TOWN OF CANANDAIGUA, STATE OF NEW YORK
GA TERMINAL BUILDING

Exterior Elevations

SCALE: 1/4" = 1'-0"	DESIGN: Designer	A200 OF XX
DRAWN: Author	PROJECT: 19.011	
CHECKED: Checker	DATE: 10/02/2020	



1 Building Elevation - East
1/4" = 1'-0"



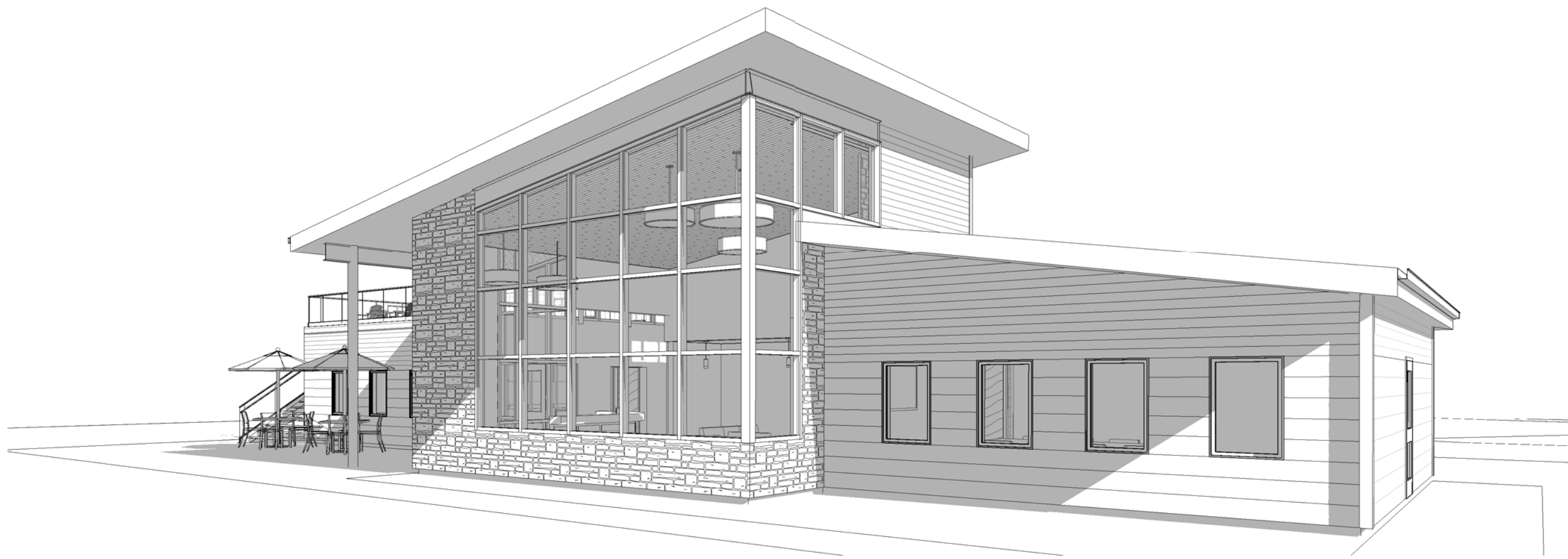
2 Building Elevation - West
1/4" = 1'-0"

IT IS A VIOLATION OF LAW FOR ANY PERSON, UNLESS THEY ARE ACTING UNDER THE DIRECT DIRECTION OF A LICENSED PROFESSIONAL ENGINEER, ARCHITECT, LANDSCAPE ARCHITECT, OR LAND SURVEYOR, TO ALTER AN ITEM IN ANY WAY. IF AN ITEM BEARING THE STAMP OF A LICENSED PROFESSIONAL IS ALTERED, THE ALTERING ENGINEER, ARCHITECT, LANDSCAPE ARCHITECT, OR LAND SURVEYOR SHALL STAMP THE DOCUMENT AND INCLUDE THE NOTATION "ALTERED BY" FOLLOWED BY THEIR SIGNATURE, THE DATE OF SUCH ALTERATION, AND A SPECIFIC DESCRIPTION OF THE ALTERATION.

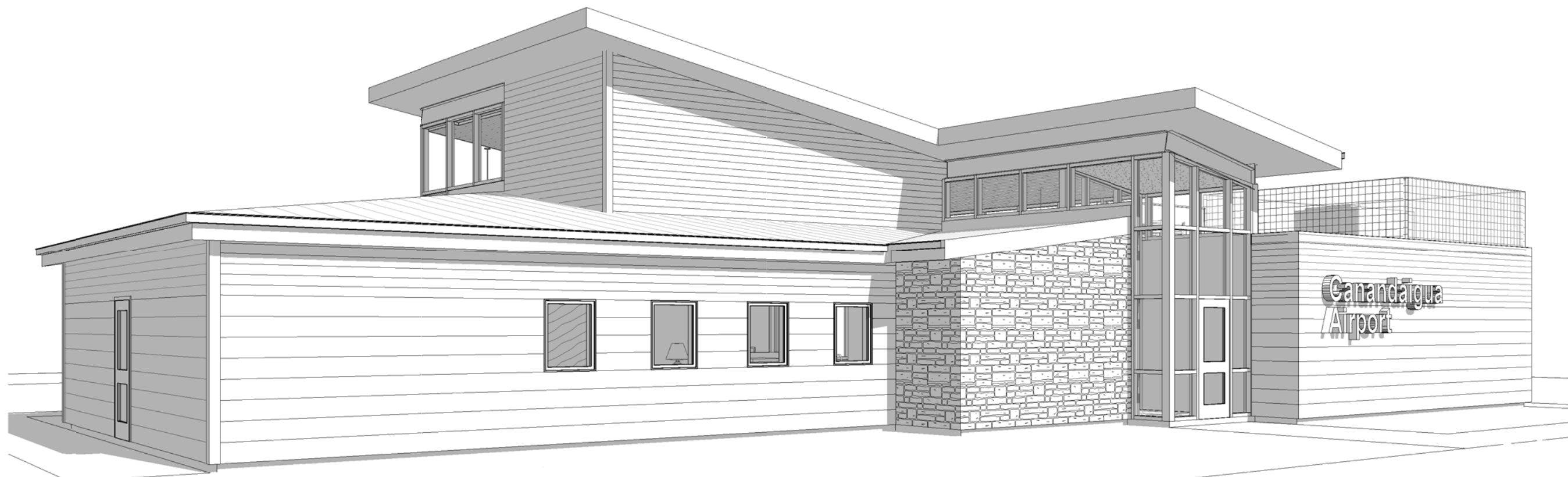
SEAL	<div><div>STUDIO</div><div>LOMBARDINI+LAYTON</div><div>architecture</div><div>45 LEWIS STREET</div><div>BINGHAMTON, NY 13901</div><div>(p) 607.217.7013</div></div>	REV	DATE	DESCRIPTION	BY	CANANDAIGUA AIRPORT				
						TOWN OF CANANDAIGUA, STATE OF NEW YORK				
						GA TERMINAL BUILDING				
						Exterior Elevations				
		<div><div>McFarland Johnson</div><div>15 FISHERS ROAD; SUITE 200</div><div>PITTSFORD, NEW YORK, 14534</div><div>P: 607.723.9421 F: 607.723.4979</div></div>				SCALE:	1/4" = 1'-0"	DESIGN:	Designer	A201
						DRAWN:	Author	PROJECT:	19.011	
PRELIMINARY PLANS				CHECKED:	Checker	DATE:	10/02/2020	OF XX		



1 3D View - Airside Left



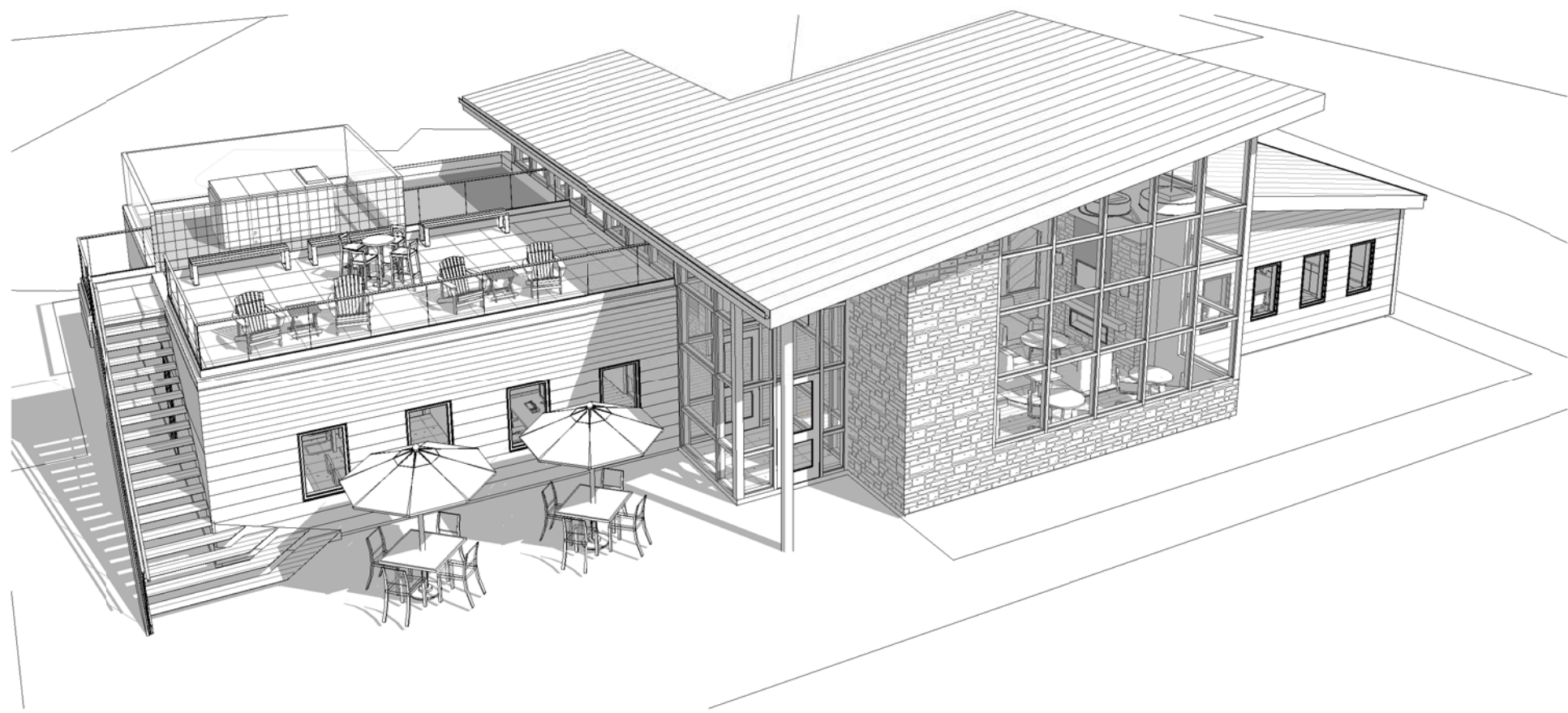
2 3D View - Airside Right



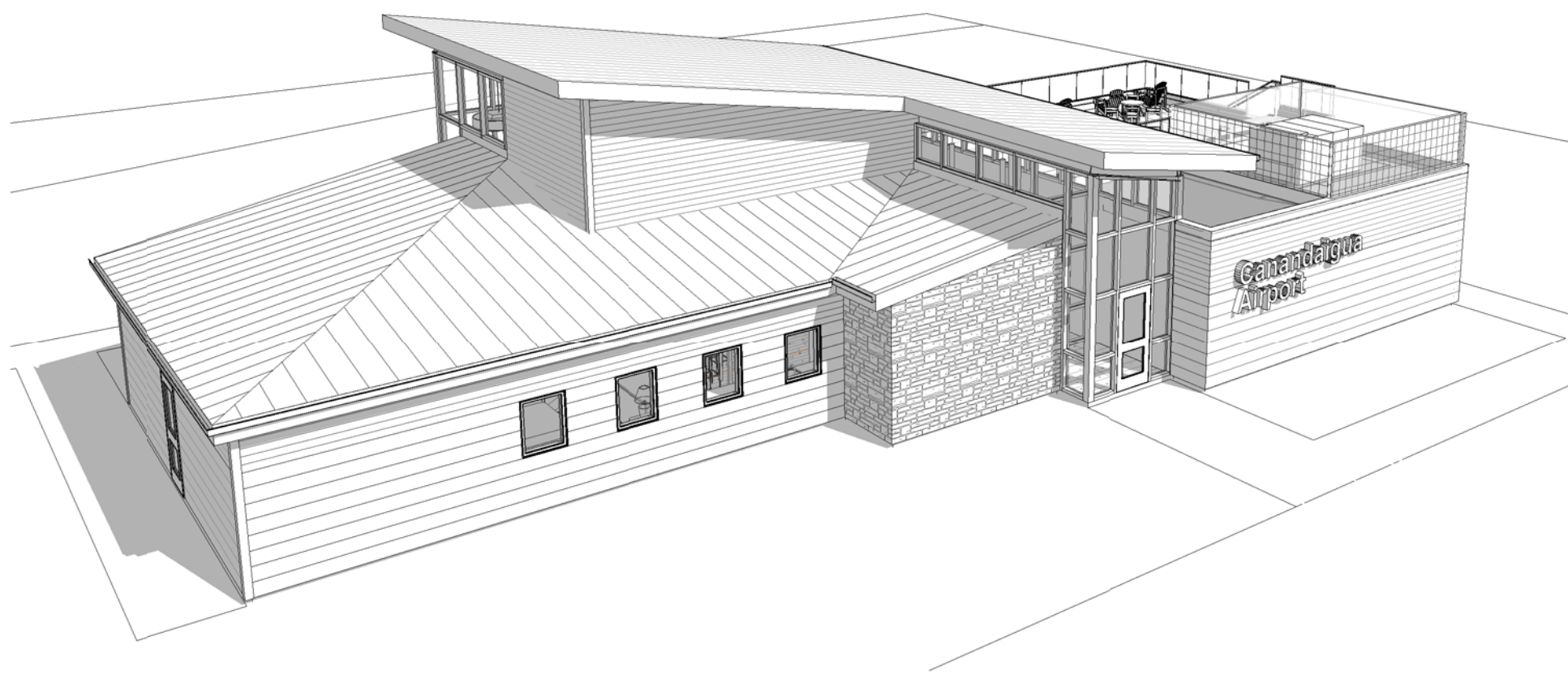
3 3D View - Landside Left



4 3D View - Landside Right





5 3D View - Aerial Airside



6 3D View - Aerial Landside

IT IS A VIOLATION OF LAW FOR ANY PERSON, UNLESS THEY ARE ACTING UNDER THE DIRECT DIRECTION OF A LICENSED PROFESSIONAL ENGINEER, ARCHITECT, LANDSCAPE ARCHITECT, OR LAND SURVEYOR, TO ALTER AN ITEM IN ANY WAY. IF AN ITEM BEARING THE STAMP OF A LICENSED PROFESSIONAL IS ALTERED, THE ALTERING ENGINEER, ARCHITECT, LANDSCAPE ARCHITECT, OR LAND SURVEYOR SHALL STAMP THE DOCUMENT AND INCLUDE THE NOTATION "ALTERED BY" FOLLOWED BY THEIR SIGNATURE, THE DATE OF SUCH ALTERATION, AND A SPECIFIC DESCRIPTION OF THE ALTERATION.

SEAL	 LOMBARDINI+LAYTON architecture 45 LEWIS STREET BINGHAMTON, NY 13901 (p) 607.217.7013	REV	DATE	DESCRIPTION	BY	CANANDAIGUA AIRPORT TOWN OF CANANDAIGUA, STATE OF NEW YORK GA TERMINAL BUILDING		
PRELIMINARY PLANS	 McFarland Johnson 15 FISHERS ROAD; SUITE 200 PITTSFORD, NEW YORK, 14534 P: 607.723.9421 F: 607.723.4979					Exterior Perspective Views		
		SCALE:		DESIGN: Designer		A202 OF xx		
		DRAWN: Author		PROJECT: 19.011				
		CHECKED: Checker		DATE: 10/02/2020				