

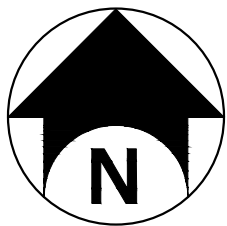
ANSI D 22x34
I:\Akoustis Inc\014208.01 Akoustis - Utility Plant Addition\4.0 Dwg\4.1 Civil\Sheets\1420801 C000.dwg
3/27/2020 5:44 PM

DEVELOPMENT PLANS FOR UTILITY PLANT ADDITION

AKOUSTIS TECHNOLOGIES
5450 CAMPUS DRIVE
CANANDAIGUA, COUNTY OF ONTARIO
STATE OF NEW YORK



LOCATION MAP
1" = 1000'



DRAWING INDEX		
C000	COVER SHEET	1
A201	EXTERIOR ELEVATIONS	2
X100	EXISTING CONDITIONS PLAN	3
C080	DEMOLITION PLAN	4
C101	FINAL SITE PLAN	5
C110	UTILITY, GRADING & EROSION AND SEDIMENT CONTROL PLAN	6
C500	SITE & UTILITY DETAILS	7
C501	UTILITY & EROSION AND SEDIMENT CONTROL DETAILS DETAILS	8
E101	ELECTRICAL SITE PLAN	9
E201	ELECTRICAL DETAILS	10

**Dig Safely.
New York**
800-962-7962
www.digsafelynewyork.org
☐ Call Before You Dig
☐ Wait The Required Time
☐ Confirm Utility Response
☐ Respect the Marks
☐ Dig With Care

PLANNING BOARD

CANANDAIGUA PLANNING BOARD APPROVED

CHAIRMAN	DATE
TOWN ENGINEER	DATE

UTILITY PLANT ADDITION

5450 CAMPUS DRIVE
CANANDAIGUA, NY 14424

AKOUSTIS TECHNOLOGIES

5450 CAMPUS DRIVE
CANANDAIGUA, NY 14424



Bergmann Associates, Architects, Engineers,
Landscape Architects & Surveyors, D.P.C.
280 East Broad Street
Suite 200
Rochester, NY 14604

office: 585.232.5135
fax: 585.232.4652

www.bergmannpc.com

DATE	DESCRIPTION
3/26/2020	ADDENDUM #1

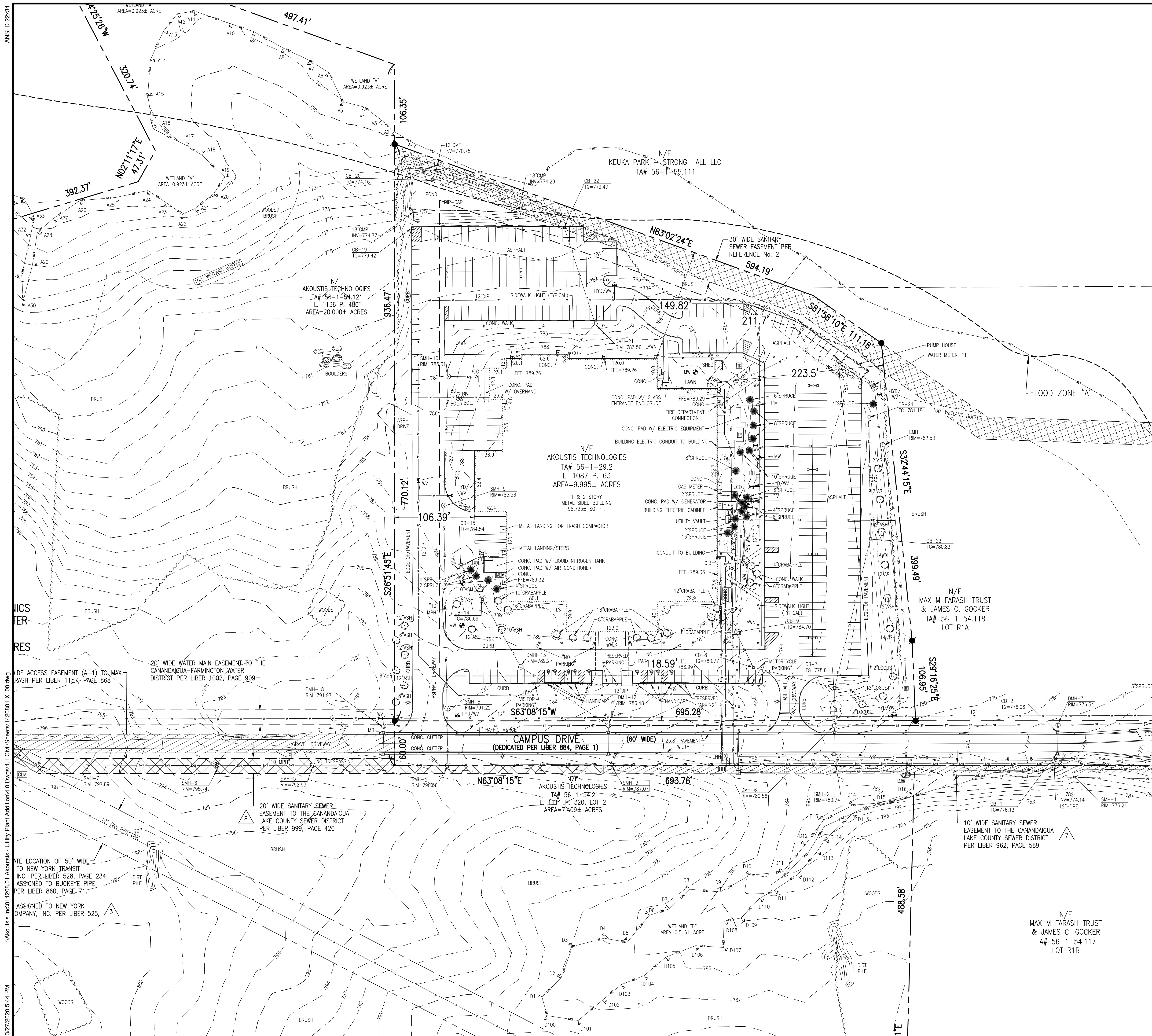


Copyright © Bergmann Associates, Architects, Engineers,
Landscape Architects & Surveyors, D.P.C.

Project Manager: K. CURRAN, PE	Checked By: R. DARLING, PE
Designed By: P. HOLTSBERGER, EIT	Drawn By: P. HOLTSBERGER, EIT
Date Issued: 3/19/2020	Project Number: 14208.01

COVER SHEET

Drawing Number:
C000

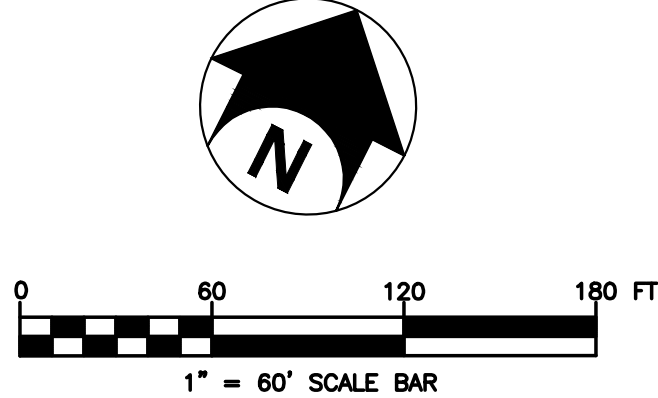


EXISTING FEATURES LEGEND:

- BUSH
- CONIFEROUS TREE
- DECIDUOUS TREE
- STUMP
- ONE-POST SIGN
- TWO-POST SIGN
- REBAR FOUND
- IRON PIPE FOUND
- NAIL FOUND
- CONCRETE MONUMENT
- WALKWAY LIGHT
- LIGHT POLE
- UTILITY POLE
- UTILITY POLE WITH LIGHT
- LIGHT POLE (TWO HEAD)
- ELECTRIC BOX
- ELECTRIC METER
- TELEPHONE BOX
- GAS METER
- GAS VALVE
- WATER VALVE
- HYDRANT
- HANDHOLES
- CATCH BASIN
- SANITARY SEWER MANHOLE
- SANITARY SEWER STUB
- STORM SEWER MANHOLE
- ELECTRIC MANHOLE
- TELEPHONE MANHOLE
- BOLLARD/POST
- EDGE OF WOODS
- CHAIN LINK FENCE
- WOOD FENCE
- IRON FENCE
- GUIDE RAIL
- SANITARY SEWER LINE
- STORM SEWER LINE
- UNDERGROUND WATER LINE
- UNDERGROUND GAS LINE
- UNDERGROUND TELEPHONE LINE
- UNDERGROUND ELECTRIC LINE
- UNDERGROUND FIBER OPTIC LINE
- WETLAND BOUNDARY
- 100' WETLAND BUFFER
- MAJOR CONTOUR (5' INTERVAL)
- MINOR CONTOUR (1' INTERVAL)
- PROPERTY LINE
- ADJOINING PROPERTY LINE
- EASEMENT LINE
- RIGHT OF WAY LINE

NOTES:

- THIS PLAN IS BASED ON A SURVEY ENTITLED "EXISTING CONDITIONS SURVEY OF SITE INFORMATION", DATED MARCH 20, 2012, PREPARED BY BERGMANN ASSOCIATES. THE UNDERGROUND STRUCTURES AND UTILITIES SHOWN ON THESE PLANS HAVE BEEN PLOTTED FROM AVAILABLE SURVEYS AND RECORD MAPS. BERGMANN DOES NOT CERTIFY TO THE ACCURACY OF THE LOCATION AND/OR COMPLETENESS OF UNDERGROUND UTILITIES. IT IS THE CONTRACTOR'S RESPONSIBILITY TO VERIFY THE LOCATION AND EXTENT OF ALL UNDERGROUND STRUCTURES AND UTILITIES PRIOR TO ANY DIGGING OR CONSTRUCTION ACTIVITIES IN THEIR VICINITY. THE CONTRACTOR SHALL HAVE ALL EXISTING UTILITIES FIELD STAKED AT LEAST THREE DAYS BEFORE STARTING WORK BY CALLING 1-800-962-7982.
- SITE IS LOCATED WITHIN THE 100-YEAR (A) AND 500-YEAR FLOODPLAIN PER FIRM MAP# 360598 0005 C, DATED MARCH 3, 1997.



UTILITY PLANT ADDITION

5450 CAMPUS DRIVE
CANANDAIGUA, NY 14424

AKOUSTIS TECHNOLOGIES

5450 CAMPUS DRIVE
CANANDAIGUA, NY 14424



Bergmann Associates, Architects, Engineers,
Landscape Architects & Surveyors, D.P.C.
280 East Broad Street
Suite 200
Rochester, NY 14604

office: 585.232.5135
fax: 585.232.4652
www.bergmannpc.com

DATE	DESCRIPTION
3/26/2020	ADDENDUM #1

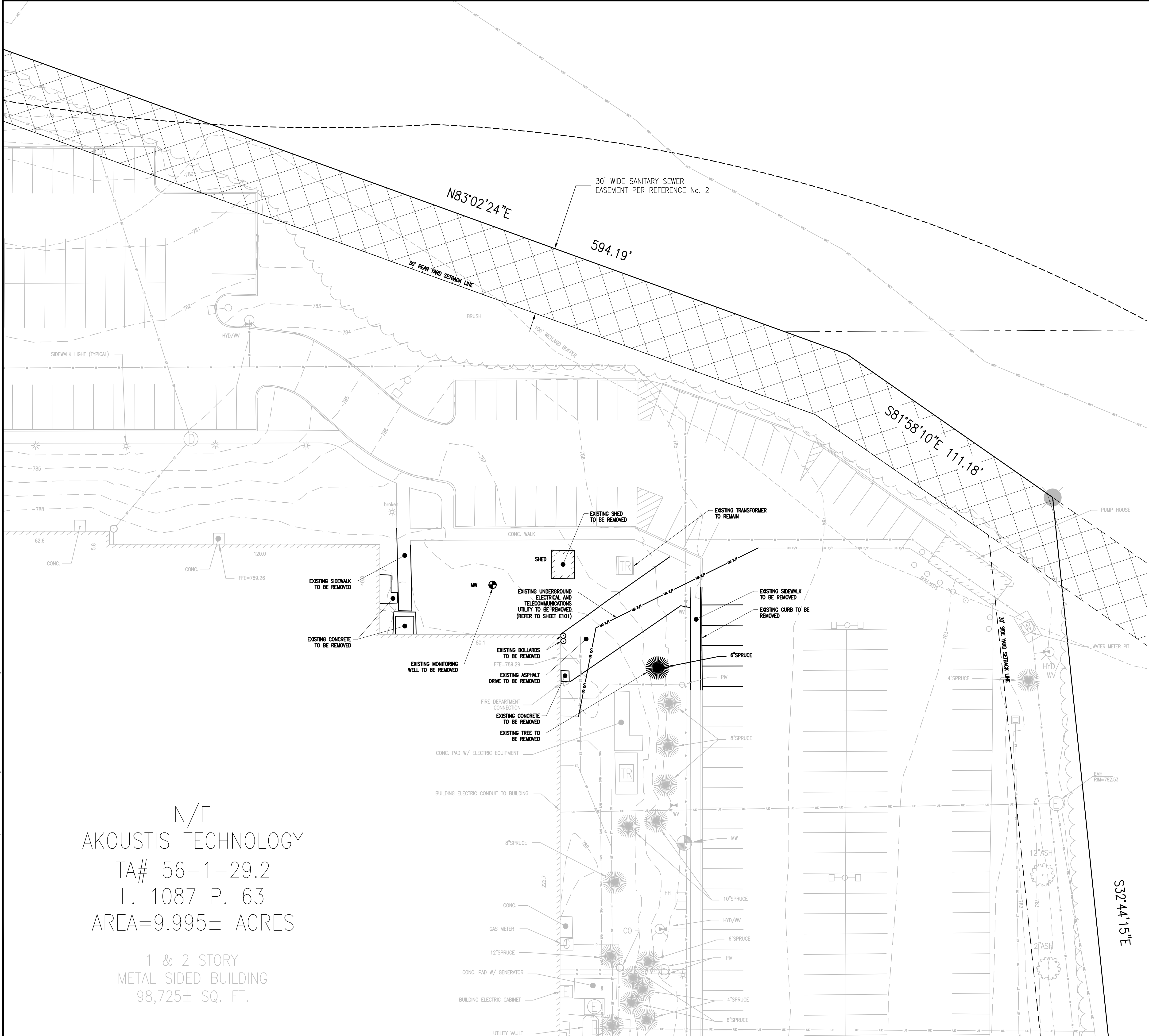


Copyright © Bergmann Associates, Architects, Engineers,
Landscape Architects & Surveyors, D.P.C.

Project Manager: K. CURRAN, PE	Checked By: R. DARLING, PE
Designed By: P. HOLSBERGER, EIT	Drawn By: P. HOLSBERGER, EIT
Date Issued: 3/19/2020	Project Number: 14208.01

EXISTING CONDITIONS PLAN

X100



DEMOLITION NOTES:

1. ALL REQUIRED DEMOLITION PERMITS MUST BE OBTAINED FROM ALL REQUIRED AGENCIES PRIOR TO COMMENCEMENT OF WORK.
2. ALTHOUGH NOT ANTICIPATED, ANY ASBESTOS REMOVAL MUST BE DONE BY A CERTIFIED ASBESTOS REMOVAL CONTRACTOR.
3. ALL UTILITY COMPANIES MUST BE NOTIFIED A MINIMUM OF 48 HOURS IN ADVANCE OF DEMOLITION.
4. PROPER FENCING OR PUBLIC PROTECTION DEVICES MUST BE CONSTRUCTED AND MAINTAINED AROUND THE PERIMETER OF THE SITE AT ALL TIMES DURING DEMOLITION PHASE.
5. IT IS THE CONTRACTOR'S RESPONSIBILITY TO CONTROL DUST, DIRT AND DEBRIS DURING DEMOLITION AND CONSTRUCTION PHASES.
6. THE CONTRACTOR IS RESPONSIBLE FOR REMOVING ALL DEBRIS FROM THE SITE AND DISPOSING THE DEBRIS IN A LAWFUL MANNER. THE CONTRACTOR IS RESPONSIBLE FOR OBTAINING ALL PERMITS REQUIRED FOR DEMOLITION AND DISPOSAL, INCLUDING ASBESTOS ABATEMENT.

**UTILITY PLANT
ADDITION**

5450 CAMPUS DRIVE
CANANDAIGUA, NY 14424

**AKOUSTIS
TECHNOLOGIES**

5450 CAMPUS DRIVE
CANANDAIGUA, NY 14424



Bergmann Associates, Architects, Engineers,
Landscape Architects & Surveyors, D.P.C.
280 East Broad Street
Suite 200
Rochester, NY 14604

office: 585.232.5135
fax: 585.232.4652

www.bergmannpc.com

DATE	DESCRIPTION
3/26/2020	ADDENDUM #1



Copyright © Bergmann Associates, Architects, Engineers,
Landscape Architects & Surveyors, D.P.C.

Project Manager: K. CURRAN, PE	Checked By: R. DARLING, PE
Designed By: P. HOLSBERGER, EIT	Drawn By: P. HOLSBERGER, EIT
Date Issued: 3/19/2020	Project Number: 14208.01

DEMOLITION PLAN

Drawing Number:

C080

PROJECT DATA

1. APPLICANT:
AKUSTIKS TECHNOLOGIES
5450 CAMPUS DRIVE
CANNABEDIA, NY 14424

2. EXISTING ZONING:
PUD - PLANNED UNIT DEVELOPMENT

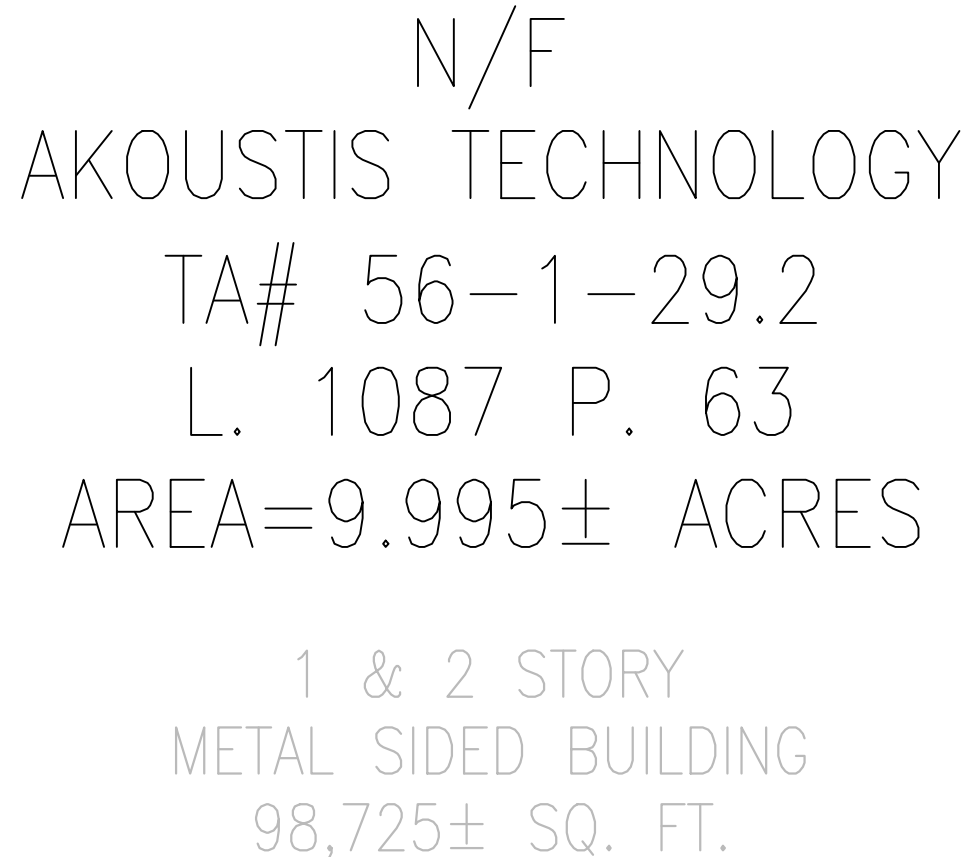
3. LOT AREA:
9.985± ACRES
(435,382 S.F.)

OFF-STREET PARKING SECTION 220-73

PUD - INDUSTRIAL BUSINESS

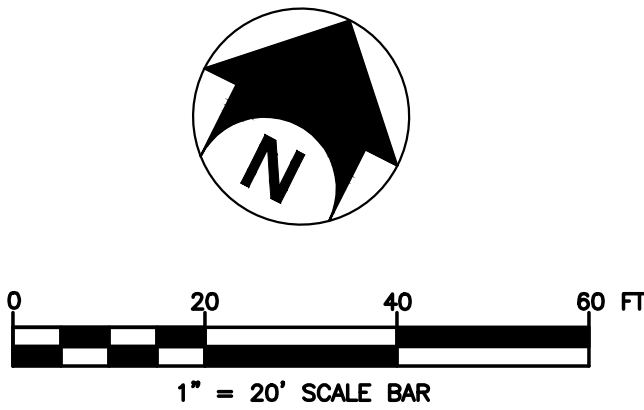
1 SPACE FOR EACH 1,000 SQUARE FEET OF GROSS FLOOR AREA

TOTAL FLOOR AREA	= 147,842 SQUARE FEET
(101,925 S.F. / 1000 S.F.)	= 102 SPACES REQUIRED
	5 ACCESSIBLE SPACES REQUIRED
	317 TOTAL SPACES PROVIDED
	9 ACCESSIBLE SPACES PROVIDED



- ## GENERAL NOTES:
1. THIS PLAN IS BASED ON A SURVEY PREPARED BY BERGMANN DATED MARCH 20, 2012. THE UNDERGROUND STRUCTURES AND UTILITIES SHOWN ON THESE PLANS HAVE BEEN PLOTTED FROM AVAILABLE SURVEYS AND RECORD MAPS. BERGMANN DOES NOT CERTIFY TO THE ACCURACY OF THE LOCATION AND/OR COMPLETION OF UNDERGROUND UTILITIES. IT IS THE CONTRACTOR'S RESPONSIBILITY TO VERIFY THE LOCATION AND EXTENT OF ALL UNDERGROUND STRUCTURES AND UTILITIES PRIOR TO ANY DIGGING OR CONSTRUCTION ACTIVITIES IN THEIR VICINITY. THE CONTRACTOR SHALL HAVE ALL EXISTING UTILITIES FIELD STAKED AT LEAST THREE DAYS BEFORE STARTING WORK BY CALLING 1-800-962-7962.
 2. THE CONTRACTOR SHALL PERFORM ALL WORK IN COMPLIANCE WITH TITLE 29 OF FEDERAL REGULATIONS, PART 1926, SAFETY AND HEALTH REGULATIONS FOR CONSTRUCTION (OSHA).
 3. ALL ROADS AND PRIVATE DRIVES SHALL BE KEPT CLEAN OF MUD, DEBRIS ETC. AT ALL TIMES.
 4. REFER TO ARCHITECTURAL DRAWINGS FOR PRECISE BUILDING DIMENSIONS.
 5. THE CONTRACTOR SHALL CONSULT THE OWNER'S REPRESENTATIVE BEFORE DEVIATING FROM THESE PLANS.
 6. IN ALL TRENCH EXCAVATIONS, CONTRACTOR MUST LAY THE TRENCH SIDE SLOPES BACK TO A SAFE SLOPE, USE A TRENCH SHIELD OR PROVIDE SHEETING AND BRACING.
 7. ALL EXISTING SURFACE APPURTENANCES (I.E. WATER VALVES, CATCH BASIN FRAMES AND GRATES, MANHOLE COVERS) WITHIN THE PROJECT LIMITS SHALL BE ADJUSTED TO FINISHED GRADE.
 8. AREAS DISTURBED OR DAMAGED AS PART OF THIS PROJECT'S CONSTRUCTION THAT ARE OUTSIDE OF THE PRIMARY WORK AREA SHALL BE RESTORED, AT THE CONTRACTOR'S EXPENSE, TO THE SATISFACTION OF THE OWNER'S REPRESENTATIVE.
 9. THE CONTRACTOR SHALL CALL "DIG SAFELY NEW YORK" AT 1-800-962-7962 AT LEAST 3 WORKING DAYS (EXCLUDING WEEKENDS AND HOLIDAYS) PRIOR TO CONSTRUCTION.
 10. ALL WORK SHALL BE DONE IN ACCORDANCE WITH THE APPLICABLE CODES, ORDINANCES, DESIGN STANDARDS AND STANDARD SPECIFICATIONS OF THE AGENCIES WHICH HAVE THE RESPONSIBILITY OF REVIEWING PLANS AND SPECIFICATIONS FOR CONSTRUCTION OF ALL ITEMS INCLUDED IN THESE PLANS.
 11. UNLESS SPECIFICALLY STATED, THE CONTRACTOR SHALL APPLY FOR AND OBTAIN ALL NECESSARY PERMITS AS REQUIRED FOR CONSTRUCTION OF THIS PROJECT. ALL ITEMS COMMENCING TO THE BEGINNING OF WORK FROM THE PREVIOUSLY MENTIONED AGENCIES.
 12. THE CONTRACTOR WILL BE REQUIRED TO ASSUME SOLE RESPONSIBILITY FOR JOB SITE CONDITIONS DURING THE COURSE OF CONSTRUCTION OF THE PROJECT, INCLUDING THE SAFETY OF ALL PERSONS AND PROPERTY. THIS REQUIREMENT SHALL BE MADE TO APPLY CONTINUOUSLY AND NOT BE LIMITED TO NORMAL WORKING HOURS.
 13. WHEN ANY EXISTING UTILITY REQUIRES ADJUSTMENT OR RELOCATION, THE CONTRACTOR SHALL NOTIFY THE PROPER UTILITY COMPANY AND COORDINATE THE WORK. THE CONTRACTOR THERE SHALL BE NO CLAIM MADE BY THE CONTRACTOR FOR ANY COSTS CAUSED BY DELAYS IN CONSTRUCTION DUE TO THE ADJUSTMENT OR RELOCATION OF UTILITIES.
 14. THE CONTRACTOR IS TO VERIFY THAT THE PLANS AND SPECIFICATIONS THAT THEY ARE BUILDING FROM ARE THE VERY LATEST PLANS AND SPECIFICATIONS THAT HAVE BEEN APPROVED BY ALL APPLICABLE PERMIT-ISSUING AGENCIES AND THE RECORDING AGENCIES. THERE SHALL BE NO CLAIM MADE BY THE CONTRACTOR FOR ANY COSTS CAUSED BY DELAYS IN CONSTRUCTION DUE TO RECEIVING THE FINAL APPROVAL AND PERMITS HAVING TO BE ADJUSTED OR RE-DONE, SHALL BE DONE AT THE CONTRACTOR'S EXPENSE.
 15. SHOULD THE CONTRACTOR ENCOUNTER CONFLICT BETWEEN THESE PLANS AND SPECIFICATIONS, EITHER AMONG THEMSELVES OR WITH THE REQUIREMENTS OF ANY OF ALL REVIEWING AND PERMIT-ISSUING AGENCIES, THEY SHALL SEEK CLARIFICATION IN WRITING FROM THE CONTRACTING MANAGER BEFORE COMMENCING ANY OF THE WORK. THE CONTRACTOR WILL BE RESPONSIBLE TO DO SO AT THE SOLE EXPENSE TO THE CONTRACTOR.
 16. THE CONTRACTOR SHALL FURNISH AS-BUILT DRAWINGS INDICATING ALL CHANGES AND DEVIATIONS FROM APPROVED DRAWINGS.
 17. ALL SIGNS AND TRAFFIC CONTROL MEASURES DURING CONSTRUCTION AND MAINTENANCE ACTIVITIES SHALL BE CONSTRUCTED AND INSTALLED PER THE LATEST EDITION OF THE MANUAL OF UNIFORM TRAFFIC CONTROL DEVICES (M.U.T.C.D.).

1. NO PRELIMINARY SITE PLAN REVIEW WAS REQUIRED.



PLANNING BOARD	
CANANDAIGUA PLANNING BOARD APPROVED	
CHAIRMAN	DATE
TOWN ENGINEER	DATE

DATE	DESCRIPTION
3/26/2020	ADDENDUM #1



Copyright © Bergmann Associates, Architects, Engineers,
Landscape Architects & Surveyors, D.P.C

Project Manager: K. CURRAN, PE	Checked By: R. DARLING, PE
Designed By: P. HOLSBERGER, EIT	Drawn By: P. HOLSBERGER, EIT
Date Issued: 3/19/2020	Project Number: 14208.01

FINAL SITE PLAN

Drawing Number

C100

UTILITY NOTES:

1. ALL WORKMANSHIP, MATERIALS, AND CONSTRUCTION PRACTICES SHALL CONFORM TO THE REQUIREMENTS OF TOWN OF CANANDAIGUA OR THE AGENCY HAVING JURISDICTION OVER THE APPLICABLE UTILITY.
2. CONTRACTOR IS RESPONSIBLE FOR REPAIRS OF DAMAGE TO ANY EXISTING UTILITY DURING CONSTRUCTION AT NO COST TO THE OWNER.
3. ALL FILL MATERIAL IS TO BE IN PLACE, AND COMPACTED BEFORE INSTALLATION OF PROPOSED UTILITIES.
4. CONTRACTOR SHALL NOTIFY THE UTILITY COMPANIES 72 HOURS BEFORE CONNECTING TO ANY EXISTING LINE.
5. IN THE EVENT OF A VERTICAL CONFLICT BETWEEN WATERLINES, SANITARY LINES, STORM LINES AND GAS LINES (EXISTING AND PROPOSED), THE CONTRACTOR SHALL NOTIFY THE OWNER'S REPRESENTATIVE AS SOON AS THE CONFLICT IS DISCOVERED.
6. TOPS OF EXISTING UTILITY STRUCTURES SHALL BE ADJUSTED TO FINISHED GRADE.
7. EXISTING UTILITIES SHALL BE VERIFIED IN FIELD PRIOR TO INSTALLATION OF ANY NEW LINES.
8. CONTRACTOR IS RESPONSIBLE FOR COMPLYING TO THE CONSTRUCTION REQUIREMENTS OF THE UTILITY OWNERS.
9. THE CONTRACTOR IS SPECIFICALLY CAUTIONED THAT THE LOCATION AND/OR ELEVATION OF EXISTING UTILITIES AS SHOWN ON THESE PLANS IS BASED ON RECORDS OF THE VARIOUS UTILITY COMPANIES, AND WHERE POSSIBLE, MEASUREMENTS TAKEN IN THE FIELD. THE INFORMATION IS NOT TO BE RELIED ON AS BEING EXACT OR COMPLETE. THE CONTRACTOR MUST CALL THE APPROPRIATE UTILITY COMPANIES AT LEAST 72 HOURS BEFORE ANY EXCAVATION TO REQUEST EXACT FIELD LOCATION OF UTILITIES. IT SHALL BE THE RESPONSIBILITY OF THE CONTRACTOR TO RELOCATE ALL EXISTING UTILITIES WHICH CONFLICT WITH THE PROPOSED IMPROVEMENTS SHOWN ON THE PLANS.
10. CONTRACTOR SHALL COORDINATE WITH ALL UTILITY COMPANIES FOR INSTALLATION REQUIREMENTS AND SPECIFICATIONS.
11. CONTRACTOR SHALL REFER TO ARCHITECTURAL PLANS AND SPECIFICATIONS FOR ACTUAL LOCATION AND ELEVATIONS OF ALL UTILITY ENTRANCES TO INCLUDE SANITARY SEWER LATERALS, DOMESTIC AND FIRE PROTECTION WATER SERVICE, ELECTRICAL, TELEPHONE, AND GAS SERVICE. CONTRACTOR SHALL COORDINATE INSTALLATION OF UTILITIES, IN SUCH A MANNER AS TO AVOID CONFLICTS AND ASSURE PROPER DEPTHS ARE ACHIEVED AS WELL AS COORDINATING WITH UTILITY REQUIREMENTS AS TO LOCATION AND SCHEDULING FOR TIE-INS/CONNECTIONS PRIOR TO CONNECTING TO EXISTING UTILITIES.
12. THE CONTRACTOR SHALL CONDUCT ALL REQUIRED TESTS TO THE SATISFACTION OF THE RESPECTIVE UTILITY COMPANIES AND THE OWNER'S REPRESENTATIVE.
13. CONTRACTOR SHALL COMPLY TO THE FULLEST EXTENT WITH THE LATEST STANDARDS OF OSHA DIRECTIVES OR ANY OTHER AGENCY HAVING JURISDICTION FOR EXCAVATION AND TRENCHING PROCEDURES. THE CONTRACTOR SHALL USE SUPPORT SYSTEMS, SLOPING, BENCHING, AND OTHER MEANS OF PROTECTION. THIS TO INCLUDE BUT NOT LIMITED TO ACCESS AND EGRESS FROM ALL EXCAVATION AND TRENCHING. CONTRACTOR IS RESPONSIBLE TO COMPLY WITH PERFORMANCE CRITERIA FOR OSHA.
14. ALL UTILITIES BELOW PAVED AREAS SHALL BE BACKFILLED WITH 100% GRANULAR MATERIAL (OR APPROVED OTHER) AND COMPACTED TO 95% OF ITS MAXIMUM UNIT WEIGHT.

EROSION CONTROL NOTES:

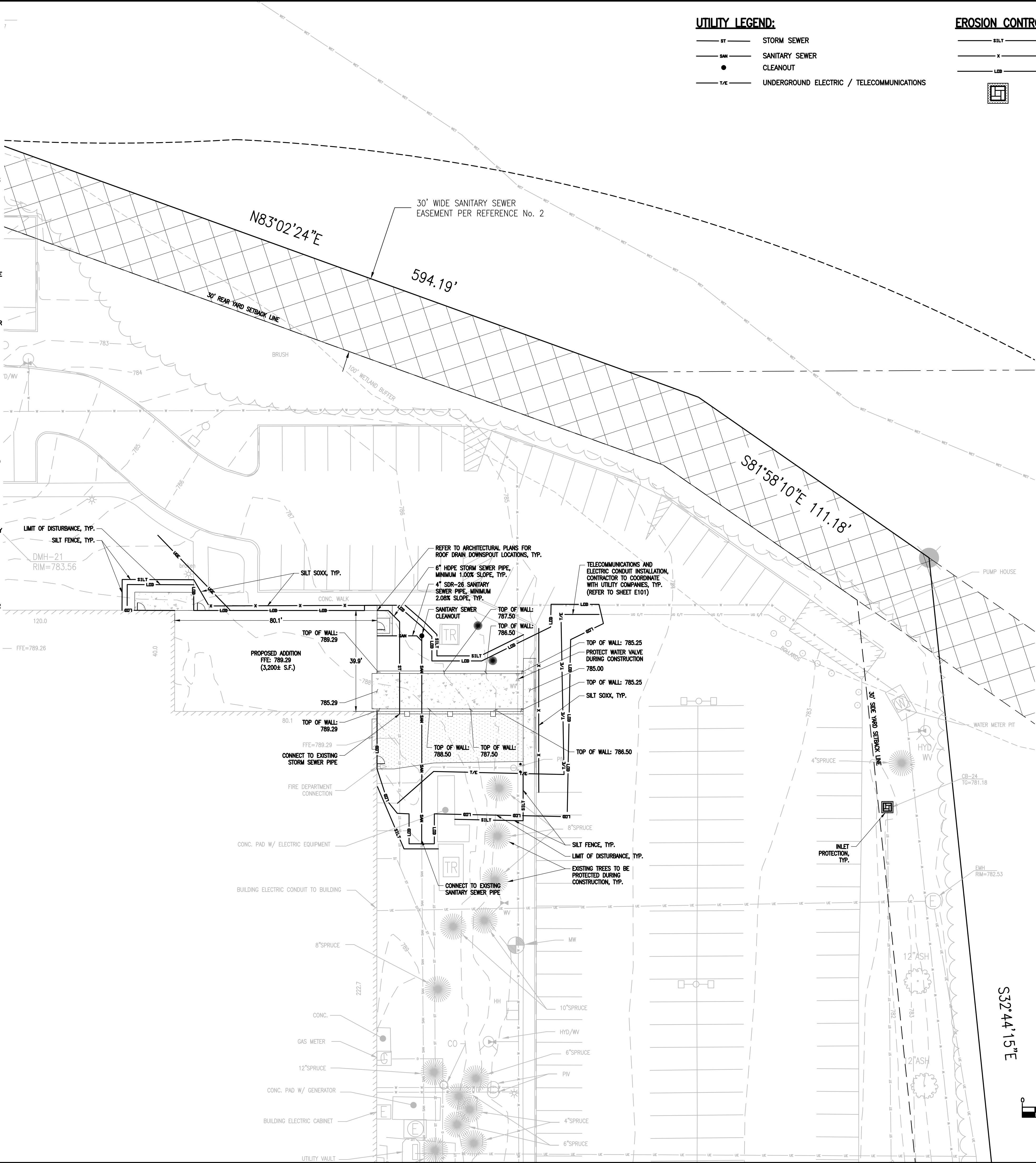
1. THE DEVELOPER SHALL PROVIDE A QUALIFIED INSPECTOR TO INSPECT THE PROJECT AT THE END OF EACH WORK WEEK AND PROVIDE A REPORT AT LEAST ONCE PER WEEK.
2. INSTALL SILT FENCE, DIVERSION SWALES/BERMS, CHECK DAMS AND ALL OTHER EROSION CONTROL MEASURES AS INDICATED ON THE PLAN PRIOR TO THE START OF ANY EXCAVATION WORK. EROSION CONTROL MEASURES WILL BE IMPLEMENTED IN ACCORDANCE WITH THE NEW YORK STATE GUIDELINES FOR URBAN EROSION SEDIMENT CONTROL MANUAL, NEW YORK STATE HEALTH DEPARTMENT, AND THE GOVERNING TOWN OF CANANDAIGUA REQUIREMENTS.
3. REMOVE AND STOCKPILE TOPSOIL AS DIRECTED BY THE CONSTRUCTION MANAGER. REPLACE TOPSOIL TO A MINIMUM 4" DEPTH. ALL DISTURBED AREAS TO BE HYDROSEEDING AS DIRECTED BY THE OWNER'S REPRESENTATIVE TO PROMOTE VEGETATION AS SOON AS PRACTICABLE.
4. IF THE SEASONS PROHIBITS TEMPORARY SEEDING, THE DISTURBED AREAS WILL BE MULCHED WITH STRAW HAY OR EQUIVALENT AND ANCHORED IN ACCORDANCE WITH THE "STANDARDS", NETTING OR LIQUID MULCH BINDER.
5. CONTRACTOR SHALL BE RESPONSIBLE FOR THE MAINTENANCE AND REMOVAL OF TEMPORARY SEDIMENTATION CONTROLS. EROSION CONTROL MEASURES SHALL NOT BE REMOVED BEFORE 80% UNIFORM VEGETATION HAS BEEN ACHIEVED.
6. ALL EROSION CONTROL MEASURES ARE TO BE REPLACED WHENEVER THEY BECOME CLOGGED OR INOPERABLE AND SHALL BE REPLACED WHEN THEY HAVE REACHED THE DESIGN LIFE INDICATED IN THE NYS GUIDELINES FOR URBAN EROSION SEDIMENT CONTROL DESIGN MANUAL.
7. THE CONTRACTOR SHALL BE RESPONSIBLE FOR RESTORATION OF TOPSOIL TO ALL DISTURBED AREAS. IT IS THE CONTRACTOR'S RESPONSIBILITY TO MAINTAIN EROSION CONTROL MEASURES AT ALL TIMES.
8. THE CONTRACTOR SHALL DESIGNATE A MEMBER OF HIS/HER FIRM TO BE RESPONSIBLE TO MONITOR EROSION CONTROL, EROSION CONTROL STRUCTURES, TREE PROTECTION AND PRESERVATION THROUGHOUT CONSTRUCTION.
9. ALL DISTURBED AREAS SHALL BE FINISH GRADED TO PROMOTE VEGETATION ON ALL EXPOSED AREAS AS SOON AS PRACTICABLE. STABILIZATION PRACTICES (TEMPORARY/PERMANENT SEEDING, MULCHING, GEOTEXTILES, ETC.) MUST BE IMPLEMENTED WITHIN SEVEN (7) DAYS WHERE CONSTRUCTION ACTIVITIES HAVE TEMPORARILY OR PERMANENTLY CEASED, AND NOT EXPECTED TO RESUME WITHIN FOURTEEN (14) DAYS.
10. PAVED ROADWAYS MUST BE KEPT CLEAN AT ALL TIMES. ALL CONSTRUCTION DEBRIS AND SEDIMENT SPOILS, DROPPED, WASHED OR TRACKED ONTO PUBLIC RIGHT-OF-WAYS MUST BE REMOVED IMMEDIATELY.
11. DUST SHALL BE CONTROLLED BY WATERING.
12. PERIMETER AREAS SHALL BE TEMPORARILY STABILIZED WITH SEED AND MULCH PROGRESSIVELY A MINIMUM AT THE END OF EACH WEEK WITH 100% PERENNIAL RYEGRASS MIX AT A RATE OF 2-4 LBS PER 1000 SF AND MULCH 90-100 lbs/1000 SF OF WEED FREE STRAW.

UTILITY LEGEND:

- ST STORM SEWER
- SAN SANITARY SEWER
- CLEANOUT
- T/E UNDERGROUND ELECTRIC / TELECOMMUNICATIONS

EROSION CONTROL LEGEND:

- SILT SILT FENCE
- X COMPOST FILTER SOCK
- LDB LIMITS OF EARTH DISTURBANCE (0.21± ACRES)
- PROPOSED INLET PROTECTION



UTILITY PLANT
ADDITION

5450 CAMPUS DRIVE
CANANDAIGUA, NY 14424

AKOUSTIS
TECHNOLOGIES

5450 CAMPUS DRIVE
CANANDAIGUA, NY 14424

BERGMANN
ARCHITECTS ENGINEERS PLANNERS

Bergmann Associates, Architects, Engineers,
Landscape Architects & Surveyors, D.P.C.
280 East Broad Street
Suite 200
Rochester, NY 14604

office: 585.232.5135
fax: 585.232.4652

www.bergmannpc.com

DATE	DESCRIPTION
3/26/2020	ADDENDUM #1



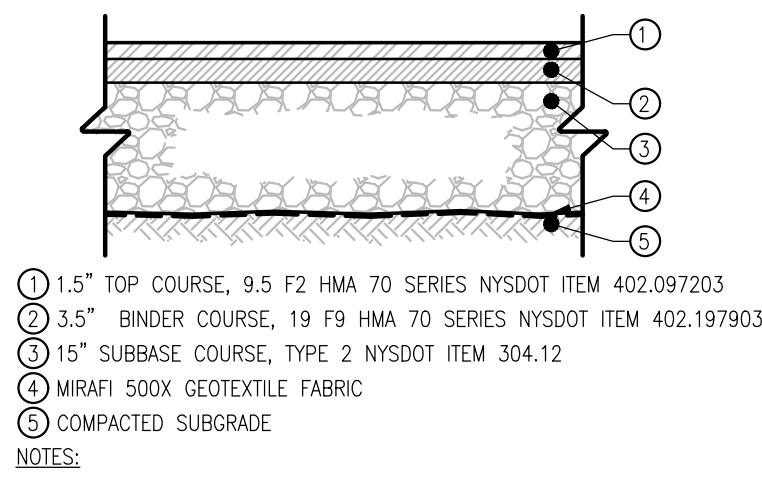
Copyright © Bergmann Associates, Architects, Engineers,
Landscape Architects & Surveyors, D.P.C.

Project Manager: K. CURRAN, PE	Checked By: R. DARLING, PE
Designed By: P. HOLSBERGER, EIT	Drawn By: P. HOLSBERGER, EIT
Date Issued: 3/19/2020	Project Number: 14208.01

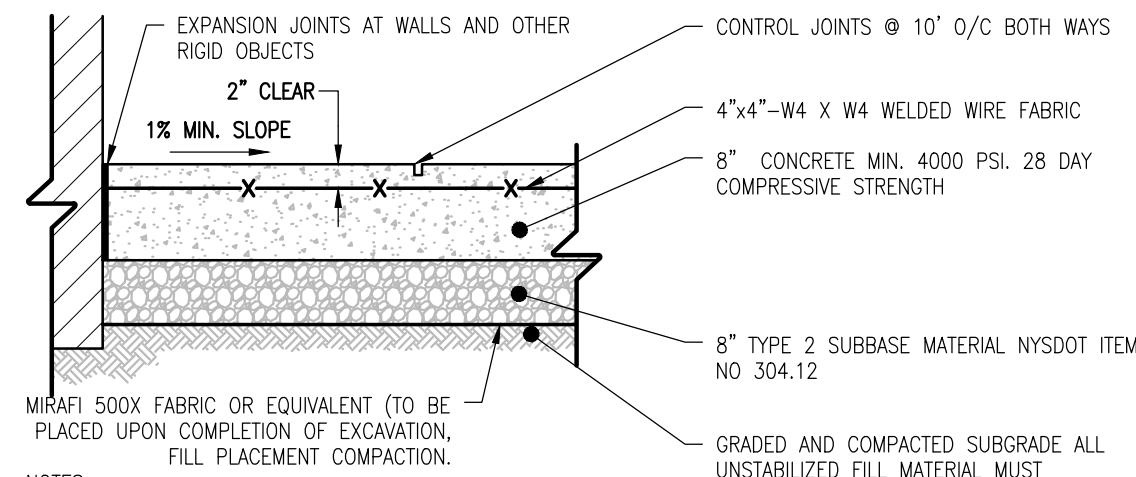
UTILITY, GRADING &
EROSION AND SEDIMENT
CONTROL PLAN

Drawing Number:

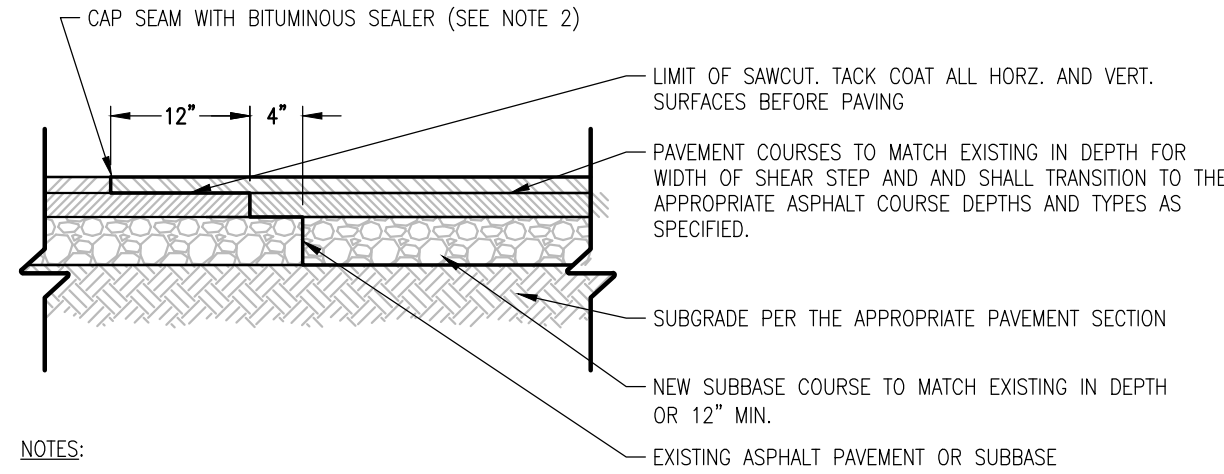
C110



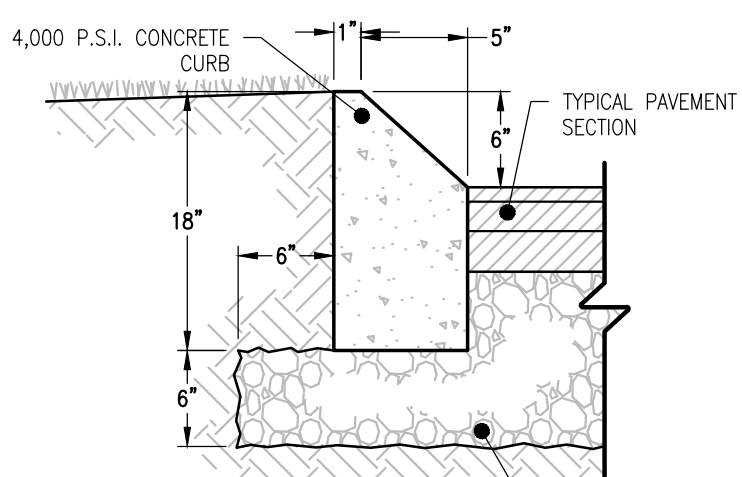
HEAVY DUTY ASPHALT
PAVEMENT SECTION
N.T.S.



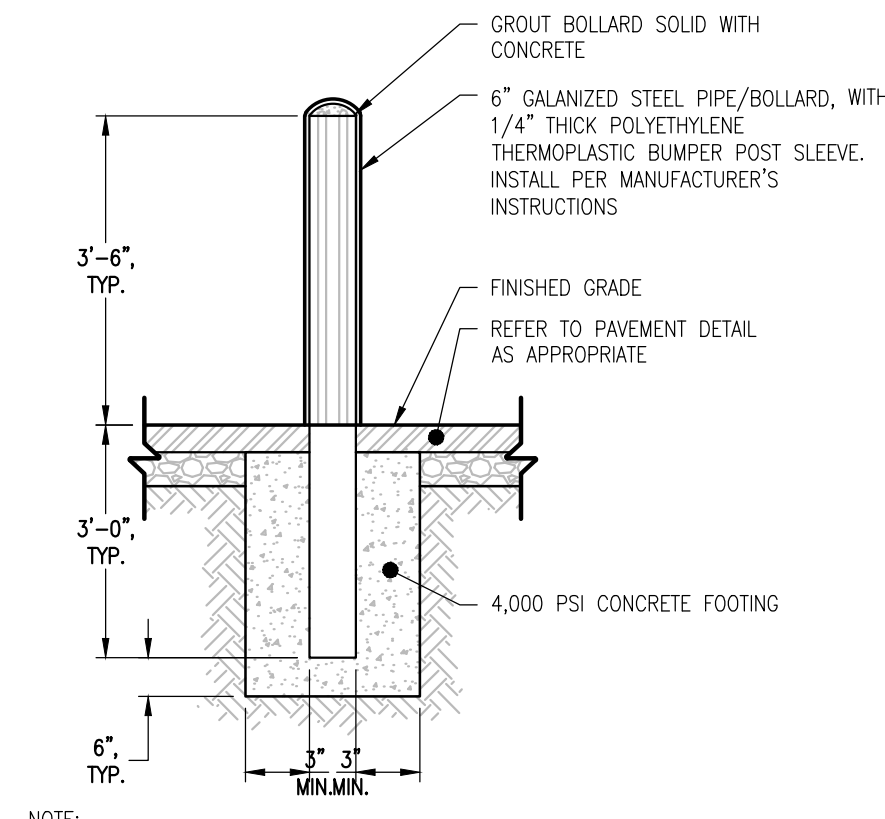
HEAVY DUTY CONCRETE PAVING/SLAB SECTION
N.T.S.



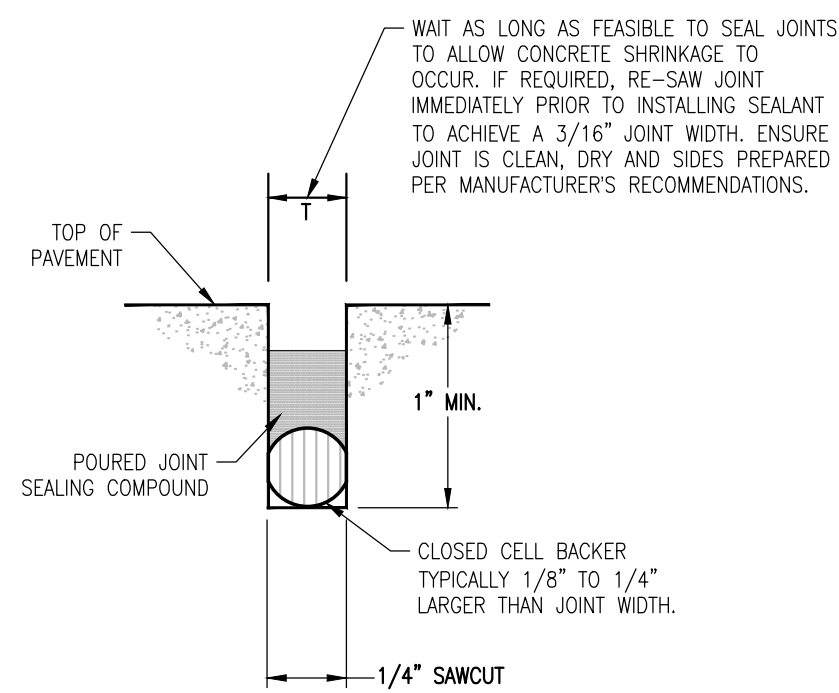
SHEAR STEP DETAIL
N.T.S.



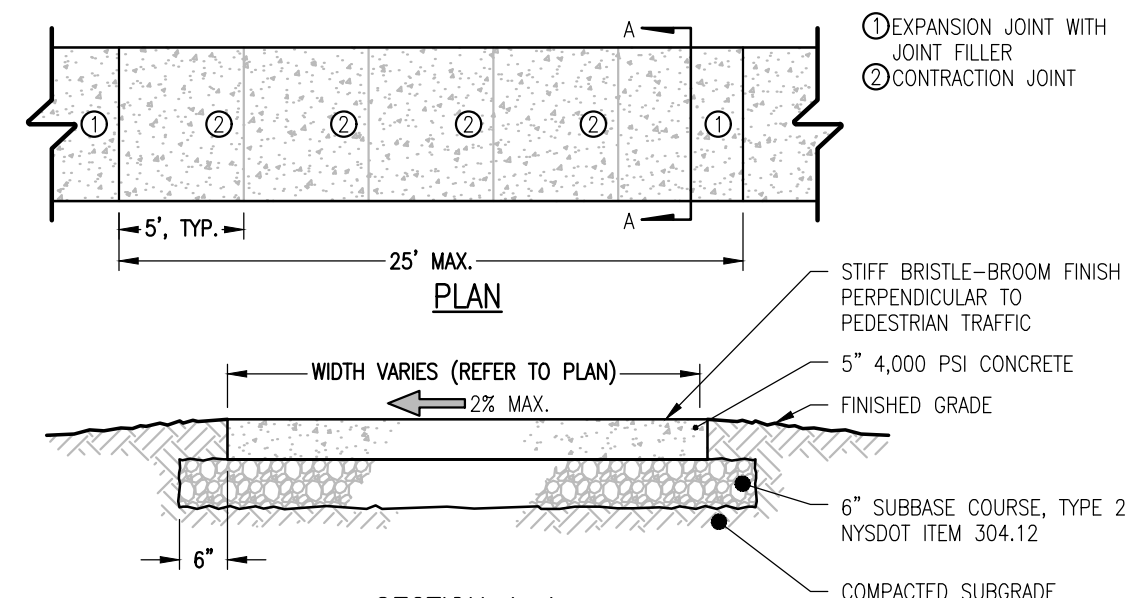
MOUNTABLE CONCRETE
CURB DETAIL
N.T.S.



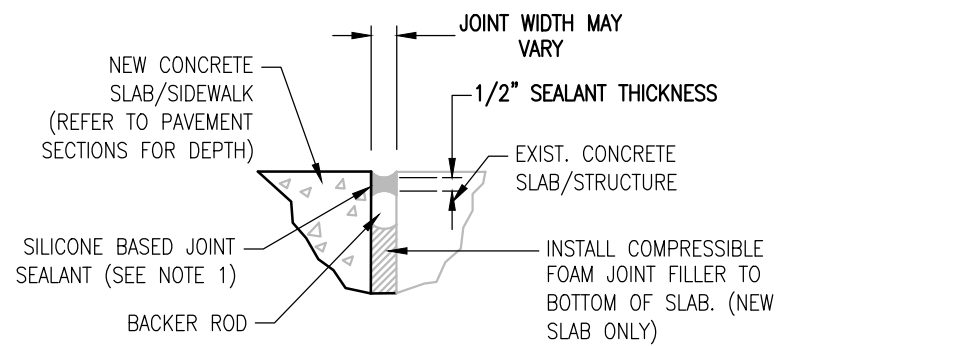
6" GALVANIZED STEEL
PIPE BOLLARD W/SLEEVE
N.T.S.



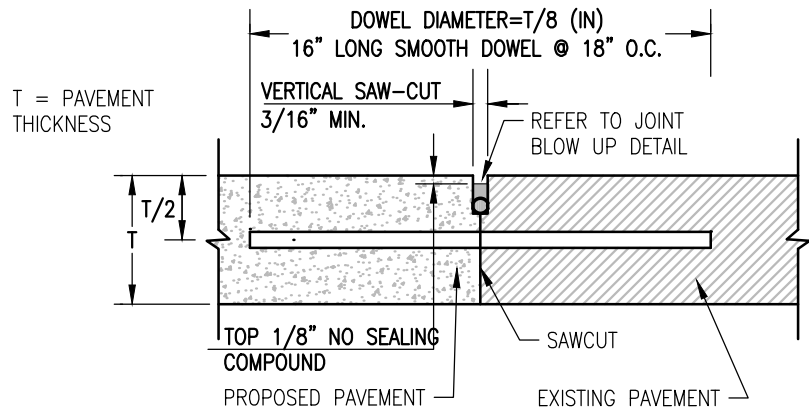
JOINT BLOW-UP DETAIL



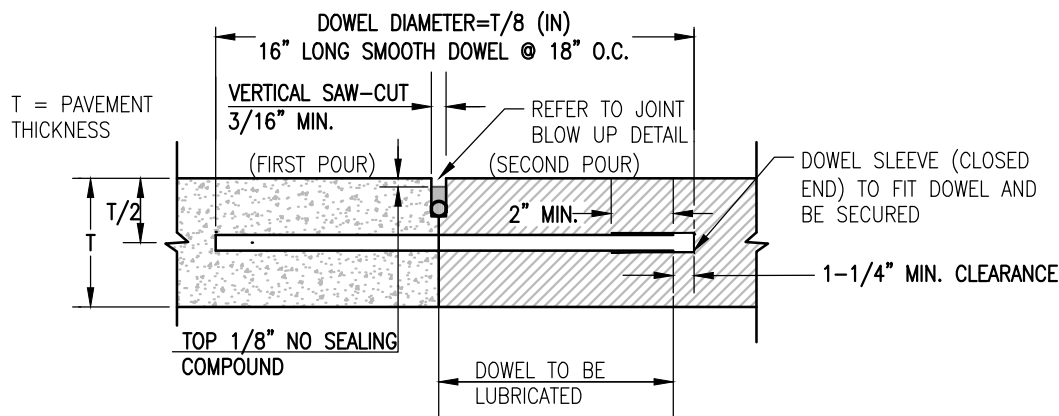
CONCRETE SIDEWALK DETAIL
N.T.S.



ISOLATION JOINT

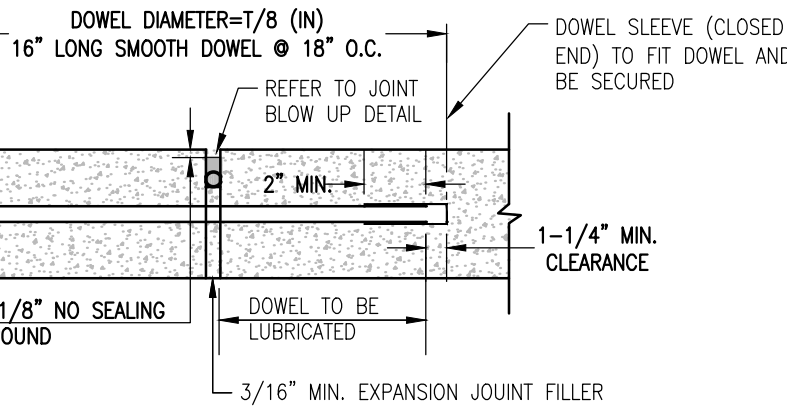


BUTT JOINT

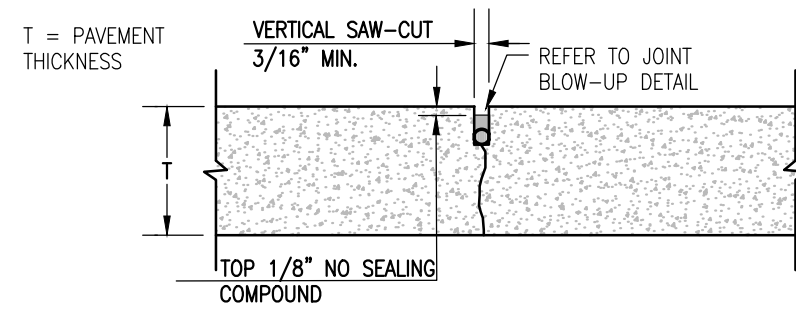


CONSTRUCTION JOINT

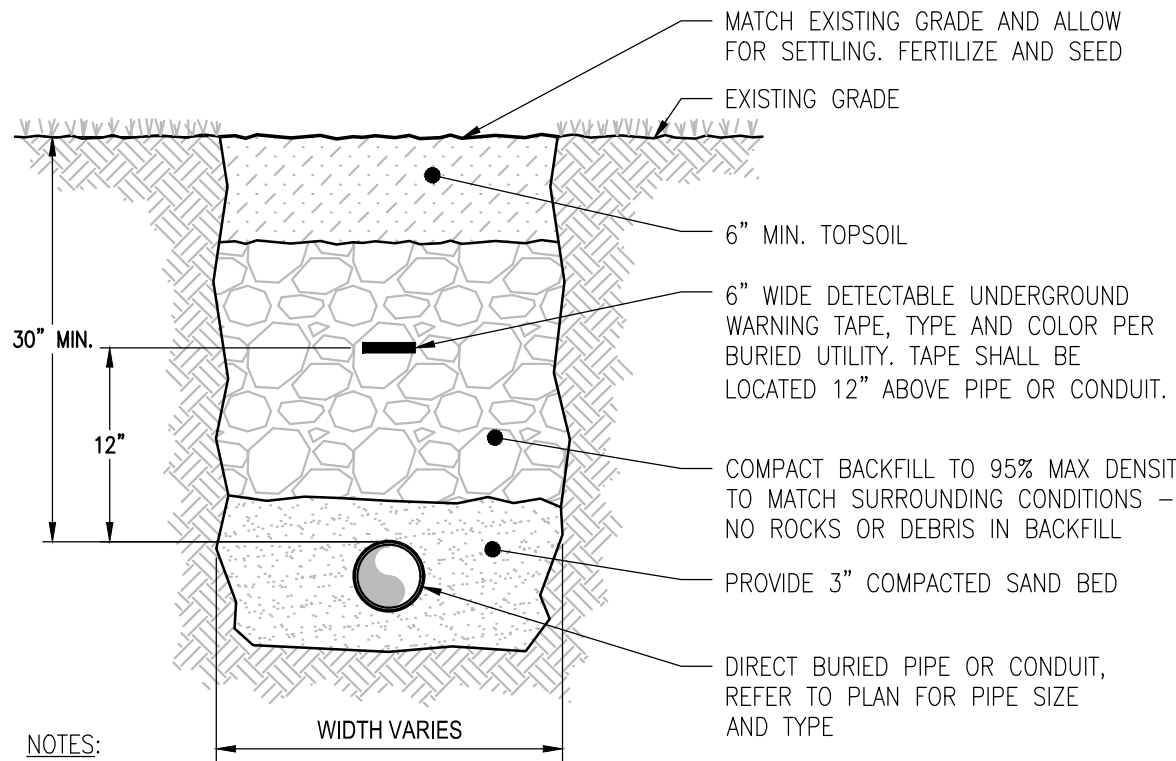
CONCRETE JOINT DETAILS
N.T.S.



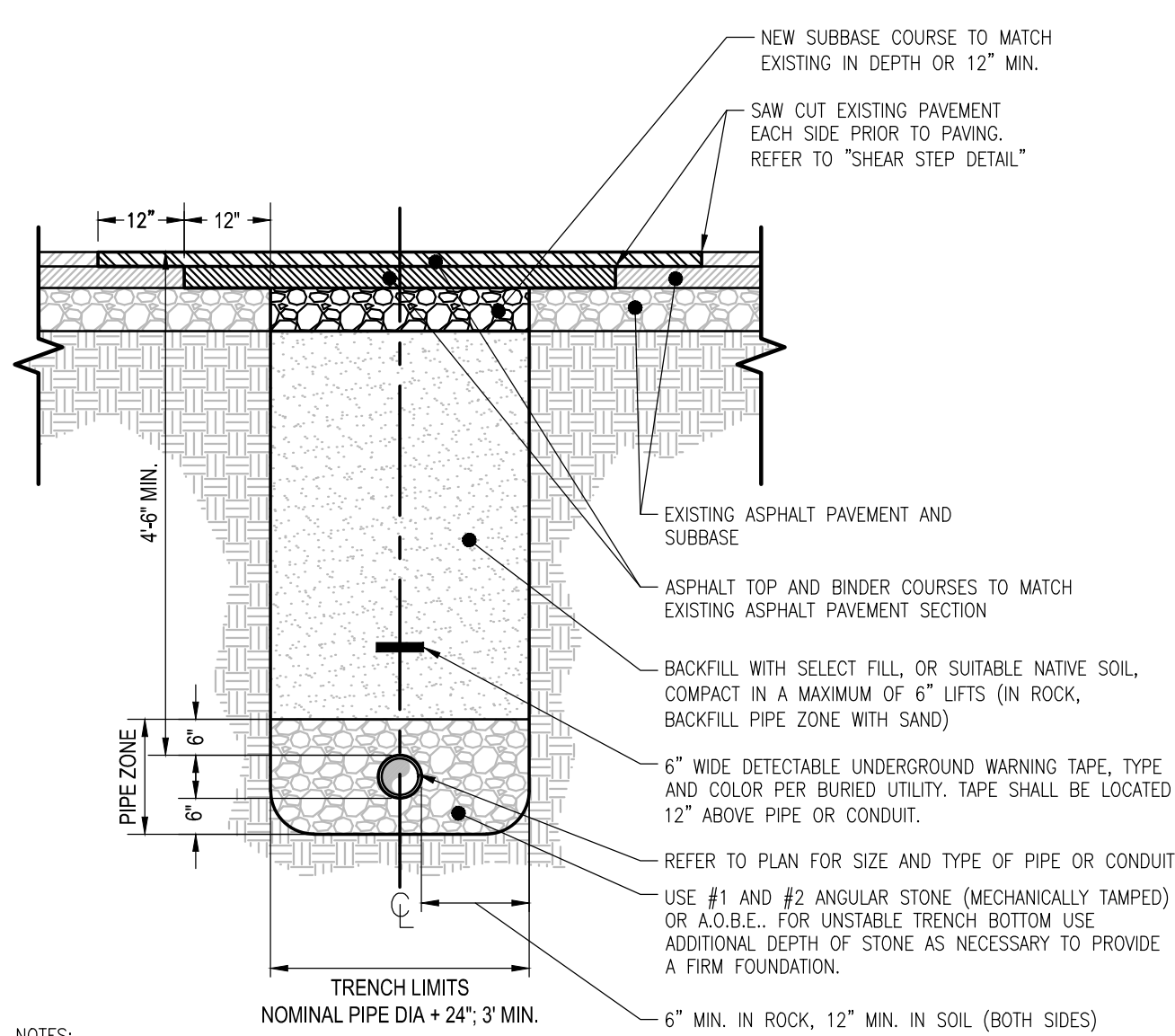
TRANSVERSE EXPANSION JOINT



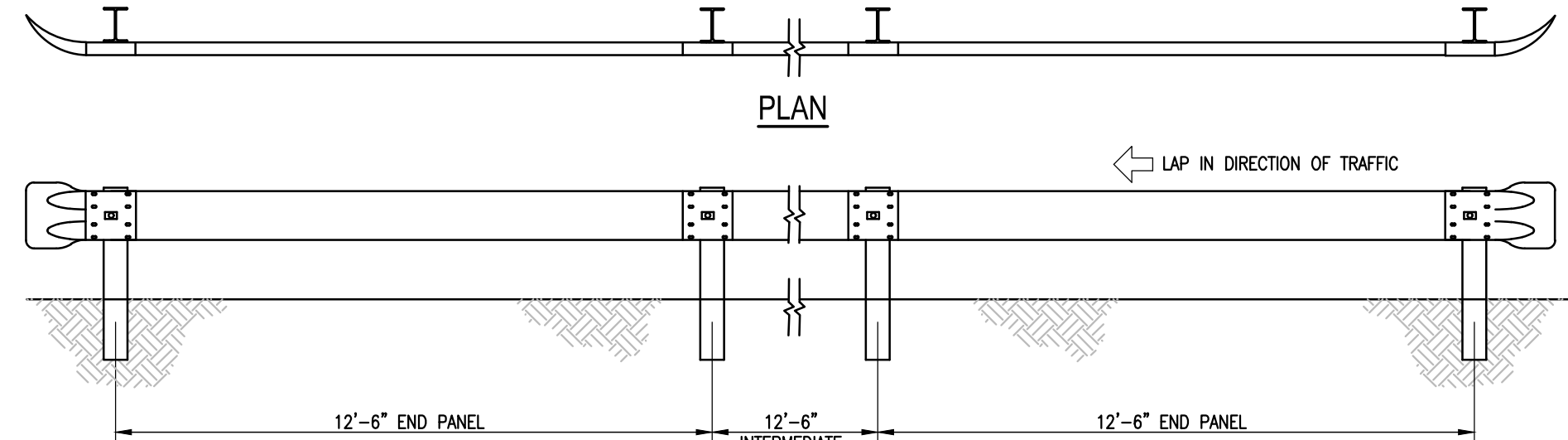
CONTRACTION JOINT



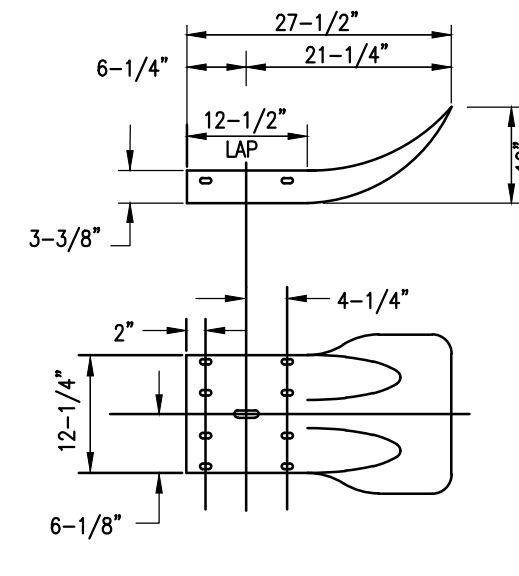
TRENCH & RESTORATION DETAIL (LANDSCAPE AREAS)
N.T.S.



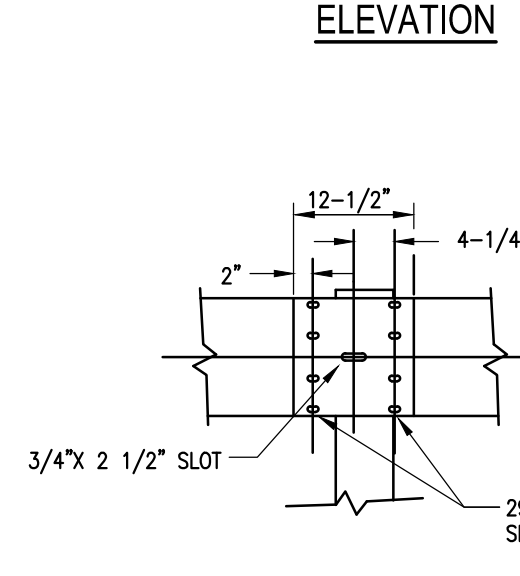
TRENCH & RESTORATION DETAIL (PAVED AREAS)
N.T.S.



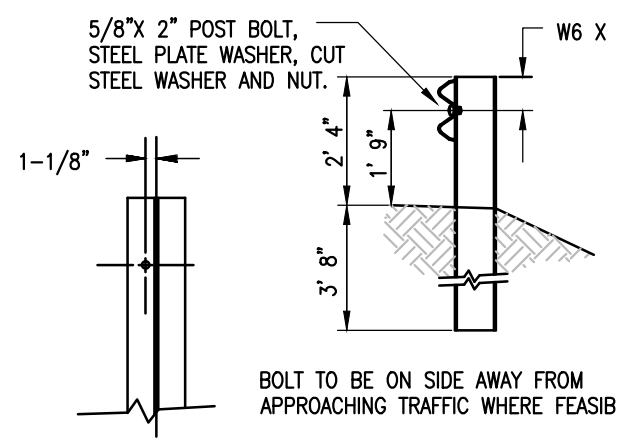
ELEVATION



TERMINAL SECTION

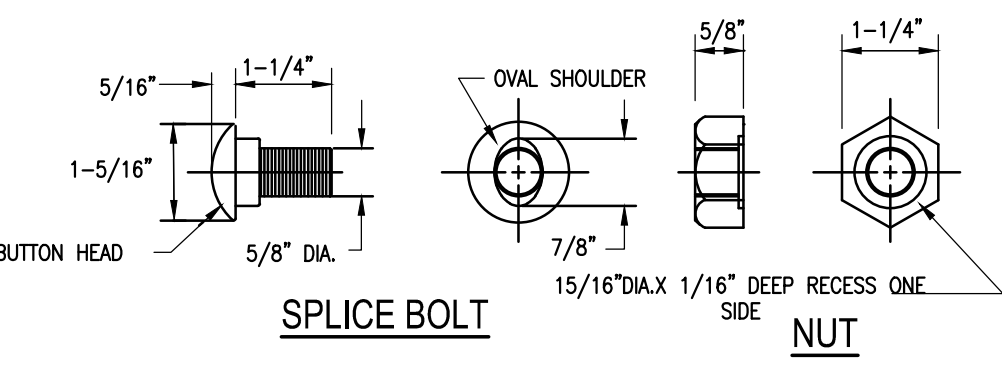


RAIL SPLICE



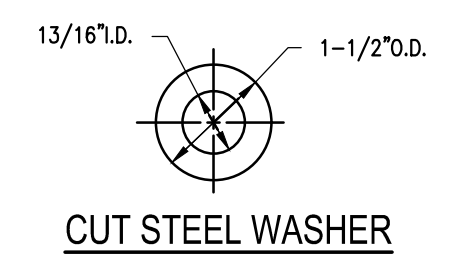
MOUNTING
HOLE

STEEL POST

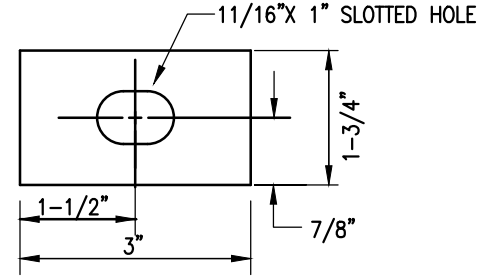


SPLICE BOLT

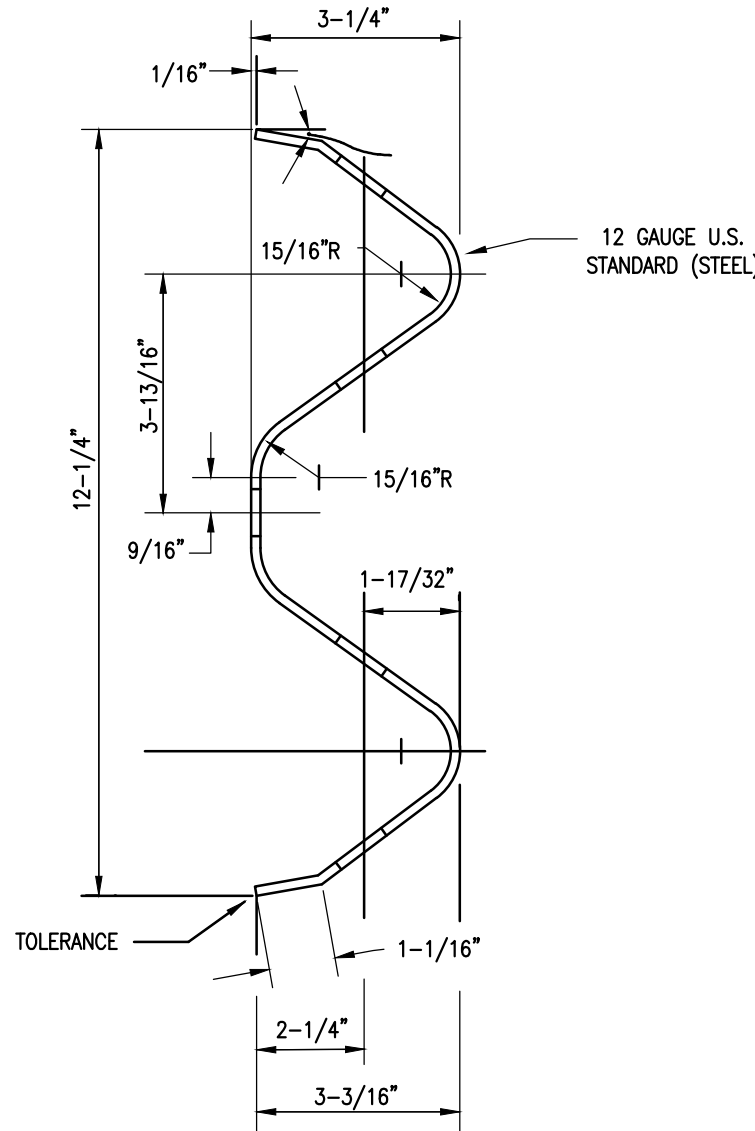
NUT



CUT STEEL WASHER



STEEL PLATE WASHER
FOR POST BOLT



GUIDE RAIL
N.T.S.

UTILITY PLANT ADDITION

5450 CAMPUS DRIVE
CANANDAIGUA, NY 14424

AKOUSTIS TECHNOLOGIES

5450 CAMPUS DRIVE
CANANDAIGUA, NY 14424

BERGMANN ARCHITECTS ENGINEERS PLANNERS

Bergmann Associates, Architects, Engineers,
Landscape Architects & Surveyors, D.P.C.
280 East Broad Street
Suite 200
Rochester, NY 14604

office: 585.232.5135
fax: 585.232.4652

www.bergmannpc.com

DATE	DESCRIPTION
3/26/2020	ADDENDUM #1



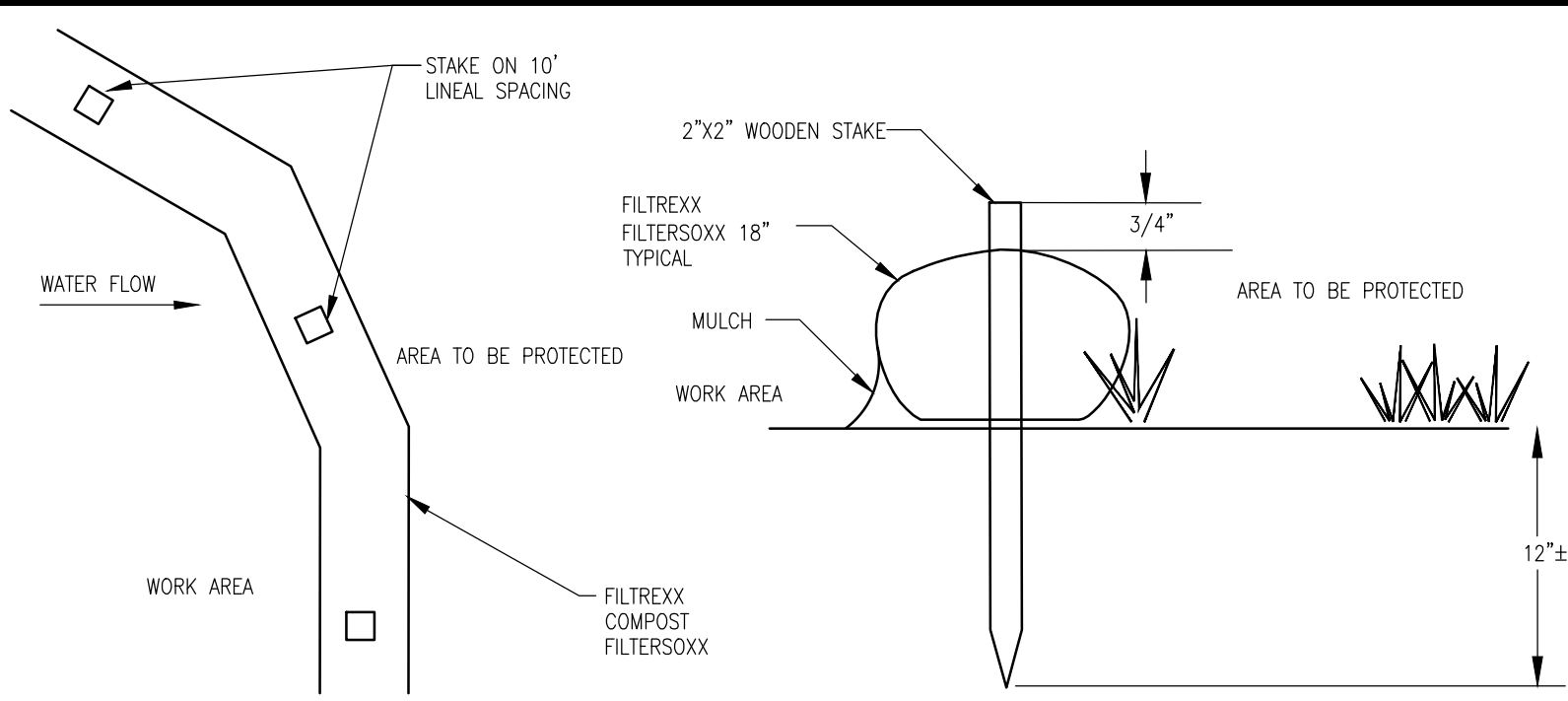
Copyright © Bergmann Associates, Architects, Engineers,
Landscape Architects & Surveyors, D.P.C

Project Manager: K. CURRAN, PE	Checked By: R. DARLING, PE
Designed By: P. HOLSBERGER, EIT	Drawn By: P. HOLSBERGER, EIT
Date Issued: 3/19/2020	Project Number: 14208.01

SITE & UTILITY DETAILS

C500

ANSI D 22x34
I:\Akoustis Inc\014208.01 Akoustis - Utility Plant Addition\4.0 Dwgs\4.1 Civil\Sheets\1420801 C501.dwg
3/27/2020 5:45 PM



FILTER SOCK PLAN VIEW

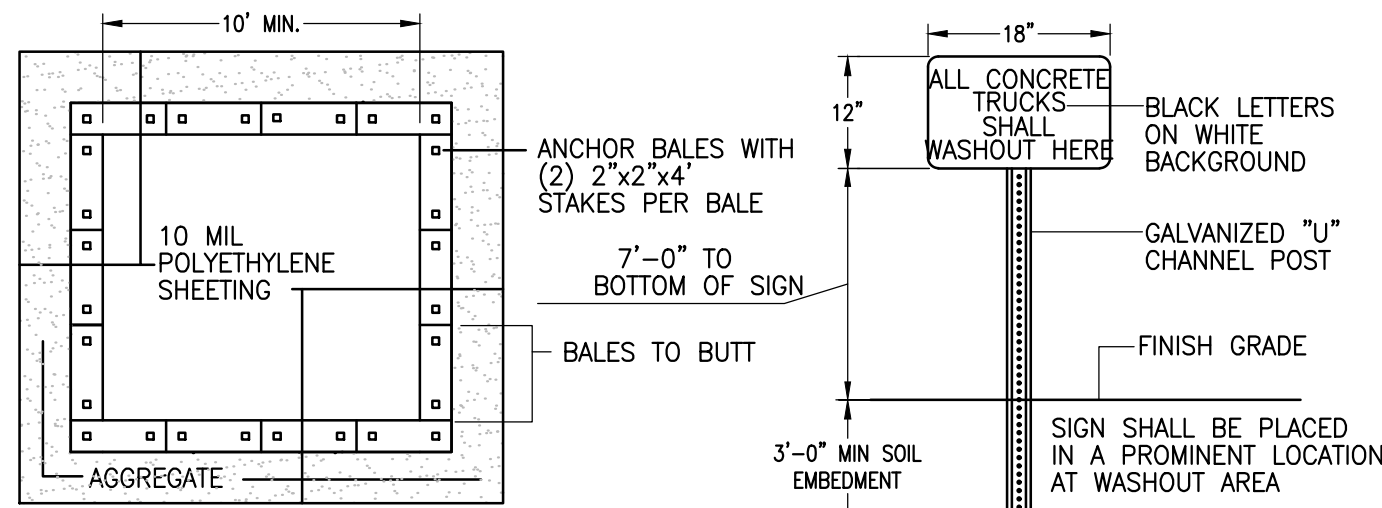
FILTER SOCK SECTION

- NOTES:
1. FILTER SOCK TO BE FILTREXX FILTERSOXX OR APPROVED EQUAL.
 2. ALL MATERIAL TO MEET FILTREXX SPECIFICATIONS
 3. FILTERSOXX COMPOST/ISOL/ROCK/SEED FILL TO MEET APPLICATION REQUIREMENTS
 4. FILTERSOXX DEPICTED IS FOR MINIMUM SLOPES. GREATER SLOPES MAY REQUIRE LARGER SOCKS PER ENGINEER
 5. COMPOST MATERIAL TO BE DISPERSED ON SITE, AS DETERMINED BY ENGINEER.

- MAINTENANCE NOTES:
1. THE CONTRACTOR SHALL MAINTAIN THE FILTERSOXX IN A FUNCTIONAL CONDITION AT ALL TIMES AND IT SHALL BE ROUTINELY INSPECTED.
 2. IF THE FILTERSOXX HAS BEEN DAMAGED, IT SHALL BE REPAIRED, OR REPLACED IF BEYOND REPAIR.
 3. THE CONTRACTOR SHALL REMOVE SEDIMENT AT THE BASE OF THE UPSLOPE SIDE OF THE FILTERSOXX WHEN ACCUMULATION HAS REACHED 1/2 OF THE EFFECTIVE HEIGHT OF THE FILTERSOXX. ALTERNATIVELY, A NEW FILTERSOXX CAN BE PLACED ON TOP OF AND SLIGHTLY BEHIND THE ORIGINAL ONE CREATING MORE SEDIMENT STORAGE CAPACITY WITHOUT SOIL DISTURBANCE.
 4. FILTERSOXX SHALL BE MAINTAINED UNTIL THE DISTURBED AREA ABOVE THE DEVICE HAS BEEN PERMANENTLY STABILIZED AND CONSTRUCTION ACTIVITY HAS CEASED. THE FILTER MEDIA WILL BE DISPERSED ON SITE ONCE THE DISTURBED AREA HAS BEEN PERMANENTLY STABILIZED
 5. FOR LONG-TERM SEDIMENT AND POLLUTION CONTROL APPLICATIONS, FILTERSOXX CAN BE SEEDD AT THE TIME OF INSTALLATION TO CREATE A VEGETATIVE FILTERING SYSTEM FOR PROLONGED AND INCREASED FILTRATION OF SEDIMENT AND SOLUBLE POLLUTANTS (CONTAINED VEGETATIVE FILTER STRIP). THE APPROPRIATE SEED MIX SHALL BE DETERMINED BY THE DESIGN PROFESSIONAL.

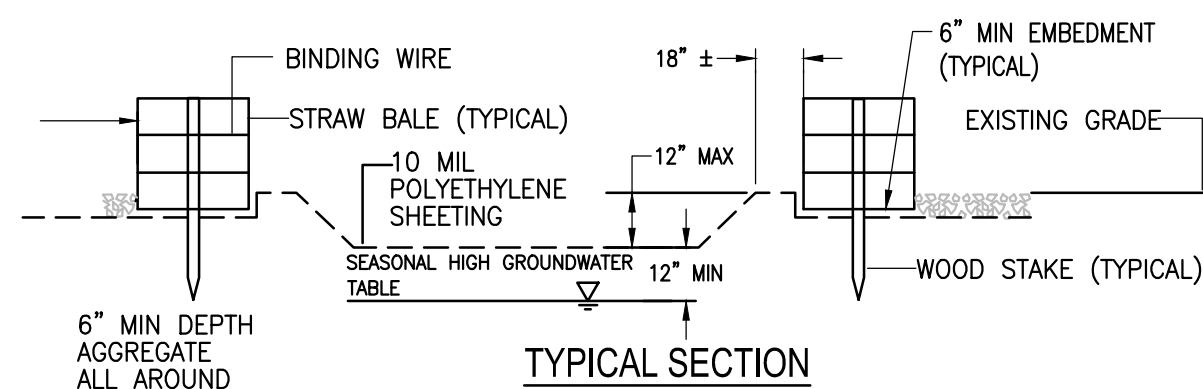
FILTER SOCK SEDIMENT CONTROL

N.T.S.



PLAN

WASHOUT SIGN

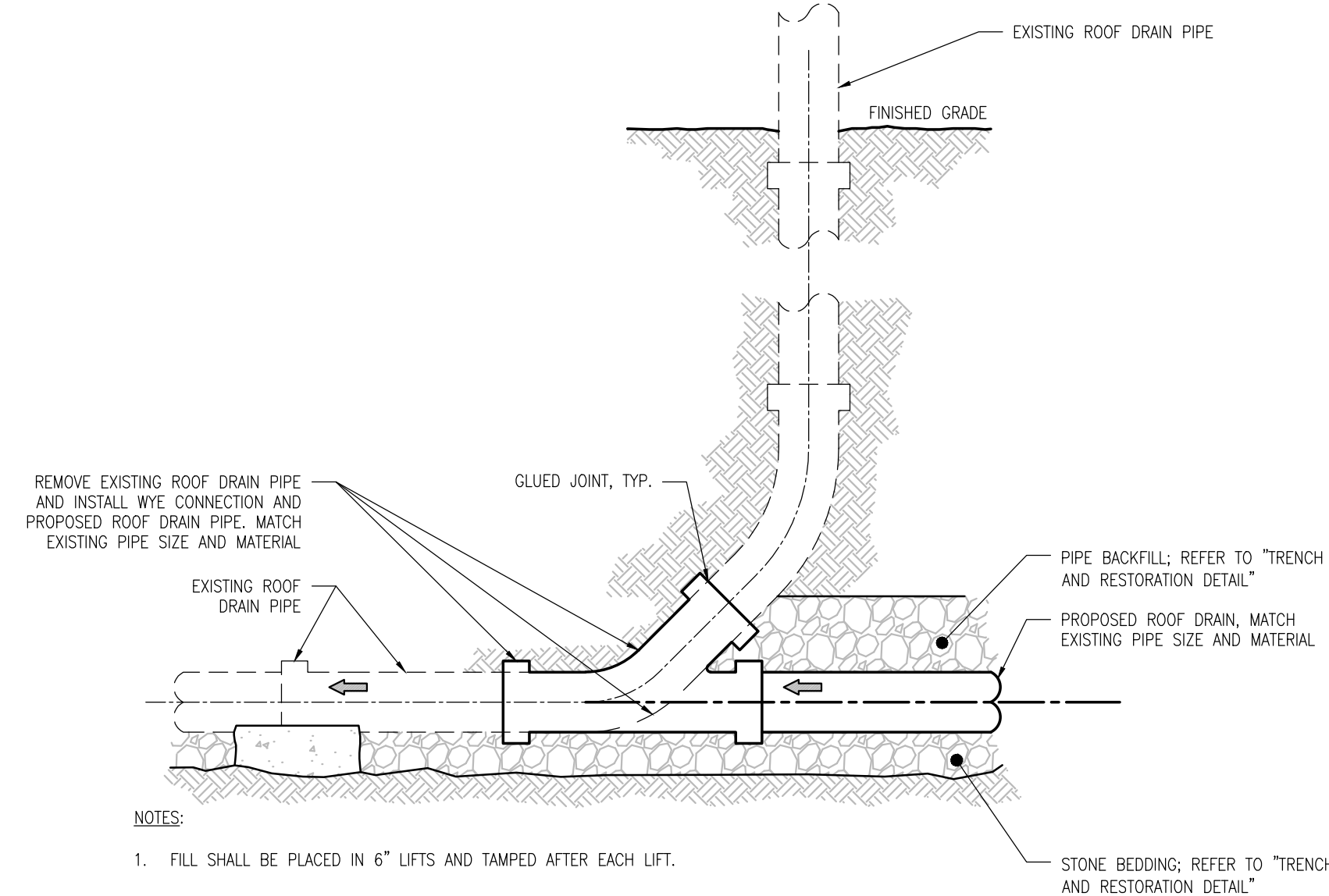


TYPICAL SECTION

1. CONTAINMENT MUST BE STRUCTURALLY SOUND AND LEAK FREE AND CONTAIN ALL LIQUID WASTES.
2. CONTAINMENT DEVICES MUST BE OF SUFFICIENT QUANTITY OR VOLUME TO COMPLETELY CONTAIN THE LIQUID WASTES GENERATED.
3. WASHOUT MUST BE CLEANED OR NEW FACILITIES CONSTRUCTED AND READY TO USE ONCE WASHOUT IS 75% FULL.
4. WASHOUT AREA(S) SHALL BE INSTALLED IN A LOCATION EASILY ACCESSIBLE BY CONCRETE TRUCKS.
5. ONE OR MORE AREAS MAY BE INSTALLED ON THE CONSTRUCTION SITE AND MAY BE RELOCATED AS CONSTRUCTION PROGRESSES.
6. AT LEAST WEEKLY REMOVE ACCUMULATION OF SAND AND AGGREGATE AND DISPOSE OF PROPERLY.

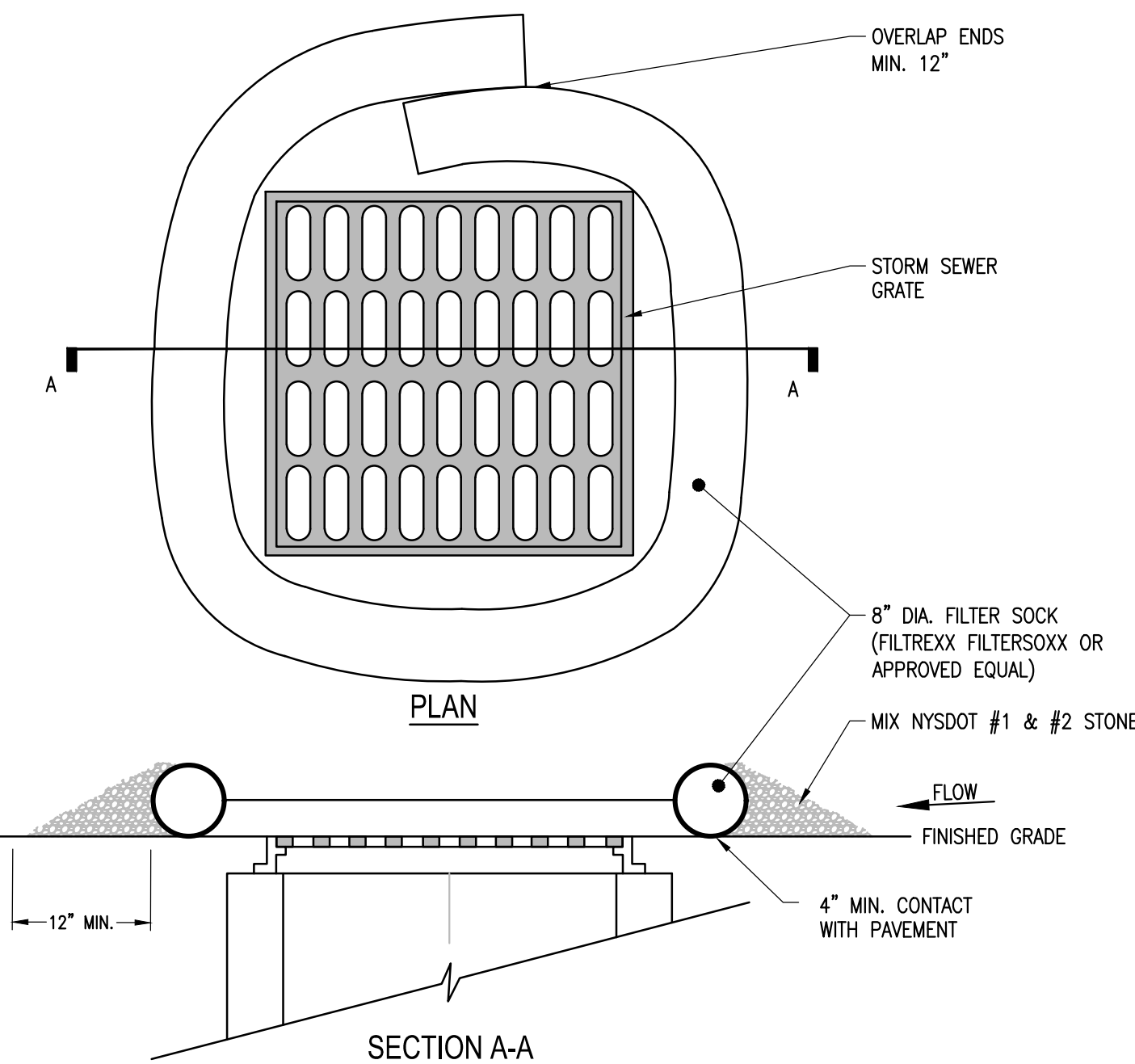
CONCRETE WASHOUT AREA

N.T.S.



STORM SEWER ROOF-DRAIN CONNECTION DETAIL

N.T.S.

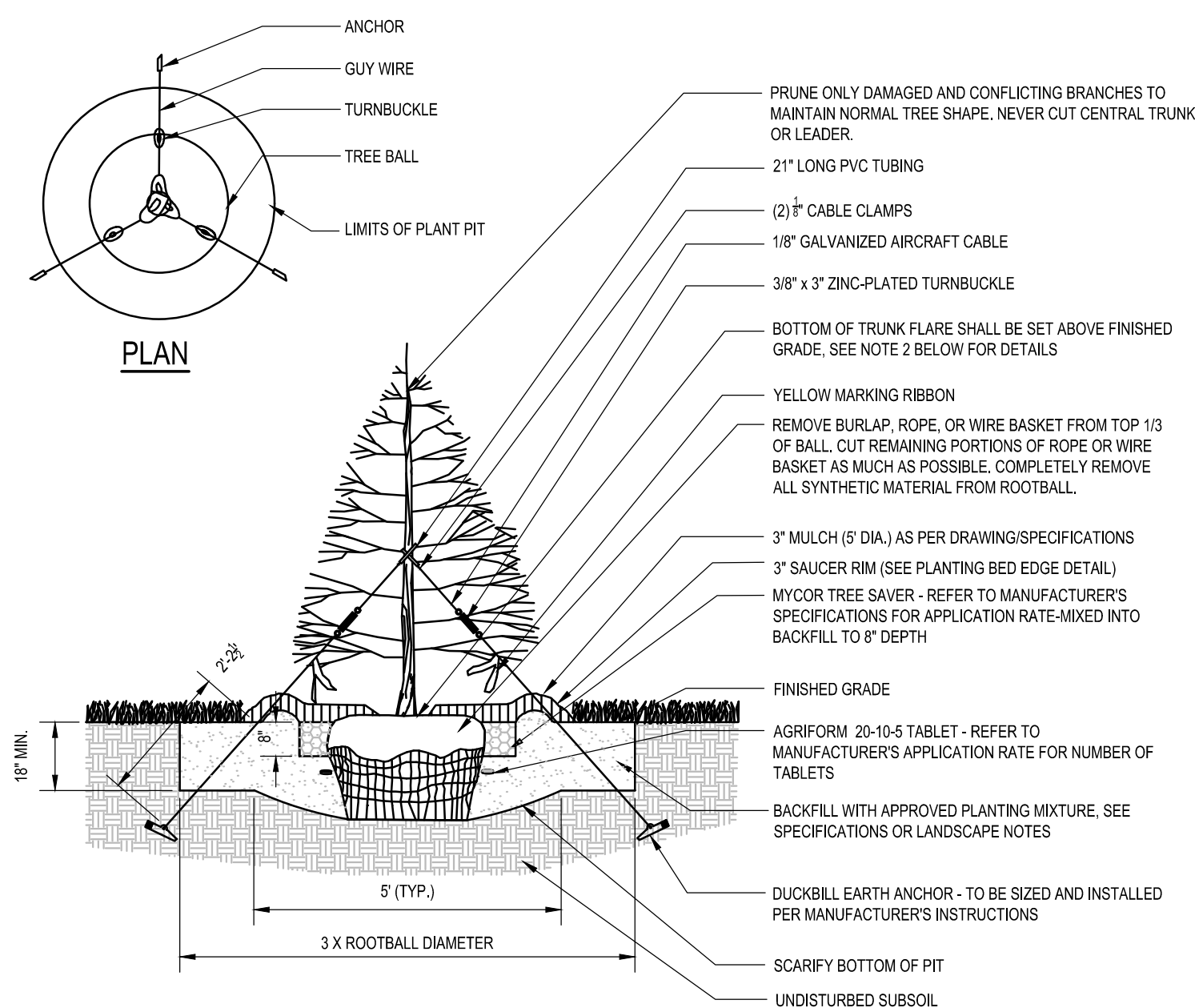


SECTION A-A

- NOTES:
1. REPLACE AND DISPOSE OF PER MANUFACTURERS SPECIFICATIONS.
 2. THIS PRACTICE INCLUDES SANDBAGS, COMPOST FILTER SOCKS, GEO-TUBES FILLED WITH BALLAST, AND MANUFACTURED SURFACE BARRIERS. PEA GRAVEL CAN ALSO BE USED IN CONJUNCTION WITH THESE PRACTICES TO IMPROVE PERFORMANCE. WHEN INLET IS NOT AT A LOW POINT, AND IS OFF-SET FROM THE PAVEMENT OR GUTTER LINE, PROTECTION SHOULD BE SELECTED AND INSTALLED SO THAT FLOWS ARE NOT DIVERTED AROUND INLET.
 3. THE DRAINAGE AREA SHOULD BE LIMITED TO 1 ACRE AT THE DRAINAGE INLET. ALL PRACTICES WILL BE PLACED AT THE INLET PERIMETER OR BEYOND TO MAXIMIZE THE FLOW CAPACITY OF THE INLET. PRACTICES SHALL BE WEIGHTED, BRACED, TIED, OR OTHERWISE ANCHORED TO PREVENT MOVEMENT OR SHIFTING OF LOCATION ON PAVED SURFACES. TRAFFIC SAFETY SHALL BE INTEGRATED WITH THE USE OF THIS PRACTICE. ALL PRACTICES SHOULD BE MARKED WITH TRAFFIC SAFETY CONES AS APPROPRIATE. STRUCTURE HEIGHT SHALL NOT CAUSE FLOODING OR BY-PASS FLOW THAT WOULD CAUSE ADDITIONAL EROSION. THE STRUCTURE SHOULD BE INSPECTED AFTER EVERY STORM EVENT. ANY SEDIMENT SHOULD BE REMOVED AND DISPOSED OF ON THE SITE. ANY BROKEN O DAMAGED COMPONENTS SHOULD BE REPLACED. CHECK ALL MATERIALS FOR PROPER ANCHORING AND SECURE AS NECESSARY.
 4. IF USING THE COMPOST FILTER SOCK, THE COMPOST INFILL SHALL BE WELL DECOMPOSED (MATURED AT LEAST 3 MONTHS), WEED-FREE, ORGANIC MATTER. IT SHALL BE AEROBICALLY COMPOSTED, POSSESS NO OBJECTIONABLE ODORS, AND CONTAIN LESS THAN 1% BY DRY WEIGHT, OF MANMADE FOREIGN MATTER. WHEN USING COMPOST FILTER SOCKS ADJACENT TO SURFACE WATER, THE COMPOST SHOULD HAVE LOW NUTRIENT VALUE.

PAVED SURFACE INLET PROTECTION DETAIL

N.T.S.

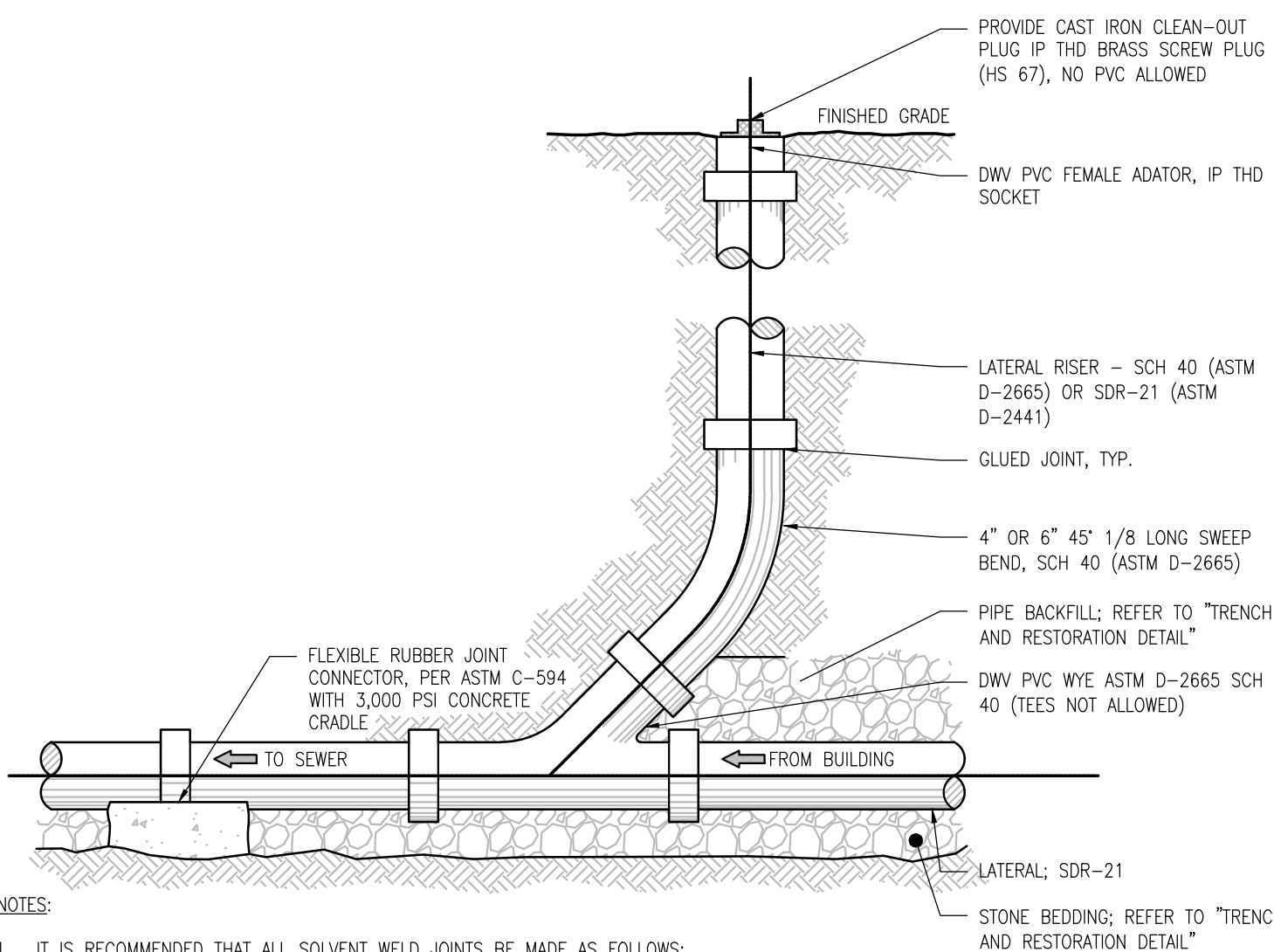


NOTES:

1. MAINTAIN A 2' MINIMUM RADIUS CLEAR OF MULCH AROUND THE TRUNK.
2. THE DISTANCE BETWEEN THE BOTTOM OF THE TRUNK FLARE AND THE FINISHED GRADE SHALL BE AS FOLLOWS:
 - FOR SANDY OR LOAMY SOILS: 1"
 - FOR CLAY OR POORLY DRAINED SOILS: 3"THE CONTRACTOR SHALL REVIEW THE APPROPRIATE PLANTING DEPTH WITH THE OWNERS REPRESENTATIVE PRIOR TO INSTALLATION.
3. WHEN TAGGING TREES AT THE NURSERY, MARK THE NORTH SIDE OF THE TREE IN THE FIELD AND WHEN INSTALLING, ROTATE TREE TO FACE NORTH WHENEVER POSSIBLE.

EVERGREEN TREE PLANTING

N.T.S.



SANITARY SEWER LATERAL CLEAN-OUT

N.T.S.

- NOTES:
1. IT IS RECOMMENDED THAT ALL SOLVENT WELD JOINTS BE MADE AS FOLLOWS:
 - CLEAN DRY HUBS AND SPOTS
 - PRIMER APPLIED TO PARTS BEING CONNECTED
 - PVC SOLVENT WELD CEMENT APPLIED DIRECTLY OVER PRIMER
 - PVC TYPE 1 IS COMPATIBLE FOR SOLVENT WELDING TO SDR-21 OR ANY OTHER PVC TYPE 1 PIPE MADE TO "STEEL PIPE" OUTSIDE DIMENSIONS
 2. FILL SHALL BE PLACED IN 6" LIFTS AND TAMPED AFTER EACH LIFT.

UTILITY PLANT ADDITION

5450 CAMPUS DRIVE
CANANDAIGUA, NY 14424

AKOUSTIS TECHNOLOGIES

5450 CAMPUS DRIVE
CANANDAIGUA, NY 14424



Bergmann Associates, Architects, Engineers,
Landscape Architects & Surveyors, D.P.C.
280 East Broad Street
Suite 200
Rochester, NY 14604

office: 585.232.5135
fax: 585.232.4652

www.bergmannpc.com

DATE	DESCRIPTION
3/26/2020	ADDENDUM #1



Copyright © Bergmann Associates, Architects, Engineers,
Landscape Architects & Surveyors, D.P.C

Project Manager: K. CURRAN, PE	Checked By: R. DARLING, PE
Designed By: P. HOLSBERGER, EIT	Drawn By: P. HOLSBERGER, EIT
Date Issued: 3/19/2020	Project Number: 14208.01

UTILITY & EROSION AND SEDIMENT CONTROL DETAILS

Drawing Number:

C501