



PROPOSED HIGHWAY FACILITY Informational Meeting

Presented by:
Public Works Committee

Introduction

- January, 2015: Public Works Committee is formed.
- Task: develop a plan to meet the facility needs for all Town departments for the next 25 years, considering 25 – 30% projected population growth.
- Conducted written survey and met with all Department Heads to discuss current and future needs.
- Committee identified the need for facility improvements in:
 - Town Hall / Courtroom
 - Highway / Water Facility
 - Transfer Station
- Presented findings to the Town Board. Decision made to contract with MRB Group to complete Site Feasibility and Concept Study.

Study Findings

- Courtroom needs updating to comply with NYS requirements and local security concerns.
- Town Hall will need upgrades and expansion to accommodate expected population growth.
- Major deficiencies at Transfer Station in traffic flow, safety, efficiency, concrete pad, electronics collection building, employee shelter, and location.
- Major deficiencies at Highway/Water Facility in safety, roofing, lighting, ventilation, space for operations, and storage space.

Study Proposal

- Town Hall: complete various modifications and possible addition
- Courtroom: build new stand-alone building, addition to existing Town Hall, or seek joint facility with other communities
- Transfer Station: develop new Transfer Station on property east of Town Hall
- Highway / Water Facility: build a new highway garage and modify other facility building
- Estimated cost for Transfer Station & Highway/Water Facility Upgrades: \$ 9 million

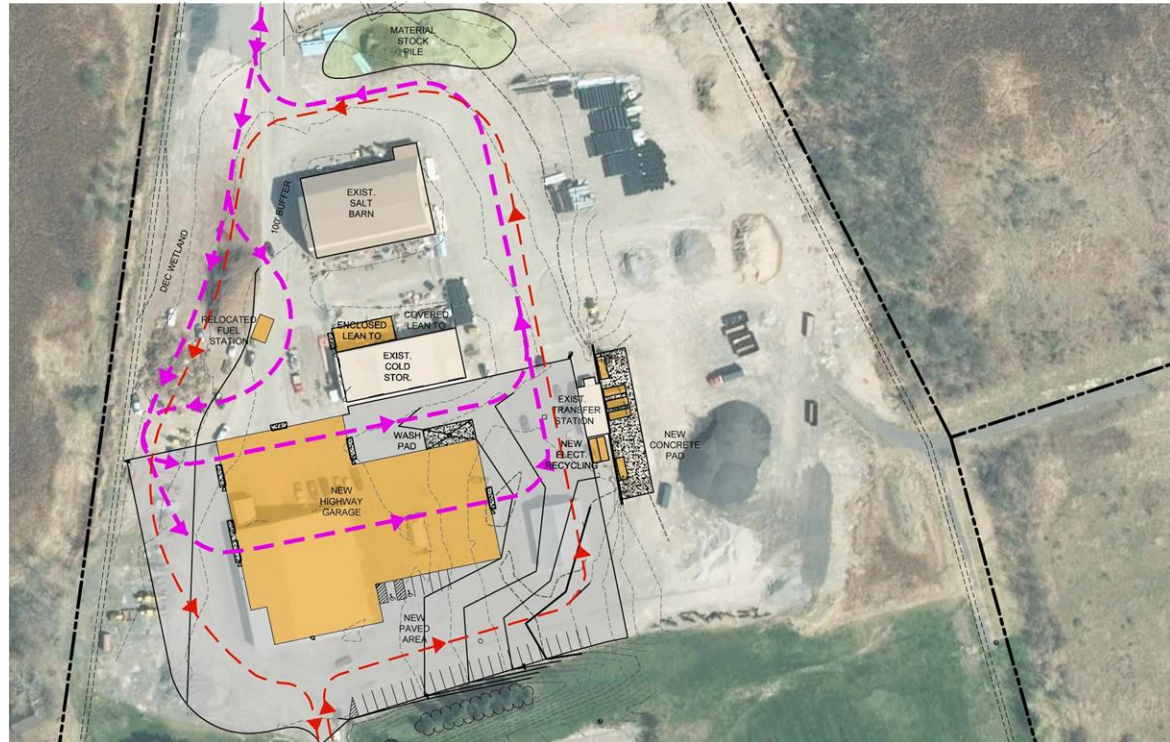
Revised Study Proposal

- Town Board and Public Works Committee discuss options for cost reduction.
 - Highway / Water Facility is highest priority because of safety concerns, focus on building new Highway Garage and modifying other facilities
 - Leave Transfer Station in current location; based primarily upon public input
 - Explore joint court with other communities
 - Town Hall renovation requires Courtroom decision; put on hold
- Revised Study Proposal, estimated cost: \$ 7 million
- Town Board requests one more revision to scale back costs while still meeting most critical needs.
- Final revision, estimated cost: \$ 5.9 million
- Town Board approves study, MRB Group asked to move forward and develop Schematic Design.

Schematic Design

- Build a new 41,000 s.f. Highway Garage Building
- Improvements to the existing Transfer Station
- Addition/Renovation to the existing Cold Storage Building to house the Water & Parks Departments
- Estimated cost: \$5.9 million

Schematic Design



AUGUST 15, 2016



New Highway Garage & Transfer Station

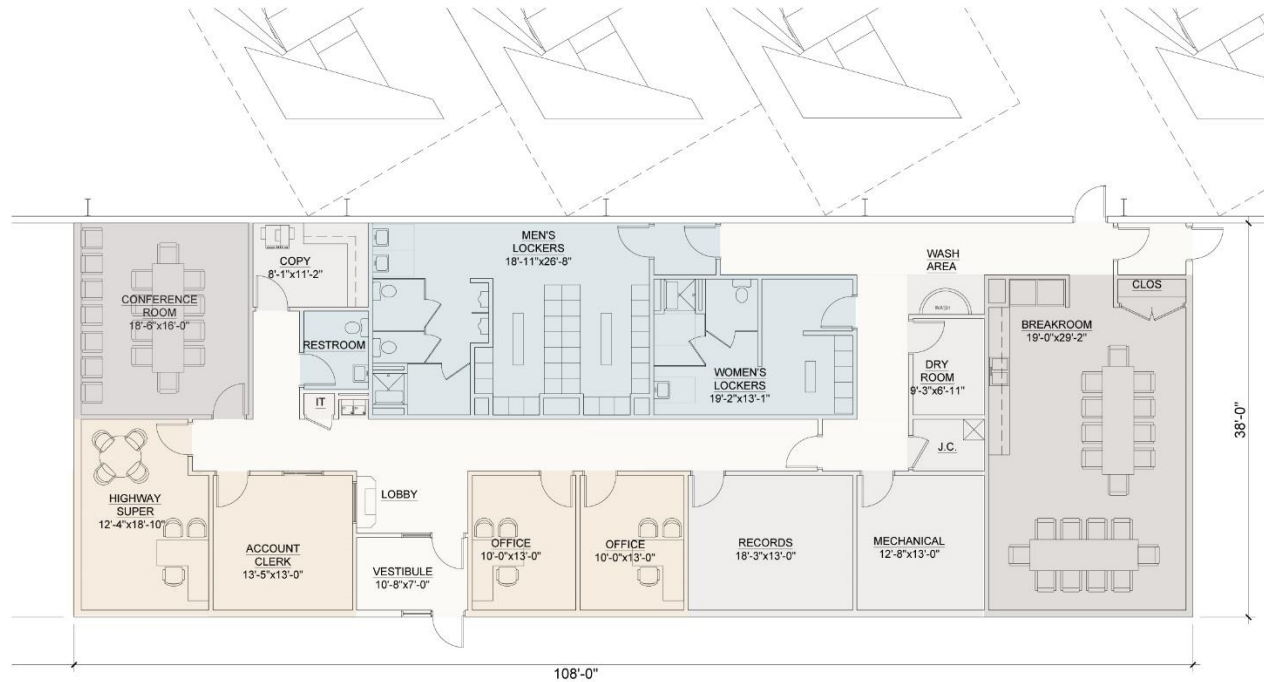
MRB | group
Engineering, Architecture, Surveying, P.C.

Site Plan

Schematic Design



Schematic Design



MARCH 21, 2016

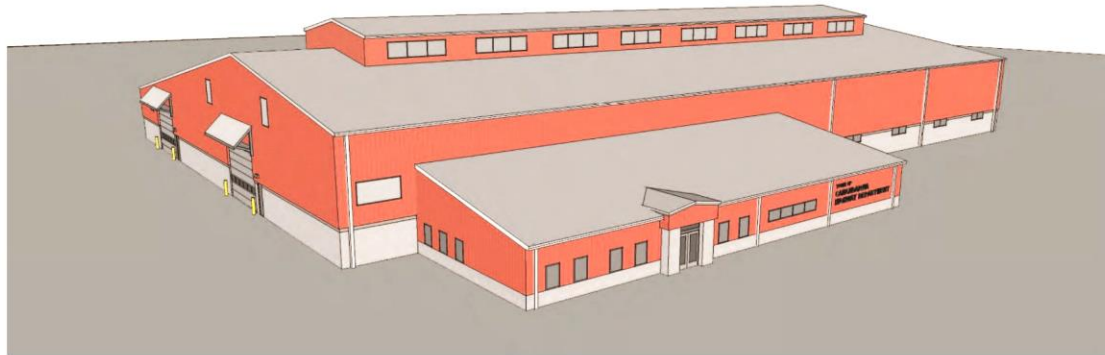


Enlarged Office Plan

MRB | group
Engineering, Architecture, Surveying, P.C.

Office Floor Plan

Schematic Design



AUGUST 15, 2016



CANANDAIGUA HIGHWAY GARAGE
EXTERIOR ELEVATIONS

MRB | *group*
Engineering. Architecture. Surveying. P.C.

Exterior Renderings

Schematic Design



AUGUST 15, 2016

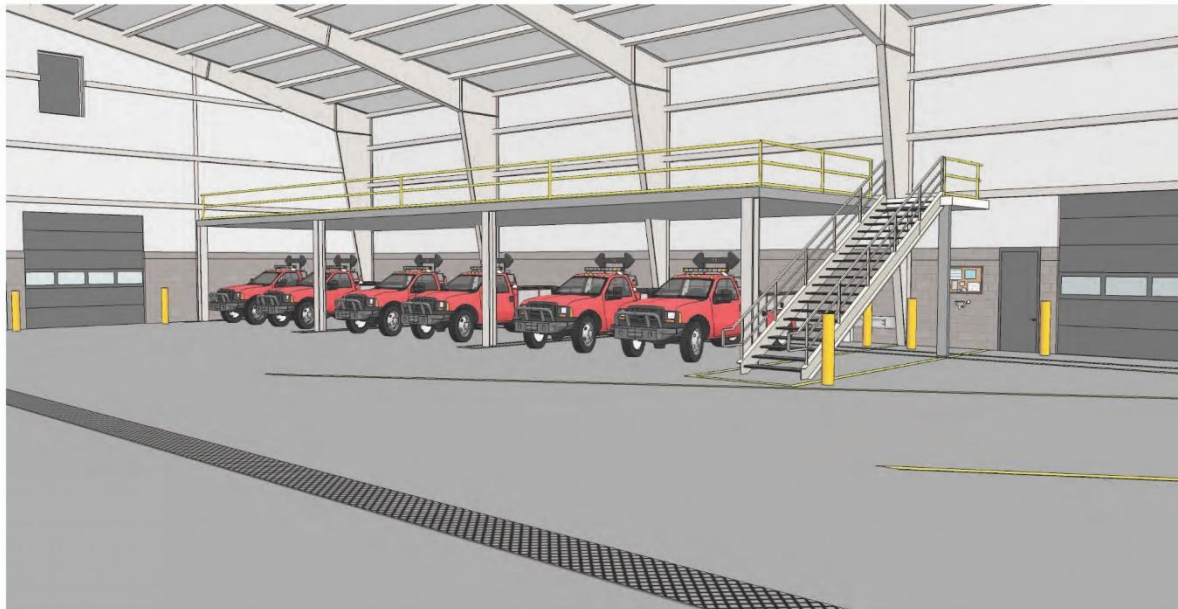


CANANDAIGUA HIGHWAY GARAGE
INTERIOR RENDERINGS

MRB | *group*
Engineering, Architecture, Surveying, P.C.

Interior Rendering

Schematic Design



AUGUST 15, 2016



CANANDAIGUA HIGHWAY GARAGE
INTERIOR RENDERINGS

MRB | group
Engineering, Architecture, Surveying, P.C.

Interior Rendering

Why build a new facility?

- To provide a safe work space for employees with proper lighting and clean air.
- To create separate, safe spaces for vehicle maintenance, welding, and carpentry operations.
- To provide inside storage for heavy equipment, materials, and supplies.
- The current facility is not suitable for renovation.
 - Garage built in 1971
 - Cold Storage built in 1978

Why build a new facility?

- To improve the energy efficiency of the facility.
- To improve the security of the facility.
- To improve the quality of life for Town Employees.
- To include the Parks & Water departments and consolidate their equipment into one location.
- To ensure readiness in an emergency.
- To prepare now for future needs.

How much will it cost me?

Estimated cost: \$ 5,900,000

Estimated increase:

\$ 0.25 – 0.31/thousand

A home with assessed value of \$ 250,000
could see an increase of
\$ 62.50 to \$ 77.50

Next Steps

- Consider comments from Public Meetings.
- Incorporate agreed upon changes into proposal.
- Town Board to review resident input and make decision to proceed.
- Town Board to decide:
 - Permissive Referendum
 - Voter Referendum

Questions?



Contact Information:

Jim Fletcher, Highway Superintendent/Committee Member - 394.3300

Terry Fennelly, Councilman/Committee Member - 394.0625

Al Kraus, Committee Member - 396.0242