



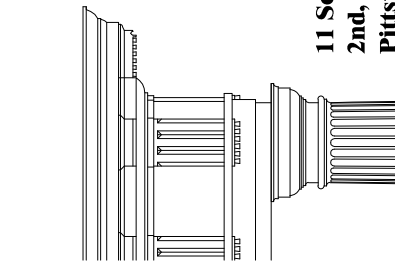
**BUILDINGS 19,20&21  
ONE BEDROOM  
RIGHT SIDE ELEVATION**

1/4"=1'-0"



**BUILDINGS 19,20&21  
BEDROOM  
LEFT SIDE ELEVATION**

1/4"=1'-0"



**GLASOW  
ARCHITECTURE**

11 Schoen Place  
2nd Floor, Suites 2  
Pittsford, NY 14534  
phone: (585) 246.4149  
phone: (585) 246.4195  
www.glasowarchitecture.com

## CreekView Apartments at Woodland Park Phase II

CANANDAIGUA, NEW YORK

*The DiMarco Group*  
on behalf of

*CreekView  
Apartments, LLC*

1950 BRIGHTON HENRIETTA TOWNLINE ROAD  
ROCHESTER, NEW YORK 14623  
SUITE 200  
(585) 292-0480  
FAX: (585) 292-1464

Copyright 2019 by Daniel P. Glasow, Architect. Copy No. 1. This drawing is the property of Daniel P. Glasow, Architect. It is to be used only for the project and site specified herein. It is not to be reproduced, stored in a retrieval system, or by any information storage or retrieval system, without permission in writing by Daniel P. Glasow, Architect.

Drawing Alteration:  
This drawing is to be altered only by the original author or by a licensed architect or engineer under the direct supervision of a licensed architect or a licensed professional engineer to alter an item in any way. If an item bearing the seal of an architect or engineer is altered, the alteration shall be indicated by a line and the word "ALTERED BY" followed by his signature and date of such alteration and a specific description of the alteration.

JOB NO.	CANANDAIGUA II
FILE	1brelv
SCALE	1/4"=1'-0"
DRAWN	JWM
CHECKED	DPG
DATE	12/06/19
PLOT	12/06/19
REVISIONS	

SHEET TITLE:

**A-A4**

DRAWING NUMBER



**BUILDINGS 19,20&21**  
**ONE BEDROOM**  
**FRONT ELEVATION**

1/4"=1'-0"

**The DiMarco Group**  
on behalf of  
**CreekView**  
**Apartments, LLC**  
1950 BRIGHTON HENRIETTA TOWNLINE ROAD  
ROCHESTER, NEW YORK 14623  
(585) 292-0480  
FAX: (585) 292-1464

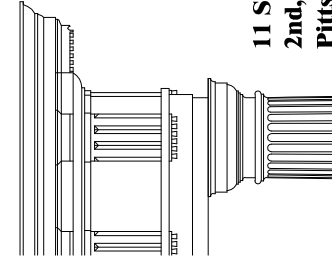
Copyright 2019 by Daniel P. Glasow, Architect. Copy No. 1. This drawing is the property of Daniel P. Glasow, Architect. It is to be used only for the project and site specified herein. It is not to be reproduced, stored in a retrieval system, or by any information storage or retrieval system, without permission in writing by Daniel P. Glasow, Architect.  
Drawing Alteration:  
This drawing is to be used in accordance with the New York State Education Law, Article 145, Section 2209 and applies to the following:  
It is a violation of this law for any person, unless he is acting under the direct supervision of a licensed architect or a licensed professional engineer to alter an item in any way. If an item bearing the seal of an architect or engineer is altered, the alteration shall be marked with the words "ALTERED BY:" followed by his signature and date of such alteration and a specific description of the alteration.

JOB NO.  
FILE  
SCALE  
DRAWN  
CHECKED  
DATE  
PLOT  
REVISIONS

SHEET TITLE:

**A-A5**

DRAWING NUMBER



**GLASOW**  
**ARCHITECTURE**

11 Schoen Place  
2nd Floor, Suites 2  
Pittsford, NY 14534  
phone: (585) 246.4149  
phone: (585) 246.4195  
www.glasowarchitecture.com

**CreekView Apartments**  
**at Woodland Park**  
**Phase II**  
CANANDAIGUA, NEW YORK



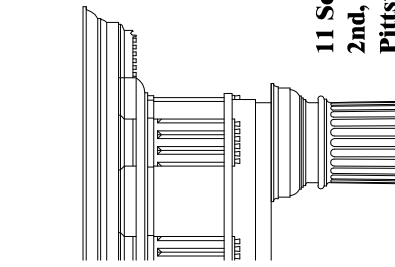
**TWO BEDROOM  
RIGHT SIDE ELEVATION**

1/4"=1'-0"



**TWO BEDROOM  
LEFT SIDE ELEVATION**

1/4"=1'-0"



**GLASOW  
ARCHITECTURE**

11 Schoen Place  
2nd Floor, Suites 2  
Pittsford, NY 14534  
phone: (585) 246.4149  
phone: (585) 246.4195  
www.glasowarchitecture.com

## CreekView Apartments at Woodland Park Phase II

CANANDAIGUA, NEW YORK

*The DiMarco Group*  
on behalf of

*CreekView  
Apartments, LLC*

1950 BRIGHTON HENRIETTA TOWNLINE ROAD  
ROCHESTER, NEW YORK 14623  
SUITE 200  
(585) 292-0480  
FAX: (585) 292-1464

Copyright 2019 by Daniel P. Glasow, Architect. Copy No. 1. This drawing is the property of Glasow Architecture and may not be reproduced, stored in a retrieval system, or by any information storage or retrieval system, without permission in writing by Daniel P. Glasow, Architect.

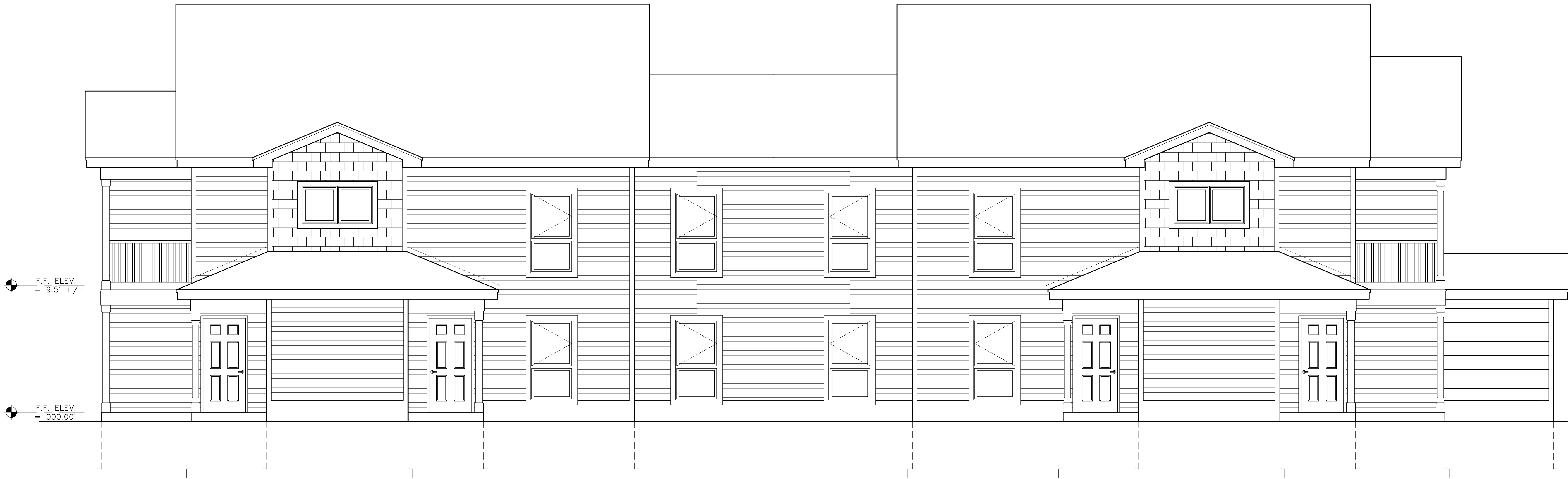
Drawing Alteration:  
This drawing is a revision of the original drawing. It is a violation of the law for any person, other than a professional engineer, to alter an item in any way. If an item bearing the seal of an architect or engineer is altered, the alteration shall be indicated by the words "ALTERED BY:" followed by his signature and date of such alteration and a specific description of the alteration.

JOB NO.	CANANDAIGUA II
FILE	2brtlv
SCALE	1/4"=1'-0"
DRAWN	JWM
CHECKED	DPG
DATE	12/06/19
PLOT	12/06/19
REVISIONS	

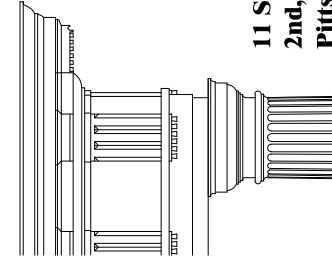
SHEET TITLE:

**A-B4**

DRAWING NUMBER



**TWO BEDROOM  
FRONT ELEVATION**  
1/4"=1'-0"



**GLASOW  
ARCHITECTURE**

11 Schoen Place  
2nd Floor, Suites 2  
Pittsford, NY 14534  
phone: (585) 246.4149  
phone: (585) 246.4195  
www.glasowarchitecture.com

## CreekView Apartments at Woodland Park Phase II

CANANDAIGUA, NEW YORK

**The DiMarco Group**  
on behalf of

*CreekView*

**Apartments, LLC**

1950 BRIGHTON HENRIETTA TOWNLINE ROAD  
SUITE 200  
ROCHESTER, NEW YORK 14623  
(585) 292-0480  
FAX: (585) 292-1464

Copyright 2019 by Daniel P. Glasow, Architect. Copy No. 1. This drawing is the property of Daniel P. Glasow, Architect. It is to be used only for the project and site specified herein. It is not to be reproduced, stored in a retrieval system, or by any information storage or retrieval system, without permission in writing by Daniel P. Glasow, Architect.

Drawing Alteration:  
This drawing is a revision of the original drawing. It is a revision of the original drawing. It is a revision of the original drawing.

It is a violation of the law for any person, other than a licensed professional engineer, to alter an item in any way. If an item bearing the seal of an architect or engineer is altered, the alteration shall be marked with the words "ALTERED BY" followed by the signature and date of such alteration and a specific description of the alteration.

JOB NO.	CANANDAIGUA II
FILE	2brelv
SCALE	1/4"=1'-0"
DRAWN	JWM
CHECKED	DPG
DATE	12/06/19
PLOT	12/06/19
REVISIONS	

SHEET TITLE:

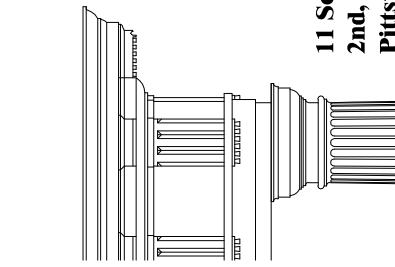
**A-B5**

DRAWING NUMBER



**THREE BEDROOM  
FRONT ELEVATION**

1/4"=1'-0"



**GLASOW  
ARCHITECTURE**

11 Schoen Place  
2nd Floor, Suites 2  
Pittsford, NY 14534  
phone: (585) 246.4149  
phone: (585) 246.4195  
www.glasowarchitecture.com

**CreekView Apartments  
at Woodland Park  
Phase II**

CANANDAIGUA, NEW YORK

**The DiMarco Group**  
on behalf of

**CreekView  
Apartments, LLC**

1950 BRIGHTON HENRIETTA TOWNLINE ROAD  
SUITE 200  
ROCHESTER, NEW YORK 14623  
(585) 292-0480  
FAX: (585) 292-1464

Copyright 2019 by Daniel P. Glasow, Architect. Copy No. 1. This drawing is the property of Glasow Architecture and may be reproduced, stored in a retrieval system, or by any information storage or retrieval system, without permission in writing by Daniel P. Glasow, Architect.

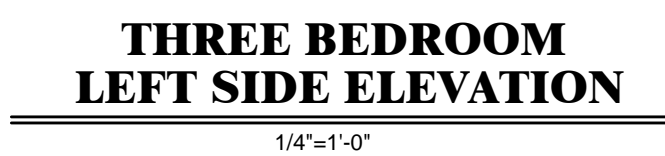
Drawing Alteration:  
This drawing is a revision of the original drawing. It is a violation of the law for any person, other than a licensed professional engineer to alter an item in any way. If an item bearing the seal of an architect or engineer is altered, the alteration shall be indicated by a line and the word "ALTERED BY" followed by his signature and date of such alteration and a specific description of the alteration.

JOB NO.	CANANDAIGUA
FILE	3brelev
SCALE	1/4"=1'-0"
DRAWN	JWM
CHECKED	DPG
DATE	12/06/19
PLOT	12/06/19
REVISIONS	

SHEET TITLE:

**A-C4**

DRAWING NUMBER



**11 Schoen Place** phone: (585) 246.4149  
**2nd, Floor, Suites 2** phone: (585) 246.4195  
**Pittsford, NY 14534** [www.glasowarchitecture.com](http://www.glasowarchitecture.com)

# CreekView Apartments at Woodland Park Phase II

CANANDAIGUA, NEW YORK

*The DiMarco Group*  
on behalf of

CreekView

*Apartments, LLC*

1950 BRIGHTON HENRIETTA TOWNLINE ROAD  
SUITE 200

301E 200  
HESTER, NEW YORK 14623  
(585) 292-0480

FAX: (585) 292-1464

Copyright 2019 by Daniel P. Glasow, Architect. Copy No. part of this work may be reproduced in any form or by any means, electronic or mechanical, including photocopying, recording, or by any information storage or retrieval system, without permission in writing by Daniel P. Glasow, Architect.

**Drawing Alteration:**  
The following is an excerpt from the New York State Education

Law Article 145 Section 7209 and applies to the following:  
It is a violation of this law for any person unless he is acting

under the direct supervision of a licensed architect or a licensed professional engineer to alter an item in any way. If an item

bearing the seal of an architect or engineer is altered, the architect or engineer shall affix his seal and the notation

"ALTERED BY" followed by his signature and date of such alteration and a specific description of the alteration.

JOB NO.  
FILE  
SCALE  
DRAWN  
CHECKED  
DATE  
PLOT  
REVISIONS

CANANDAIGUA  
3brelev  
1/4"=1'-0"  
JWM  
DPG  
12/06/19  
12/06/19

SHEET TITLE:

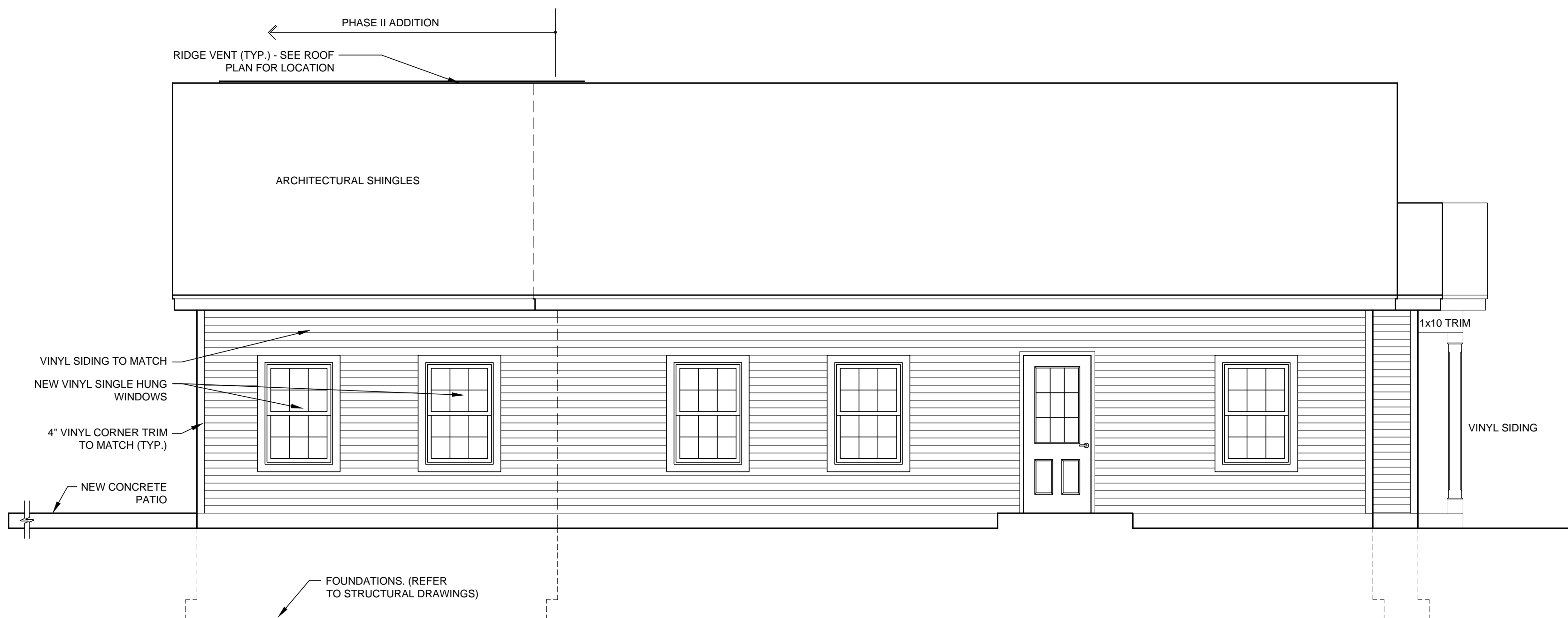
# A-C5

DRAWING NUMBER



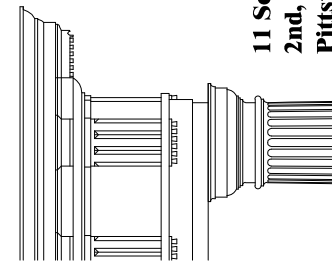
**FRONT ELEVATION**

1/4"=1'-0"



**SIDE ELEVATION**

1/4"=1'-0"



**GLASOW**  
**ARCHITECTURE**

11 Schoen Place  
2nd Floor, Suites 2  
Pittsford, NY 14534  
phone: (585) 246.4149  
phone: (585) 246.4195  
www.glasowarchitecture.com

## CreekView Apartments at Woodland Park Phase II

CANANDAIGUA, NEW YORK

*The DiMarco Group*  
on behalf of

*CreekView*

*Apartments, LLC*

1950 BRIGHTON HENRIETTA TOWNLINE ROAD  
ROCHESTER, NEW YORK 14623  
SUITE 200  
(585) 292-0480  
FAX: (585) 292-1464

Copyright 2019 by Daniel P. Glasow, Architect. Copy No. 1. This drawing is the property of Glasow Architecture, Inc. and is to be used only for the project and location specified. It is not to be reproduced, stored in a retrieval system, or by any information storage or retrieval system, without permission in writing by Daniel P. Glasow, Architect.

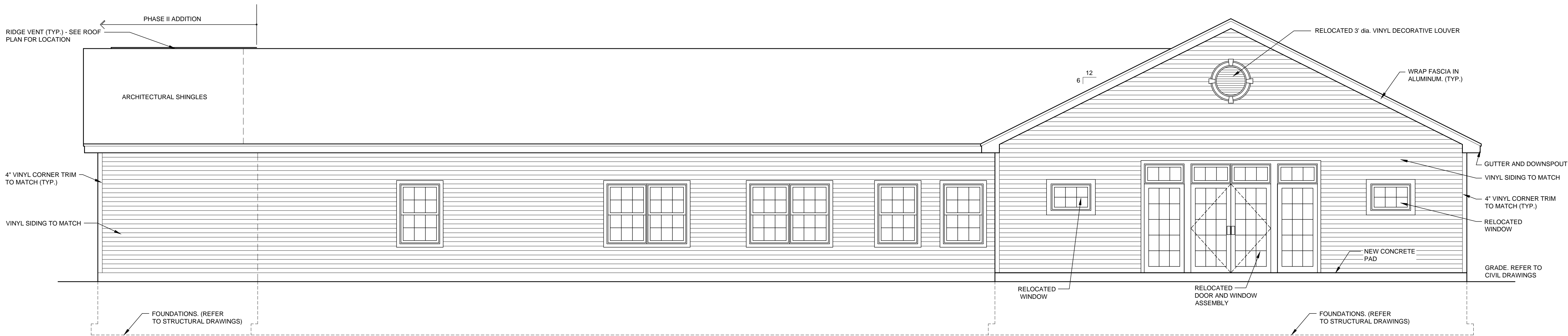
Drawing Alteration:  
This drawing was prepared from the New York State Education Law Article 145 Section 2209 and applies to the following:  
It is a violation of this law for any person, unless he is acting under the direct supervision of a licensed architect or a licensed professional engineer to alter an item in any way. If an item bearing the seal of an architect or engineer is altered, the alteration shall be noted on the drawing by the word "ALTERED BY" followed by his signature and date of such alteration and a specific description of the alteration.

JOB NO.	CANANDAIGUA II
FILE	CB1
SCALE	1/4"=1'-0"
DRAWN	JWM
CHECKED	DPG
DATE	12/06/19
PLOT	12/06/19
REVISIONS	

SHEET TITLE:

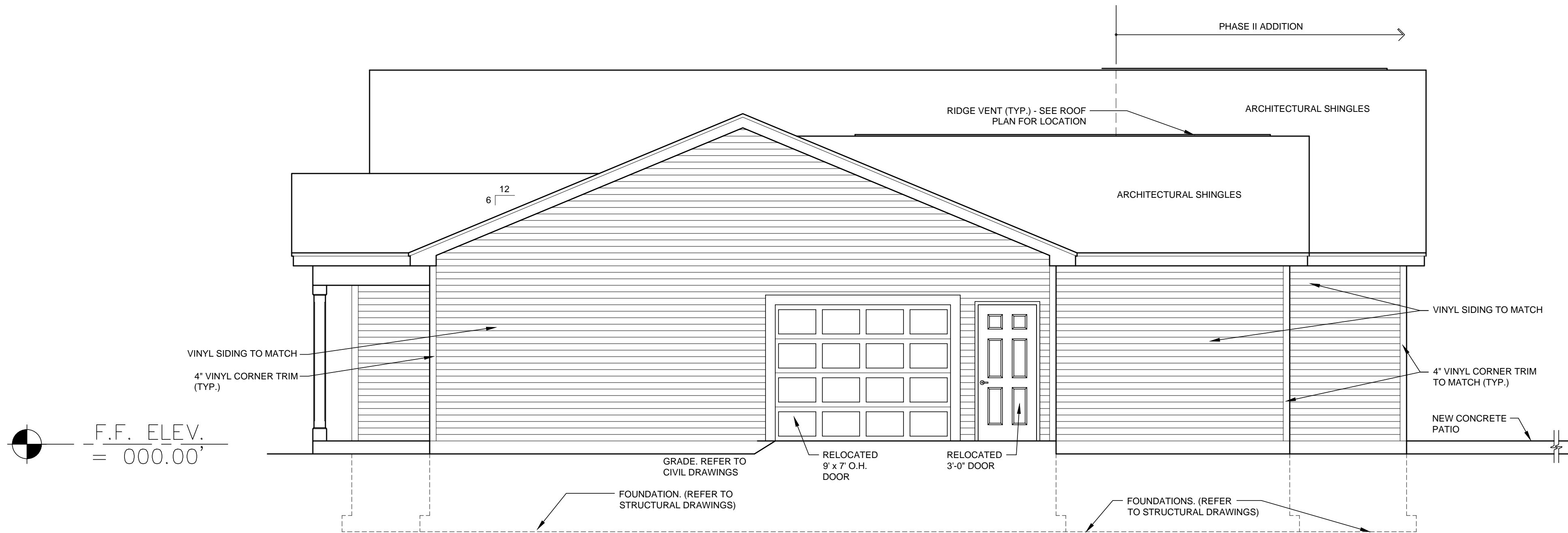
**A-D4**

DRAWING NUMBER



**REAR ELEVATION**

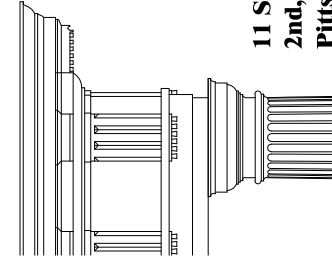
1/4"=1'-0"



**SIDE ELEVATION**

1/4"=1'-0"

F.F. ELEV.  
= 000.00



**GLASOW**  
**ARCHITECTURE**

11 Schoen Place  
2nd Floor, Suites 2  
Pittsford, NY 14534  
phone: (585) 246.4199  
phone: (585) 246.4195  
www.glasowarchitecture.com

## CreekView Apartments at Woodland Park Phase II

CANANDAIGUA, NEW YORK

**The DiMarco Group**  
on behalf of

**CreekView**

**Apartments, LLC**

1950 BRIGHTON HENRIETTA TOWNLINE ROAD  
ROCHESTER, NEW YORK 14623  
SUITE 200  
(585) 292-0480  
FAX: (585) 292-1464

Copyright 2019 by Daniel P. Glasow, Architect. Copy No. 1. This drawing is the property of Glasow Architecture and is to be used only for the project and location specified. It is not to be reproduced, stored in a retrieval system, or by any information storage or retrieval system, without permission in writing by Daniel P. Glasow, Architect.  
Drawing Alteration: This drawing is a revision of the original drawing. It is a violation of the law for any person, other than a licensed professional engineer or a licensed architect, to alter an item in any way. If an item bearing the seal of an architect or engineer is altered, the alteration shall be marked with the words "ALTERED BY" followed by the signature and date of such alteration and a specific description of the alteration.

JOB NO.	CANANDAIGUA II
FILE	CB1
SCALE	1/4"=1'-0"
DRAWN	JWM
CHECKED	DPG
DATE	12/06/19
PLOT	12/06/19
REVISIONS	

SHEET TITLE:

**A-D5**

DRAWING NUMBER