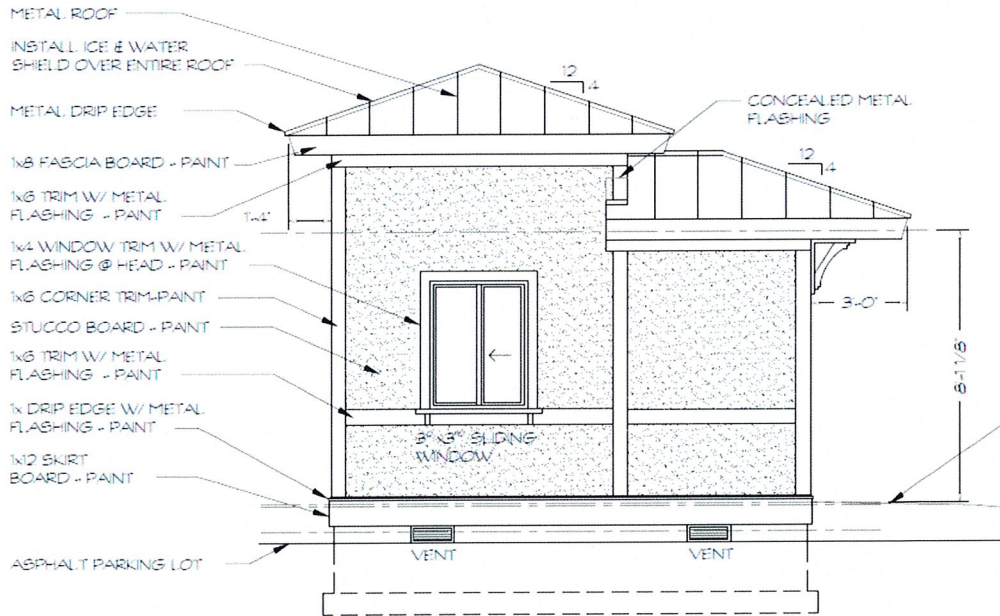




Roof: Metal Sales Roof Company, Color is Classic Red

Trim: Sherwin Williams, Color is Carriage Door (SW7594)

Building: Sherwin Williams, Color is Latte (SW6108)

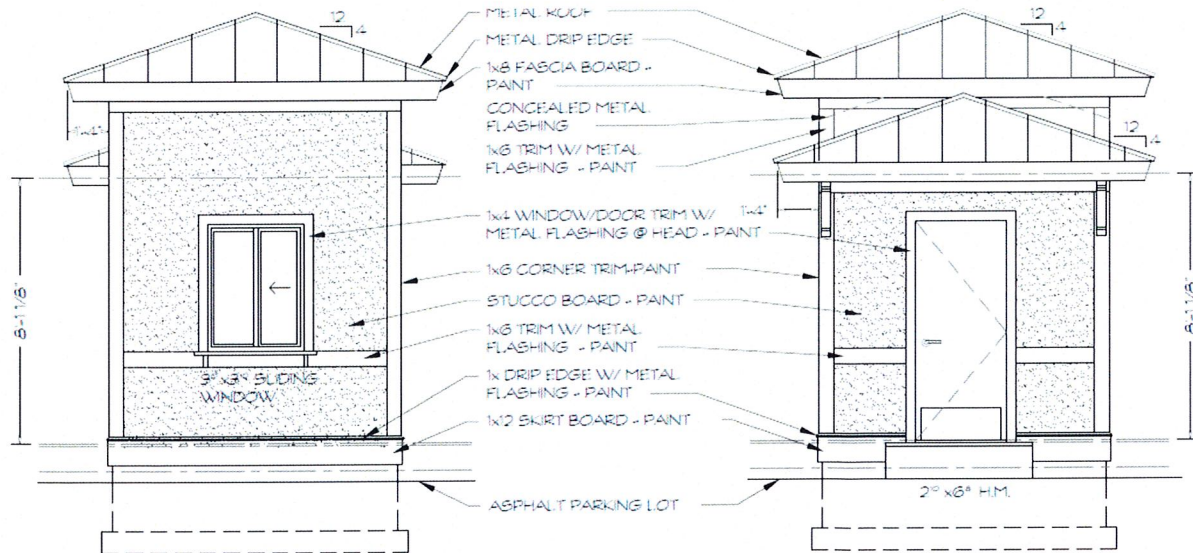


## SIDE ELEVATION

(OFF. SIDE ELEV. SIM.)

SCALE:  $\frac{1}{4}'' = 1'-0''$

NOTE: INSTALL SCONCES ABOVE EACH OPENING/SIGN PER OWNERS REQUEST. VERIFY WINDOW DIRECTIONS WITH OWNER.



## FRONT ELEVATION

## REAR ELEVATION

RECEIVED	TOWN OF CANANDAIGUA DEVELOPMENT OFFICE	FOR REVIEW
	MAR - 8 2018	



## Specifications

### Dimensions

Product Depth (in.)	16.625 in	Product Length (in.)	16.625 in
Product Height (in.)	11.5 in	Product Width (in.)	12.375 in

### Details

Exterior Lighting Product Type	Outdoor Lanterns	Maximum Wattage (watts)	100
Fixture Color/Finish	Champagne Silver	Number of Bulbs Required	1
Fixture Material	Aluminum	Outdoor Lighting Features	Dark Sky/Weather Resistant
Glass/Lens Type	No glass/lens	Power Type	Hardwired
Included	Hardware Included	Product Weight (lb.)	2.44 lb
Light Bulb Base Code	E26	Recommended Light Bulb Shape Code	A19
Light Bulb Type Included	Incandescent/No Bulbs Included	Returnable	90-Day
Maximum Bulb Wattage	100 W	Style	Transitional



BUILDING MOUNTED LIGHT