

# Mudslingers Drive-thru Coffee

3134 County Road 10  
Town of Canandaigua  
Ontario County, New York



LOCATION MAP  
NOT TO SCALE

DATE ISSUED  
March 8, 2018

PREPARED FOR  
  
Clay Van Doren  
6000 Goff Road  
Canandaigua, NY 14424

PREPARED BY

**BERGMANN**  
ARCHITECTS ENGINEERS PLANNERS

Bergmann Associates, Architects, Engineers,  
Landscape Architects & Surveyors, D.P.C.  
280 East Broad Street  
Suite 200  
Rochester, NY 14604  
  
office: 585.232.5135  
fax: 585.232.4652  
  
www.bergmannpc.com

## INDEX OF DRAWINGS

DRAWING NO.	TITLE	SHEET NO.
C000	COVER SHEET	1 of 6
EX-1	EXISTING CONDITIONS SURVEY MAP	2 of 6
C100	SITE & UTILITY PLAN	3 of 6
C110	GRADING AND EROSION CONTROL PLAN	4 of 6
C500	MISCELLANEOUS DETAILS	5 of 6
C501	MISCELLANEOUS DETAILS	6 of 6

APPROVED BY:

COUNTY WATER SUPERINTENDENT

DATE:

APPROVED BY:

COUNTY SEWER SUPERINTENDENT

DATE:

APPROVED BY:

TOWN ENGINEER

DATE:

APPROVED BY:

PLANNING BOARD CHAIRMAN

DATE:

**Dig Safely.  
New York**  
800-962-7962  
www.digsafelynewyork.org

☐ Call Before You Dig  
☐ Wait The Required Time  
☐ Confirm Utility Response  
☐ Respect the Marks  
☐ Dig With Care



2/12/2018 11:48 AM I:\Mudslingers\012611.00 VAN DOREN - MUDSLINGERS CANANDAIGUA\4.0 Drawings\4.2 Survey\Carlson\2017.dwg(012611base.dwg

REFERENCES:

- MAP ENTITLED "MIAR LAKES DEVELOPMENT SECOND S.B.S. VENTURE RESUBDIVISION" AS FILED IN THE ONTARIO COUNTY CLERK'S OFFICE IN MAP No. 11240.
- MAP ENTITLED "LAND TO BE CONVEYED TO DONALD E. COURTNEY" AS FILED IN THE ONTARIO COUNTY CLERK'S OFFICE IN MAP No. 13029.
- MAP ENTITLED "DISTANT HILLS PARK" AS FILED IN THE ONTARIO COUNTY CLERK'S OFFICE IN MAP No. 20922.
- MAP ENTITLED "PLAN OF LANDS OF JOSEPH & SUZANNE MASOTTI D/B/A/ COMATIS PROPERTIES & KIMBERLY ANN MASOTTI" AS FILED IN THE ONTARIO COUNTY CLERK'S OFFICE IN MAP No. 22181.
- MAP ENTITLED "LORENZO SUBDIVISION" AS FILED IN THE ONTARIO COUNTY CLERK'S OFFICE IN MAP No. 22436.
- MAP ENTITLED "FINAL SUBDIVISION CORTLAND L. BROVITZ" AS FILED AT THE ONTARIO COUNTY CLERK'S OFFICE IN MAP No. 29215.
- THE FOLLOWING DEEDS FILED IN THE ONTARIO COUNTY CLERK'S OFFICE:  
LIBER 962, PAGE 486  
LIBER 966, PAGE 828  
LIBER 983, PAGE 554  
LIBER 984, PAGE 113  
LIBER 984, PAGE 381  
LIBER 1052, PAGE 644
- ABSTRACTS OF THE TITLE PREPARED BY CROSSROADS ABSTRACT (SEARCH NUMBERS 0121803 & 0121802)

NOTES:

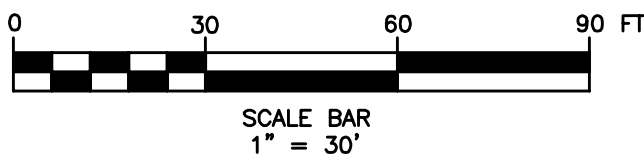
- BEARINGS SHOWN HEREON ARE REFERENCED TO NEW YORK STATE PLANE COORDINATE SYSTEM (CENTRAL ZONE) NAD 83, A CLOCKWISE ROTATION OF 07°-56'-28" IS REQUIRED TO CONVERT TO THE BEARINGS SHOWN ON REFERENCE No. 3. THE CONTOURS SHOWN HEREON ARE REFERENCED TO NAVD 88 THROUGH GPS OBSERVATIONS.
- PROPERTY IS LOCATED IN ZONE X (AREAS OUTSIDE 500 YEAR FLOOD) AS SHOWN ON FIRM MAP INDEX FOR THE TOWN OF CANANDAIGUA, COUNTY OF ONTARIO, COMMUNITY NUMBER 360598 0020 C, EFFECTIVE DATE MARCH 3, 1997.
- THE UTILITIES SHOWN HEREON ARE BASED ON AN INSTRUMENT LOCATION OF THE ABOVE GROUND FEATURES (MANHOLES, VALVES, HYDRANTS, ETC.). THE UNDERGROUND UTILITIES (WATER LINES, GAS LINES, ETC.) ARE BASED ON THE ABOVE GROUND FEATURES AND RECORD UTILITY PLANS AND STAKEOUT IN THE FIELD BY THEIR RESPECTIVE COMPANIES. UNDERGROUND UTILITIES ARE NOT CERTIFIED TO THEIR LOCATION OR COMPLETENESS.
- PROPERTY HAS ACCESS TO COUNTY ROAD No. 10 EXCLUSIVELY VIA THE 60' WIDE NON EXCLUSIVE INGRESS/EGRESS EASEMENT AS STATED IN REFERENCE No. 3 AND CONVEYED IN LIBER 984 OF DEEDS PAGE 113.
- PARCEL SUBJECT TO A RG&E POLE LINE UTILITY EASEMENT ALONG THE RIGHT OF WAY BOUNDARY OF TOWN LINE ROAD PER LIBER 346 OF DEEDS PAGE 280, AS FILED IN THE ONTARIO COUNTY CLERK'S OFFICE. WIDTH OF THE EASEMENT IS INDETERMINATE.
- PARCEL SUBJECT TO A NEW YORK TELEPHONE UTILITY EASEMENT ALONG THE RIGHT OF WAY BOUNDARY OF TOWN LINE ROAD PER LIBER 475 OF DEEDS PAGE 379, AS FILED IN THE ONTARIO COUNTY CLERK'S OFFICE. WIDTH OF THE EASEMENT IS INDETERMINATE.

ZONING DATA:

- |                            |                         |
|----------------------------|-------------------------|
| 1. EXISTING ZONING         | CC COMMUNITY COMMERCIAL |
| 2. SETBACKS:               |                         |
| FRONT                      | 100'                    |
| SIDE                       | 20'                     |
| 3. MAX. BUILDING HEIGHT:   | 35'                     |
| 4. MAX. BUILDING COVERAGE: | 35%                     |
| 5. GREEN SPACE REQUIRED:   | 30%                     |
| 6. PARKING:                | 1/150 GROSS SF          |

LEGEND

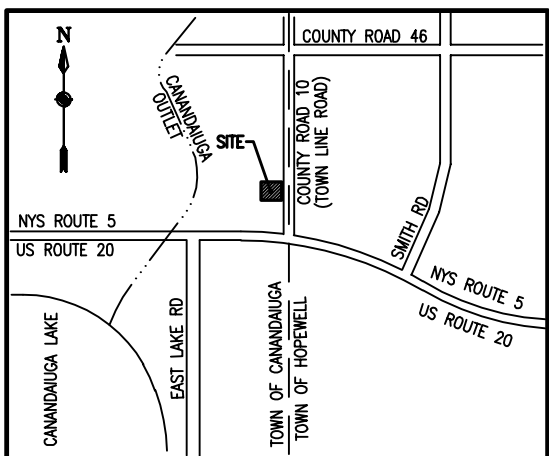
- |                         |   |
|-------------------------|---|
| ○ BOLLARD/POST          | — OHE — OHE — OHE — = OVERHEAD ELECTRIC     |
| □ ELECTRICAL BOX        | — — — — — = PARCEL BOUNDARY                 |
| □ GAS METER             | — — — — — = ADJOINING PARCEL BOUNDARY       |
| ⋈ GAS VALVE             | — — — — — = EASEMENT                        |
| □ CATCH BASIN           | — ST — ST — ST — = STORM/DRAINAGE LINE      |
| ○ HYDRANT               | — SAN — SAN — = SANITARY LINE               |
| ⊛ LIGHT POLE (PEDESTAL) | — SWLE — SWLE — = CENTERLINE OF SWALE/DITCH |
| ⊙ WATER MANHOLE         | — XXX — = MAJOR CONTOUR (5' INTERVAL)       |
| ⊠ PIN/REBAR (FOUND)     | — XXX — = MINOR CONTOUR (1' INTERVAL)       |
| ⊠ ONE POST SIGN         | — W — W — W — = UNDERGROUND WATER LINE      |
| ⊠ TWO POST SIGN         |   |
| ⊠ TRAFFIC CONTROL BOX   |   |
| ○ UTILITY POLE          |   |
| ⊠ WATER VALVE           |   |
| ← GUY WIRE              |   |
| ● PIN/REBAR (TO BE SET) |   |
| ○ BORING LOCATION       |   |



WE, BERGMANN ASSOCIATES, DO HEREBY CERTIFY THAT THIS MAP WAS MADE FROM THE NOTES OF AN INSTRUMENT SURVEY LAST DATED 1/29/18 AND FROM THE REFERENCES LISTED HEREON.

KEVIN M. SULLIVAN, L.S. No. 049963

DATE



SITE LOCATION MAP

NOT TO SCALE

# Mudslingers Drive-Thru Coffee

Townline Road  
Town of Canandaigua

## Clay Van Doren

6000 Goff Road  
Canandaigua, NY 14424



Bergmann Associates, Architects, Engineers,  
Landscape Architects & Surveyors, D.P.C.  
280 East Broad Street  
Suite 200  
Rochester, NY 14604

office: 585.232.5135  
fax: 585.232.4652

www.bergmannpc.com

REVISIONS

NO.	DATE	DESCRIPTION	REV.	CK'D
-----	------	-------------	------	------

Copyright © Bergmann Associates, Architects, Engineers,  
Landscape Architects & Surveyors, D.P.C.

Note:  
Unauthorized alteration or addition to this drawing is a violation of  
the New York State Education Law Article 145, Section 7209.

Project Manager: <b>B. Burni</b>	Checked By: <b>K. Sullivan</b>
Designed By: <b>T. Bolt</b>	Scale: <b>1" = 30'</b>
Date Issued: <b>02/12/18</b>	Project Number: <b>12611.00</b>

## EXISTING CONDITIONS PLAN

# EX-1



PROJECT DATA:

1. APPLICANT: CLAY VAN DOREN  
6000 GOFF ROAD  
CANANDAIGUA, NY 14424
2. TAX MAP No. 084.00-1-38
3. EXISTING ZONING: CC COMMUNITY COMMERCIAL
4. LOT AREA: 2.175 ACRES
5. PROPOSED USE: DRIVE-THRU ONLY COFFEE - 126 SF KIOSK

ZONING DATA:

	REQUIRED	PROPOSED
1. MIN. LOT AREA:	1 ACRE	2.175 ACRES
2. SETBACKS:		
FRONT	100'	109'
SIDE	20'	37.8
REAR	40'	302
MAX. BUILDING HEIGHT:	35'	35'
3. MAX. BUILDING COVERAGE:	35%	0.13%
4. MAX. BUILDING COVERAGE:	35%	0.13%
5. GREEN SPACE REQUIRED:	30%	90%

SITE PLAN LEGEND

	CONCRETE PAVEMENT
	PROPOSED PARKING SPACES
	PROPERTY LINE
	BUILDING SETBACK LINE
	SAW CUT LINE

SITE PLAN NOTES:

1. CONTRACTOR IS RESPONSIBLE FOR PROTECTION OF ALL PROPERTY CORNERS.
2. CONTRACTOR SHALL MATCH PROPOSED CURB, CONCRETE, CONCRETE GUTTER, AND PAVEMENT TO EXISTING IN GRADE AND ALIGNMENT.
3. CONTRACTOR SHALL REMOVE PAVEMENT & CONCRETE IN ACCORDANCE WITH SPECIFICATIONS OF THE ONTARIO COUNTY DPW.
4. THE EARTHWORK FOR ALL BUILDING FOUNDATIONS AND SLABS SHALL BE IN ACCORDANCE WITH GEOTECHNICAL REPORT, ARCHITECTURAL BUILDING PLANS AND SPECIFICATIONS.
5. CONTRACTOR SHALL REFER TO ARCHITECTURAL DRAWINGS FOR PRECISE BUILDING DIMENSIONS.
6. GENERAL CONTRACTOR IS TO COORDINATE WITH APPROPRIATE UTILITY COMPANIES PRIOR TO CONSTRUCTION, ADJUSTMENT, OR RELOCATION OF EXISTING UTILITIES AS DESIGNATED ON PLANS.
7. SEE COVER SHEET FOR LIST OF UTILITY COMPANIES.
8. ALL WORK AND MATERIALS SHALL COMPLY WITH ALL TOWN OF CANANDAIGUA, ONTARIO COUNTY, AND NEW YORK STATE DEPARTMENT OF TRANSPORTATION SPECIFICATIONS AND CODES AND O.S.H.A. STANDARDS.
9. CONTRACTOR IS RESPONSIBLE FOR REPAIRING THE DAMAGE DONE TO ANY EXISTING ITEM DURING CONSTRUCTION, SUCH AS, BUT NOT LIMITED TO, DRAINAGE, UTILITIES, STRUCTURES, PAVEMENT, STRIPING, CURB, ETC. REPAIRS SHALL BE EQUAL TO, OR BETTER THAN, EXISTING CONDITIONS. CONTRACTOR IS RESPONSIBLE TO DOCUMENT ALL EXISTING DAMAGE AND NOTIFY CONSTRUCTION MANAGER PRIOR TO CONSTRUCTION START.
10. ALL DIMENSIONS AND RADII ARE TO THE FACE OF CURB UNLESS OTHERWISE NOTED.
11. ALL CONCRETE TO HAVE A MINIMUM 28 DAY COMPRESSION STRENGTH OF 3,000 psi, OR AS NOTED.
12. ALL UNSURFACED AREAS DISTURBED BY GRADING OPERATIONS SHALL RECEIVE TOPSOIL TO A COMPACTED DEPTH OF 4 INCHES, SEED, MULCH AND WATER.
13. ALL NECESSARY INSPECTIONS AND/OR CERTIFICATIONS REQUIRED BY CODES AND/OR UTILITY SERVICE COMPANIES SHALL BE PERFORMED PRIOR TO ANNOUNCED BUILDING POSSESSION AND FINAL CONNECTION OF SERVICES.

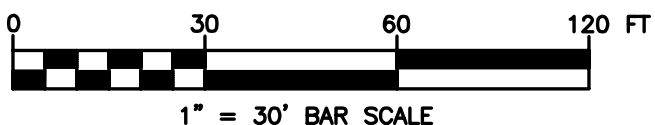
SANITARY SEWER NOTES:

1. ONLY DOMESTIC WASTE FROM THE PROJECT SHALL BE DISCHARGED INTO THE SANITARY SEWER.
2. ALL SANITARY LATERALS SHALL BE 4" PVC SDR-35 UNLESS OTHERWISE SPECIFIED ON THE PLANS.
3. A MINIMUM OF 4 FEET OF COVER SHALL BE PROVIDED OVER ENTIRE LENGTH OF ALL SANITARY LATERALS.
4. PRIOR TO CONSTRUCTION, A PERMIT MUST BE OBTAINED FROM THE ONTARIO COUNTY SEWER DISTRICT PERMIT OFFICE(585-396-4000).
5. THE ONTARIO COUNTY SEWER DISTRICT SHALL BE NOTIFIED FORTY-EIGHT HOURS IN ADVANCE OF CONNECTION OR TAP.
6. SANITARY SEWER LATERAL(S) AND APPURTENANCES SHALL BE CONSTRUCTED IN CONFORMANCE WITH THE REQUIREMENTS OF THE ONTARIO COUNTY SEWER DISTRICT.
7. FLOOR DRAINS, IF CONSTRUCTED, SHALL BE CONNECTED TO THE SANITARY SEWER. FLOOR DRAINS DO NOT INCLUDE FOUNDATION/FOOTER DRAINS. NOTE: ALL DISCHARGES TO THE SANITARY SEWER MUST COMPLY WITH THE EFFLUENT LIMITS OF THE LOCAL AND/OR ONTARIO COUNTY SEWER USE LAW.
8. MAXIMUM SPACING BETWEEN CLEANOUTS ON SANITARY LATERALS MAY NOT EXCEED SEVENTY-FIVE (75) FEET.
9. MAXIMUM SPACING BETWEEN SANITARY MANHOLES MAY NOT EXCEED FOUR-HUNDRED (400) FEET.
10. ANY PORTION OF SANITARY SEWER OR LATERAL WITH LESS THAN FOUR-FEET (4') OF COVER WILL REQUIRE CONCRETE ENCASEMENT.
11. EXFILTRATION AND/OR INFILTRATION FOR SANITARY SEWERS SHALL BE LIMITED TO 100 GALLONS PER DAY, PER MILE OF PIPE, PER INCH DIAMETER, AND SHALL BE PERFORMED IN ACCORDANCE WITH DISTRICT PROCEDURES. AIR TESTS, INCLUDING VACUUM TESTS, SHALL ARE REQUIRED ON SANITARY SEWER. TESTS WILL BE PERFORMED ONLY AFTER MANHOLE BENCHES AND INVERTS ARE COMPLETED. SLL LINES MUST BE FLUSHED AND CLEANED PRIOR TO TESTING. TELEVIEW TESTING MUST BE PERFORMED AFTER ALL OTHER TESTS ARE COMPLETE.
12. DEFLECTION TESTS SHALL BE PERFORMED ON ALL FLEXIBLE PIPE. THE TEST SHALL BE CONDUCTED AFTER ALL FINAL BACKFILL HAS BEEN IN PLACE AT LEAST THIRTY (30) DAYS. NO PIPE SHALL EXCEED A DEFLECTION OF FIVE PERCENT (5%). IF THE DEFLECTION TEST IS TO BE RUN USING A RIGID BALL OR MANOREL, IT SHALL HAVE A MINIMUM DIAMETER EQUAL TO NINETY-FIVE PERCENT (95%) OF THE INSIDE DIAMETER OF THE PIPE. THE TEST SHALL BE PERFORMED WITHOUT MECHANICAL PULLING DEVICES.

ONTARIO COUNTY SEWER DISTRICT NOTES:

1. SANITARY SEWER CONSTRUCTION AND/OR IMPROVEMENTS MUST BE IN ACCORDANCE WITH RECOMMENDED STANDARDS FOR WASTEWATER FACILITIES, THE MOST RECENT STANDARDS AND SPECIFICATIONS OF THE ONTARIO COUNTY SEWER DISTRICT, THE LOCAL MUNICIPALITY, N.Y.S. DEPARTMENTS OF HEALTH AND ENVIRONMENTAL CONSERVATION AND ANY OTHER AGENCIES HAVING JURISDICTION.
2. THE SEWER LINE SHALL BE LAID USING A PIPE LASER. GRADE SHALL BE CHECKED HALFWAY BETWEEN MANHOLES USING A STANDARD SURVEYOR'S LEVEL TO ENSURE THAT CORRECT GRADE IS BEING MAINTAINED.
3. THE CONTRACTOR IS RESPONSIBLE FOR COMPLIANCE WITH OSHA REQUIREMENTS IN ALL ASPECTS OF CONSTRUCTION.
4. FOLLOWING PROJECT COMPLETION AND APPROVAL THE DESIGN ENGINEER WILL SUBMIT RECORD MAP DRAWINGS ON MYLARS AND IN ELECTRONIC FORMAT (ON CD OR FLOPPY DISK) TO THE SEWER DISTRICT OFFICE FOR APPROVAL. THE DRAWINGS WILL SHOW ACTUAL LOCATIONS, SIZES, ELEVATIONS AND TYPES OF PIPE AND APPURTENANCES INCLUDING WYES AND CLEANOUTS, AS WELL AS PROFILES, EASEMENTS AND ANY OTHER RELATED INFORMATION REQUESTED BY SEWER DISTRICT STAFF. MAP SIZE WILL NOT EXCEED 24"x36".
5. THE CONTRACTOR SHALL MAINTAIN SANITARY FLOWS AT ALL TIMES BY METHODS ACCEPTABLE TO THE PROJECT ENGINEER AND THE COUNTY ENGINEER.
6. THE CONTRACTOR SHALL FURNISH THE COUNTY WITH SHOP DRAWINGS AND MATERIALS LIST AND SPECIFICATIONS PRIOR TO COMMENCEMENT OF CONSTRUCTION.

APPROVED BY:  TOWN ENGINEER  DATE: _____	APPROVED BY:  COUNTY WATER SUPERINTENDENT  DATE: _____
APPROVED BY:  PLANNING BOARD CHAIRMAN  DATE: _____	APPROVED BY:  COUNTY SEWER SUPERINTENDENT  DATE: _____



# Mudslingers Drive-thru Coffee

3134 Townline Road (CR 10)  
Town of Canandaigua, NY

## Clay Van Doren

6000 Goff Road  
Canandaigua, NY

### BERGMANN ARCHITECTS ENGINEERS PLANNERS

Bergmann Associates, Architects, Engineers,  
Landscape Architects & Surveyors, D.P.C.  
280 East Broad Street  
Suite 200  
Rochester, NY 14604

office: 585.232.5135  
fax: 585.232.4652

www.bergmannpc.com

NO.	DATE	DESCRIPTION
1	3/15/18	REV PER TOWN COMMENTS, RESUBMISSION

NOT APPROVED:  
THIS PLAN HAS NOT RECEIVED FINAL APPROVAL OF ALL REVIEWING AGENCIES. THIS PLAN IS SUBJECT TO REVISIONS UNTIL ALL APPROVALS ARE OBTAINED AND SHOULD NOT BE USED FOR CONSTRUCTION PURPOSES

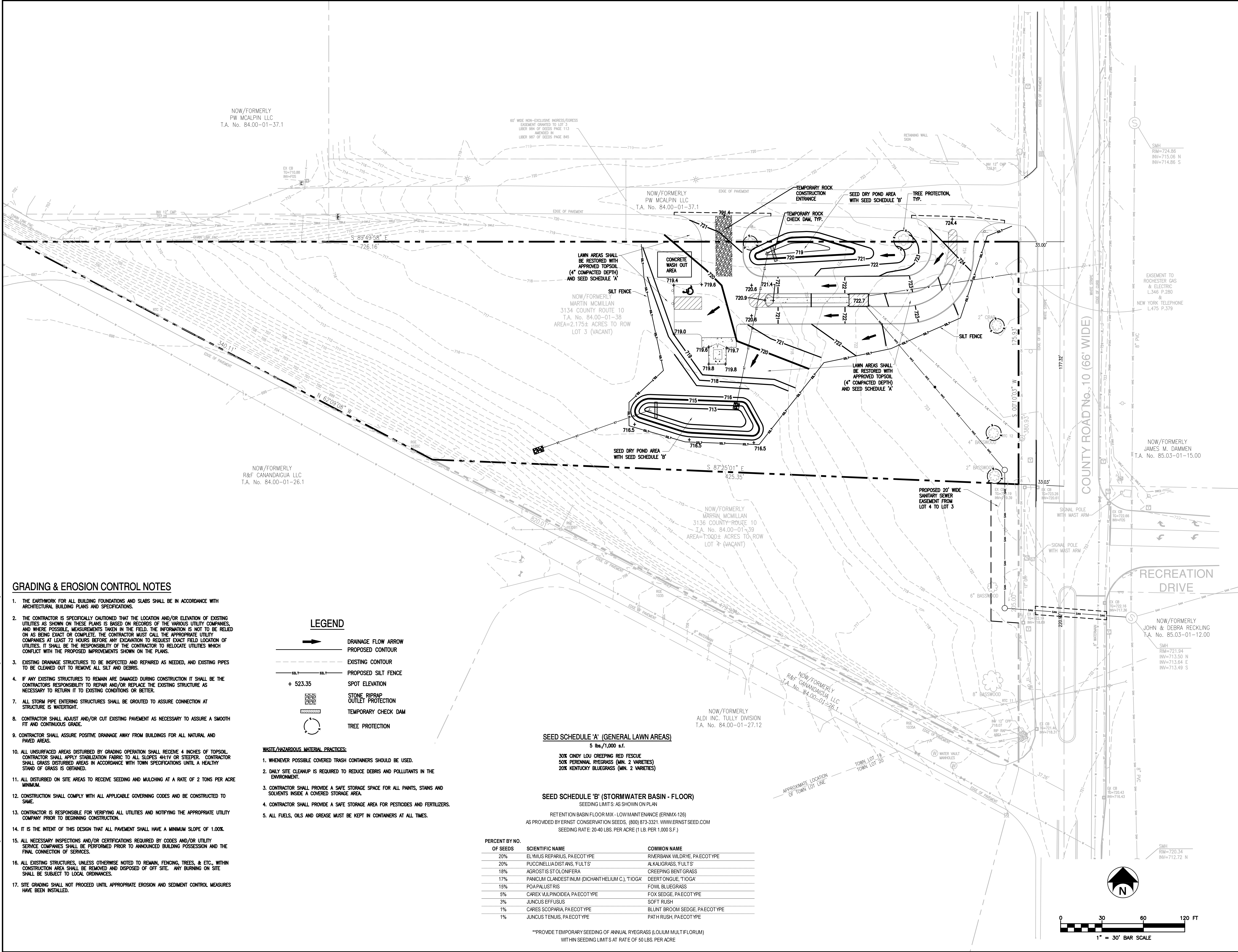
Copyright © Bergmann Associates, Architects, Engineers,  
Landscape Architects & Surveyors, D.P.C

Project Manager: B. Burni	Checked By: B. Burni
Designed By: T. Bolt	Drawn By: T. Bolt
Scale: 1" = 30'	Project Number: 12611.00
Date: 03/08/18	

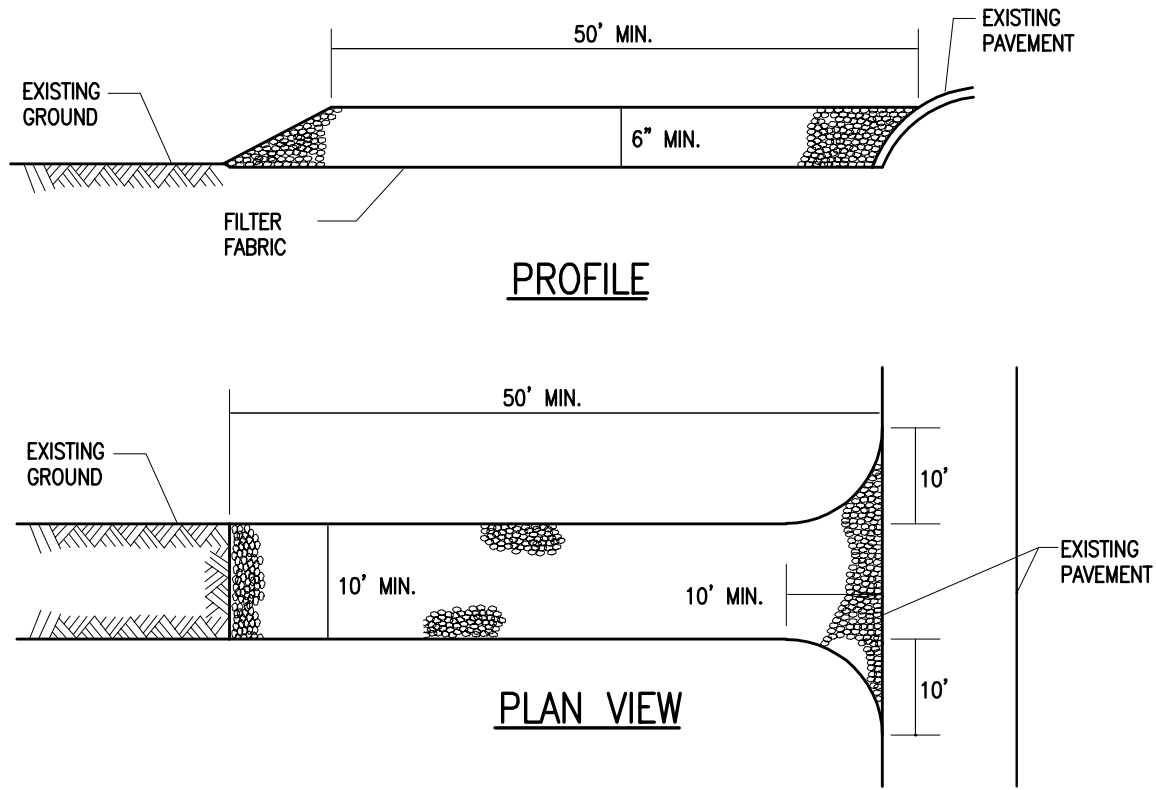
## SITE/UTILITY PLAN

# C100







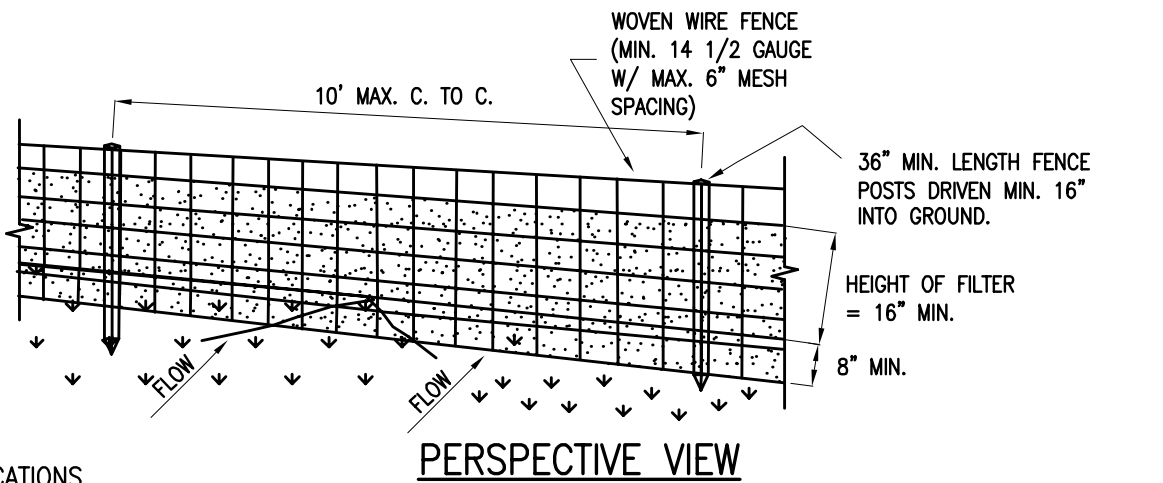


CONSTRUCTION SPECIFICATIONS

- STONE SIZE - USE 2" STONE, OR RECLAIMED OR RECYCLED CONCRETE EQUIVALENT.
- LENGTH - NOT LESS THAN 50 FEET (EXCEPT ON A SINGLE RESIDENCE LOT WHERE A 30 FOOT MINIMUM LENGTH WOULD APPLY).
- THICKNESS - NOT LESS THAN SIX (6) INCHES.
- WIDTH - TEN (10) FOOT MINIMUM, BUT NOT LESS THAN THE FULL WIDTH AT POINTS WHERE INGRESS OR EGRESS OCCURS.
- FILTER CLOTH - WILL BE PLACED OVER THE ENTIRE AREA PRIOR TO PLACING OF STONE. FILTER WILL NOT BE REQUIRED ON A SINGLE FAMILY RESIDENCE LOT.
- SURFACE WATER - ALL SURFACE WATER FLOWING OR DIVERTED TOWARDS CONSTRUCTION ENTRANCE SHALL BE PIPED ACROSS THE ENTRANCE. IF PIPING IS IMPRACTICAL, A MOUNTABLE BERM WITH 5:1 SLOPES WILL BE PERMITTED.
- MAINTENANCE - THE ENTRANCE SHALL BE MAINTAINED IN A CONDITION WHICH WILL PREVENT TRACKING OR FLOWING OF SEDIMENT ONTO PUBLIC RIGHTS-OF-WAY. THIS MAY REQUIRE PERIODIC TOP DRESSING WITH ADDITIONAL STONE AS CONDITIONS DEMAND AND REPAIR AND/OR CLEANOUT OF ANY MEASURES USED TO TRAP SEDIMENT. ALL SEDIMENT SPILLED, DROPPED, WASHED OR TRACKED ONTO PUBLIC RIGHTS-OF-WAY MUST BE REMOVED IMMEDIATELY.
- WASHING - WHEELS SHALL BE CLEANED TO REMOVE SEDIMENT PRIOR TO ENTRANCE ONTO PUBLIC RIGHTS-OF-WAY. WHEN WASHING IS REQUIRED, IT SHALL BE DONE ON AN AREA STABILIZED WITH STONE AND WHICH DRAINS INTO AN APPROVED SEDIMENT TRAPPING DEVICE.
- PERIODIC INSPECTION AND NEEDED MAINTENANCE SHALL BE PROVIDED AFTER EACH RAIN.

TEMPORARY STABILIZED CONSTRUCTION ENTRANCE DETAIL

N.T.S.

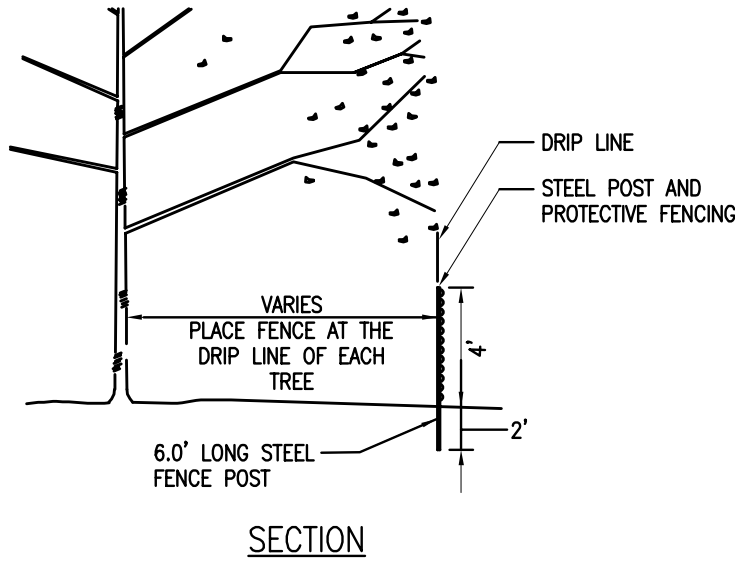


CONSTRUCTION SPECIFICATIONS

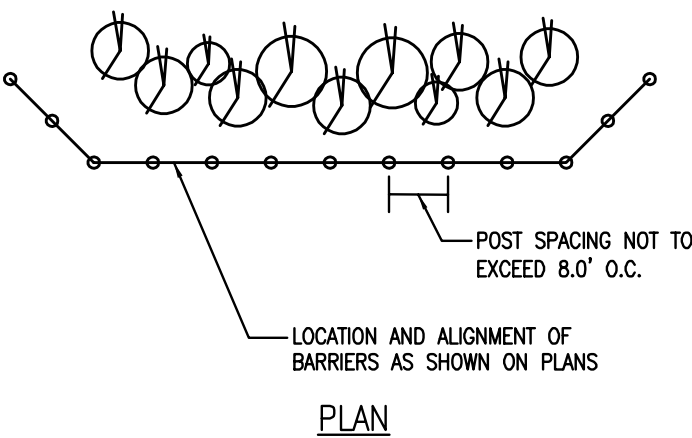
- WOVEN WIRE FENCE TO BE FASTENED SECURELY TO FENCE POSTS WITH WIRE TIES OR STAPLES. POSTS SHALL BE STEEL EITHER "T" OR "U" TYPE OR HARDWOOD.
- FILTER CLOTH TO BE TO BE FASTENED SECURELY TO WOVEN WIRE FENCE WITH TIES SPACED EVERY 24" AT TOP AND MID SECTION. FENCE SHALL BE WOVEN WIRE, 12 1/2 GAUGE, 6" MAXIMUM MESH OPENING.
- WHEN TWO SECTIONS OF FILTER CLOTH ADJOIN EACH OTHER THEY SHALL BE OVERLAPPED BY SIX INCHES AND FOLDED. FILTER CLOTH SHALL BE EITHER FILTER X, MIRAFI 100X, STABILINKA T140N, OR APPROVED EQUIVALENT.
- PREFABRICATED UNITS SHALL BE GEOTAB, ENVROFENCE, OR APPROVED EQUIVALENT.
- MAINTENANCE SHALL BE PERFORMED AS NEEDED AND MATERIAL REMOVED WHEN "BULGES" DEVELOP IN THE SILT FENCE.

SILT FENCE INSTALLATION DETAIL

N.T.S.



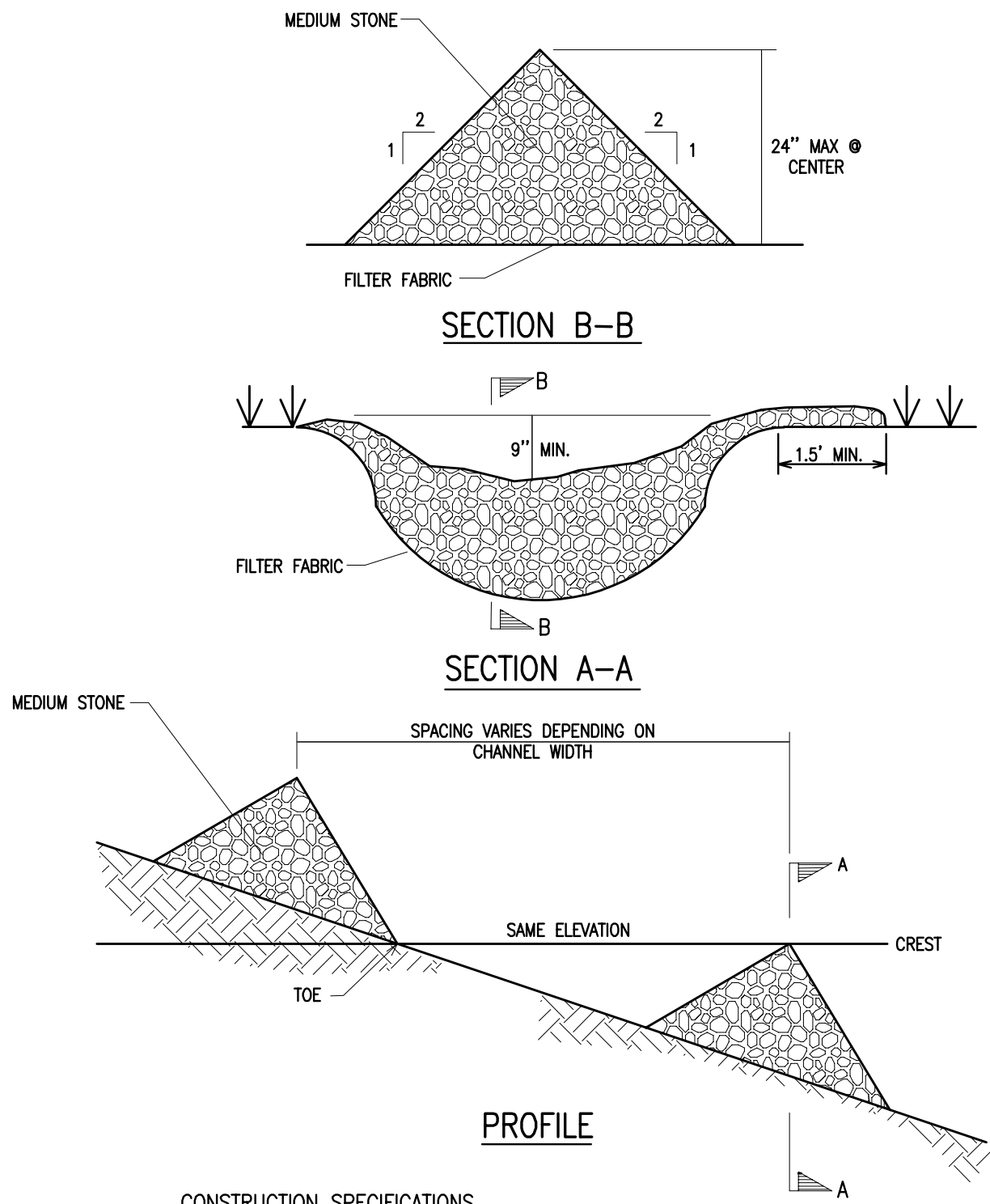
SECTION



PLAN

VEGETATION PROTECTION BARRIER DETAIL

N.T.S.



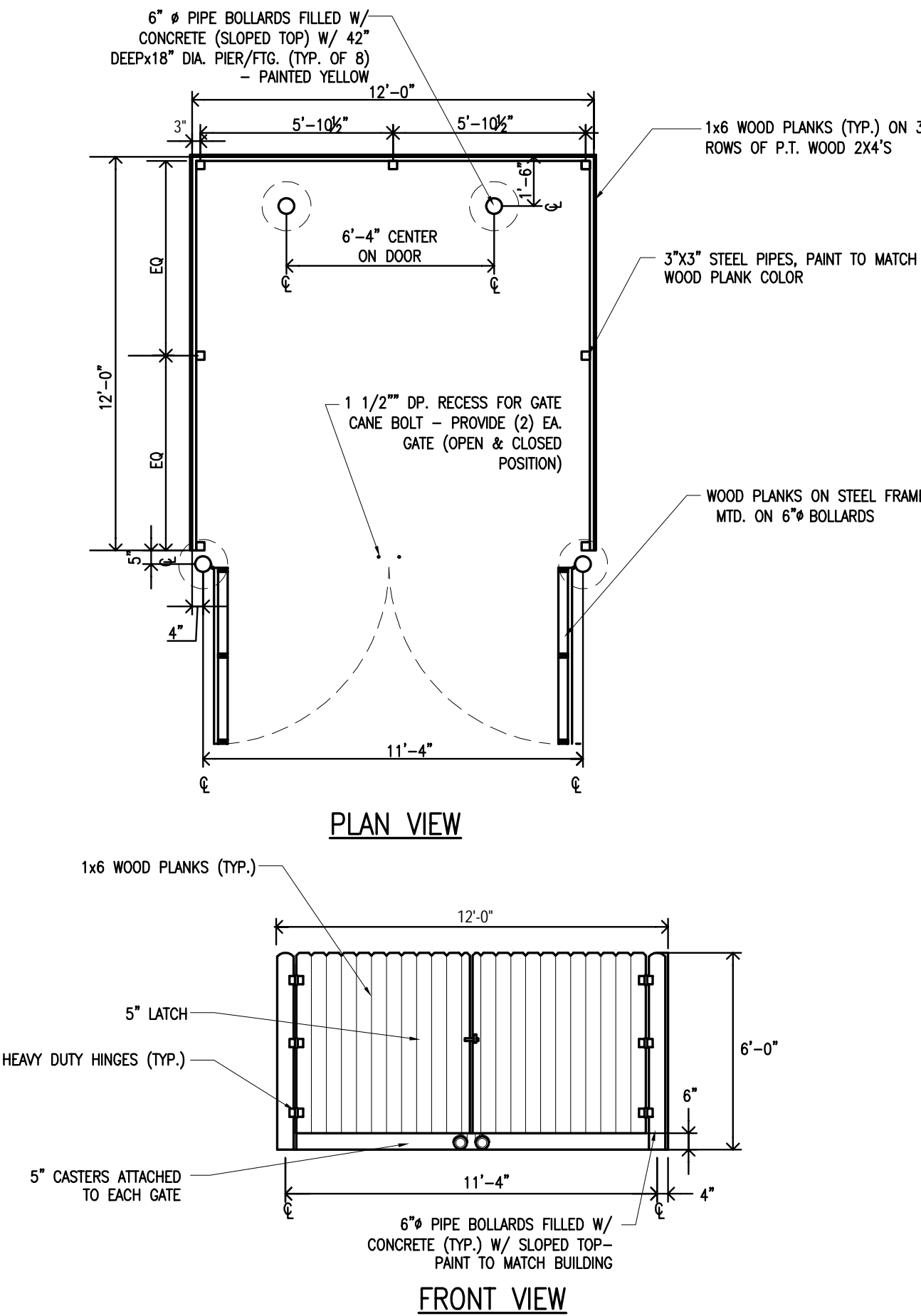
PROFILE

CONSTRUCTION SPECIFICATIONS

- STONE WILL BE PLACED ON A FILTER FABRIC FOUNDATION TO THE LINES GRADES AND LOCATIONS SHOWN ON THE PLAN.
- SET SPACING OF CHECK DAMS TO ASSUME THAT THE ELEVATIONS OF THE CREST OF THE DOWNSTREAM DAM IS AT THE SAME ELEVATION OF THE TOE OF THE UPSTREAM DAM.
- EXTEND THE STONE A MINIMUM OF 1.5' BEYOND THE DITCH BANKS TO PREVENT CUTTING AROUND THE DAM.
- PROTECT THE CHANNEL DOWNSTREAM OF THE LOWEST CHECK DAM FROM SCOUR AND EROSION WITH STONE OR LINER AS APPROPRIATE.
- ENSURE THAT CHANNEL APPURTENANCES SUCH AS CULVERT ENTRANCES BELOW CHECK DAMS ARE NOT SUBJECT TO DAMAGE OR BLOCKAGE FROM DISPLACED STONES.

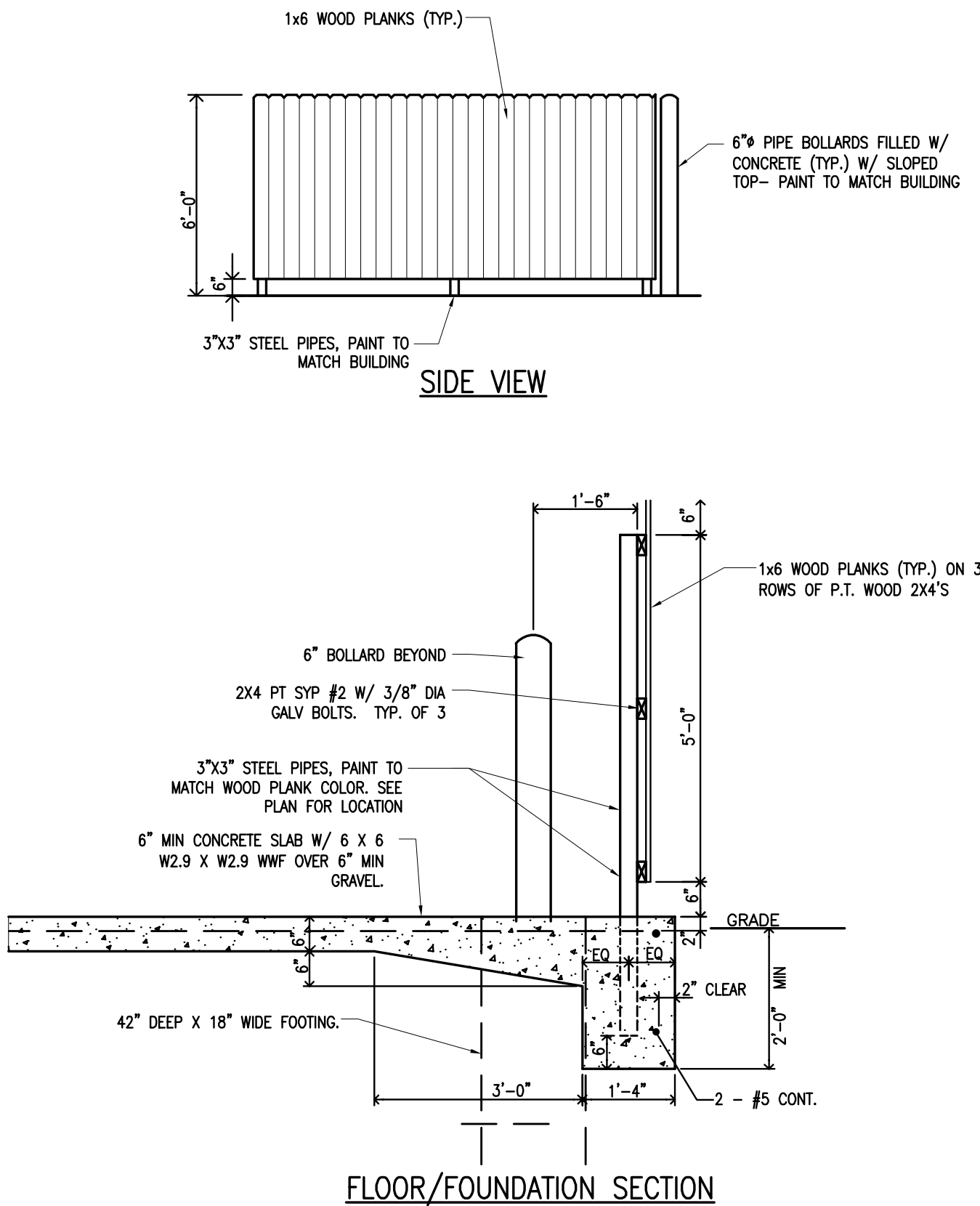
LIGHT STONE CHECK DAM

N.T.S.

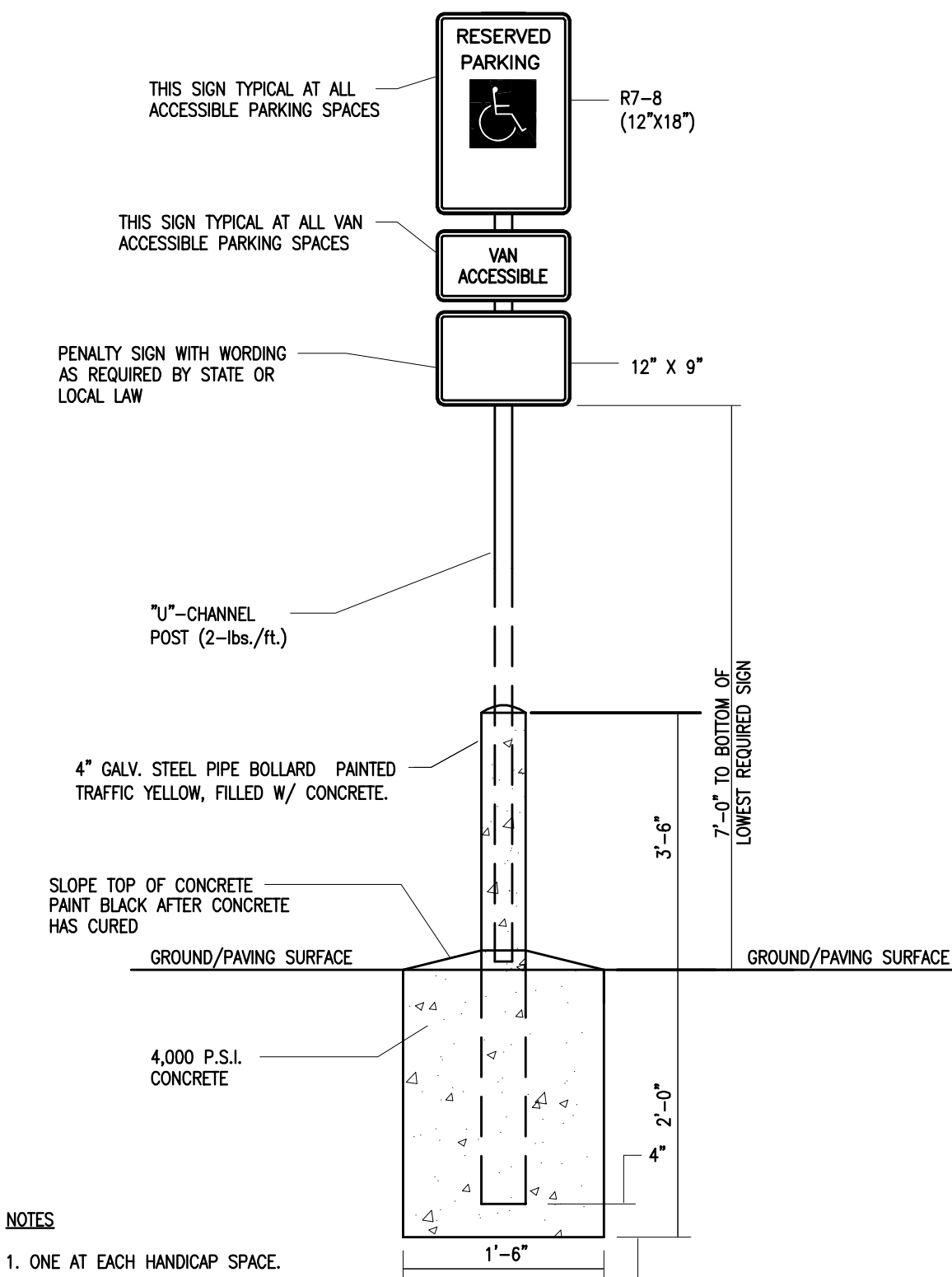


DUMPSTER ENCLOSURE DETAIL

NO SCALE



FLOOR/FOUNDATION SECTION

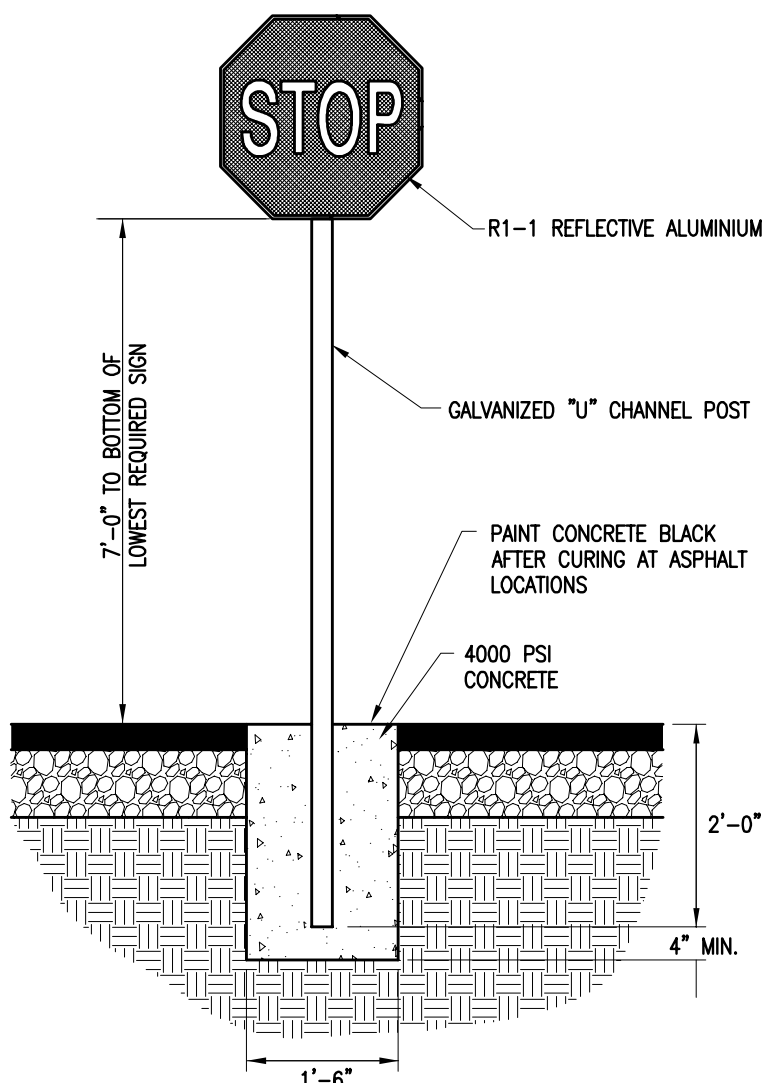


NOTES

- ONE AT EACH HANDICAP SPACE.
- WHERE HANDICAP SPACES FACE EACH OTHER WITHOUT WALKWAY, THERE SHALL BE ONE POST WITH SIGNS MOUNTED BOTH SIDES

ACCESSIBLE PARKING SIGN WITH BOLLARD DETAIL

N.T.S.



STOP SIGN DETAIL

N.T.S.

# Mudslingers Drive-thru Coffee

3134 Townline Road (CR 10)  
Town of Canandaigua, NY

## Clay Van Doren

6000 Goff Road  
Canandaigua, NY



Bergmann Associates, Architects, Engineers,  
Landscape Architects & Surveyors, D.P.C.  
280 East Broad Street  
Suite 200  
Rochester, NY 14604

office: 585.232.5135  
fax: 585.232.4652

www.bergmannpc.com

NO.	DATE	DESCRIPTION
1	3/15/18	REV PER TOWN COMMENTS, RESUBMISSION

NOT APPROVED:  
THIS PLAN HAS NOT RECEIVED FINAL APPROVAL OF ALL REVIEWING AGENCIES. THIS PLAN IS SUBJECT TO REVISIONS UNTIL ALL APPROVALS ARE OBTAINED AND SHOULD NOT BE USED FOR CONSTRUCTION PURPOSES

Copyright © Bergmann Associates, Architects, Engineers,  
Landscape Architects & Surveyors, D.P.C

Project Manager: B. Burri	Checked By: B. Burri
Designed By: T. Bolt	Drawn By: T. Bolt
Scale: As Noted	Project Number: 12611.00
Date Issued: 03/08/18	

## MISCELLANEOUS DETAILS

C500



