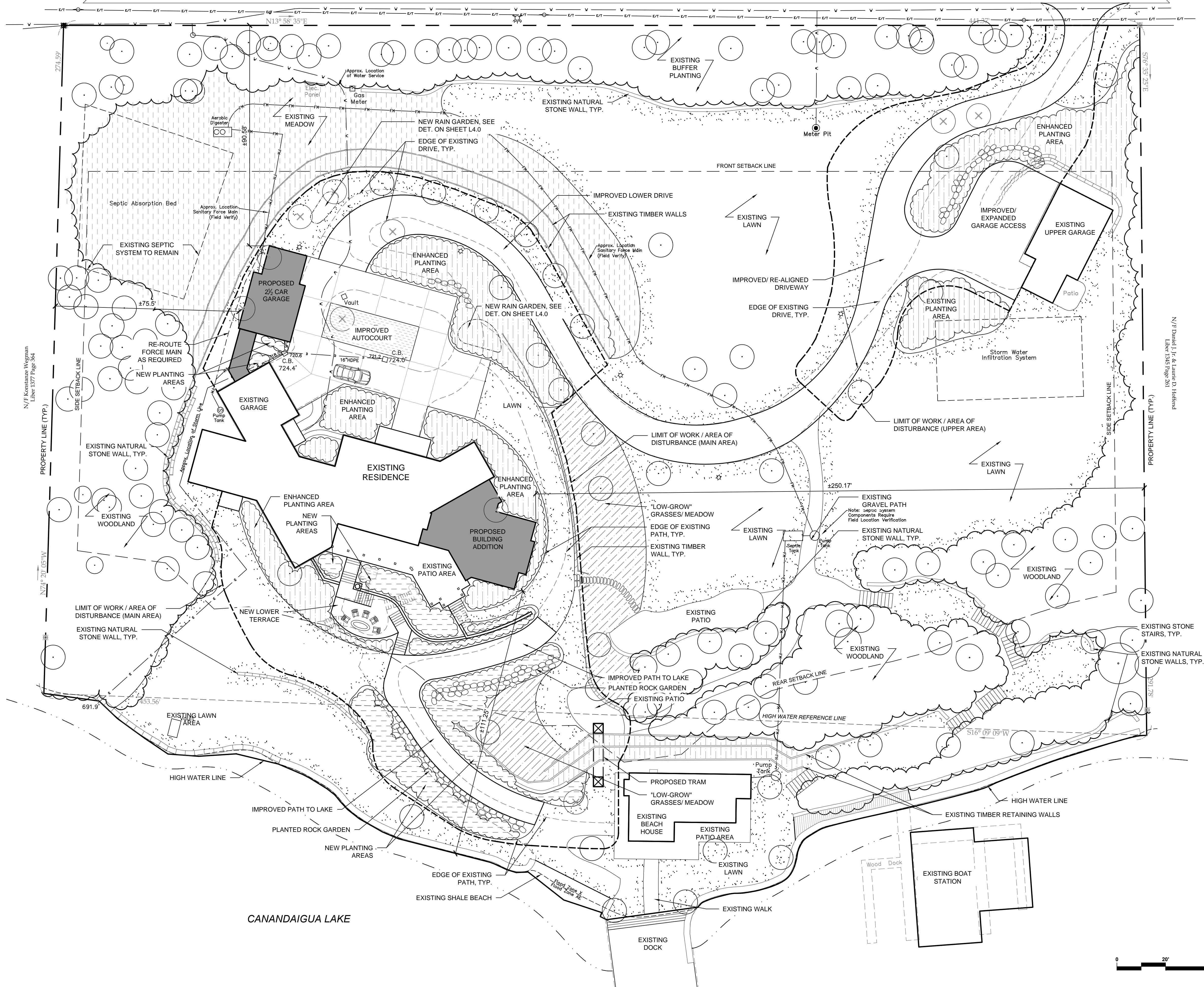


County Road 16  
(R.O.W. Varies)  
(30' Pavement Width)



LAYOUT LEGEND

ABBREVIATION OR SYMBOL	DESCRIPTION
	EXISTING TREE
	EXISTING TREE TO BE REMOVED
	PLANTING AREA
	PROPERTY LINE
	SETBACK LINE
	LIMITS OF WORK / AREA OF DISTURBANCE
	EXISTING MEADOW
	NEW "LOW-GROW" GRASSES/ MEADOW
	EXISTING PLANTING AREA
	ENHANCED PLANTING AREA
	NEW PLANTING AREA
	EXISTING LAWN AREA
	EXISTING EDGE OF WOODLAND / WOODED AREA

LAYOUT NOTES:

- EXISTING CONDITIONS/ BASE MAP INFORMATION IS FROM A SITE SURVEY CONDUCTED BY VENEZIA LAND SURVEYORS AND CIVIL ENGINEERS TITLED "4885 COUNTY ROAD 16" AND DATED 06/11/2019.
- LOCATE, PROTECT, AND MAINTAIN BENCH MARKS, MONUMENTS, CONTROL POINTS, AND PROJECT ENGINEERING REFERENCE POINTS.
- EXAMINE THE AREAS AND CONDITIONS UNDER WHICH SITE WORK WILL BE PERFORMED. REPORT ANY DISCREPANCIES WITH THE DRAWINGS TO THE LANDSCAPE ARCHITECT. DO NOT PROCEED WITH THE WORK UNTIL UNSATISFACTORY CONDITIONS ARE CORRECTED.
- PRIOR TO THE START OF CONSTRUCTION, THE CONTRACTOR SHALL LAYOUT THE PROJECT IN THE FIELD FOR REVIEW WITH THE LANDSCAPE ARCHITECT. CONTRACTOR SHALL COORDINATE WITH THE LANDSCAPE ARCHITECT TO MAKE MINOR FIELD ADJUSTMENTS TO THE LAYOUT AS REQUIRED TO ACHIEVE THE DESIGN INTENT.
- THE CONTRACTOR SHALL VERIFY THE LAYOUT OF ALL SITE ELEMENTS AND REPORT CONFLICTS TO THE LANDSCAPE ARCHITECT.
- THE CONTRACTOR SHALL COORDINATE WITH UTILITY AGENCIES TO VERIFY THE LOCATION OF ALL UNDERGROUND UTILITIES PRIOR TO COMMENCING WORK.
- ALL EXISTING TREES TO REMAIN SHALL BE PROTECTED FOR THE DURATION OF CONSTRUCTION.

AREA OF DISTURBANCE

SEE L2.0 FOR AREAS OF DISTURBANCE

ONE STAGE SITE PLAN APPROVAL

PLANNING BOARD CHAIRPERSON	DATE
TOWN WATER SUPERINTENDENT	DATE
TOWN ENGINEER	DATE

NOTE:  
NO BUILDING PERMIT MAY BE ISSUED UNTIL FINAL SITE PLAN APPROVAL HAS BEEN GRANTED AND THE FINAL SITE PLAN SIGNED BY THE PLANNING BOARD CHAIRPERSON



Scale:	1"=20'-0"	Checked By:	MHB	Drawn By:	DPZ/SKP	Design By:	BLA	Date:	06.14.2019	1 REV. PER PROJ COMMENTS	Revisions	Date:	6-21-2019
Project No:													