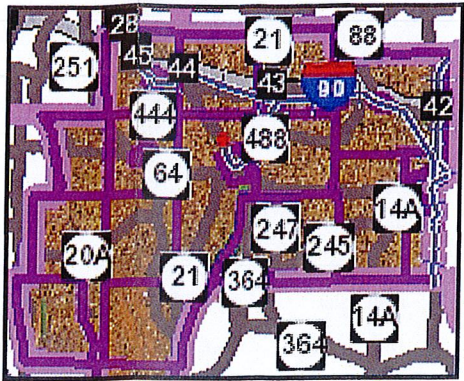


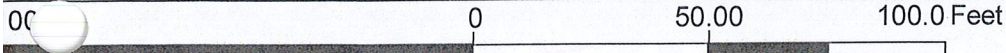
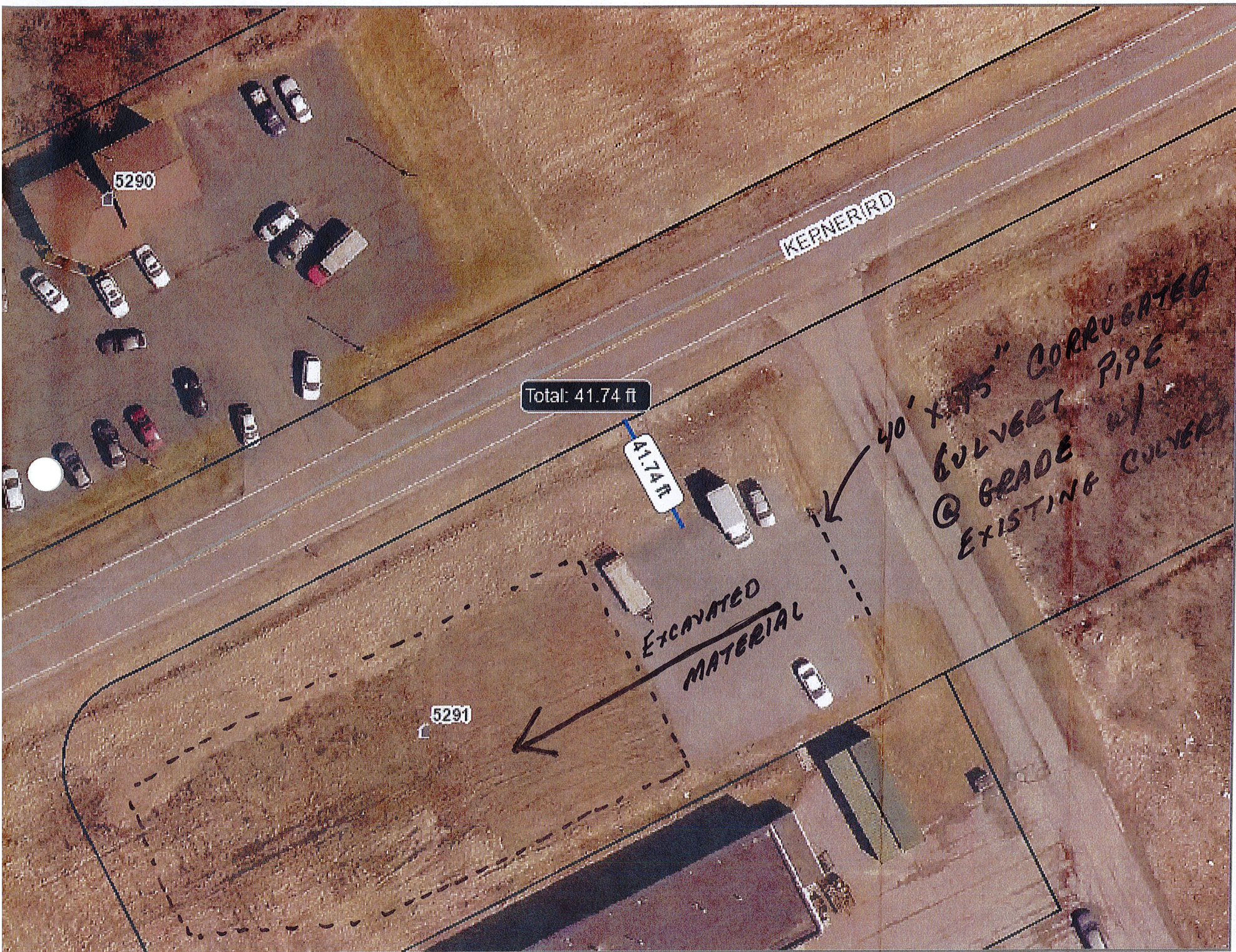


My Map



Legend

- Address Points
- Thruway Exits
- Tax Parcels
- Streets
 - Interstate
 - State or US Routes
 - County Roads
 - Local Public Roads
 - Private Roads
- Railroads
- Streams
- Municipal Boundaries
- Finger Lakes Region
- Northwest Quadrant
 - Red: Band_1
 - Green: Band_2
 - Blue: Band_3
- Northeast Quadrant
 - Red: Band_1
 - Green: Band_2
 - Blue: Band_3
- Southeast Quadrant
 - Red: Band_1
 - Green: Band_2

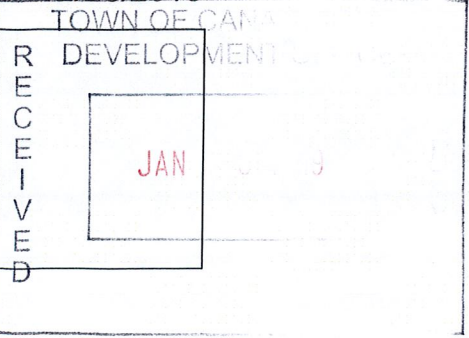


1: 600

This map and information is provided AS IS and Ontario County makes no warranties or guarantees, expressed or implied, including warranties of title, non-infringement, merchantability and that of fitness for a particular purpose concerning this map the information herein. User assumes all risks and responsibility for determining whether this map is sufficient for purposes intended.

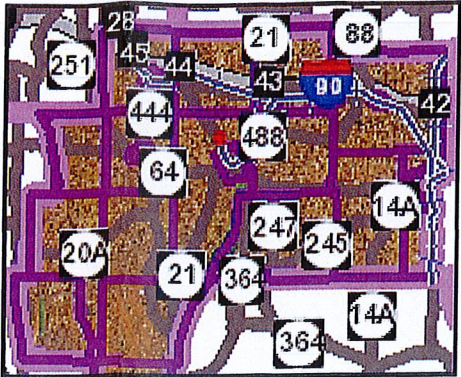
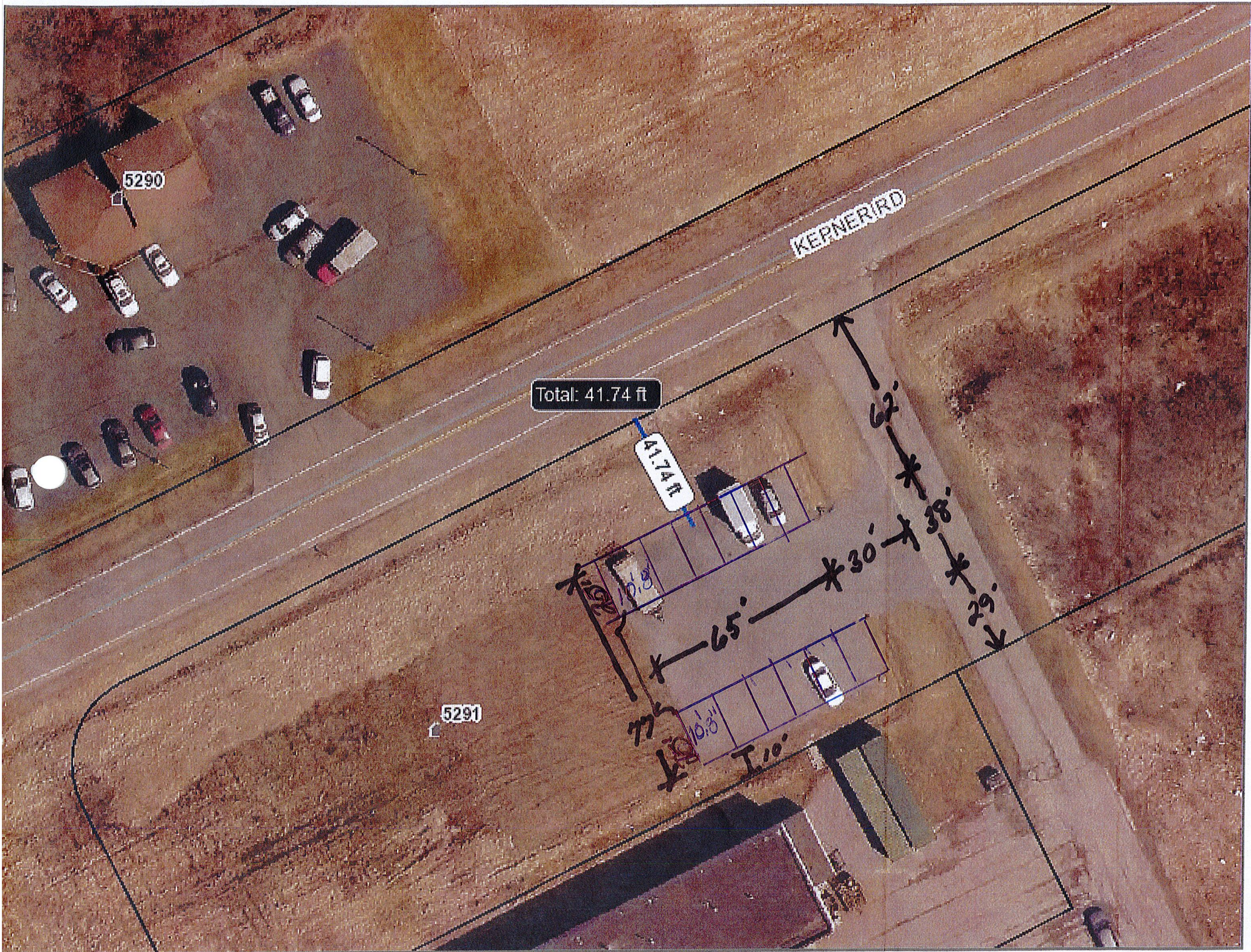
Report Created: 12/28/2018

Notes





My Map



Legend

- Address Points
- Thruway Exits
- Tax Parcels
- Streets
 - Interstate
 - State or US Routes
 - County Roads
 - Local Public Roads
 - Private Roads

- Railroads
- Streams
- Municipal Boundaries
- Finger Lakes Region

- Northwest Quadrant
 - Red: Band_1
 - Green: Band_2
 - Blue: Band_3

- Northeast Quadrant
 - Red: Band_1
 - Green: Band_2
 - Blue: Band_3

- Southeast Quadrant
 - Red: Band_1
 - Green: Band_2

TOWN OF CANANDAIGUA
DEVELOPMENT OFFICE
RECEIVED
JAN 8 2019
FOR REVIEW

TOWN OF CANANDAIGUA
DEVELOPMENT OFFICE
RECEIVED
JAN 9 2019
FOR REVIEW

Report Created: 12/28/2018

Notes

100 0 50.00 100.0 Feet

1: 600

This map and information is provided AS IS and Ontario County makes no warranties or guarantees, expressed or implied, including warranties of title, non-infringement, merchantability and that of fitness for a particular purpose concerning this map the information herein. User assumes all risks and responsibility for determining whether this map is sufficient for purposes intended.