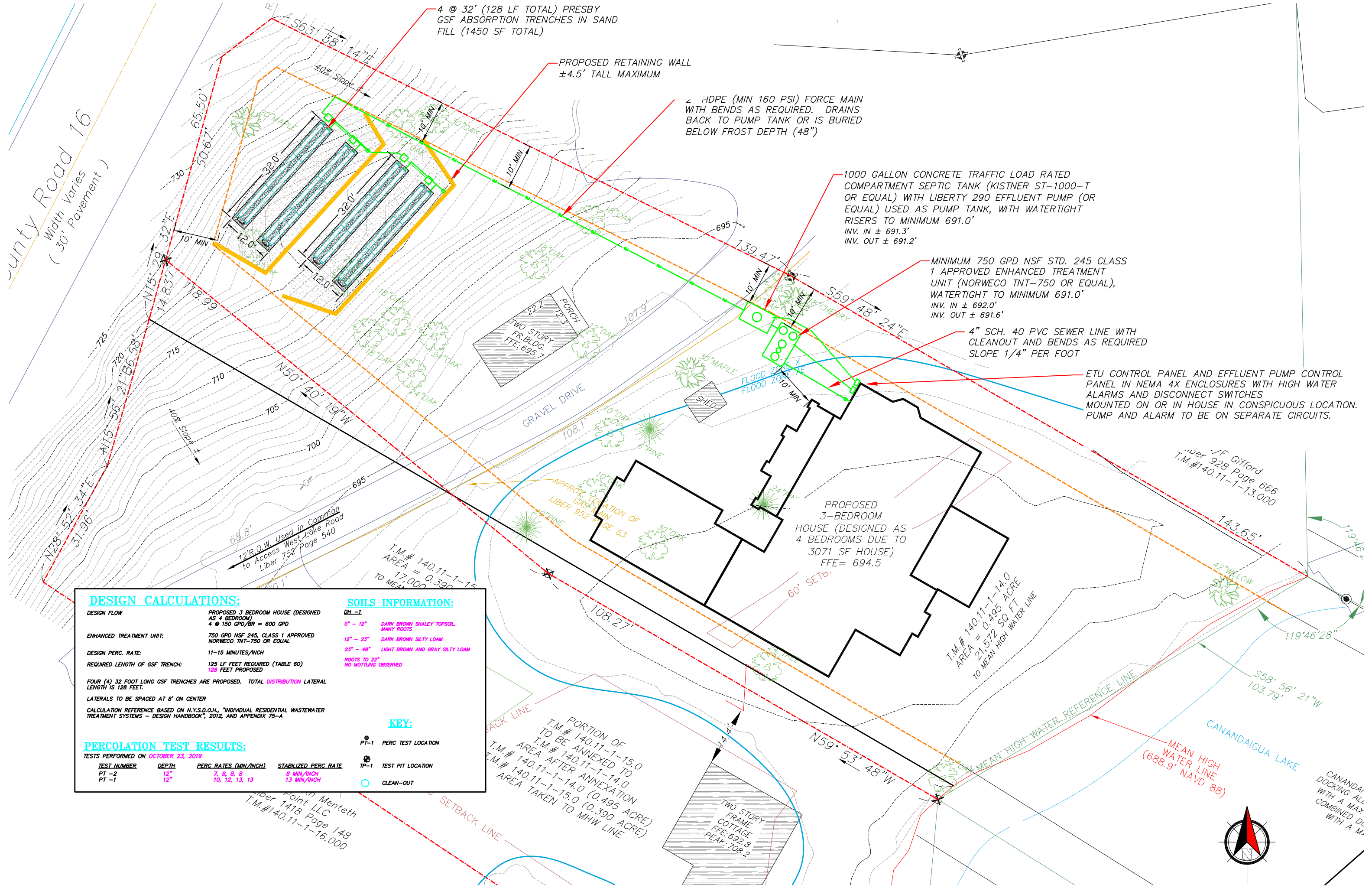


County Road 16  
Width Varies  
(30' Pavement)



4 @ 32' (128 LF TOTAL) PRESBY  
GSF ABSORPTION TRENCHES IN SAND  
FILL (1450 SF TOTAL)

PROPOSED RETAINING WALL  
±4.5' TALL MAXIMUM

2" HDPE (MIN 160 PSI) FORCE MAIN  
WITH BENDS AS REQUIRED. DRAINS  
BACK TO PUMP TANK OR IS BURIED  
BELOW FROST DEPTH (48")

1000 GALLON CONCRETE TRAFFIC LOAD RATED  
COMPARTMENT SEPTIC TANK (KISTNER ST-1000-T  
OR EQUAL) WITH LIBERTY 290 EFFLUENT PUMP (OR  
EQUAL) USED AS PUMP TANK, WITH WATERTIGHT  
RISERS TO MINIMUM 691.0'  
INV. IN ± 691.3'  
INV. OUT ± 691.2'

MINIMUM 750 GPD NSF STD. 245 CLASS  
1 APPROVED ENHANCED TREATMENT  
UNIT (NORWECO TNT-750 OR EQUAL),  
WATERTIGHT TO MINIMUM 691.0'  
INV. IN ± 692.0'  
INV. OUT ± 691.6'

4" SCH. 40 PVC SEWER LINE WITH  
CLEANOUT AND BENDS AS REQUIRED  
SLOPE 1/4" PER FOOT

ETU CONTROL PANEL AND EFFLUENT PUMP CONTROL  
PANEL IN NEMA 4X ENCLOSURES WITH HIGH WATER  
ALARMS AND DISCONNECT SWITCHES  
MOUNTED ON OR IN HOUSE IN CONSPICUOUS LOCATION.  
PUMP AND ALARM TO BE ON SEPARATE CIRCUITS.

**DESIGN CALCULATIONS:**

**DESIGN FLOW**  
PROPOSED 3 BEDROOM HOUSE (DESIGNED  
AS 4 BEDROOM)  
4 @ 150 GPD/BR = 600 GPD

**ENHANCED TREATMENT UNIT:**  
750 GPD NSF 245, CLASS 1 APPROVED  
NORWECO TNT-750 OR EQUAL

**DESIGN PERC. RATE:**  
11-15 MINUTES/INCH

**REQUIRED LENGTH OF GSF TRENCH:**  
125 LF FEET REQUIRED (TABLE 6D)  
128 FEET PROPOSED

FOUR (4) 32 FOOT LONG GSF TRENCHES ARE PROPOSED. TOTAL DISTRIBUTION LATERAL  
LENGTH IS 128 FEET.

LATERALS TO BE SPACED AT 8' ON CENTER

CALCULATION REFERENCE BASED ON N.Y.S.D.O.H., "INDIVIDUAL RESIDENTIAL WASTEWATER  
TREATMENT SYSTEMS - DESIGN HANDBOOK", 2012, AND APPENDIX 75-A

**SOILS INFORMATION:**

**DL-1**  
0" - 12" DARK BROWN SHALEY TOPSOIL,  
MANY ROOTS  
12" - 23" DARK BROWN SILTY LOAM  
23" - 48" LIGHT BROWN AND GRAY SILTY LOAM  
ROOTS TO 22"  
NO MOTTLING OBSERVED

**PERCOLATION TEST RESULTS:**

TESTS PERFORMED ON OCTOBER 23, 2019

TEST NUMBER	DEPTH	PERC. RATES (MIN/INCH)	STABILIZED PERC. RATE
PT -2	12"	7, 8, 8, 8	8 MIN/INCH
PT -1	12"	10, 12, 13, 13	13 MIN/INCH

**KEY:**

- PT-1 PERC TEST LOCATION
- TP-1 TEST PIT LOCATION
- CLEAN-OUT

PORTION OF  
T.M.# 140.11-1-15.0  
TO BE ANNEXED TO  
T.M.# 140.11-1-14.0  
AREA AFTER ANNEXATION  
T.M.# 140.11-1-14.0 (0.495 ACRE)  
T.M.# 140.11-1-15.0 (0.390 ACRE)  
AREA TAKEN TO MHW LINE

T.M.# 140.11-1-14.0  
AREA = 0.495 ACRE  
21,572 SQ. FT.  
TO MEAN HIGH WATER LINE

MEAN HIGH  
WATER LINE  
(688.9' NAVD 88)



CANANDAIGUA LAKE  
DOCKING ALL  
WITH A MAX  
COMBINED DL  
WITH A M.