



ANNEX F TOWN OF CANANDAIGUA

ANNEX F: TOWN OF CANANDAIGUA

Jurisdiction Profile	2
Overview	2
Note to the Reviewer	2
Population and Demographics	3
Population Growth	4
Future Development	4
Plan Maintenance	5
Public Participation	5
Hazard Profiles	7
Dam Failure	7
Drought	8
Extreme Cold	9
Extreme Heat	10
Flood	11
Hail	15
Ice Storm	18
Landslide	19
Lightning	20
Snow Storm	22
Tornado	23
Wildfire	25
Wind	29
Climate Change Considerations	31
Human-Caused Hazards	31
Previous Mitigation Actions	32
New Mitigation Actions	35
Capability Assessment	44

ANNEX F: TOWN OF CANANDAIGUA

JURISDICTION PROFILE

OVERVIEW

The Town of Canandaigua is located in Ontario County, New York, with a population just over 1,600. According to the United States Census Bureau, the town has a total area of 62.53 square miles, of which 56.80 square miles is land and 5.74 square miles, or 9.04%, is water. The town surrounds the City of Canandaigua at the north end of Canandaigua Lake, one of the figure lakes. It is approximately 30 miles southeast of Rochester and is served by the Greater Rochester International Airport. Conjoined U.S. Route 20 and NY State Route 5 cross the north part of the town. Figure F-1 shows the general location of the Town of Canandaigua.

TOWN OF CANANDAIGUA CONTACT INFORMATION

Name: Jared Simpson

Title: Town Supervisor

Phone: (585) 377-4733

Address: 5440 Route 5 & 20 West,
Canandaigua, NY 14424

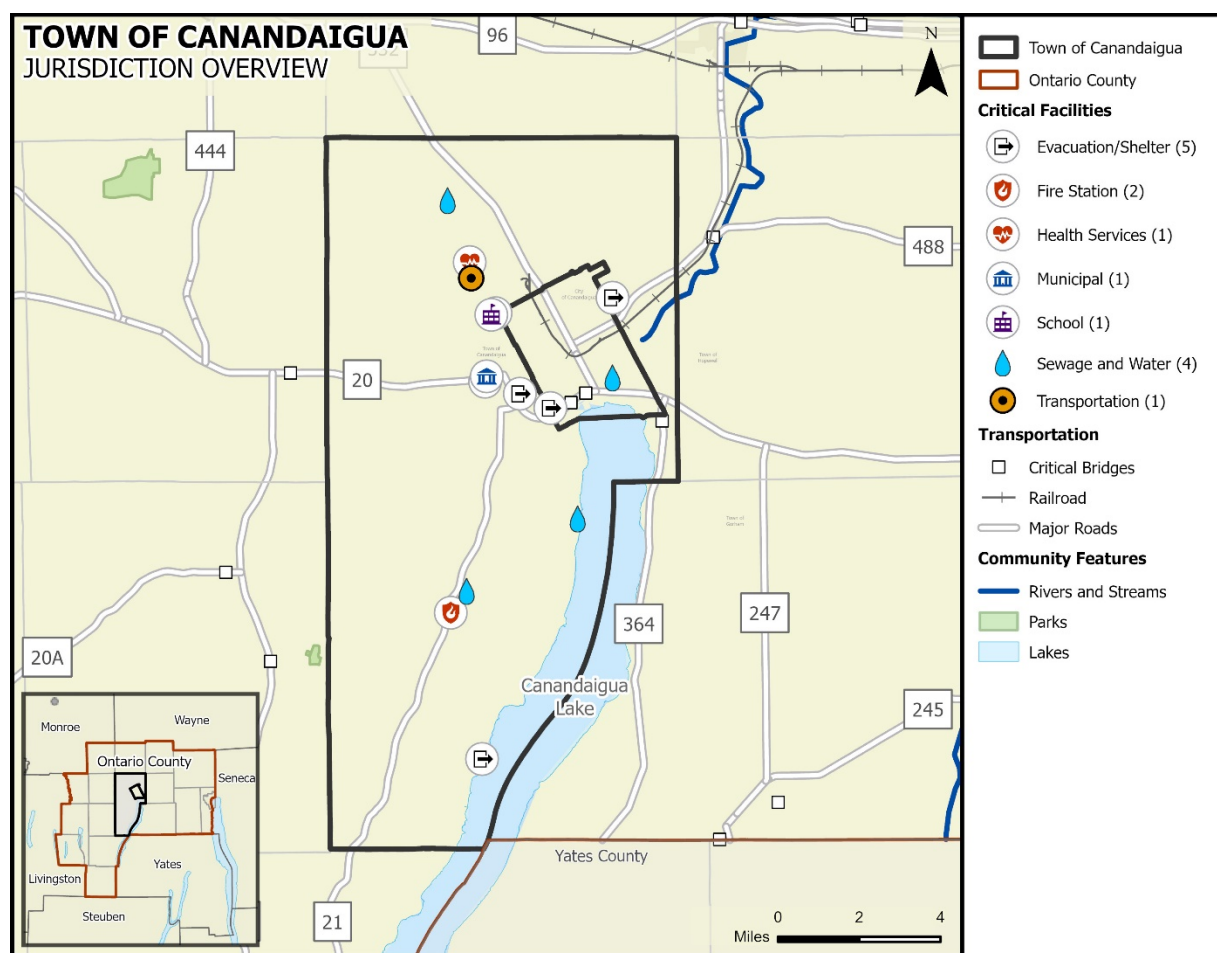
Email: jsimpson@townofcanandaigua.org

NOTE TO THE REVIEWER

It is noted that the Town of Canandaigua and the City of Canandaigua are not listed separately in the NCEI. The NCEI is the most reliable source for historical storm event data. While the plan incorporates local and team input for historical events, for the purposes of this evaluation, both jurisdictions will be evaluated as equal entities with similar exposure and vulnerability due to their close proximity.

ANNEX F: TOWN OF CANANDAIGUA

Figure F-1. Town of Canandaigua Planning Area¹



POPULATION AND DEMOGRAPHICS

According to the 2020 Census population count, the Town of Canandaigua has an official population of 11,109 residents, a 10.9 percent increase since the 2010 census. Table F-1 summarizes select characteristics of vulnerable or sensitive populations in the Town of Canandaigua using data from the U.S. Census Bureau 2021 American Community Survey (ACS) five-year estimates. Note that in some cases the 2021 ACS estimates may differ from the 2020 Census count; the ACS estimates are used throughout this section for consistency.²

Between official U.S. Census population counts, the estimate uses a formula based on new residential building permits and household size. It is simply an estimate and there are many variables involved in achieving an accurate estimation of people living in a given area at a given time.

¹ Map sources: ESRI OpenStreetMap (Custom: no labels), Census TIGER/LINE (2022), Ontario County Information Technology Department (2023)

² Source: <https://demographics.texas.gov/Data/Decennial/2010/>, <https://www.census.gov/en.html> and <https://www.census.gov/acs/www/data/data-tables-and-tools/data-profiles/2021/>

ANNEX F: TOWN OF CANANDAIGUA

Table F-1. Population Distribution for the Town of Canandaigua

JURISDICTION	TOTAL 2010 POPULATION	TOTAL 2021 POPULATION	PERCENTAGE CHANGE	ESTIMATED VULNERABLE OR SENSITIVE POPULATIONS ³		
				Youth (Under 5)	Elderly (Over 65)	Below Poverty Level
Town of Canandaigua	10,020	10,994	9.27%	353	2,241	902

POPULATION GROWTH

The official 2020 Town of Canandaigua population is 11,109. Overall, the Town of Canandaigua experienced an increase in population between 1990 and 2020 of 55.2 percent, or an increase by 3,949 residents. Between 2010 and 2020, the Town of Canandaigua experienced a population growth. Table F-2 provides historic change rates in the Town of Canandaigua.

Table F-2. Population Growth for the Town of Canandaigua, 1990-2020⁴

JURISDICTION	1990 ⁵	2000 ⁶	2010	2020	POP CHANGE 1990- 2020	PERCENT OF CHANGE	POP CHANGE 2010- 2020	PERCENT OF CHANGE
Town of Canandaigua	7,160	7,649	10,020	11,109	3,949	55.2%	1,089	10.9%

FUTURE DEVELOPMENT

To better understand how future growth and development in the Town of Canandaigua might affect hazard vulnerability, it is useful to consider population growth, occupied and vacant land, the potential for future development in hazard areas, and current planning and growth management efforts. This section includes an analysis of the projected population change, and economic impacts.

Population projections from 2010 to 2040 are listed in Table F-3, as provided by Cornell University's Program on Applied Demographics⁷. **This information is only available at the County level**; however, the population projection shows an increase in population density for the County, which would mean overall increase for the planning area.

³ The Estimated Vulnerable or Sensitive Populations are based off the 2021 American Community Survey 5-Year Estimates Data Profiles.

⁴ U.S. Census Bureau

⁵ Source: <https://www2.census.gov/library/publications/decennial/1990/cp-1/cp-1-34-2.pdf?#>

⁶ Source: <https://www2.census.gov/library/publications/2003/dec/phc-3-34.pdf>

⁷ Source: <https://pad.human.cornell.edu/counties/projections.cfm>

ANNEX F: TOWN OF CANANDAIGUA

Table F-3. Ontario County Population Projections

LAND AREA (SQ MI)	2010		2020		2030		2040	
	Population							
	Total Number	Density (Land Area, SQ MI)	Total Number	Density (Land Area, SQ MI)	Total Number	Density (Land Area, SQ MI)	Total Number	Density (Land Area, SQ MI)
644	107,931	167.59	111,349	172.90	114,374	177.60	114,770	178.21

PLAN MAINTENANCE

The Ontario County Hazard Mitigation Plan Update provides explanation on how each participating jurisdiction will be involved in implementing, evaluating, and enhancing the Plan over time. Please see Section 27 of this Plan for additional information regarding plan maintenance for the entire planning area.

Periodic revisions of the Plan are required to ensure that goals, objectives, and mitigation actions are kept current. When the plan is discussed in these sections it includes the risk assessment and mitigation actions as a part of the monitoring, evaluating, updating and review process. Revisions may be required to ensure the Plan remains in compliance with federal and state statutes and regulations. Table F-4 indicates the department and title of the party responsible for Plan monitoring, evaluating, updating, and review of the Plan.

Table F-4. Team Member Responsible for Plan Monitoring, Evaluating, Updating, and Review of the Plan

JURISDICTION	TITLE
Town of Canandaigua	Town Supervisor

PUBLIC PARTICIPATION

A series of public meetings were held throughout the Ontario County planning area to collect public and stakeholder input. Topics of discussion included the purpose of hazard mitigation, discussion of the planning process, and types of natural hazards. In addition, a public survey was developed to solicit public input during the planning process from citizens and stakeholders and to obtain data regarding the identification of any potential hazard mitigation actions or problem areas. The survey was promoted by local officials and a link to the survey was posted on the Town of Canandaigua's website. A total of 8 surveys were completed for the Town of Canandaigua. Additional meeting documentation and survey results can be viewed in Appendix E and Appendix B, respectively.

The draft Plan was made available to the general public for review and comment on Ontario County's website for 30 days. To ensure opportunities are given to all citizens including those without internet access, a paper copy of the draft plan annexes was also available at municipal offices and public library locations with a comment form that included an email and phone number for the public to provide feedback. Refer to Section 2 for additional information on public involvement in the planning process.

ANNEX F: TOWN OF CANANDAIGUA

Public input was an integral part of the preparation of this Plan and will continue to be essential for Plan updates. The public will be directly involved in the annual evaluation, monitoring, reviews and cyclical updates. Changes or suggestions to improve or update the Plan will provide opportunities for additional public input. The public can review the Plan on the Town of Canandaigua's website, where officials and the public are invited to provide ongoing feedback, via email.

The Planning team is responsible for notifying stakeholders and community members on an annual basis and maintaining the Plan. Media, including local newspaper and radio stations, will be used to notify the public of any maintenance or periodic review activities during the implementation, monitoring, and evaluation phases. Additionally, local news media will be contacted to cover information regarding Plan updates, status of grant applications, and project implementation. Local and social media outlets, such as Facebook and X (formerly known as Twitter), will keep the public and stakeholders apprised of potential opportunities to fund and implement mitigation projects identified in the Plan.

ANNEX F: TOWN OF CANANDAIGUA

HAZARD PROFILES

DAM FAILURE

The Town of Canandaigua is not profiling dam failure. The Town of Canandaigua does not own any dams and is not located in any estimated dam inundation zones. Dam failure has not impacted the community in the past and is not anticipated to impact the community in the future. Any localized flooding the community may experience due to a dam breach is addressed in the flood hazard profile. Therefore, this hazard does not require further analysis.

ANNEX F: TOWN OF CANANDAIGUA

DROUGHT

HAZARD DESCRIPTION, LOCATION, EXTENT, & HISTORICAL OCCURRENCES

The Ontario County Hazard Mitigation Plan Update provides a hazard description, location, and extent of the drought hazard for each participating jurisdiction (Section 6). Drought conditions are not confined to specific geographic boundaries and are considered similar for all participating jurisdictions throughout the planning area. Historical drought data for the County, including the Town of Canandaigua, are provided on a county-wide basis per the NCEI database. Therefore, all historical events are listed in Section 6 of the Plan Update.

PROBABILITY OF FUTURE EVENTS

According to historical records for the Ontario County planning area, the Town of Canandaigua can expect to experience a drought event approximately once every one to two years. This frequency supports a “Highly Likely” probability of future events.

VULNERABILITY AND IMPACT

While the entirety of the Ontario County planning area, including the Town of Canandaigua, is exposed to drought events, existing buildings, infrastructure, and critical facilities are not likely to sustain significant damage from these events. However, drought impacts are mostly experienced in water shortages, breaks in water lines, or crop and livestock losses on agricultural lands and typically have minimal impact on buildings.

The Town of Canandaigua planning team members identified critical facilities as assets that are considered the most important to the planning area and are susceptible to a range of potential hazard impacts caused by drought events. Drought impacts to critical facilities are similar across the entire planning area and are listed in detail in the drought hazard profile (Section 6). The following critical facilities would be vulnerable to drought events in the Town of Canandaigua:

Table F-5. Critical Facilities at Risk

JURISDICTION	CRITICAL FACILITIES
Town of Canandaigua	1 Energy Utility Facility, 5 Evacuation Shelters, 2 Fire Stations, 1 Health Service Facility, 1 Municipal Building, 1 School, 4 Sewage and Water Facilities, 1 Transportation (Air) Facility, 2 transportation (Roads and Routes) Facilities

The population over 65 in the Town of Canandaigua is estimated at 20 percent of the Town’s total population and children under the age of 5 are estimated at 3 percent, or an estimated total of 2,594 potentially vulnerable residents in the Town of Canandaigua based on age. In addition, an estimated 8 percent of the Town of Canandaigua’s population live below the poverty level (Table F-6).

Table F-6. Populations at Greater Risk

JURISDICTION	POPULATION 65 AND OLDER	POPULATION UNDER 5	POPULATION BELOW POVERTY LEVEL
Town of Canandaigua	2,241	353	902

Historic losses are reported on a county-wide basis. Please see Section 6 of this Plan for additional information on historical and annualized losses for the entire planning area.

ANNEX F: TOWN OF CANANDAIGUA

EXTREME COLD

HAZARD DESCRIPTION, LOCATION, EXTENT, & HISTORICAL OCCURRENCES

The Ontario County Hazard Mitigation Plan Update provides a hazard description, location, and extent of the extreme cold hazard for each participating jurisdiction (Section 7). Extreme cold events are not confined to specific geographic boundaries and are considered similar for all participating jurisdictions throughout the planning area. For the purposes of evaluating this hazard, the following NCEI reporting categories are included under extreme cold: cold/wind chill, extreme cold, frost/freeze, and winter weather. Historical extreme cold data for the County, including the Town of Canandaigua, are provided on a county-wide basis per the NCEI database. Therefore, all historical events are listed in Section 7 of the Plan Update.

PROBABILITY OF FUTURE EVENTS

According to historical records for the Ontario County planning area, the Town of Canandaigua can expect to experience an extreme cold event approximately once every year. This frequency supports a “Highly Likely” probability of future events.

VULNERABILITY AND IMPACT

While the entirety of the Ontario County planning area, including the Town of Canandaigua, is exposed to extreme cold events, existing buildings, infrastructure, and critical facilities are not likely to sustain significant damage from these events. However, the Town of Canandaigua planning team members identified the following critical facilities (Table F-7) as assets that are considered the most important to the planning area. These facilities are susceptible to a range of impacts caused by this hazard. Extreme cold impacts to critical facilities are similar across the entire planning area and are listed in detail in the extreme cold hazard profile (Section 7). The following critical facilities would be vulnerable to extreme cold events in the Town of Canandaigua:

Table F-7. Critical Facilities at Risk

JURISDICTION	CRITICAL FACILITIES
Town of Canandaigua	1 Energy Utility Facility, 5 Evacuation Shelters, 2 Fire Stations, 1 Health Service Facility, 1 Municipal Building, 1 School, 4 Sewage and Water Facilities, 1 Transportation (Air) Facility, 2 transportation (Roads and Routes) Facilities

The population over 65 in the Town of Canandaigua is estimated at 20 percent of the Town’s total population and children under the age of 5 are estimated at 3 percent, or an estimated total of 2,594 potentially vulnerable residents in the Town of Canandaigua based on age. In addition, an estimated 8 percent of the Town of Canandaigua’s population live below the poverty level (Table F-8).

Table F-8. Populations at Greater Risk

JURISDICTION	POPULATION 65 AND OLDER	POPULATION UNDER 5	POPULATION BELOW POVERTY LEVEL
Town of Canandaigua	2,241	353	902

Historic losses are reported on a county-wide basis. Please see Section 7 of this Plan for additional information on historical and annualized losses for the entire planning area.

ANNEX F: TOWN OF CANANDAIGUA

EXTREME HEAT

HAZARD DESCRIPTION, LOCATION, EXTENT, & HISTORICAL OCCURRENCES

The Ontario County Hazard Mitigation Plan Update provides a hazard description, location, and extent of the extreme heat hazard for each participating jurisdiction (Section 8). Extreme heat events are not confined to specific geographic boundaries and are considered similar for all participating jurisdictions throughout the planning area. Historical extreme heat data for the County, including the Town of Canandaigua, are provided on a county-wide basis per the NCEI database. Therefore, all historical events are listed in Section 8 of the Plan Update.

PROBABILITY OF FUTURE EVENTS

According to historical records for the Ontario County planning area, the Town of Canandaigua can expect to experience an extreme heat event approximately once every year. This frequency supports a “Likely” probability of future events.

VULNERABILITY AND IMPACT

While the entirety of the Ontario County planning area, including the Town of Canandaigua, is exposed to extreme heat events, existing buildings, infrastructure, and critical facilities are not likely to sustain significant damage from these events. However, the Town of Canandaigua planning team members identified the following critical facilities (Table F-9) as assets that are considered the most important to the planning area. These facilities are susceptible to a range of impacts caused by this hazard. Extreme heat impacts to critical facilities are similar across the entire planning area and are listed in detail in the extreme heat hazard profile (Section 8). The following critical facilities would be vulnerable to extreme heat events in the Town of Canandaigua:

Table F-9. Critical Facilities at Risk

JURISDICTION	CRITICAL FACILITIES
Town of Canandaigua	1 Energy Utility Facility, 5 Evacuation Shelters, 2 Fire Stations, 1 Health Service Facility, 1 Municipal Building, 1 School, 4 Sewage and Water Facilities, 1 Transportation (Air) Facility, 2 transportation (Roads and Routes) Facilities

The population over 65 in the Town of Canandaigua is estimated at 20 percent of the Town’s total population and children under the age of 5 are estimated at 3 percent, or an estimated total of 2,594 potentially vulnerable residents in the Town of Canandaigua based on age. In addition, an estimated 8 percent of the Town of Canandaigua’s population live below the poverty level (Table F-10).

Table F-10. Populations at Greater Risk

JURISDICTION	POPULATION 65 AND OLDER	POPULATION UNDER 5	POPULATION BELOW POVERTY LEVEL
Town of Canandaigua	2,241	353	902

Historic losses are reported on a county-wide basis. Please see Section 8 of this Plan for additional information on historical and annualized losses for the entire planning area.

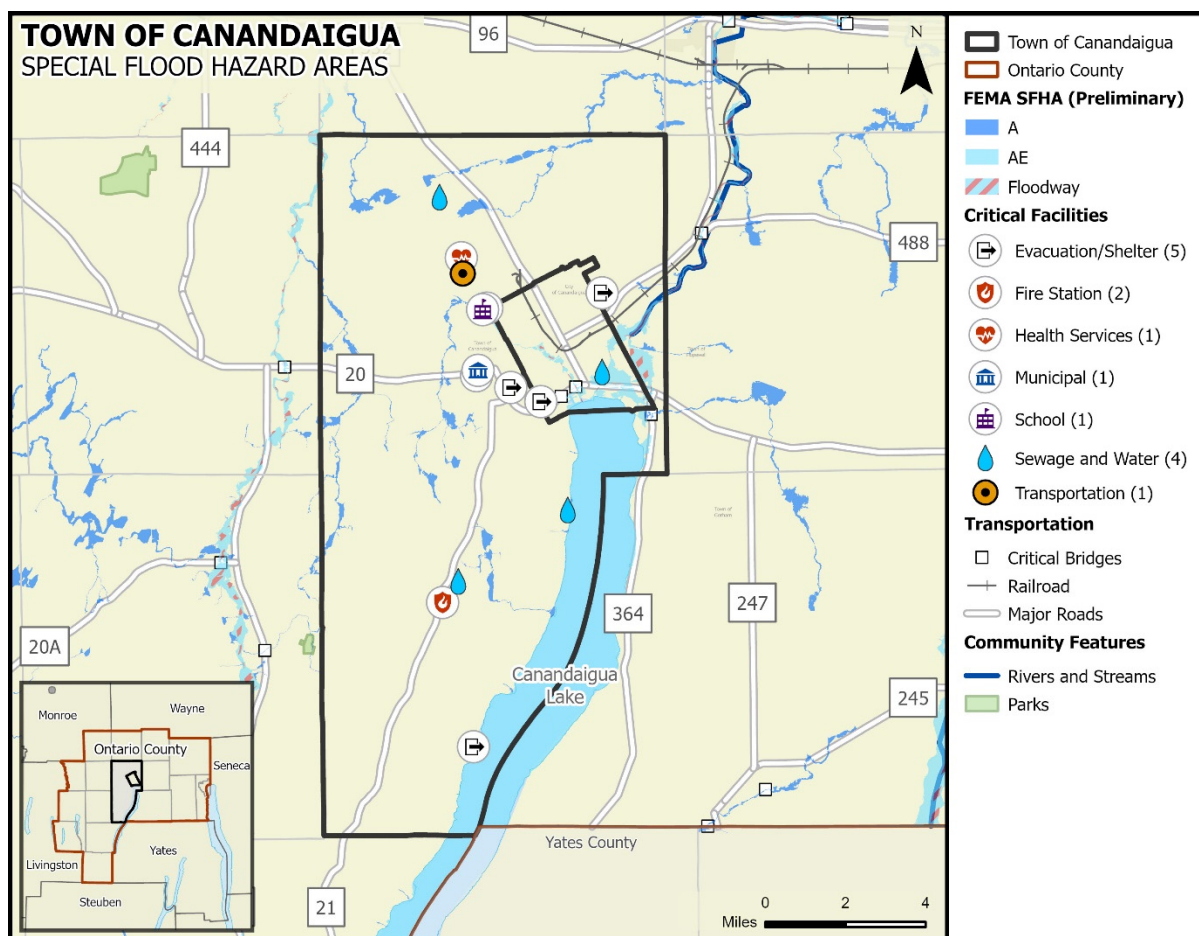
ANNEX F: TOWN OF CANANDAIGUA

FLOOD

HAZARD DESCRIPTION, LOCATION, & EXTENT

The Ontario County Hazard Mitigation Plan Update provides a hazard description and extent of the flood hazard for the entire Ontario County planning area in Section 9. Flood hazard delineations with elevations are available in portions of the Town of Canandaigua, some areas feature flood hazard boundary maps only with no flood elevations. The location of estimated flood zones for the Town of Canandaigua, based on the Digital Flood Insurance Rate Maps (DFIRM) from FEMA is illustrated in Figure F-2.

Figure F-2. Estimated Flood Zones in the Town of Canandaigua⁸



HISTORICAL OCCURRENCES

Table F-11 provides the historical occurrences of flood events for the Town of Canandaigua according to the Storm Prediction Center (NOAA), National Centers for Environmental Information (NCEI) database for Ontario County. From January 1996 through to August 2023, 22 flood events were known to have impacted the Town of Canandaigua, based upon NCEI records. Flood events are often reported on a county-wide basis, or under-reported for individual municipalities, particularly in smaller communities.

⁸ Map sources: ESRI OpenStreetMap (Custom: no labels), Census TIGER/LINE (2022), Ontario County Information Technology Department (2023), Ontario County Preliminary Flood Data (2023)

ANNEX F: TOWN OF CANANDAIGUA

Table F-11. Historical Flood Events, 1996-2023⁹

JURISDICTION	DATE	DEATHS	INJURIES	PROPERTY DAMAGE	CROP DAMAGE
City and Town of Canandaigua	10/19/1996	0	0	\$93,547	\$0
	10/20/1996	0	0	\$93,547	\$0
	7/31/2000	0	0	\$42,849	\$0
	7/31/2000	0	0	\$42,849	\$0
	5/13/2004	0	0	\$15,662	\$0
	5/14/2004	0	0	\$7,831	\$0
	6/28/2010	0	0	\$40,764	\$0
	7/9/2010	0	0	\$13,585	\$0
	7/23/2017	0	0	\$60,495	\$0
	6/12/2023	0	0	\$0	\$0
	7/1/2023	0	0	\$0	\$0
	7/9/2023	0	0	\$501,000	\$0
Totals		0	0	\$912,129	

Based on the list of historical flood events for the Town of Canandaigua, 3 reported events have occurred since the 2018 Plan.

PROBABILITY OF FUTURE EVENTS

While some incidents may be reported at the local municipal level, as indicated above, County level events provide a more robust risk assessment for each participating jurisdiction. According to historical records for the Ontario County planning area, the Town of Canandaigua can expect to experience approximately one to two flood events every year. This frequency supports a “Highly Likely” probability of future events.

VULNERABILITY AND IMPACT

The Town of Canandaigua planning team members identified critical facilities as assets that are considered the most important to the planning area and are susceptible to a range of potential impacts from a variety of natural hazards, including those facilities located in the regulatory floodplain. Table F-12 includes the critical facilities in the Town of Canandaigua located in the floodplain. Impacts to critical facilities located in the floodplain are listed in detail in Section 9.

Table F-12. Critical Facilities in the Floodplain

JURISDICTION	CRITICAL FACILITY	FACILITY TYPE	FLOODPLAIN (1% or 0.2%)
Town of Canandaigua	Outhouse Park	Evacuation center	1%
	County Road Canandaigua (West Lake Road)	Transportation	1%

⁹ Events are reported from January 1996 through August 2023; values are in 2023 dollars.

ANNEX F: TOWN OF CANANDAIGUA

JURISDICTION	CRITICAL FACILITY	FACILITY TYPE	FLOODPLAIN (1% or 0.2%)
	State Route 364 Canandaigua (East Lake Road)	Transportation	1%

Historic loss estimates due to flooding are presented in Table F-13 below.

Table F-13. Potential Annualized Losses, 1996-2023¹⁰

JURISDICTION	NUMBER OF EVENTS	PROPERTY & CROP LOSS	ANNUAL LOSS ESTIMATES
Town of Canandaigua	22	\$912,129	\$33,168

While all citizens are at risk of the impacts of a flood, forced relocation and disaster recovery drastically impacts low-income residents who lack the financial means to travel, afford a long-term stay away from home, and to rebuild or repair their homes. An estimated 8 percent of the Town of Canandaigua’s population live below the poverty level (Table F-14). While warning times for these type of hazard events should be substantial enough for individuals to seek shelter, individuals who work and recreate outside are also vulnerable to potential impacts of a flood event.

Table F-14. Populations at Greatest Risk

JURISDICTION	POPULATION BELOW POVERTY LEVEL
Town of Canandaigua	902

The severity of a flooding event varies depending on the relative risk to citizens and structures located within each jurisdiction. Table F-15 depicts the level of impact for the Town of Canandaigua.

Table F-15. Town of Canandaigua Impact

JURISDICTION	IMPACT	DESCRIPTION
Town of Canandaigua	Limited	The Town of Canandaigua could have limited property damage with critical facilities typically shut down for 24 hours or less, and less than 10 percent of property would be destroyed or damaged.

NATIONAL FLOOD INSURANCE PROGRAM (NFIP) PARTICIPATION

The Town of Canandaigua currently participates in the National Flood Insurance Program and is in good standing. The community has adopted a flood damage prevention ordinance that includes the minimum requirements for development in special flood hazard areas.

NFIP COMPLIANCE AND MAINTENANCE

The Town of Canandaigua has developed mitigation actions that relate to NFIP participation, maintenance or compliance. Compliance and maintenance actions can be found in Section 26. Flooding was identified by the Town of Canandaigua as a moderate-risk hazard during hazard

¹⁰ Historical events are reported from January 1996 through August 2023; values are in 2023 dollars.

ANNEX F: TOWN OF CANANDAIGUA

ranking activities at the Risk Assessment Workshop. Many of the mitigation actions for the jurisdiction were developed with flood mitigation in mind.

The Town of Canandaigua Code Enforcement Officer is designated as the local floodplain administrator and is responsible for maintaining compliance in the NFIP through development regulations as outlines in the community flood damage prevention ordinance. The floodplain administrator is responsible for

- Permitting and inspecting construction activity in the floodplain
- Ensuring conformance with floodplain permit requirements
- Enforcing floodplain regulations
- Identifying Substantially Damaged structures and ensuring compliance during reconstruction
- Identifying Substantial Improvements in proposed development permit applications and ensuring compliance during construction
- Providing floodplain map and flood insurance information to the public
- Coordinating with FEMA to maintain the community's participation in the NFIP
- Keeping records of construction in the floodplain

Table F-16 provides the most recent CAC/CAV dates along with the current status for the jurisdiction.

Table F-16. Compliance History

JURISDICTION	DATE OF LAST CAC	DATE OF LAST CAV	CURRENT NFIP STATUS	POLICIES IN FORCE
Town of Canandaigua	12/3/2009 ¹¹	5/2/2017	Good Standing	0

REPETITIVE LOSS

Table F-17 shows repetitive loss and severe repetitive loss properties for the Town of Canandaigua.

Table F-17. Repetitive Loss and Severe Repetitive Loss Properties

JURISDICTION	BUILDING TYPE	NUMBER OF LOSSES
Town of Canandaigua	2-4 Family	0
	Assumed Condo	0
	Non-Residential	0
	Other Residential	0
	Single Family*	6

¹¹ New CAV/CAC planned for FY23.

ANNEX F: TOWN OF CANANDAIGUA

HAIL

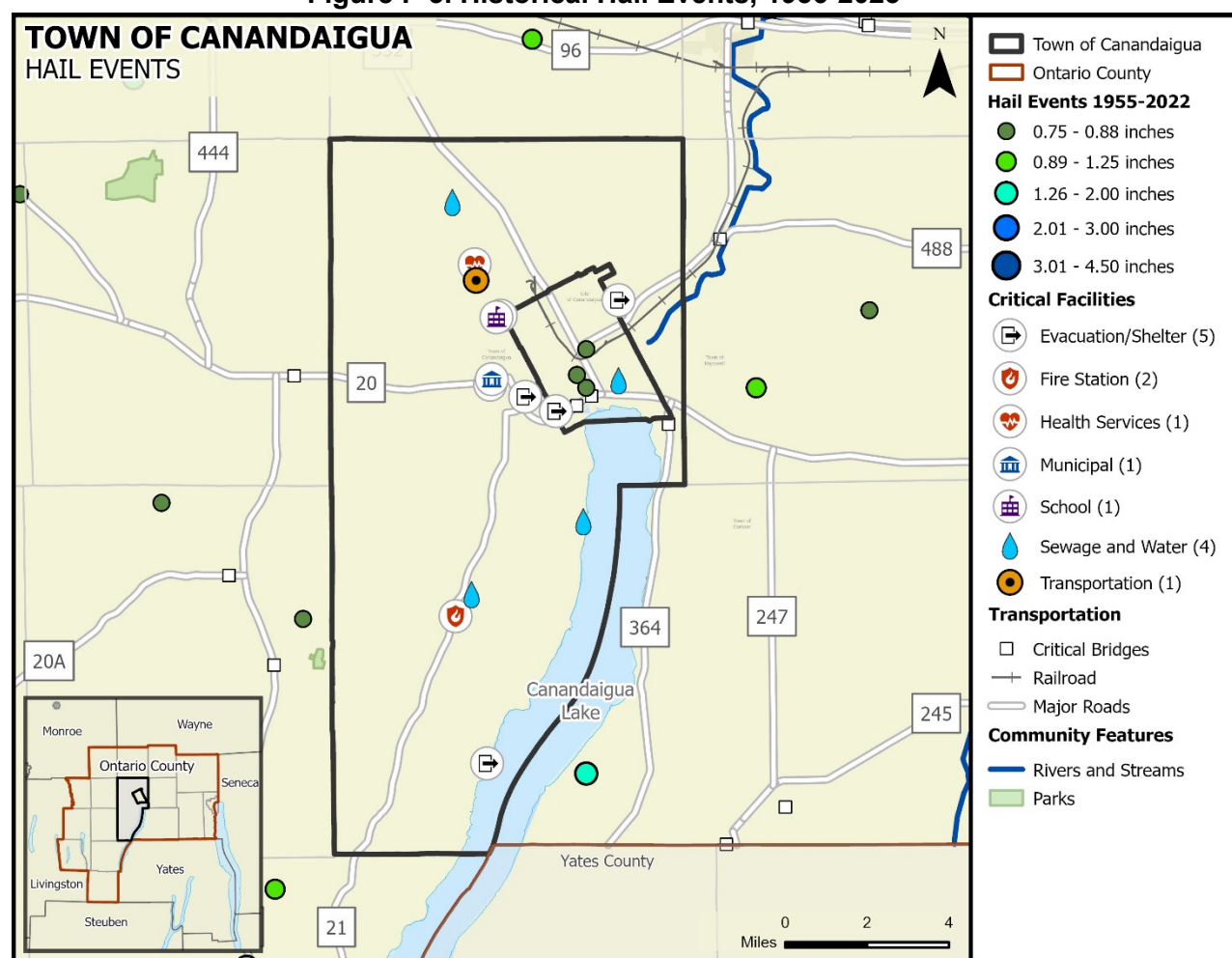
HAZARD DESCRIPTION, LOCATION, & EXTENT

The Ontario County Hazard Mitigation Plan Update provides a hazard description, location, and extent of the hail hazard for each participating jurisdiction (Section 10). Hail events are not confined to specific geographic boundaries and are considered similar for all participating jurisdictions throughout the planning area.

HISTORICAL OCCURRENCES

Historical evidence shown in Figure F-3 demonstrates that the Town of Canandaigua is vulnerable to hail events overall. Historical events with reported damages, injuries, or fatalities are shown in Table F-18. A total of 4 reported historical hail events impacted the Town of Canandaigua between January 1956 through August 2023; these events were reported to NCEI and NOAA databases and may not represent all hail events to have occurred during the past 67.5 years. Only those events for the Town of Canandaigua with latitude and longitude available were plotted (Figure F-3).

Figure F-3. Historical Hail Events, 1956-2023¹²



¹² Map sources: ESRI OpenStreetMap (Custom: no labels), Census TIGER/LINE (2022), Ontario County Information Technology Department (2023), NOAA Storm Events Database (2023)

ANNEX F: TOWN OF CANANDAIGUA

Table F-18. Historical Hail Events, 1956-2023¹³

JURISDICTION	DATE	MAGNITUDE (Inches)	DEATHS	INJURIES	PROPERTY DAMAGE	CROP DAMAGE
City and Town of Canandaigua	10/13/1999	0.75	0	0	\$26,412	\$0
	5/13/2004	0.75	0	0	\$7,831	\$0
	7/25/2006	0.75	0	0	\$11,643	\$0
	5/14/2017	0.75	0	0	\$0	\$0
TOTALS		(Max Extent)	0	0	\$45,886	\$0

Based on the list of historical hail events for the Town of Canandaigua, no reported events have occurred since the 2018 Plan.

PROBABILITY OF FUTURE EVENTS

Historical hail events are often reported on a county-wide basis. While some incidents may be reported at the local municipal level, as indicated above, county level events provide a more robust risk assessment for each participating jurisdiction. According to historical records for the Ontario County planning area, the Town of Canandaigua can expect a hail event approximately every one to two years. This frequency supports a “Highly Likely” probability of future events.

VULNERABILITY AND IMPACT

The Town of Canandaigua planning team members identified the following critical facilities as assets that are considered the most important to the planning area. These facilities are susceptible to a range of impacts caused by hailstorm events. Hail impacts to critical facilities are similar across the entire planning area and are listed in detail in the hail hazard profile (Section 10).

Table F-19. Critical Facilities at Risk

JURISDICTION	CRITICAL FACILITIES
Town of Canandaigua	1 Energy Utility Facility, 5 Evacuation Shelters, 2 Fire Stations, 1 Health Service Facility, 1 Municipal Building, 1 School, 4 Sewage and Water Facilities, 1 Transportation (Air) Facility, 2 transportation (Roads and Routes) Facilities

The U.S. Census data indicates a total of 161 (3 percent of total housing stock) manufactured homes located in the Town of Canandaigua. In addition, 29 percent (approximately 1,460 structures) of the housing structures in the Town of Canandaigua were built before 1980. These structures would typically be built to lower or less stringent construction standards than newer construction and may be more susceptible to damages during significant hail events.

Table F-20. Structures at Greater Risk

JURISDICTION	MANUFACTURED HOMES	SFR STRUCTURES BUILT BEFORE 1980
Town of Canandaigua	161	1,490

¹³ Historical events are reported from January 1956 through August 2023. Only recorded events with fatalities, injuries, and/or damages are listed; values are in 2023 dollars.

ANNEX F: TOWN OF CANANDAIGUA

While all citizens are at risk of the impacts of hail, forced relocation and disaster recovery drastically impacts low-income residents who lack the financial means to travel, afford a long-term stay away from home, and to rebuild or repair their homes. An estimated 8 percent of the Town of Canandaigua’s population live below the poverty level (Table F-21).

Table F-21. Populations at Greatest Risk

JURISDICTION	POPULATION BELOW POVERTY LEVEL
Town of Canandaigua	902

Overall, the total loss estimate of property and crops in the Town of Canandaigua is \$45,886 with an average annualized loss of \$680. Based on historic loss and damages, the impact of hail damages on the Town of Canandaigua can be considered “Limited” severity of impact, meaning minor quality of life lost, critical facilities and services shut down for 24 hours or less, and less than 10 percent of property destroyed or with major damage.

Table F-22. Estimated Annualized Losses

JURISDICTION	TOTAL PROPERTY & CROP LOSS	ANNUAL LOSS ESTIMATE
Town of Canandaigua	\$45,886	\$680

ANNEX F: TOWN OF CANANDAIGUA

ICE STORM

HAZARD DESCRIPTION, LOCATION, EXTENT, & HISTORICAL OCCURRENCES

The Ontario County Hazard Mitigation Plan Update provides a hazard description, location, and extent of the ice storm hazard for each participating jurisdiction (Section 11). Ice storm events are not confined to specific geographic boundaries and are considered similar for all participating jurisdictions throughout the planning area. For the purposes of evaluating this hazard, the following NCEI reporting categories are included under ice storm: sleet, freezing fog, and ice storm. Historical ice storm data for the county, including the Town of Canandaigua, are provided on a county-wide basis per the NCEI database. Therefore, all historical events are listed in Section 11 of the Plan Update.

PROBABILITY OF FUTURE EVENTS

According to historical records for the Ontario County planning area, the Town of Canandaigua can expect to experience an ice storm event approximately once every five years. This frequency supports an “Occasional” probability of future events.

VULNERABILITY AND IMPACT

While the entirety of the Ontario County planning area, including the Town of Canandaigua, is exposed to ice storm events, existing buildings, infrastructure, and critical facilities are not likely to sustain significant damage from these events. However, the Town of Canandaigua planning team members identified the following critical facilities (Table F-23) as assets that are considered the most important to the planning area. These facilities are susceptible to a range of impacts caused by this hazard. Ice storm impacts to critical facilities are similar across the entire planning area and are listed in detail in the ice storm hazard profile (Section 11). The following critical facilities would be vulnerable to ice storm events in the Town of Canandaigua:

Table F-23. Critical Facilities at Risk

JURISDICTION	CRITICAL FACILITIES
Town of Canandaigua	1 Energy Utility Facility, 5 Evacuation Shelters, 2 Fire Stations, 1 Health Service Facility, 1 Municipal Building, 1 School, 4 Sewage and Water Facilities, 1 Transportation (Air) Facility, 2 transportation (Roads and Routes) Facilities

The population over 65 in the Town of Canandaigua is estimated at 20 percent of the Town’s total population and children under the age of 5 are estimated at 3 percent, or an estimated total of 2,594 potentially vulnerable residents in the Town of Canandaigua based on age. In addition, an estimated 8 percent of the Town of Canandaigua’s population live below the poverty level (Table F-24).

Table F-24. Populations at Greater Risk

JURISDICTION	POPULATION 65 AND OLDER	POPULATION UNDER 5	POPULATION BELOW POVERTY LEVEL
Town of Canandaigua	2,241	353	92

Historic losses are reported on a county-wide basis. Please see Section 11 of this Plan for additional information on historical and annualized losses for the entire planning area.

ANNEX F: TOWN OF CANANDAIGUA

LANDSLIDE

HAZARD DESCRIPTION, LOCATION, EXTENT, & HISTORICAL OCCURRENCES

The Ontario County Hazard Mitigation Plan Update provides a hazard description, location and extent of the landslide hazard for all participating jurisdictions prone to landslides (Section 12). The entire planning area is primarily at low risk for potential landslides. However, the areas surrounding Honeoye Lake are at a slightly greater risk for landslides. According to the New York State Hazard Mitigation Plan, the entire population in the Town of Canandaigua is at a low risk of incidence and low risk for landslide susceptibility (0-1.5%). Since 1996, the entire Ontario County planning area, including the Town of Canandaigua, has had no reported incidents and no known damages due to landslides.

PROBABILITY OF FUTURE EVENTS

Based on available records of historic events there are no known historic events of landslide in the Town of Canandaigua over the 27.5-year reporting period which provides a probability of one event every ten years or more. This frequency supports an “Unlikely” probability of future events for the Town of Canandaigua.

VULNERABILITY AND IMPACT

According to the New York State Hazard Mitigation Plan, the entire population in the Ontario County planning area is at a low risk of incidence. The only known area slightly susceptible to landslide within the planning area is along the banks of the Honeoye Lake. There have been no known impacts to structures or infrastructure in the area due to landslides and there are no critical facilities located in the areas considered at slightly greater risk. The lack of historical events or impacts supports a “Limited” severity of impact meaning injuries and/or illnesses are treatable with first aid, shutdown of facilities and services for 24 hours or less, and less than 10 percent of property is destroyed or with major damage.

ANNEX F: TOWN OF CANANDAIGUA

LIGHTNING

HAZARD DESCRIPTION, LOCATION, & EXTENT

The Ontario County Hazard Mitigation Plan Update provides a hazard description, location and extent of the lightning hazard for each participating jurisdiction (Section 13). Lightning events are not confined to specific geographic boundaries and are considered similar for all participating jurisdictions throughout the planning area.

HISTORICAL OCCURRENCES

There have been 2 recorded lightning events in the Town of Canandaigua from January 1996 through August 2023. The NCEI is a national data source organized under the National Oceanic and Atmospheric Administration and considered a reliable resource for hazards. However, historical lightning events have only been reported as independent events to the NCEI in recent years and remain widely underreported. The flash density for the planning area along with input from local team members was utilized in evaluating the jurisdiction’s risk. The flash density for the entire planning area indicates regular occurrences of lightning events that simply are not being reported.

Table F-25. Historical Lightning Events, 1996-2023¹⁴

JURISDICTION	DATE	DEATHS	INJURIES	PROPERTY DAMAGE	CROP DAMAGE
City and Town of Canandaigua	8/25/2011	0	0	\$32,683	\$0
	5/29/2016	0	0	\$43,150	\$0
TOTALS		0	0	\$75,833	

Based on the list of historical lightning events for the Town of Canandaigua, there have been no reported events since the 2018 Plan.

PROBABILITY OF FUTURE EVENTS

Based on historical records and input from the planning team the probability of occurrence for future lightning events in the Town of Canandaigua is considered “Highly Likely”, or an event probable in the next year. The planning team stated that lightning occurs regularly in the area.

VULNERABILITY AND IMPACT

The Town of Canandaigua planning team members identified the following critical facilities as assets that are considered the most important to the planning area. These facilities are susceptible to a range of impacts caused by lightning events. Lightning impacts to critical facilities are similar across the entire planning area and are listed in detail in the lightning hazard profile (Section 13).

Table F-26. Critical Facilities at Risk

JURISDICTION	CRITICAL FACILITIES
Town of Canandaigua	1 Energy Utility Facility, 5 Evacuation Shelters, 2 Fire Stations, 1 Health Service Facility, 1 Municipal Building, 1 School, 4 Sewage and Water Facilities, 1 Transportation (Air) Facility, 2 transportation (Roads and Routes) Facilities

¹⁴ Historical events are reported from January 1996 through June 2023; values are in 2023 dollars.

ANNEX F: TOWN OF CANANDAIGUA

While all citizens are at risk to the impacts of lightning, forced relocation and disaster recovery drastically impacts low-income residents who lack the financial means to travel, afford a long-term stay away from home, and to rebuild or repair their homes. An estimated 8 percent of the Town of Canandaigua’s population live below the poverty level (Table F-27).

Table F-27. Populations at Greatest Risk

JURISDICTION	POPULATION BELOW POVERTY LEVEL
Town of Canandaigua	902

Historical losses and damages as a result of lightning events can be considered “Limited” with injuries or illness treatable with first aid, critical facilities and services shut down for 24 hours or less, and less than 10 percent of property destroyed. Overall, the total loss estimate for the Town of Canandaigua (in 2023 dollars) is considered 75,833 with an average annualized loss of \$2,758 (Table F-28).

Table F-28. Potential Annualized Losses

JURISDICTION	TOTAL PROPERTY & CROP LOSS	ANNUAL LOSS ESTIMATE
Town of Canandaigua	\$75,833	\$2,758

ANNEX F: TOWN OF CANANDAIGUA

SNOW STORM

HAZARD DESCRIPTION, LOCATION, EXTENT, & HISTORICAL OCCURRENCES

The Ontario County Hazard Mitigation Plan Update provides a hazard description, location, and extent of the snow storm hazard for each participating jurisdiction (Section 14). Snow storm events are not confined to specific geographic boundaries and are considered similar for all participating jurisdictions throughout the planning area. For the purposes of evaluating this hazard, the following NCEI reporting categories are included under snow storm: blizzard, heavy snow, winter storm, and lake effect snow. Historical snow storm data for the County, including the Town of Canandaigua, are provided on a county-wide basis per the NCEI database. Therefore, all historical events are listed in Section 14 of the Plan Update.

PROBABILITY OF FUTURE EVENTS

According to historical records for the Ontario County planning area, the Town of Canandaigua can expect to experience a snow storm event approximately once every year. This frequency supports a “Highly Likely” probability of future events.

VULNERABILITY AND IMPACT

While the entirety of the Ontario County planning area, including the Town of Canandaigua, is exposed to snow storm events, existing buildings, infrastructure, and critical facilities are not likely to sustain significant damage from these events. However, the Town of Canandaigua planning team members identified the following critical facilities (Table F-29) as assets that are considered the most important to the planning area. These facilities are susceptible to a range of impacts caused by this hazard. Snow storm impacts to critical facilities are similar across the entire planning area and are listed in detail in the snow storm hazard profile (Section 14). The following critical facilities would be vulnerable to snow storm events in the Town of Canandaigua:

Table F-29. Critical Facilities at Risk

JURISDICTION	CRITICAL FACILITIES
Town of Canandaigua	1 Energy Utility Facility, 5 Evacuation Shelters, 2 Fire Stations, 1 Health Service Facility, 1 Municipal Building, 1 School, 4 Sewage and Water Facilities, 1 Transportation (Air) Facility, 2 transportation (Roads and Routes) Facilities

The population over 65 in the Town of Canandaigua is estimated at 20 percent of the Town’s total population and children under the age of 5 are estimated at 3 percent, or an estimated total of 2,594 potentially vulnerable residents in the Town of Canandaigua based on age. In addition, an estimated 8 percent of the Town of Canandaigua’s population live below the poverty level (Table F-30).

Table F-30. Populations at Greater Risk

JURISDICTION	POPULATION 65 AND OLDER	POPULATION UNDER 5	POPULATION BELOW POVERTY LEVEL
Town of Canandaigua	2,241	353	902

Historic losses are reported on a county-wide basis. Please see Section 14 of this Plan for additional information on historical and annualized losses for the entire planning area.

ANNEX F: TOWN OF CANANDAIGUA

TORNADO

HAZARD DESCRIPTION, LOCATION, & EXTENT

The Ontario County Hazard Mitigation Plan Update provides a hazard description, location and extent of the tornado hazard for each participating jurisdiction (Section 15). The risk of a tornado is not confined to specific geographic boundaries and the risk of an event is considered similar for all participating jurisdictions throughout the planning area.

HISTORICAL OCCURRENCES

According to the National Centers for Environmental Information (NCEI) Storm Events database, from January 1994 through August 2023, no tornado events are known to have impacted the Town of Canandaigua.

PROBABILITY OF FUTURE EVENTS

Historical tornado events are often reported on a county-wide basis, particularly when multiple smaller jurisdictions are impacted. While some incidents may be reported at the local municipal level, county level events provide a more robust risk assessment for each participating jurisdiction due to their similar geographic locations. According to historical records for the Ontario County planning area, the Town of Canandaigua can expect to experience a tornado event once every five years. This frequency supports an “Occasional” probability of future events.

VULNERABILITY AND IMPACT

The Town of Canandaigua planning team members identified the following critical facilities as assets that are considered the most important to the planning area. These facilities are susceptible to a range of impacts caused by tornado events. Tornado impacts to critical facilities are similar across the entire planning area and are listed in detail in the tornado hazard profile (Section 15).

Table F-31. Critical Facilities at Risk

JURISDICTION	CRITICAL FACILITIES
Town of Canandaigua	1 Energy Utility Facility, 5 Evacuation Shelters, 2 Fire Stations, 1 Health Service Facility, 1 Municipal Building, 1 School, 4 Sewage and Water Facilities, 1 Transportation (Air) Facility, 2 transportation (Roads and Routes) Facilities

According to the American Community Survey (ACS) five-year estimates for 2021, a total of 161 manufactured homes are located in the Town of Canandaigua (3 percent of total housing stock). In addition, 29 percent (approximately 1,490 structures) of the housing units were built before 1980. These structures would typically be built to lower or less stringent construction standards than newer construction and may be more susceptible to damage during tornado events.

Table F-32. Structures at Greater Risk

JURISDICTION	SFR STRUCTURES BUILT BEFORE 1980	MANUFACTURED HOMES
Town of Canandaigua	1,490	161

While all citizens are at risk to the impacts of a tornado event, forced relocation and disaster recovery drastically impacts low-income residents who lack the financial means to travel, afford a

ANNEX F: TOWN OF CANANDAIGUA

long-term stay away from home, and to rebuild or repair their homes. An estimated 8 percent of the Town of Canandaigua’s population live below the poverty level (Table F-33).

Table F-33. Populations at Greatest Risk

JURISDICTION	POPULATION BELOW POVERTY LEVEL
Town of Canandaigua	902

The total loss estimate due to tornado events is \$0, having an approximate annual loss estimate of \$0. Based on historic damages and best available data the impact of a tornado event on the Town of Canandaigua would be considered “Limited”, with injuries and illness treatable with first aid, critical facilities, and services shutdown for 24-hours or less and less than 10 percent of properties destroyed or with major damage.

Table F-34. Estimated Average Annual Losses

JURISDICTION	TOTAL PROPERTY & CROP LOSS	AVERAGE ANNUAL LOSS ESTIMATES
Town of Canandaigua	\$0	\$0

ANNEX F: TOWN OF CANANDAIGUA

Town of Canandaigua, had a “Low” FDRA Risk rating as of October 2023 (Section 16, Figure 16-2).

EXTENT

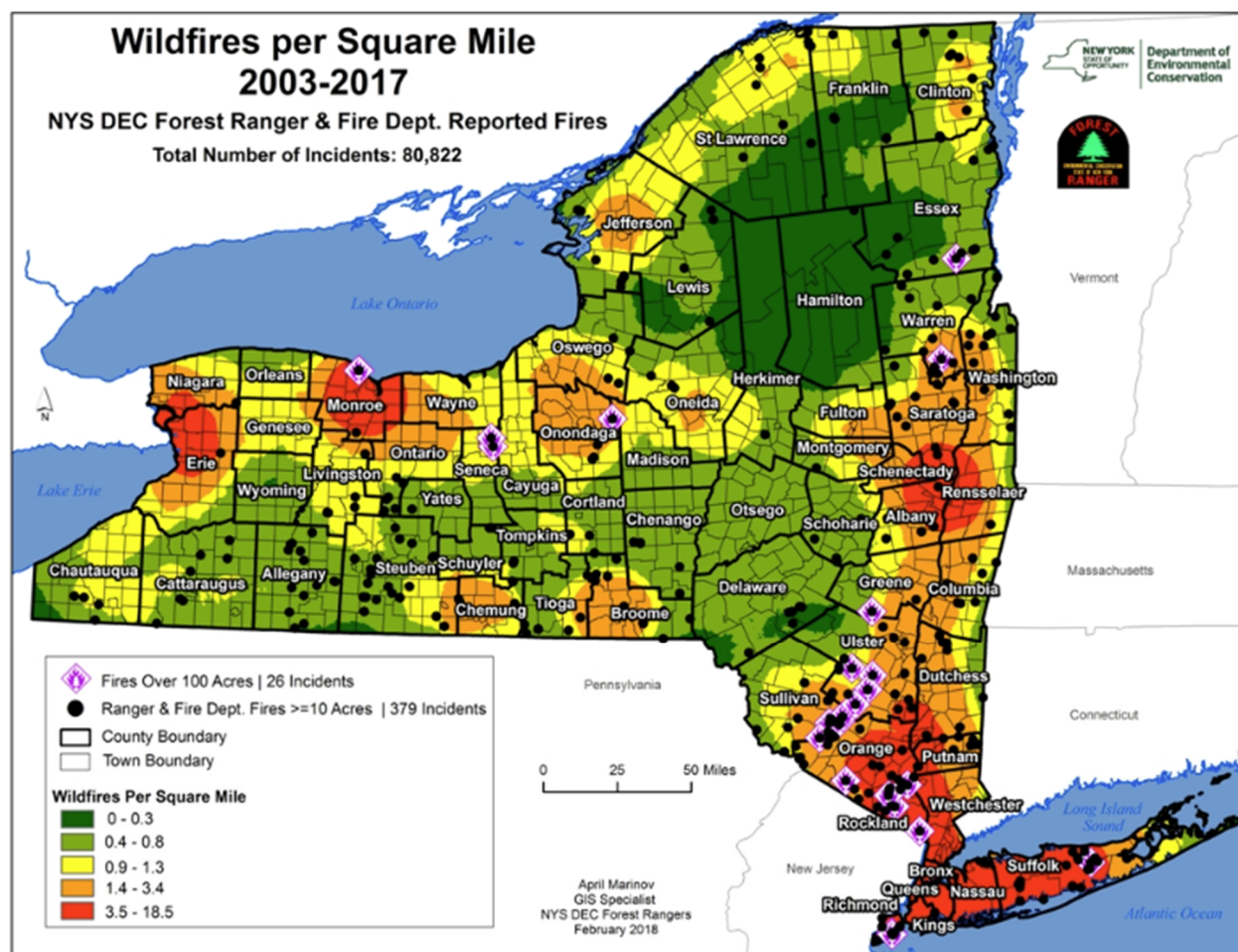
Risk for a wildfire event is measured in terms of magnitude and intensity using the Keetch Byram Drought Index (KBDI), a mathematical system for relating current and recent weather conditions to potential or expected fire behavior. The KBDI is available at the county level. The Ontario County Hazard Mitigation Plan Update provides KBDI levels and descriptions along with the range of historical KBDI levels for the planning area (Section 16).

The average extent to be mitigated for the planning area is a KBDI of 200-300. At this level fires more readily burn and will carry across an area with no gaps. Heavier fuels will not readily ignite and burn. Expect smoldering and the resulting smoke to carry into and possibly through the night. Based on historical records and readily available fuel, the planning area can anticipate a KBDI range from 0 to 500. At the high end of this range fire intensity begins to significantly increase. Fires will readily burn in all directions exposing mineral soils in some locations. Larger fuels may burn or smolder for several days creating possible smoke and control problems.

The NYS DEC provides historical wildfire statistics from 2003 through 2017 (Figure F-5). Detailed data on historic wildfires in the planning area, including damages, acres burned, fatalities, or injuries, was not available. There were no wildfires greater than 100 acres in Ontario County during that same period, but the southern portions of County have experienced incidents greater than 10 acres. The Ontario County planning area can anticipate limited future wildfire events, burning less than 10 acres.

ANNEX F: TOWN OF CANANDAIGUA

Figure F-5. Wildfires per Square Mile, 2003-2017



HISTORICAL OCCURRENCES

Between 2003 and 2022 there were 1,553 wildfire events in Ontario County. These incidents are reported countywide. Most of the incidents (877) were brush or brush and grass mixture fires followed by natural vegetation (309), and grass fires (240). Based on data provided for historical wildfire events for the Ontario County planning area, 235 events have occurred since the 2018 Plan.

PROBABILITY OF FUTURE EVENTS

With 1,553 events in a 19-year period, a wildfire event within the Ontario County planning area, including participating jurisdictions, is “Highly Likely” meaning an event is probable within the next year.

VULNERABILITY AND IMPACT

The Town of Canandaigua planning team members identified the following critical facilities as assets that are considered the most important to the planning area. These facilities are susceptible to a range of impacts caused by wildfire events. Wildfire impacts to critical facilities

ANNEX F: TOWN OF CANANDAIGUA

are similar across the entire planning area and are listed in detail in the wildfire hazard profile (Section 16).

Table F-35. Critical Facilities at Risk

JURISDICTION	CRITICAL FACILITIES
Town of Canandaigua	1 Energy Utility Facility, 5 Evacuation Shelters, 2 Fire Stations, 1 Health Service Facility, 1 Municipal Building, 1 School, 4 Sewage and Water Facilities, 1 Transportation (Air) Facility, 2 transportation (Roads and Routes) Facilities

For the Town of Canandaigua, the impact from a wildfire event can be considered “Limited,” meaning injuries and/or illnesses are treatable with first aid, complete shutdown of facilities and services for 24-hours or less and less than 10 percent of property is destroyed or with major damage. Severity of impact is gauged by acreage burned, homes and structures lost, injuries and fatalities.

ANNEX F: TOWN OF CANANDAIGUA

WIND

HAZARD DESCRIPTION, LOCATION, & EXTENT

The Ontario County Hazard Mitigation Plan Update provides a hazard description, location and extent of the wind hazard for each participating jurisdiction (Section 17). Wind events are not confined to specific geographic boundaries and is considered similar for all participating jurisdictions throughout the planning area.

HISTORICAL OCCURRENCES

Since 1956, 26 wind events are known to have occurred in the Town of Canandaigua. Table F-36 presents information on known historical events impacting the Town of Canandaigua.

Table F-36. Historical Wind Events, 1956-2023¹⁶

JURISDICTION	DATE	MAGNITUDE (knots)	DEATHS	INJURIES	PROPERTY DAMAGE	CROP DAMAGE
City and Town of Canandaigua	6/22/1996	Unknown	0	3	\$170,105	\$0
	6/25/1998	Unknown	0	0	\$21,804	\$0
	6/30/1998	Unknown	0	0	\$21,804	\$0
	7/9/2000	Unknown	0	0	\$25,709	\$0
	7/10/2001	50	0	0	\$13,349	\$0
	7/10/2001	50	0	0	\$25,029	\$0
	7/28/2002	55	0	0	\$65,779	\$0
	5/13/2004	50	0	0	\$12,530	\$0
	5/22/2004	50	0	0	\$23,493	\$0
	8/16/2007	50	0	0	\$11,396	\$0
	9/11/2007	50	0	0	\$14,206	\$0
	6/26/2009	51	0	0	\$20,597	\$0
	4/27/2011	51	0	0	\$19,753	\$0
	5/29/2011	50	0	0	\$13,107	\$0
	9/11/2011	50	0	0	\$19,580	\$0
	6/8/2015	50	0	0	\$18,616	\$0
	5/1/2017	56	0	0	\$30,255	\$0
	5/1/2017	52	0	0	\$14,522	\$0
	7/23/2017	50	0	0	\$14,519	\$0
	10/15/2017	50	0	0	\$12,007	\$0
	10/15/2017	50	0	0	\$12,007	\$0
	7/19/2020	51	0	0	\$28,577	\$0

¹⁶ Historical events are reported from January 1956 through August 2023. Magnitude is listed when available. Damage values are in 2023 dollars.

ANNEX F: TOWN OF CANANDAIGUA

JURISDICTION	DATE	MAGNITUDE (knots)	DEATHS	INJURIES	PROPERTY DAMAGE	CROP DAMAGE
City and Town of Canandaigua	7/29/2020	51	0	0	\$5,715	\$0
	7/29/2020	51	0	0	\$5,715	\$0
	8/27/2020	51	0	0	\$1,139	\$0
	6/16/2022	51	0	0	\$2,188	\$0
TOTALS		(MAX EXTENT)	0	3	\$623,501	\$0

Based on the list of historical wind events for the Town of Canandaigua, five of the reported events have occurred since the 2018 Plan.

PROBABILITY OF FUTURE EVENTS

Historical wind events are often reported on a county-wide basis. While some incidents may be reported at the local municipal level, as indicated above, county level events provide a more robust risk assessment for each participating jurisdiction. According to historical records for the Ontario County planning area, the Town of Canandaigua can expect to experience a wind event every year. This frequency supports a “Highly Likely” probability of future events.

VULNERABILITY AND IMPACT

The Town of Canandaigua planning team members identified the following critical facilities as assets that are considered the most important to the planning area. These facilities are susceptible to a range of impacts caused by wind events. Wind impacts to critical facilities are similar across the entire planning area and are listed in detail in the wind hazard profile (Section 17).

Table F-37. Critical Facilities at Risk

JURISDICTION	CRITICAL FACILITIES
Town of Canandaigua	1 Energy Utility Facility, 5 Evacuation Shelters, 2 Fire Stations, 1 Health Service Facility, 1 Municipal Building, 1 School, 4 Sewage and Water Facilities, 1 Transportation (Air) Facility, 2 transportation (Roads and Routes) Facilities

According to the American Community Survey (ACS) five-year estimates for 2021, a total of 161 manufactured homes are located in the Town of Canandaigua (3 percent of total housing stock). In addition, 29 percent (approximately 1,490 structures) of the housing units were built before 1980. These structures would typically be built to lower or less stringent construction standards than newer construction and may be more susceptible to damage during significant wind events.

Table F-38. Structures at Greater Risk

JURISDICTION	SFR STRUCTURES BUILT BEFORE 1980	MANUFACTURED HOMES
Town of Canandaigua	1,490	161

While all citizens are vulnerable to the impacts of wind events, forced relocation and disaster recovery drastically impacts low-income residents who lack the financial means to travel, afford a

ANNEX F: TOWN OF CANANDAIGUA

long-term stay away from home, and to rebuild or repair their homes. An estimated 8 percent of the Town of Canandaigua’s population live below the poverty level (Table F-39).

Table F-39. Populations at Greatest Risk

JURISDICTION	POPULATION BELOW POVERTY LEVEL
Town of Canandaigua	902

Structural impacts of wind events experienced in the Town of Canandaigua would be considered Limited, with less than 10 percent of property destroyed, and critical facilities shut down for less than 24-hours. However, with three injuries, the impact is considered “Major” with multiple injuries possible depending on the severity of the event. Over the 67.5-year reporting period there has been a total of \$623,501 damages (in 2023 dollars) in the Town of Canandaigua due to wind events. The estimated average annual loss from a wind event is \$9,237.

Table F-40. Estimated Annualized Losses

JURISDICTION	TOTAL PROPERTY & CROP LOSS	ANNUAL LOSS ESTIMATES
Town of Canandaigua	\$623,501	\$9,237

CLIMATE CHANGE CONSIDERATIONS

The Ontario County Hazard Mitigation Plan Update provides climate change considerations for all natural hazards for the entire planning area as climate change impacts are considered similar across all participating jurisdictions in Ontario County unless otherwise stated. Please see Sections 5 through 17 of this Plan Update for additional information on climate change considerations by hazard.

HUMAN-CAUSED HAZARDS

The Ontario County Hazard Mitigation Plan Update provides a detailed hazard profile for human-caused hazards including fire, hazardous materials, infestation, terrorism, utility failure, and water supply contamination. Information for these hazards is limited and typically reported at the county level. As such, the evaluation of human-caused hazards is considered similar for all jurisdictions in the Ontario County planning area. Please see Sections 18 through 23 of this Plan Update for additional information on human-caused hazards evaluated for this plan.

ANNEX F: TOWN OF CANANDAIGUA

PREVIOUS MITIGATION ACTIONS

Previous Action Worksheet	
T Canandaigua – 1: County Road 46 Electric Substation	
Name of Jurisdiction:	Town of Canandaigua
Name of Haz. Mit. Plan:	Ontario County Multi-Jurisdictional Hazard Mitigation Plan – 2015
Risk / Vulnerability	
Problem being Mitigated:	Flooding. Critical facilities at risk include the RGE electric substation in a flood zone. Some roads are susceptible to flooding and closures. There is potential flood risk if future development is located near (or within) flood zones as predicted. Flood zone regulations and enforcement are important to providing protection from 500yr flooding events.
Potential Actions/Projects (not being Implemented at this time)	
Actions/Projects Considered with Summary Evaluation of Each:	Information not reflected in 2018 Plan
Action or Project Intended for Implementation	
Action/Project Number: Name of Action or Project:	<ol style="list-style-type: none"> 1) Communicate and coordinate with RG&E on emergency response plan and hazard mitigation measures. 2) Amend code to prevent damage to new or improved building structures in flood zones. 3) Develop town staff capacity through certification in floodplain management.
Action or Project Description:	<ol style="list-style-type: none"> 1) The RG&E substation on County Road 46 (Tax Map # 84.00-1-18.000) is shown to be in a flood plain. Action to be considered includes contacting RG&E to find out if they have an emergency response plan in the event the facility is compromised due to flooding or other hazard. Communication will also include determining RG&E's interests in assessing and protecting the facility from flood risk, securing grants, etc. Rochester Gas and Electric 70; Farm View Drive; New Gloucester, ME 04260 2) Update and adopt code. 3) Add a Certified Floodplain Manager to town staff.
Summary of Evaluation Benefits (losses avoided): Estimated Cost: Other Factors Considered:	Ensure that the company and jurisdiction can operate in sync in the event of an emergency to maintain continuity of service and continuity of operations.
Plan for Implementation	
Responsible Organization:	Town of Canandaigua
Action/Project Priority:	Medium
Timeline for Completion:	Contact RG&E in 2019
Potential Fund Sources:	None
Local Planning Mechanisms to be Used in Implementation, if any:	None
2024 Analysis	
Date of Status Report: Report of Progress: Evaluation of Effectiveness:	Defer to Plan Update. There is still significant flooding at the CR 46 station. The challenge is that this sits near the border of the city of Canandaigua, the Town of Canandaigua, Town of Hopewell and an Ontario County road. Residents and the

ANNEX F: TOWN OF CANANDAIGUA

	roadway floods. County engineers have been looking at this. This should continue.
--	---

Previous Action Worksheet	
T Canandaigua – 2: Inventory and flushing of fire hydrants	
Name of Jurisdiction:	Town of Canandaigua
Name of Haz. Mit. Plan:	Ontario County Multi-Jurisdictional Hazard Mitigation Plan – 2015
Risk / Vulnerability	
Problem being Mitigated:	Fire/Wildfire
Potential Actions/Projects (not being Implemented at this time)	
Actions/Projects Considered with Summary Evaluation of Each:	Information not reflected in 2018 Plan
Action or Project Intended for Implementation	
Action/Project Number:	Inventory and flushing of fire hydrants
Name of Action or Project:	
Action or Project Description:	T Canandaigua – 2
Summary of Evaluation Benefits (losses avoided):	Inventory and flushing are completed by water department staff supervised by the Town of Canandaigua Highway Water Superintendent
Estimated Cost:	
Other Factors Considered:	
Plan for Implementation	
Responsible Organization:	Town of Canandaigua Water
Action/Project Priority:	Priority
Timeline for Completion:	Ongoing
Potential Fund Sources:	Town Budget
Local Planning Mechanisms to be Used in Implementation, if any:	Annual Budgeting Plan
2024 Analysis	
Date of Status Report:	Completed. The Town has a plan in place to regularly flush and maintain hydrants and is now part of annual maintenance.
Report of Progress:	
Evaluation of Effectiveness:	

ANNEX F: TOWN OF CANANDAIGUA

Previous Action Worksheet	
T Canandaigua – 3: Invasive Aquatic Species	
Name of Jurisdiction:	Town of Canandaigua
Name of Haz. Mit. Plan:	Ontario County Multi-Jurisdictional Hazard Mitigation Plan – 2015
Risk / Vulnerability	
Problem being Mitigated:	Infestation or spread of aquatic invasive species - Canandaigua Lake.
Potential Actions/Projects (not being Implemented at this time)	
Actions/Projects Considered with Summary Evaluation of Each:	Information not reflected in 2018 Plan
Action or Project Intended for Implementation	
Action/Project Number: Name of Action or Project:	1) Work with the Canandaigua Lake Watershed Association, Canandaigua Lake Watershed Council, and Town of Canandaigua Environmental Conservation Board to inform residents about aquatic invasive species. 2) Support watercraft inspections through a watercraft stewards' program and installation of boat washing stations at major public boat launches on Canandaigua Lake outside town boundaries and at Town's Onanda Park boat launch.
Action or Project Description:	Public Information / Education
Summary of Evaluation Benefits (losses avoided): Estimated Cost: Other Factors Considered:	Benefit- protection of Canandaigua Lake which is the source of drinking water for more than 60,000 residents
Plan for Implementation	
Responsible Organization:	Town Board
Action/Project Priority:	Medium
Timeline for Completion:	Ongoing
Potential Fund Sources:	DEC grant, Canandaigua Watershed Council
Local Planning Mechanisms to be Used in Implementation, if any:	Coordinated by the Canandaigua Lake Watershed Manager Canandaigua Lake Watershed Management Plan with support from Finger Lakes PRISM
2024 Analysis	
Date of Status Report: Report of Progress: Evaluation of Effectiveness:	Completed. The Town continues to work with the watershed council and the watershed manager to monitor invasive species. Education plans are consistent, there is a boat wash station in the city. The Town also has signage at parks where non-motorized boats launch.

ANNEX F: TOWN OF CANANDAIGUA

NEW MITIGATION ACTIONS

TOWN OF CANANDAIGUA PROPOSED PROJECTS													
*Projects related to Critical Facilities (CF) will protect the facility to the 500-year event or worst damage scenario, whichever is greater.													
Project #	Goal / Objective being Met	Hazard to be Mitigated	Project Name and Description of the Problem	Description of the Solution	CF?	EHP Issues	Estimated Timeline	Lead Agency	Estimated Costs	Estimated Benefits	Potential Funding Sources	Priority	Community Lifeline
1	3.3	Drought, Flood, Wildfire	Landscape Ordinance: Explore alternative ways to promote mitigation and preserve the land within the Town.	Adopt landscape ordinance (selection and planting guidelines). Review parcels in recognized steep slopes and add planting requirements.	No	N/A	12 months	Town Board	Staff Time	Reduce impact on groundwater; Minimize impacts of expansive soils; Reduce rainfall runoff volume and risk of flooding; Reduce risk and spread of wildfire.	Local Department Budget	L	Communication, Safety/Security
2	4.3	Flood, Wildfire	Restrict Development: There are high-risk areas within the Town.	Restrict future development in high-risk areas. Ordinance committee could review projects within potential flood zones and wildfire locations.	No	Further review required	12 months	Town Board and Ordinance Committee	Staff Time	Reduce risk of damages to new structures and infrastructure through building restrictions in high-risk areas.	Local Department Budget	L	Communication, Safety/Security
3	1.2	Extreme Heat, Flood, Hail, Lightning, Ice Storm, Snow Storm, Tornado, Wildfire, Wind	NOAA Weather Radios: There are some rural and remote areas within the town-limits.	Acquire and distribute NOAA weather radios.	No	N/A	24-36 months	Town Board	\$50,000	Reduce risk to residents through improved communication and early warning.	Local Department Budget; HMGP, BRIC, CDBG, PA 406 (when applicable) local bonds	L	Communication
4	1.1	Flood, Hail, Ice Storm, Tornado, Snow Storm, Wind	StormReady Program: The Town should consider enhancing current preparedness practices.	Obtain certification in the Nation Weather Service StormReady Program.	No	N/A	12-24 months	Town Board	\$10,000	Reduce risk to residents by educating the public on how to prepare for hazards and disasters.	Local Department Budget; HMGP, BRIC, CDBG, PA	L	Communication

ANNEX F: TOWN OF CANANDAIGUA

TOWN OF CANANDAIGUA PROPOSED PROJECTS													
*Projects related to Critical Facilities (CF) will protect the facility to the 500-year event or worst damage scenario, whichever is greater.													
Project #	Goal / Objective being Met	Hazard to be Mitigated	Project Name and Description of the Problem	Description of the Solution	CF?	EHP Issues	Estimated Timeline	Lead Agency	Estimated Costs	Estimated Benefits	Potential Funding Sources	Priority	Community Lifeline
5	1.2	Flood, Snow, Storm, Tornado, Wildfire, Wind	Emergency Notification System: The general public may not have the means to access educational material or notification alerts. By considering an area wide notification system ensures community members are aware of risk.	Look to coordinate with County to activate locally an area-wide telephone Emergency Notification System ("Reverse 911") through exploring software and potential vendors.	No	N/A	24-36 months	Town Board in coordination with 911 Center.	\$100,000	Reduce risk to residents through improved communication and early warning.	406 (when applicable) local bonds Local Department Budget; HMGP, BRIC, CDBG, PA 406 (when applicable) local bonds	L	Communication
6	5.4	Flood	Drainage System Improvements: Inadequate drainage systems cause flooding, damages to roadways, and create hazardous driving conditions for motorists.	Assess drainage system. As identified, increase drainage capacity; add stormwater detention and/or retention basins as deemed necessary to reduce flood risk. Multiple properties located. Expand some drainage projects. Secure more land for more retention parcels. Coordinate with City especially along Sucker Brook Corridor.	No	Further review required	24 – 48 months	Town Board and Public Works	\$1,000,000	Reduce flood risk through improved drainage capacity; Reduce risk of damages and injuries; Reduce emergency response demands.	Local Department Budget; HMGP, BRIC, CDBG, PA 406 (when applicable) local bonds	H	Safety/Security
7	1.4	Extreme Cold, Extreme Heat, Flood, Hail, Ice Storm, Lightning, Snow Storm, Tornado,	Generator for critical facilities: During power outages, critical facilities would be without lights, communications, and maintenance equipment/machinery. The operations are basically brought to a halt. This project helps ensure critical facilities	Assessment of critical facilities that are in need of back-up power sources. Acquire and install generators with hard wired quick connections at identified critical facilities.	Yes	Further review required	24 months	Town Board and Public Works	\$1,000,000	Provide power for critical facilities during power outages and ensure continuity of critical services.	Local Department Budget; HMGP, BRIC, CDBG, PA 406 (when applicable) local bonds	M	Energy (Power/Fuel)

ANNEX F: TOWN OF CANANDAIGUA

TOWN OF CANANDAIGUA PROPOSED PROJECTS													
*Projects related to Critical Facilities (CF) will protect the facility to the 500-year event or worst damage scenario, whichever is greater.													
Project #	Goal / Objective being Met	Hazard to be Mitigated	Project Name and Description of the Problem	Description of the Solution	CF?	EHP Issues	Estimated Timeline	Lead Agency	Estimated Costs	Estimated Benefits	Potential Funding Sources	Priority	Community Lifeline
		Wildfire, Wind, and Utility Failure	continue to provide services during a power outage caused by unforeseen events.										
8	1.4	Flood, Hail, Ice Storm, Lightning, Snow Storm, Tornado, Wildfire, Wind, and Utility Failure	Tree Trimming Program: Tree maintenance is a priority and a plan to address continued maintenance to reduce risk of further damage will need to be developed and implemented. This project protects infrastructure, reduces cost of reparation, and prevents injury to residents.	Adopt and implement a routine tree trimming program that clears tree limbs near power lines and/or hanging in right-of-way; Remove dead trees from right-of way and drainage systems on a scheduled basis.	No	N/A	12 months	Town Board in coordination with location utility companies	Staff Time	Reduce damages to infrastructure; Ensure continuity of services during and after event; Reduce damages associated with power outages; Reduce risk of injuries or fatalities to vulnerable populations.	Local Department Budget, Staff time	L	Safety/Security
9	4.2	Flood	Feasibility Study at Outhouse Park, 2550 Outhouse Road, Canandaigua, NY 14424: There is potential flood risk as location is near (or within) flood zones. This project protects infrastructure, reduces cost of reparation, and prevents injury to residents.	Town of Canandaigua will complete a feasibility study for Outhouse Park to identify the current flood risk to the shelter, determine if mitigation is needed, assess alternatives, implement feasible alternative for flood reduction, protecting the structure to the 0.2% flood level. The study will also evaluate alternative facilities outside of the 1% and .2% flood risk areas.	Yes	Further review required	24-36 months	Town Board	Cost determined based on feasibility assessment	Reduce risk of damage or injuries through flood mitigation at high-risk structures. Ensure continuity of critical services.	Local Department Budget; HMGP, BRIC, CDBG, PA 406 (when applicable) local bonds	H	Safety/Security, Communication
10	4.2	Flood	Feasibility Study at CR 16 (West Lake Road) and State Route 364 (East Lake Road): There is potential flood risk as location is near (or within)	Town of Canandaigua will complete a feasibility study for CR 16 (West Lake Road) and State Route 364 (East Lake	Yes	Further review required	24-36 months	Town Board	Cost determined based on feasibility assessment	Reduce flood risk; reduce damages and risk of injuries or fatalities; reduce loss of function; alternate	Local Department Budget; HMGP, BRIC,	H	Safety/Security, Communication

ANNEX F: TOWN OF CANANDAIGUA

TOWN OF CANANDAIGUA PROPOSED PROJECTS													
*Projects related to Critical Facilities (CF) will protect the facility to the 500-year event or worst damage scenario, whichever is greater.													
Project #	Goal / Objective being Met	Hazard to be Mitigated	Project Name and Description of the Problem	Description of the Solution	CF?	EHP Issues	Estimated Timeline	Lead Agency	Estimated Costs	Estimated Benefits	Potential Funding Sources	Priority	Community Lifeline
			flood zones. CR 16 in Canandaigua (West Lake Road) is identified as the only access road/egress for residents on the west side of the lake. State Route 364 in Canandaigua (East Lake Road) is identified as the only access road/egress for some residents on East Lake Road. This project protects infrastructure, reduces cost of reparation, and prevents injury to residents.	Road) to identify the current flood risk to these access roads, determine if mitigation is needed, assess alternatives, implement feasible alternative for flood reduction, protecting the infrastructure to the 0.2% flood level. The study will also evaluate the feasibility of creating alternate egress routes.						egress to protect lives and ensure continuity of emergency services.	CDBG, PA 406 (when applicable) local bond		
11	5.4	Flood	County Road 46 Electric Substation (Tax Map # 84.00-1-18.000): This site is near the border of the City of Canandaigua, the Town of Canandaigua, Town of Hopewell and an Ontario County Road and is a critical facility these communities. There is potential flood risk if future development is located near (or within) flood zones as predicted. This project protects infrastructure, reduces cost of reparation, and prevents injury to residents.	In conjunction with RG&E's assess flood risk and implement necessary flood mitigation measures to reduce flooding at site location. Explore if alternative mitigation needs to be assessed and completed to reduce roadway flooding.	Yes	Further review required	24 months – On-going	Town Board and Ontario County Engineering Department, in conjunction with RG&E's	Staff Time	Reduce flood risk; reduce damages and risk of injuries or fatalities; protect lives, ensure accessibility of shelter facility.	Local Department Budget, Staff time	M	Safety/Security. Energy (Power/Fuel)
12	3.1	Extreme Heat, Drought	Public Awareness Program: The general public may not have a full understanding of the risk associated with hazards impacting the	Prepare bi-lingual tips for avoiding impacts of extreme heat and drought to be disseminated via press release, social	No	N/A	12 months	Town Board, Ontario County Emergency Management	Staff Time	Promote hazard awareness and protect residents from potential injuries and damages.	Local Department Budget, Staff time	M	Communication

ANNEX F: TOWN OF CANANDAIGUA

TOWN OF CANANDAIGUA PROPOSED PROJECTS													
*Projects related to Critical Facilities (CF) will protect the facility to the 500-year event or worst damage scenario, whichever is greater.													
Project #	Goal / Objective being Met	Hazard to be Mitigated	Project Name and Description of the Problem	Description of the Solution	CF?*	EHP Issues	Estimated Timeline	Lead Agency	Estimated Costs	Estimated Benefits	Potential Funding Sources	Priority	Community Lifeline
			planning area. Education programs can provide life safety benefits to residents in the area and provide information on mitigation measures residents can employ to reduce damages to their property.	media to educate citizens of hazards that can threaten the area and mitigation measures to reduce injuries, fatalities, and property damages. This can include heat advisory warning alerts, water conservation techniques, etc.									
13	3.1	Extreme Cold, Ice Storm, Snow Storm	Public Awareness Program: The general public may not have a full understanding of the risk associated with hazards impacting the planning area. Education programs can provide life safety benefits to residents in the area and provide information on mitigation measures residents can employ to reduce damages to their property.	Prepare bi-lingual tips for avoiding impacts of extreme cold, ice storms and snow storms to be disseminated via press release, social media to educate citizens of hazards that can threaten the area and mitigation measures to reduce injuries, fatalities, and property damages. This can include identifying warming stations, install warning signs at hazardous bridges and roadways subject to ice, mitigation measures to prevent frozen pipes ways, etc.	No	N/A	12 months	Town Board, Ontario County Emergency Management	Staff Time	Reduce risk to citizens by educating the public on how to prepare for hazards and disasters.	Local Department Budget, Staff time	M	Communication
14	3.1	Hail, Tornado, Wind	Public Awareness Program: The general public may not have a full understanding of the risk associated with hazards impacting the	Prepare bi-lingual tips for avoiding impacts of hail, tornado, and wind to be disseminated via press release, social media to	No	N/A	12 months	Town Board, Ontario County Emergency Management	Staff Time	Reduce risk to citizens by educating the public on how to prepare for hazards and disasters.	Local Department Budget, Staff time	M	Communication

ANNEX F: TOWN OF CANANDAIGUA

TOWN OF CANANDAIGUA PROPOSED PROJECTS													
*Projects related to Critical Facilities (CF) will protect the facility to the 500-year event or worst damage scenario, whichever is greater.													
Project #	Goal / Objective being Met	Hazard to be Mitigated	Project Name and Description of the Problem	Description of the Solution	CF?	EHP Issues	Estimated Timeline	Lead Agency	Estimated Costs	Estimated Benefits	Potential Funding Sources	Priority	Community Lifeline
			planning area. Education programs can provide life safety benefits to residents in the area and provide information on mitigation measures residents can employ to reduce damages to their property.	educate citizens of hazards that can threaten the area and mitigation measures to reduce injuries, fatalities, and property damages. This can include harden/retrofitting structures, tree removal/branch maintenance, covered parking, etc.									
15	3.1	Lightning	Public Awareness Program: The general public may not have a full understanding of the risk associated with hazards impacting the planning area. Education programs can provide life safety benefits to residents in the area and provide information on mitigation measures residents can employ to reduce damages to their property.	Prepare tips for avoiding impacts of lightning to be disseminated via press release, social media to educate citizens of hazards that can threaten the area and mitigation measures to reduce injuries, fatalities, and property damages. This can include installation of surge protectors, tree removal/branch maintenance, etc.	No	N/A	12 months	Town Board, Ontario County Emergency Management	Staff Time	Reduce risk to citizens by educating the public on how to prepare for hazards and disasters.	Local Department Budget, Staff time	M	Communication
16	3.1	Wildfire	Public Awareness Program: The general public may not have a full understanding of the risk associated with hazards impacting the planning area. Education programs can provide life safety benefits to residents in the area and provide information on mitigation measures residents can employ to reduce	Prepare bi-lingual tips for avoiding impacts of wildfire to be disseminated via press release, social media to educate citizens of hazards that can threaten the area and mitigation measures to reduce	No	N/A	12 months	Town Board, Ontario County Emergency Management	Staff Time	Reduce risk to citizens by educating the public on how to prepare for hazards and disasters.	Local Department Budget, Staff time	M	Communication

ANNEX F: TOWN OF CANANDAIGUA

TOWN OF CANANDAIGUA PROPOSED PROJECTS													
*Projects related to Critical Facilities (CF) will protect the facility to the 500-year event or worst damage scenario, whichever is greater.													
Project #	Goal / Objective being Met	Hazard to be Mitigated	Project Name and Description of the Problem	Description of the Solution	CF?	EHP Issues	Estimated Timeline	Lead Agency	Estimated Costs	Estimated Benefits	Potential Funding Sources	Priority	Community Lifeline
			damages to their property.	injuries, fatalities, and property damages. This can include identification of high-risk areas, creating defensive space, brush/debris maintenance, etc.									
17	3.1	Landslide	Public Awareness Program: The general public may not have a full understanding of the risk associated with hazards impacting the planning area. Education programs can provide life safety benefits to residents in the area and provide information on mitigation measures residents can employ to reduce damages to their property.	Educate property owners, elected officials, and planning and zoning decision-makers about landslide risks and best management and development practices to minimize risk/damage, which can include: avoid building near steep slopes, close to cliffs, near drainage ways, or stream channels, planting ground cover on slopes; build channels or deflection walls to direct the flow around buildings, installation of flexible pipe fittings to avoid gas or water leaks, and/or use of sandbags, retaining walls or k-rails (Jersey barriers).	No	N/A	36 months	Town Board, Ontario County Planning in partnership with Soil and Water Conservation district	Staff Time	Reduce risk to citizens by educating the public on how to prepare for hazards and disasters.	Local Department Budget, Staff time	L	Communication
18	3.1	Infestation	Invasive Species: Ontario County is at risk of being infested with invasive species which could cause great economic hardship to the	Secure funding for education and best management practices to reduce damage from invasive species on	No	N/A	36 months	Town Board, Ontario County Soil and Water Conservation and	Staff Time	Reduce risk to citizens by educating the public on how to prepare for hazards and disasters.	Local Department Budget, Staff time	L	Communication

ANNEX F: TOWN OF CANANDAIGUA

TOWN OF CANANDAIGUA PROPOSED PROJECTS													
*Projects related to Critical Facilities (CF) will protect the facility to the 500-year event or worst damage scenario, whichever is greater.													
Project #	Goal / Objective being Met	Hazard to be Mitigated	Project Name and Description of the Problem	Description of the Solution	CF?	EHP Issues	Estimated Timeline	Lead Agency	Estimated Costs	Estimated Benefits	Potential Funding Sources	Priority	Community Lifeline
			community and storm water management.	county-wide own properties and private own properties.				Cooperative Extension					
19	3.3	Drought, Flood, Landslide, Snow Storm Tornado, Wildfire, Wind	Code Enforcement: There is a code enforcement officer shortage throughout the county. and those smaller jurisdictions may need to evaluate and update coding to follow the County (who will potentially take lead if position is vacant)	If applicable, need to evaluate and update coding to follow the County.	No	N/A	As needed	Town Board	Staff Time	Ensures compliance to current code and restrictions. Reduce damages to structures and infrastructure; Reduce risk of injuries or fatalities.	Local Department Budget	L	Communication
20	3.1	Fire, HazMat	Public Awareness Program: The general public may not be aware of the risk fire and hazardous material releases as it related to the County.	Work with local fire departments and volunteer fire departments on ways to protect residents and the community from the effects of structural fires and hazardous material releases. This can include monitoring home fire alarms/carbon monoxide alerts, fire extinguishers in home, proper safety tips, etc.	No	N/A	36-60 months	Town Board, in conjunction with Local Fire Departments	Staff Time	Reduce risk to citizens by educating the public on how to prepare for hazards and disasters.	Local Budget	L	Communication
21	3.1	Terrorism	Public Awareness Program: The general public may not be aware of the risk of potential domestic terrorism that could impact the County.	Work with county and local departments to better protect critical infrastructure from potential domestic or foreign terrorism. Educate the public on what to do if they have concerns on a potential threat.	No	N/A	36-60 months	Town Board, in conjunction with Local Police Department	Staff Time	Reduce risk to citizens by educating the public on how to prepare for hazards and disasters.	Local Budget	L	Communication

ANNEX F: TOWN OF CANANDAIGUA

TOWN OF CANANDAIGUA PROPOSED PROJECTS													
*Projects related to Critical Facilities (CF) will protect the facility to the 500-year event or worst damage scenario, whichever is greater.													
Project #	Goal / Objective being Met	Hazard to be Mitigated	Project Name and Description of the Problem	Description of the Solution	CF?	EHP Issues	Estimated Timeline	Lead Agency	Estimated Costs	Estimated Benefits	Potential Funding Sources	Priority	Community Lifeline
22	3.1	Utility Failure	Public Awareness Program: The effects of utility failure no related to hazard events has caused power outages and inability for critical services to remain operational, effecting operations	Work with local utility providers to educate the public on ways to enhance utility operations through sending out notification to service customers by mail or paperless enrollment.	No	N/A	36-60 months	Town Board, in conjunction with local utility providers	Staff Time	Reduce risk to citizens by educating the public on how to prepare for hazards and disasters.	Local Budget	L	Communication
23	3.1	Water Supply Contamination	Public Awareness Program: The effects of water contamination has been experienced throughout the County.	Work with local water districts on educating the public of what they can do to prevent water contamination and/or damage to water infrastructure, such as clearing out drains, better protection of critical infrastructure throughout the community, etc.	No	N/A	36-60 months	Town Board, in conjunction with water districts	Staff Time	Reduce risk to citizens by educating the public on how to prepare for hazards and disasters.	Local Budget	L	Communication

ANNEX F: TOWN OF CANANDAIGUA

CAPABILITY ASSESSMENT

COMMUNITY CAPABILITY CHECKLIST	Town of Canandaigua
PLANS	
Capital Improvements Plan	X
Climate Change Adaptation Plan	
Comprehensive/Master/Land Use Plan	X
Community Wildfire Protection Plan	
Continuity of Operations	X
Drought Contingency Plan	
Economic Development Plan	X
Emergency Management Action Plan	X
Emergency Operations Plan	
Emergency Response Plan and Pandemic Plan Annex	
Extreme Heat Plan/Protocol	
Evacuation Plan	
Floodplain Management Plan	X
Hazard Mitigation Plan	X
Local Waterfront Revitalization Plan	
Natural Resource Conservation Plan	
Open Space Plan	
Stormwater Management Plan	
Transportation Plan	
Watershed Protection Plan	
POLICIES/ORDINANCES	
Building Codes	
Construction Site Stormwater Runoff Control	
Post-Construction Stormwater Management in New Development and Redevelopment	
Critical Infrastructure Protection	X

ANNEX F: TOWN OF CANANDAIGUA

COMMUNITY CAPABILITY CHECKLIST	Town of Canandaigua
Fire Codes	X
Floodplain Ordinance	X
Illicit Discharge Detection and Elimination	X
Local Environmental Review	X
Local Wetland Regulations	
Public Maintenance of Streets, Bridges, other	X
Regulation of Invasive Species	
Regulation for Prevention of Water Contamination	X
Regulation for Unsafe/Defective Structures	X
Sediment and Erosion Control Measures	X
Site Plan Review Requirements	X
Steep Slope Ordinance	X
Stream Buffer Ordinance	X
Stormwater/ Drainage Ordinance	X
Subdivision Regulations	X
Timber Harvesting Regulations	X
Tree Protection or Landscaping Ordinance	X
Use of Pollutants: Road Salt Use, Fertilizers, Pesticides, etc.	X
Wildfire Ordinance	
Winter Road Maintenance	X
Zoning Ordinance/Land Use Restrictions	X
Additional Hazard-Related Regulations or Plans	
PROGRAMS	
Firewise Communities	
Floodplain Maps/Flood Insurance Studies	X
Hydrologic/ Hydraulic Studies	
Mutual Aid Agreement	X

ANNEX F: TOWN OF CANANDAIGUA

COMMUNITY CAPABILITY CHECKLIST	Town of Canandaigua
National Flood Insurance Program Participant	X
NFIP Community Rating System Participant	
Property Acquisition Program	X
Public Education/ Awareness Programs	X
Stream Maintenance Program	X
Storm Drainage Systems Maintenance Program	X
StormReady Communities	
Warning Systems/ Services	X
STAFF / DEPARTMENTS	
Building Code Official	X
Emergency Manager	X
Engineer/Public Works Official	X
Environmental Conservation Specialist	X
Floodplain Administrator	X
GIS Specialist	
Personnel with Hazard Knowledge	X
Planners	X
Public Information Official	X
Resource Development/ Grant Writer	