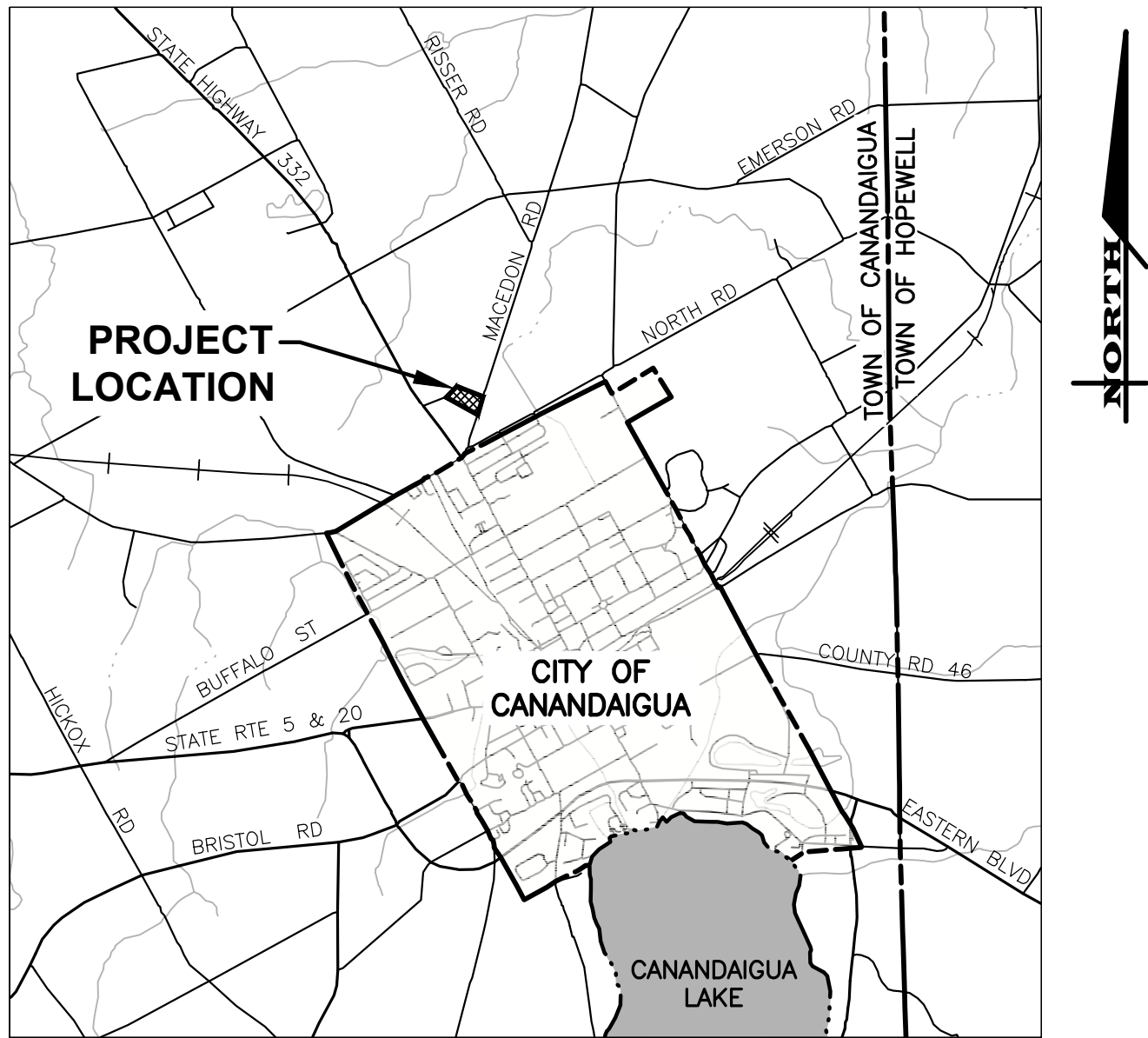


PRELIMINARY SITE PLANS
for
PARKSIDE DRIVE APARTMENTS
PARKSIDE DRIVE

SITUATE IN:
TOWN OF CANANDAIGUA - ONTARIO COUNTY - STATE OF NEW YORK



LOCATION MAP
NOT TO SCALE


MARATHON
ENGINEERING
ROCHESTER LOCATION
39 CASCADE DRIVE
ROCHESTER, NY 14614
585 - 458 - 7770
ITHACA LOCATION
840 HANSHAW RD, STE 12
ITHACA, NY 14850
607 - 241 - 2917
www.marathoneng.com

LIST OF DRAWINGS		
No.	DWG. No.	DESCRIPTION
01	COVER	COVER
02	C0.1	NOTES AND SPECIFICATIONS
03	V1.0	TOPOGRAPHIC SURVEY
04	C2.0	LAYOUT PLAN
05	C3.0	UTILITY PLAN
06	C4.0	GRADING & EROSION CONTROL PLAN
07	C5.0	LIGHTING PLAN
08	C6.0	CONSTRUCTION DETAILS
09	C6.1	CONSTRUCTION DETAILS
10	C6.2	CONSTRUCTION DETAILS

NOTES, INFORMATION AND SPECIFICATIONS

GENERAL

- 1. APPLICABILITY** - THE NOTES AND INFORMATION PROVIDED ON THIS SHEET ARE APPLICABLE TO ALL "C" SERIES DRAWINGS. THE "C" SERIES DRAWINGS COVER SITE RELATED IMPROVEMENTS OUTSIDE THE BUILDING ENVELOPE. THE BUILDING ENVELOPE INCLUDES ALL AREA WITHIN 5' OUTSIDE OF THE BUILDING'S EXTERIOR WALL.
- 2. MAPPING** - THE EXISTING UNDERGROUND UTILITIES WERE PLOTTED BASED ON RECORD MAPPING SUPPLIED BY OTHERS. THE ENGINEER MAKES NO WARRANTY AS TO THE LOCATION, SIZE, TYPE, ELEVATION, AND/OR NUMBER OF EXISTING UTILITIES. THE CONTRACTOR SHALL BE RESPONSIBLE FOR DETERMINING THE HORIZONTAL AND VERTICAL LOCATION OF UTILITIES IN THE VICINITY OF THE NEW INFRASTRUCTURE.
- 3. UTILITY STAKEOUT** - THE CONTRACTOR SHALL NOTIFY DIG SAFELY NEW YORK (1-800-962-7962) FOR A UTILITY STAKEOUT 48 HOURS IN ADVANCE OF COMMENCING WORK. STAKEOUT OF PRIVATE UTILITIES SHALL BE COORDINATED WITH THE OWNER.
- 4. PROPERTY PROTECTION** - THE CONTRACTOR IS RESPONSIBLE FOR DAMAGE TO EXISTING PAVEMENT, CURBS, WALKS, LAWNS, TREES, ETC. CAUSED BY THEIR CONSTRUCTION OPERATIONS. ALL DAMAGE SHALL BE REPAIRED OR REPLACED BY THE CONTRACTOR TO THE OWNER'S SATISFACTION AT NO ADDITIONAL EXPENSE.
- 5. ACCESS** - THE CONTRACTOR SHALL PROVIDE SATISFACTORY VEHICULAR ACCESS TO ALL ADJOINING PROPERTIES, PRIVATE ROADWAYS, PARKING FACILITIES, AND PUBLIC STREETS DURING CONSTRUCTION.
- 6. SITE SAFETY** - PRIOR TO AND THROUGHOUT CONSTRUCTION, THE CONTRACTOR SHALL POST SIGNAGE IN CONFORMANCE WITH THE REQUIREMENTS OF THE LOCAL MUNICIPALITY AND OCCUPATIONAL HEALTH AND SAFETY ACT (OHSAA). JOB SAFETY AND MAINTENANCE AND PROTECTION OF TRAFFIC IS THE RESPONSIBILITY OF THE CONTRACTOR.
- 7. EXCAVATIONS** - ALL EXCAVATIONS SHALL BE BACKFILLED/BARRICADED TO THE SATISFACTION OF THE OWNER'S REPRESENTATIVE AT THE CONCLUSION OF EACH WORKING DAY.
- 8. MAINTENANCE** - PUBLIC STREETS, PRIVATE DRIVES AND PARKING FACILITIES SHALL BE KEPT FREE OF FOREIGN MATERIALS. ALL AREAS SHALL BE SWEEP CLEAN AT THE END OF EACH WORKING DAY AND/OR AS DIRECTED BY THE OWNER'S ON-SITE REPRESENTATIVE.
- 9. CONSTRUCTION STORAGE** - STORAGE OF EQUIPMENT AND MATERIALS SHALL BE WITHIN A SPECIFIED AND SECURED AREA AS DETERMINED IN CONTRACT DOCUMENTS OR AS SPECIFIED BY THE OWNER'S ON-SITE REPRESENTATIVE.
- 10. PERMIT(S)** - PRIOR TO CONSTRUCTION, THE CONTRACTOR SHALL OBTAIN THE NECESSARY PERMITS FROM THE APPLICABLE MUNICIPALITY OR AGENCY. THE CONTRACTOR IS RESPONSIBLE FOR ALL BONDS AND INSURANCES AND THE OWNER IS RESPONSIBLE FOR PERMIT FEES UNLESS OTHERWISE STATED IN THE OWNER/ CONTRACTOR AGREEMENT
- 11. INTERIM CONDITIONS** - THE CONTRACTOR IS RESPONSIBLE TO MAINTAIN POSITIVE DRAINAGE AWAY FROM BUILDINGS AND WITHIN PROJECT AREA TO A STABILIZED OUTLET THROUGHOUT THE CONSTRUCTION PERIOD. THIS MAY REQUIRE INTERIM GRADING, SHIMMING OF PAVEMENT ETC. THAT IS NOT SPECIFICALLY SHOWN ON THE PLANS AND SHALL BE THE RESPONSIBILITY OF THE CONTRACTOR.

CONSTRUCTION

- 1. STAKEOUT** - THE CONSTRUCTION STAKEOUT SHALL BE PERFORMED BY A LICENSED LAND SURVEYOR USING CONTROL PROVIDED ON THE "LAYOUT PLAN". THE BUILDING FOOTPRINT(S), DATED 7/25/22, WERE PROVIDED BY SWBR ARCHITECTS. DISCREPANCIES WITH BUILDING(S), CONTROL POINTS, AND/OR THE DIMENSIONS SHALL BE REPORTED TO THE DESIGN ENGINEER (PRIOR TO THE INSTALLATION OF IMPROVEMENTS) FOR COORDINATION AND CLARIFICATION.
- 2. BOUNDARY** - BOUNDARY INFORMATION WAS PREPARED BY MAGDE LAND SURVEYING DATED AND IS SHOWN FOR GRAPHICAL REPRESENTATION ONLY.
- 3. LAYOUT** - DIMENSIONS SHOWN, WHERE APPLICABLE, SHALL BE FROM THE FACE OF CURB UNLESS SPECIFICALLY CALLED OUT OTHERWISE.
- 4. DEMOLITION** - CLEARING AND GRUBBING SHALL BE LIMITED TO THE SITE BOUNDARIES OR WITHIN THE "WORK LIMIT LINE" AS DEFINED ON THE PLAN. TREES AND OBJECTS DESIGNATED FOR REMOVAL SHALL BE COORDINATED AND FIELD VERIFIED WITH PROJECT ON-SITE REPRESENTATIVE. ALL MATERIALS SHALL BE LEGALLY DISPOSED OF OFF-SITE OR RETURNED TO OWNER AS DIRECTED BY CONTRACT DOCUMENTS. ALL ITEMS NOT SPECIFICALLY CALLED OUT TO BE REMOVED SHALL REMAIN.
- 5. COORDINATION** - THE CONTRACTOR SHALL COORDINATE INSTALLATION OF UTILITY WORK WITH OTHER SITE UTILITIES (I.E. GAS, ELECTRIC, LIGHTING, COMMUNICATIONS) TO AVOID POTENTIAL INSTALLATION CONFLICTS.
- 6. STAGING** - AS DEFINED BY THE CONTRACT DOCUMENTS THE CONTRACTOR SHALL CONSTRUCT A SECURE STAGING AREA FOR STORAGE OF EQUIPMENT, MATERIALS, EMPLOYEE PARKING AND OFFICE SPACE. IF THE AREAMETHOD IS NOT SPECIFICALLY DEFINED ON THE DOCUMENTS THEN IT SHALL BE COORDINATED WITH THE OWNER'S ON-SITE REPRESENTATIVE.
- 7. CLOSE-OUT** - THE CONTRACTOR'S WORK SCOPE INCLUDES BUT IS NOT LIMITED TO THE FOLLOWING AT PROJECT CLOSE-OUT TO THE SATISFACTION OF OWNER'S ON-SITE REPRESENTATIVE:
 - REMOVAL OF ANY CONSTRUCTION DEBRIS.
 - CLEANING PAVEMENT AND WALKWAY SURFACES.
 - RESTORATION OF ALL DISTURBED GRASS AND LANDSCAPED AREAS.
 - PROVIDING BONDS, GUARANTEES, CERTIFICATIONS, ETC. AS REQUIRED BY CONTRACT DOCUMENTS.
 - PROVIDING REDLINES FOR RECORD DRAWING.
 - COMPLETION OF FINAL PUNCH LIST ITEMS.

UTILITIES

1. SANITARY

- 1.1 MATERIALS**
 - **LATERALS** - PIPING SHALL BE POLYVINYL CHLORIDE (PVC) WITH ENDS SUITABLE FOR ELASTOMERIC GASKET JOINTS, AND A MINIMUM WALL THICKNESS OF SDR-21. PIPING AND FITTINGS SHALL MEET ASTM D-2241.
 - **JOINTING MATERIALS** - SHALL BE BELL-AND-SPOOT WITH INTEGRAL PUSH ON TYPE ELASTOMERIC GASKET JOINTS. GASKET MATERIAL TO BE NEOPRENE MEETING ASTM D-3212.
 - **MANHOLES** - SHALL BE PRECAST CONCRETE WITH NEOPRENE GASKETS MEETING ASTM C-478 & ASTM C-443.
- 1.2 INFILTRATION/ EXFILTRATION** - MAXIMUM ALLOWABLE INFILTRATION OR EXFILTRATION SHALL NOT EXCEED 100 GALLONS PER INCH DIAMETER PER MILE OF PIPE PER DAY FOR THE SANITARY SEWER. IF AN AIR TEST IS USED THE TEST AS A MINIMUM SHALL CONFORM TO THE PROCEDURE DESCRIBED IN ASTM F1417 ENTITLED STANDARD PRACTICE FOR INSTALLATION ACCEPTANCE OF PLASTIC NON-PRESSURE SEWER LINES USING LOW-PRESSURE AIR. SANITARY MANHOLES SHALL BE VISUALLY INSPECTED AND TESTED FOR LEAKAGE BY EX FILTRATION OR VACUUM. VACUUM TESTING OF MANHOLES SHALL COMPLY WITH THE METHOD OUTLINED IN THE NEW YORK STATE DEPARTMENT OF ENVIRONMENTAL CONSERVATION TECHNICAL INFORMATION PAMPHLET (TIP) NO. 15 (REVISED).
- 1.3 FLOOR DRAINS** - FLOOR DRAINS, IF CONSTRUCTED IN THE PROJECT, MUST BE CONNECTED TO THE SANITARY SEWER. **NOTE:** FLOOR DRAINS DO NOT INCLUDE FOUNDATION OR FOOTER DRAINS INSTALLED TO INTERCEPT UNCONTAMINATED GROUND WATER. ALL DISCHARGES FROM THE FLOOR DRAINS TO THE SANITARY SEWER MUST COMPLY WITH THE EFFLUENT LIMITS OF THE LOCAL SEWER USE LAW.
- 1.4 TESTING** - DEFLECTION TESTS SHALL BE PERFORMED ON ALL FLEXIBLE PIPE. THE TEST SHALL BE CONDUCTED AFTER THE FINAL BACKFILL HAS BEEN IN PLACE AT LEAST 30 DAYS. NO PIPE SHALL EXCEED A DEFLECTION OF 5% IF THE DEFLECTION TEST IS TO BE RUN USING A RIGID BALL OR MANDREL. IT SHALL HAVE A DIAMETER EQUAL TO 80% OF THE INSIDE DIAMETER OF THE PIPE. THE TEST SHALL BE PERFORMED WITHOUT MECHANICAL PULLING DEVICES.
- 1.5 SEPARATION** - MINIMUM VERTICAL SEPARATION BETWEEN WATER MAINS AND SEWER LINES SHALL BE 18 INCHES MEASURED FROM THE OUTSIDE OF THE PIPES AT THE POINT OF CROSSING. ONE FULL STANDARD LAYING LENGTH OF WATER MAIN SHALL BE CENTERED UNDER OR OVER THE SEWER SO THAT BOTH JOINTS WILL BE AS FAR FROM THE SEWER AS POSSIBLE. IN ADDITION, WHEN THE WATER MAIN PASSES UNDER A SEWER, ADEQUATE STRUCTURAL SUPPORT (COMPACTED SELECTED FILL) SHALL BE PROVIDED FOR THE SEWER TO PREVENT EXCESSIVE DEFLECTION OF JOINTS AND SETTLING OF THE SEWER ON THE WATER MAIN. MINIMUM HORIZONTAL SEPARATION BETWEEN PARALLEL WATER MAINS AND SEWER PIPES (INCLUDING MANHOLES AND VAULTS) SHALL BE 10 FEET MEASURED FROM THE OUTSIDE OF THE PIPES, MANHOLES OR VAULTS.

UTILITIES (CONT.)

2. STORM

- 2.1 REGULATIONS** - STORM SEWERS AND APPURTENANCES SHALL BE CONSTRUCTED IN CONFORMANCE WITH THE LATEST REGULATIONS OF THE MUNICIPALITY.
- 2.2 MATERIALS** - THE CONTRACTOR MAY USE THE FOLLOWING PIPE MATERIAL FOR THE MAIN SEWER AS ALLOWED BY THE MUNICIPALITY, PROVIDING THAT THE ROUGHNESS COEFFICIENT ("N" FACTOR) IS 0.013 OR BETTER.
 - REINFORCED CONCRETE PIPE (RCP), CLASS III
 - HIGH DENSITY CORRUGATED POLYETHYLENE PIPE (PE), AASHTO M-29, TYPE S, ASTM D-3350.
- 2.3 ROOF DRAINAGE** - ALL ROOF DRAINAGE SHALL BE COLLECTED AND PIPED TO THE STORM SEWER SYSTEM UNLESS SPECIFIED OTHERWISE.
- 2.4 TESTING** - UPON COMPLETION OF SYSTEM INSTALLATION, THE MAIN SEWER SYSTEM AND LEADS TO STRUCTURES SHALL BE FLUSHED AND LAMPED TO THE SATISFACTION OF THE OWNERS ON-SITE REPRESENTATIVE.

3. PUBLIC WATER

- 3.1 SPECIFICATIONS** - WATER MAINS AND APPURTENANCES TO BE CONSTRUCTED IN ACCORDANCE WITH THE REGULATIONS AND SPECIFICATIONS OF THE WATER AUTHORITY.
- 3.2 MATERIAL:**
 - WATER MAIN(S) SHALL BE PVC - AWWA C900 DR-18 WATERMAIN.
 - WATER SERVICES(S) SHALL BE MASTER METERED AT THE BACKFLOW ROOM WITHIN THE BUILDING AS REQUIRED BY THE FARMINGTON WATER & SEWER DEPARTMENT.
 - ALL GATE VALVES SHALL HAVE STAINLESS STEEL BODY AND BONNET BOLTS.
- 3.3 TESTS:**
 - PRESSURE - WATER MAINS TO BE PRESSURE TESTED IN ACCORDANCE WITH THE LATEST WATER DEPARTMENT SPECIFICATIONS. **A WATER AUTHORITY REPRESENTATIVE MUST WITNESS THIS TEST.**
 - HEALTH SAMPLE - THE WATER MAIN SHALL BE DISINFECTED EQUAL TO AWWA STANDARD SPECIFICATIONS. DESIGNATION C-051, BY USING THE CONTINUOUS FEED METHOD. AFTER FLUSHING AND DISINFECTING THE WATER MAIN, WATER SAMPLES SHALL BE COLLECTED FROM THE MAIN BY THE CONTRACTOR, TESTED BY AN APPROVED LABORATORY AND RESULTS PROVIDED BY THE CONTRACTOR TO THE FARMINGTON WATER & SEWER DEPARTMENT. TWO SAMPLES ARE REQUIRED AT EACH SAMPLE LOCATION 24 HOURS APART. ONE SAMPLE SHALL INCLUDE HETEROTROPHIC PLATE COUNT. FIRE HYDRANTS ARE NOT ACCEPTABLE SAMPLING POINTS. APPROVAL AND NOTIFICATION BY THE HEALTH DEPARTMENT MUST BE RECEIVED BEFORE THE MAIN IS PLACED IN SERVICE.
- 3.4 INSTALLATION:**
 - WATER SERVICE LINES SHALL HAVE A MINIMUM OF FIVE FEET OF COVER FROM FINISHED GRADE IN LAWN AREAS AND A MINIMUM OF SIX FEET OF COVER FROM FINISHED GRADE IN PAVED AREAS.
 - MINIMUM VERTICAL SEPARATION BETWEEN WATER MAIN AND SEWER MAINS SHALL BE 18" MEASURED FROM THE OUTSIDE OF THE PIPES AT THE POINT OF CROSSING. MINIMUM HORIZONTAL SEPARATION BETWEEN WATER MAINS AND SEWER MAINS SHALL BE TEN FEET MEASURED FROM THE OUTSIDE OF THE PIPES. ONE FULL LENGTH OF WATER MAIN SHALL BE CENTERED UNDER OR OVER THE SEWER SO THAT BOTH JOINTS WILL BE AS FAR FROM THE SEWER AS POSSIBLE. WHERE A WATER MAIN CROSSES UNDER A SEWER, ADEQUATE STRUCTURAL SUPPORT (COMPACTED SELECTED FILL) SHALL BE PROVIDED FOR THE SEWERS TO PREVENT EXCESSIVE DEFLECTION OF JOINTS AND SETTLING ON AND BREAKING THE WATER MAINS.
 - FIRE HYDRANT WEEP HOLES (DRAINS) SHALL BE PLUGGED WHEN GROUND WATER IS ENCOUNTERED WITHIN SEVEN FEET OF THE FINISHED GRADE.
 - ALL MECHANICAL JOINT FITTINGS (TEES, BENDS, PLUGS, ETC.) SHALL BE BACKED WITH 2500 PSI CONCRETE THRUST BLOCKS OF APPROPRIATE SIZE TO PROVIDE THRUST RESTRAINT.

ABBREVIATIONS			
ABBR.	TERM	ABBR.	TERM
AC	ACRE	LS	LUMP SUM
A.O.B.E.	AS ORDERED BY ENGINEER	L.T.	LEFT
ASPH.	ASPHALT	MB	MAILBOX
A.Z.	AZIMUTH	M.O.	MIDDLE ORDINATE
B	BASELINE	MON.	MONUMENT OR MONTH
BM	BENCHMARK	MCOGS	MONROE COUNTY GEODETIC SURVEY
C	CENTERLINE	N.H.	MANHOLE
CLF	CHAIN LINKED FENCE	NEC.	NECESSARY
C.O.	CLEAN-OUT	N.I.G.	NOT-IN- CONTRACT
CONC.	CONCRETE	N.T.S.	NOT TO SCALE
CPP	CORRUGATED POLYETHYLENE PIPE	N/F	NOW OR FORMERLY
CSP	CORRUGATED STEEL PIPE	PAV.T.	PAVEMENT
COV	COVER	PE	POLYETHYLENE PIPE
CB	CURB BOX	PPE	PERFORATED POLYETHYLENE PIPE
CY	CUBIC YARD	PC	POINT OF CURVATURE
D	DEGREE OF CURVE	PI	POINT OF INTERSECTION
DIA.	DIAMETER	PT	POINT OF TANGENCY
DI	DROP INLET	PVC	POINT OF VERTICAL CURVATURE
D.I.P.	DUCTILE IRON PIPE	PV	POINT OF VERTICAL INTERSECTION
EA.	EACH	PVT	POINT OF VERTICAL TANGENCY
ENG.	ENGINEER IN CHARGE	PP	POWER POLE
ELEV.	ELEVATION	P	PROPERTY LINE
EP	EDGE OF PAVEMENT	R	RADIUS
FF	FINISH FLOOR = FINISH FLOOR ELEVATION	RCP	REINFORCED CONCRETE PIPE
I	FIELD INLET	RCKE	ROCHESTER GAS AND ELECTRIC
FR.	FRAME	R.O.W.	RIGHT-OF-WAY
FP	FINISH PAD = GARAGE FLOOR ELEVATION	RT.	RIGHT
F.T.	FEET	SA	ROCHESTER TELEPHONE COMPANY
G	GALLON	SA	SANITARY SEWER
GAL.	GALLON	ST.	STORM SEWER
GR.	GRAVEL	STA.	STATION
G.R.	GUIDE RAIL	STY.	STORY
HCL	HORIZONTAL CONTROL LINE	SY	SQUARE YARD
HYD.	HYDRANT	T	TANGENT DISTANCE
INV.	INVERT	TGL	THEORETICAL GRADE LINE
L	LENGTH OR LENGTH OF CURVE	TYP.	TYPICAL
LF	LINEAR FEET	VC	VERTICAL CURVE
LP	LIGHT POST (PRIVATE)	VTP	VITRIFIED TILE PIPE
		A	CENTRAL ANGLE

EARTHWORK

- 1. PREPARATION** - PRIOR TO START OF EARTHWORK OPERATIONS THE CONTRACTOR SHALL COMPLETE THE FOLLOWING APPLICABLE ITEMS AS DEFINED BY CONTRACT DOCUMENTS:
 - **SITE DEMOLITION** - REMOVAL AND DISPOSAL OFF-SITE IN A LEGAL MANNER; STRUCTURES, UTILITIES, PAVEMENTS, ETC.
 - **CLEARING AND GRUBBING** - REMOVAL AND DISPOSAL OFF-SITE IN A LEGAL MANNER; TREES, BRUSH, STUMPS, ETC.
 - **TOPSOIL STRIPPING** - STRIP AND STOCKPILE TOPSOIL FOR REUSE. EXCESS TOPSOIL MAY BE REMOVED FROM SITE WITH APPROVAL BY OWNER AND MUNICIPALITY.
 - 2. RESPONSIBILITY** - THE CONTRACTOR IS RESPONSIBLE FOR:
 - **ESTIMATE** - COMPLETION OF A QUANTITY TAKEOFF TO DETERMINE THE VOLUME OF CUT, FILL, AND TOPSOIL.
 - **COMPARE AND COORDINATE** WITH INFORMATION PROVIDED BY THE DESIGN ENGINEER.
 - **GRADE TOLERANCES** - ESTABLISHING DESIGN SUBGRADE ELEVATIONS TO WITHIN ONE TENTH OF ONE FOOT (0.10') IN PAVEMENT AREAS (INCLUDING WALKS) AND TO WITHIN THIRTY-THREE HUNDREDTHS OF ONE FOOT (0.33') FOR ALL REMAINING AREAS.
 - **COMPACTION** - ACHIEVING THE SPECIFIED MINIMUM COMPACTION VALUES FOR EMBANKMENT/FILL AREAS. THE TERMS "FILL" AND EMBANKMENT" ARE INTERCHANGEABLE.
 - **CUTS** - ONCE EXCAVATIONS ARE SHAPED TO THE DESIGN GRADES THE AREAS SHALL BE PROTECTED TO ASSURE THAT THE INTEGRITY OF MATERIAL IS NOT COMPROMISED BY CONSTRUCTION VEHICLES AND/OR IMPROPER DRAINAGE. AREAS DETERMINED BY CONTRACTOR TO BE NOT SUITABLE FOR SUBGRADE PLACEMENT SHALL BE IMMEDIATELY REPORTED WHEN THE SUBGRADE IS ESTABLISHED TO OWNER'S REPRESENTATIVE. STABILIZATION MEASURES FOR CUT AREAS MAY BE CONSIDERED BY OWNER'S REPRESENTATIVE AS A CHANGE TO THE BASE CONTRACT.
 - 3. TESTING** - THE FOLLOWING MAXIMUM DRY DENSITIES SHALL BE ACHIEVED AS MEASURED BY THE MODIFIED PROCTOR METHOD ASTM D-1557:
 - **95% UNDER PAVEMENTS, WALKS, AND IN STRUCTURAL FILL AREAS**
 - **85% IN REMAINING AREAS**
- THE AGREEMENT BETWEEN THE OWNER AND CONTRACTOR SHALL DEFINE THE NUMBER OF TESTS AND RESPONSIBILITY. WE RECOMMEND IN EMBANKMENT AREAS ONE PER LIFT AND/OR ONE PER 1,000 CUBIC YARDS.

EROSION CONTROL

- 1. CERTIFICATION** - THE STORM WATER POLLUTION PREVENTION PLAN (SWPPP), WHICH INCLUDES THE "GRADING PLAN," "EROSION CONTROL PLAN," "EROSION CONTROL NOTES", ALONG WITH THE "DRAINAGE REPORT", DEFINES AND MEETS THE REQUIREMENTS OF THE NEW YORK STATE DEPARTMENT OF ENVIRONMENTAL CONSERVATION (NYSDEC) LATEST STORM WATER REGULATIONS.
- 2. CONTRACTOR RESPONSIBILITY** - ALL CONTRACTORS AND SUB-CONTRACTORS SHALL CERTIFY WITHIN THE SWPPP THAT THEY WILL IMPLEMENT AND MAINTAIN STORM WATER MANAGEMENT PRACTICES.
- 3. INSPECTION** - EROSION CONTROL (EC) MEASURES INSTALLED AND MAINTAINED BY THE SITE WORK CONTRACTOR ARE SUBJECT TO THE REVIEW AND APPROVAL OF THE: MUNICIPALITY, DESIGN ENGINEER, NYSDEC, AND OWNER'S REPRESENTATIVE. IMMEDIATE ACTION BY THE CONTRACTOR SHALL BE TAKEN IF ADDITIONAL OR CORRECTIVE MEASURES ARE REQUIRED BY ANY ONE OF THESE CITED REVIEWERS. EROSION CONTROL MEASURES NOT SPECIFICALLY SHOWN ON CONTRACT DRAWINGS (I.E., STRAW BALES, COLLARS, FABRICS, ETC.) SHALL BE INSTALLED AS WARRANTED BY FIELD CONDITIONS, AND AS DIRECTED BY THE AFOREMENTIONED REVIEWERS.
- 4. NOTIFICATION** - AS DESIGN ENGINEER, OUR OFFICE HAS NOTIFIED THE OWNER OF THE INSPECTION REQUIREMENTS UNDER GP-0-20-01. DISTURBANCES OF 1.0 ACRE OR GREATER REQUIRE THAT THE OWNER FILE A NOTICE OF INTENT (NOI) AND A SWPPP WITH THE NYSDEC UNDER STATE POLLUTANT DISCHARGE ELIMINATION SYSTEM (SPDES) GENERAL PERMIT #GP-0-20-01. THE REGULATIONS REQUIRE THAT A LICENSED PROFESSIONAL COMPLETE A WEEKLY INSPECTION (THROUGHOUT THE PERIOD OF LAND DISTURBANCE).
- 5. PRE-CONSTRUCTION** - THE APPROPRIATE EROSION CONTROL MEASURES AS DEFINED BY THE CONSTRUCTION DOCUMENTS SHALL BE INSTALLED PRIOR TO THE START OF ANY CONSTRUCTION ACTIVITIES.
- 6. TOPSOIL** - UPON COMPLETION OF THE STOCKPILE STRIPPING OPERATION, STOCKPILES SHALL BE STABILIZED IN ACCORDANCE TO NYSDEC REGULATIONS.
- 7. SLOPES** - UPON COMPLETION OF GRADING, SLOPES WITH A GRADIENT OF ONE FOOT VERTICAL TO THREE FEET HORIZONTAL (1 ON 3) OR GREATER SHALL BE: TOPSOILED, SEEDED, FERTILIZED AND MULCHED OR TREATED AS SPECIFIED ON CONTRACT DRAWINGS.
- 8. DUST** - THE CONTRACTOR SHALL APPLY WATER AND/OR CALCIUM CHLORIDE, AS CONDITIONS WARRANT, TO CONTROL WIND BORN EROSION. THIS MEASURE APPLIES TO: HAUL ROADS, CUT AND FILL OPERATIONS, SUB-BASE AND ANY OTHER EXPOSED SURFACES.
- 9. OPERATION & MAINTENANCE** - THROUGHOUT THE PERIOD OF CONSTRUCTION AND PRIOR TO ESTABLISHING FINAL GROUND COVER THE SITE CONTRACTOR IS RESPONSIBLE FOR THE OPERATION AND MAINTENANCE OF THE TEMPORARY EROSION CONTROL MEASURES. FOR EXAMPLE, THE SILTATION FACILITIES SHALL BE RE-EXCAVATED WHEN THE VOLUME (3000 CUBIC FEET/DISTURBED ACRE) IS REDUCED BY ONE-HALF OR MORE OF ITS SPECIFIED CAPACITY AND/OR THE MATERIAL IS WITHIN ONE FOOT OF THE DISCHARGE POINT.
- 10. WORK STOPPAGE** - ALL DISTURBED AREAS NOT TO BE WORKED WITHIN 14 DAYS MUST BE SEEDED WITHIN 7 DAYS FROM THE LAST CONSTRUCTION ACTIVITY IN THAT AREA.
- 11. TEMPORARY STABILIZATION** - TEMPORARY STABILIZATION SHALL REQUIRE 4 TONS OF STRAW/ ACRE OF DISTURBANCE PLACED WITH TACKIFIER OR ROLLED WITH A TRACKED VEHICLE TO ENSURE NOT DISPLACED.
- 12. WINTER STABILIZATION** - ALL WINTER STABILIZATION METHODS IDENTIFIED IN THE NYS 'BLUE BOOK' SHALL BE FOLLOWED FOR ANY DISTURBANCE OR NON-STABILIZED AREAS FROM NOVEMBER 15TH - APRIL 1ST.
- 13. SUBSOIL RESTORATION** - ALL AREAS TO BE RESTORED AS LAWN SHALL BE RESTORED PER CHAPTER 5 (5.1.6) OF THE NEW YORK STATE STORMWATER DESIGN MANUAL AND THE SOIL RESTORATION TABLE (TABLE 5.3 - SOIL RESTORATION REQUIREMENTS) SHOWN ON THE PLANS. THE PROJECT SOILS ARE HYDROLOGIC SOIL GROUP A AND SHALL BE RESTORED AS SPECIFIED.
- 14. SEQUENCE** - THE CONTRACTOR SHALL INSTALL EROSION CONTROL MEASURES IN THE FOLLOWING SEQUENCE UNLESS AUTHORIZED OTHERWISE AT PRE-CONSTRUCTION MEETING:
 - INSTALL PERIMETER SEDIMENT CONTROLS, I.E. EROSION FENCING.
 - INSTALL STABILIZED CONSTRUCTION ENTRANCE.
 - PROTECT VEGETATION TO REMAIN.
 - CLEAR/GRUB AND CONSTRUCT DIVERSIONARY SWALES, AND SEDIMENT BASINS.
 - COMPLETE CLEARING AND GRUBBING OPERATION.
 - PLACE EROSION CONTROL MEASURES AT TOPSOIL STOCKPILES AND STRIP TOPSOIL.
 - CONSTRUCT SWALES AND SILTATION DEVICES AS EARTHWORK OPERATIONS PROGRESS.
 - MAINTAIN EROSION CONTROL MEASURES AND PLACE ADDITIONAL MEASURES AS EARTHWORK AND UNDERGROUND UTILITIES ARE CONSTRUCTED.
 - RESTORE AREAS AS DEFINED BY CONTRACT DOCUMENTS.
 - REMOVE EROSION CONTROL MEASURES AS AREAS ARE REESTABLISHED WITH GROUND COVER.

SPECIAL DEMOLITION NOTES

- IT IS INTENDED TO LIMIT DISTURBANCE AS MUCH AS POSSIBLE. THE CONTRACTOR WILL BE RESPONSIBLE TO COORDINATE DEMOLITION SCHEDULE, PHASING, PEDESTRIAN SAFETY, PARKING AND VEHICULAR CIRCULATION, STOCKPILE LOCATIONS AND SECURITY FENCING WITH OWNERS ON-SITE REPRESENTATIVE. ANY DISTURBANCE OUTSIDE THE WORK LIMIT LINE SHALL BE COORDINATED WITH THE OWNER'S ON-SITE REPRESENTATIVE.
- REMOVE ALL TREES WITHIN THE WORK LIMIT LINE UNLESS SPECIFICALLY CALLED OUT TO REMAIN.

LEGEND:

EXISTING	PROPOSED	DESCRIPTION
		SIGN
		LIGHT POLE
		POWER POLE
		GAS MAIN & VALVE
		ELECTRIC CONDUIT & STRUCTURE
		TELEPHONE CONDUIT & STRUCTURE
		CENTERLINE AND STATIONING
		RIGHT-OF-WAY OR PROPERTY LINE
		CURB
		FENCE (DESCRIPTION)
		SANITARY SEWER WITH MANHOLE
		STORM SEWER, MANHOLE & FIELD/DROP INLET
		WATER MAIN WITH HYDRANT & GATE VALVE
		CENTERLINE OF SWALE
		CONTOUR
		DRAINAGE FLOW ARROW
		SPOT ELEVATION
		TREE LINE
		TREE PROTECTION
		PARKING SPACE COUNT

MARATHON ENGINEERING
ROCHESTER LOCATION
39 CASCADE DRIVE
ROCHESTER, NY 14614
585-458-7770
ITHACA LOCATION
840 HANSHAW RD, STE 6
ITHACA, NY 14850
607-241-2917
www.marathoneng.com

PRELIMINARY SITE PLANS for PARKSIDE DRIVE APARTMENTS

STATE OF NEW YORK

PARKSIDE DRIVE
ONTARIO COUNTY

TOWN OF CANANDAIGUA

JOB NO: 1419-22
SCALE: AS SHOWN
DRAWN: LJB
DESIGNED: MPT
DATE: 8/1/22

REVISIONS

DATE	BY	REVISION
------	----	----------

IT IS A REPRESENTATION OF NEW YORK STATE PROFESSIONAL ENGINEER ROBERT P. BRINGLEY THAT THE DESIGN FOR ANY PERSON, UNDER ACTING UNDER THE DIRECTION OF A LICENSED PROFESSIONAL ENGINEER OR LAND SURVEYOR, TO DESIGN ANY WORK, WITHIN THE SCOPE OF A PROFESSIONAL ENGINEER OR LAND SURVEYOR, IS AN ETHICAL OBLIGATION OF A PROFESSIONAL ENGINEER OR LAND SURVEYOR TO THE PUBLIC. THE SIGNING ENGINEER OR LAND SURVEYOR SHALL, WITHIN THE SCOPE OF HIS OR HER PROFESSIONAL RESPONSIBILITY, BE RESPONSIBLE FOR THE ACCURACY AND COMPLETENESS OF THE DESIGN, AND THE DATE OF SUCH ALTERATION, AND A SPECIFIC

COPYRIGHT © 2022 MARATHON ENG.



ROBERT P. BRINGLEY

DRAWING TITLE:
NOTES AND SPECIFICATIONS

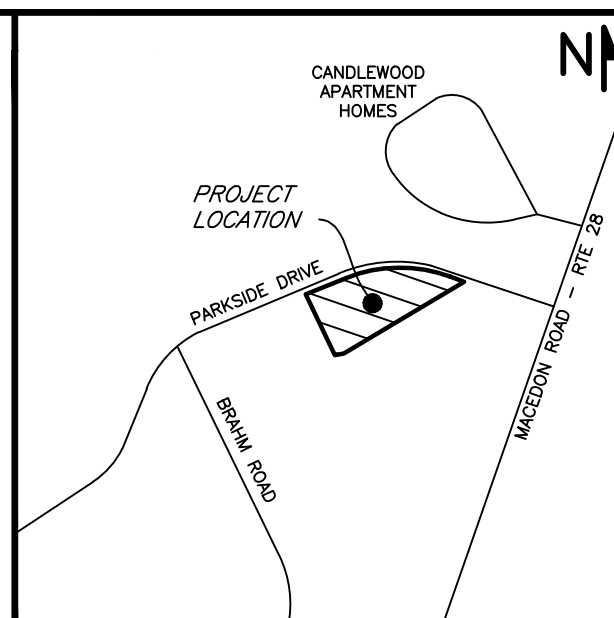
02 of 10 SHEET No:	C0.1
1419-22 JOB No:	

1. **MAPPING** – THE EXISTING UNDERGROUND UTILITIES WERE PLOTTED BASED ON RECORD MAPPING SUPPLIED BY OTHERS. THE ENGINEER MAKES NO WARRANTY AS TO THE LOCATION, SIZE, TYPE, ELEVATION, AND/OR NUMBER OF EXISTING UTILITIES. THE CONTRACTOR SHALL BE RESPONSIBLE FOR DETERMINING THE HORIZONTAL AND VERTICAL LOCATION OF UTILITIES IN THE VICINITY OF THE INFRASTRUCTURE.
 - SANITARY SEWERS WERE PLOTTED FROM RECORD MAPS RECEIVED FROM ONTARIO COUNTY PUBLIC WORKS ON 03/17/2022
 - STORM SEWERS WERE PLOTTED FROM RECORD MAPS RECEIVED FROM ONTARIO COUNTY PUBLIC WORKS ON 03/17/2022
 - UNDERGROUND GAS SERVICES AND MAINS WERE PLOTTED FROM RECORD MAPS RECEIVED FROM RG&E ON 03/17/2022
 - UNDERGROUND ELECTRIC LINES WERE PLOTTED FROM RECORD MAPS RECEIVED FROM RG&E ON 03/17/2022
2. **STAKEOUT** – THE CONTRACTOR SHALL NOTIFY DIG SAFELY NEW YORK (1-800-962-7962) FOR A UTILITY STAKEOUT 48 HOURS IN ADVANCE OF COMMENCING WORK. STAKEOUT OF PRIVATE UTILITIES SHALL BE COORDINATED WITH THE OWNER.
3. **BOUNDARY** – BOUNDARY INFORMATION WAS TAKEN FROM THE MAPS AND DOCUMENTS REFERENCED ON THIS SHEET.
4. **DATUM** – THE VERTICAL DATUM IS NAVD83. THE HORIZONTAL DATUM IS NAD83 CENTRAL ZONE.
5. **FLOODPLAIN** – THE PROPERTY IS LOCATED IN ZONE 'X' AND IS NOT LOCATED GRAPHICALLY IN THE FLOODPLAIN AS SHOWN ON COMMUNITY PANEL NO. 3605980005 DATED 03/03/1997.

FILED ONTARIO COUNTY MAPS
1. 5771
2. 14829
3. 17252
4. 23802
5. 26199
6. 26983
7. 28327

8. AN INSTRUMENT SURVEY OF 70.11-1-30 FOR JAMES J. VOLPE
BY BRITTE ASSOCIATES CREATED ON 08/25/88.

9. UTILITY EASEMENT FOR TAX ACCOUNT 070.011-1-30 PROVIDED
BY ROCHESTER GENERAL AND ELECTRIC..



TOWN OF CANANDAGUA
LOCATION MAP
NOT TO SCALE

PROPERTY LINE
EASEMENT LINE
ADJOINER LINE
RIGHT-OF-WAY LINE
IRON PIPE/PIPE, MONUMENT
SIDEWALK
CENTERLINE

CONTOURS

SPOT ELEVATION

STORM SEWER MANHOLE,
INLET, INLET MANHOLE &
END SECTION

SANITARY SEWER LINE & MANHOLE

GAS VALVE, MAIN & METER
GAS TELEPHONE PEDESTAL,
& CABLE PEDESTAL

BURIED ELECTRIC LINE
BURIED TELE LINE
BURIED FIBER LINE
TELCOM MANHOLE



MARATHON
ENGINEERING

ROCHESTER LOCATION

39 CASCADE DRIVE
ROCHESTER, NY 14614
585 - 458 - 7770

ITHACA LOCATION

840 HANSHAW RD, STE 6
ITHACA, NY 14850
607 - 241 - 2917

www.marathoneng.com

PRELIMINARY SITE PLANS
for
PARKSIDE DRIVE APARTMENTS

TOWN OF CANANDAIGUA
PARKSIDE DRIVE
ONTARIO COUNTY
STATE OF NEW YORK

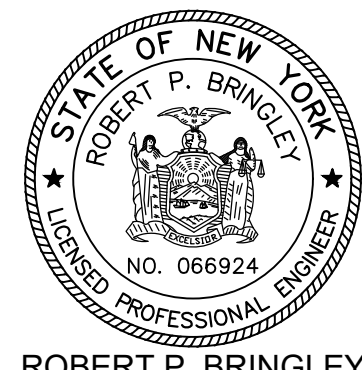
JOB NO: 1419-22
SCALE: 1"=20'
DRAWN: DM
DESIGNED: RPB
DATE: 03/31/2022

REVISIONS

DATE	BY	REVISION

IT IS A VIOLATION OF NEW YORK STATE EDUCATION LAW ARTICLE 145, SECTION 720 ANY PERSON, UNLESS ACTING UNDER THE DIRECTION OF A LICENSED PROFESSIONAL ENGINEER OR LAND SURVEYOR, TO ALTER IN ANY WAY, AN ITEM BEARING THE SEAL OF A PROFESSIONAL ENGINEER OR LAND SURVEYOR. IF AN ITEM BEARING THE SEAL OF A PROFESSIONAL ENGINEER OR LAND SURVEYOR IS ALTERED, THE ALTERING INDIVIDUAL AND LAND SURVEYOR SHALL AFFIX TO THE ITEM THEIR SEAL AND THE NOTATION "ALTERED" FOLLOWED BY THEIR SIGNATURE AND THE DATE OF SUCH ALTERATION, AND A SHORT DESCRIPTION OF THE ALTERATION.

COPYRIGHT © 2022 MARATHON ENG.



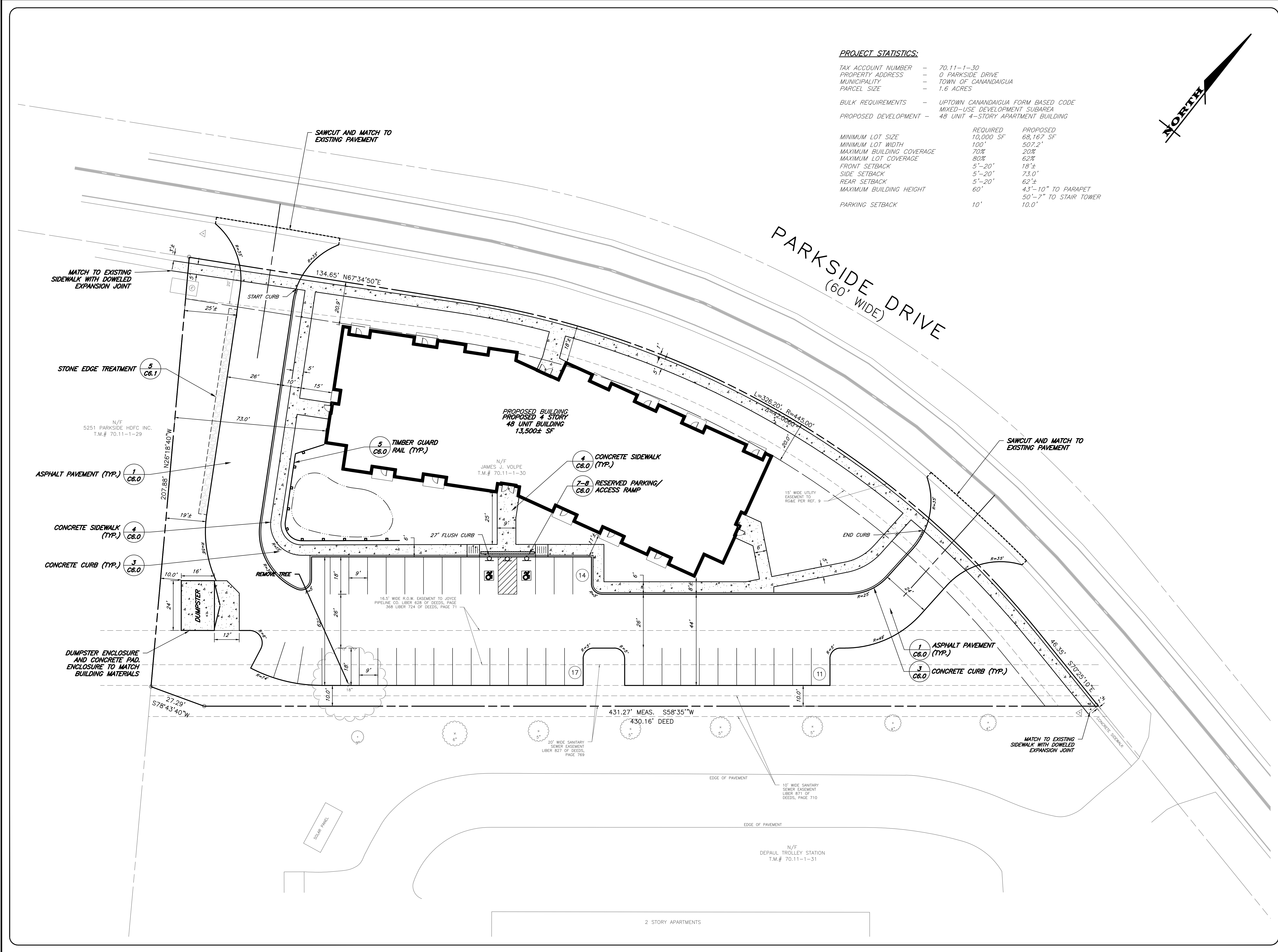
ROBERT P. BRINGLEY

DRAWING TITLE:

EXISTING
CONDITIONS AND
DEMOLITION PLAN

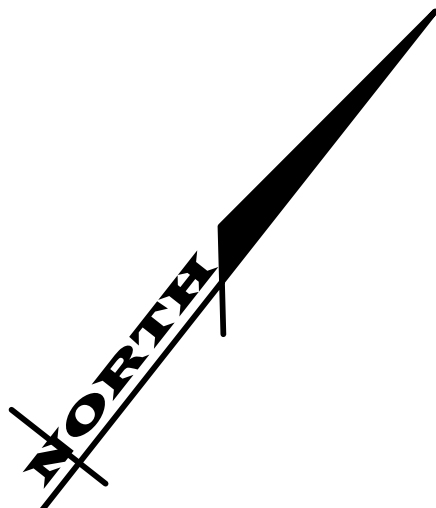
03 of 10	V1.0
SHEET No:	
1419-22	DRAWING No:
JOB No:	

File: z:\engineering\job_files\1419-22\Drawings\ Sheets\C2.dwg, Last saved: 8/1/2022, Plot Date: 8/1/2022, By: COLE PAPASERO1, Plot Style: MARATHON STANDARD.CTB



PROJECT STATISTICS:

TAX ACCOUNT NUMBER	-	70.11-1-30
PROPERTY ADDRESS	-	0 PARKSIDE DRIVE
MUNICIPALITY	-	TOWN OF CANANDAIGUA
PARCEL SIZE	-	1.6 ACRES
BULK REQUIREMENTS	-	UPTOWN CANANDAIGUA FORM BASED CODE
PROPOSED DEVELOPMENT	-	MIXED-USE DEVELOPMENT SUBAREA
	-	48 UNIT 4-STORY APARTMENT BUILDING
MINIMUM LOT SIZE	REQUIRED 10,000 SF	PROPOSED 68,167 SF
MINIMUM LOT WIDTH	100'	507.2'
MAXIMUM BUILDING COVERAGE	70%	20%
MAXIMUM LOT COVERAGE	80%	62%
FRONT SETBACK	5'-20'	18'±
SIDE SETBACK	5'-20'	73.0'
REAR SETBACK	5'-20'	62'±
MAXIMUM BUILDING HEIGHT	60'	43'-10" TO PARAPET 50'-7" TO STAIR TOWER
PARKING SETBACK	10'	10.0'



MARATHON ENGINEERING
ROCHESTER LOCATION
39 CASCADE DRIVE
ROCHESTER, NY 14614
585-458-7770
ITHACA LOCATION
840 HANSHAW RD, STE 6
ITHACA, NY 14850
607-241-2917
www.marathoneng.com

PRELIMINARY SITE PLANS
for
PARKSIDE DRIVE APARTMENTS

STATE OF NEW YORK
PARKSIDE DRIVE
ONTARIO COUNTY
TOWN OF CANANDAIGUA

JOB NO: 1419-22
SCALE: 1" = 20'
DRAWN: LJB
DESIGNED: MPT
DATE: 8/1/22

REVISIONS		
DATE	BY	REVISION

IT IS A VIOLATION OF NEW YORK STATE EMBROIDERY LAW TO REPRODUCE THIS DRAWING FOR ANY PERSON, UNDER ANY CIRCUMSTANCES, WITHOUT THE WRITTEN PERMISSION OF MARATHON ENGINEERING. ANY REPRODUCTION OF THIS DRAWING WITHOUT THE WRITTEN PERMISSION OF MARATHON ENGINEERING IS A VIOLATION OF THE EMBROIDERY LAW. THE USER OF THIS DRAWING SHALL BE RESPONSIBLE FOR OBTAINING ALL NECESSARY PERMITS AND FOR THE DATE OF SUCH ALTERATION, AND A SPECIFIC DESCRIPTION OF THE ALTERATION.

COPYRIGHT © 2022 MARATHON ENG.

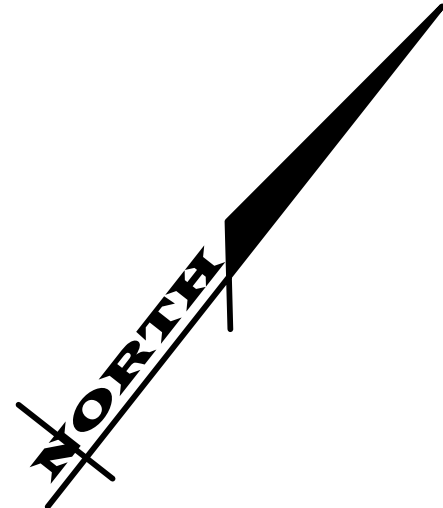
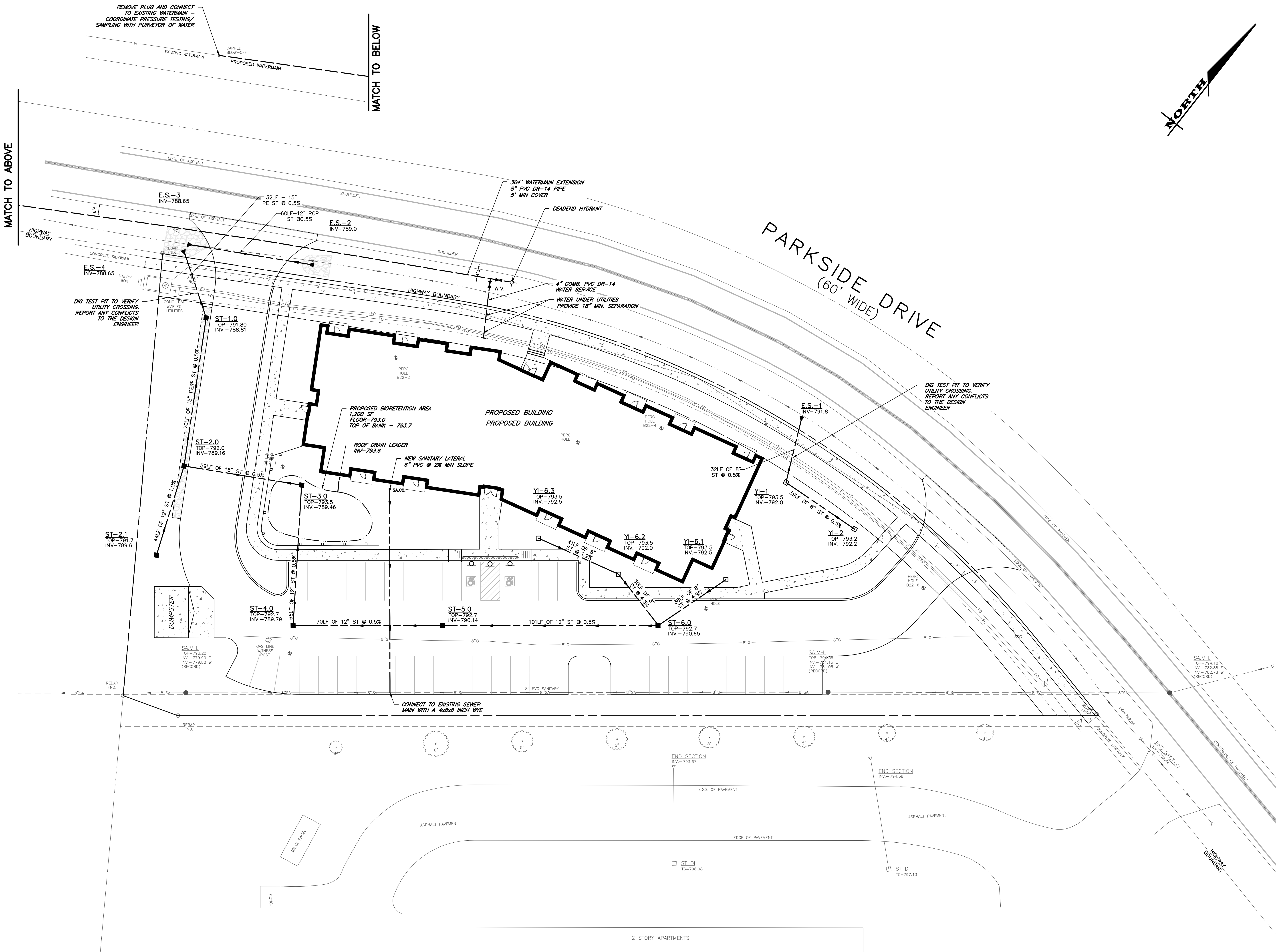
STATE OF NEW YORK
ROBERT P. BRINGLEY
NO. 066924
PROFESSIONAL ENGINEER

ROBERT P. BRINGLEY

DRAWING TITLE:
LAYOUT PLAN

04 of 10 SHEET No:	C2.0
1419-22 JOB No:	
DRAWING No:	

File: z:\engineering\Job_files\1419-22\Drawings\ Sheets\C3.dwg, Last saved: 8/1/2022, Plot Date: 8/1/2022, By: COLE PAPASEROI, Plot Style: MARATHON STANDARD.CTB



MARATHON ENGINEERING
ROCHESTER LOCATION
39 CASCADE DRIVE
ROCHESTER, NY 14614
585-458-7770
ITHACA LOCATION
840 HANSHAW RD, STE 6
ITHACA, NY 14850
607-241-2917
www.marathoneng.com

PRELIMINARY SITE PLANS
for
PARKSIDE DRIVE APARTMENTS
TOWN OF CANANDAIGUA PARKSIDE DRIVE ONTARIO COUNTY STATE OF NEW YORK

JOB NO: 1419-22
SCALE: 1"=20'
DRAWN: LJB
DESIGNED: MPT
DATE: 8/1/22

REVISIONS		
DATE	BY	REVISION

IT IS A VIOLATION OF NEW YORK STATE EDUCATION LAW ARTICLE 148, SECTION 270(2)(b) FOR ANY PERSON, UNDER ACTING UNDER THE DIRECTION OF A LICENSED PROFESSIONAL ENGINEER, ARCHITECT, LAND SURVEYOR, OR LAND SURVEYOR, TO SIGN ANY DRAWING OR SPECIFICATION OF A PROFESSIONAL ENGINEER OR LAND SURVEYOR, IF AN OTHER SIGNING THE SEAL OF A PROFESSIONAL ENGINEER OR LAND SURVEYOR, WITHOUT THE SIGNING ENGINEER OR LAND SURVEYOR BEING AWARE OF THE SIGNING ENGINEER OR LAND SURVEYOR'S SIGNATURE, AND THE DATE OF SUCH SIGNATURE, AND A SPECIFIC DESCRIPTION OF THE VIOLATION.

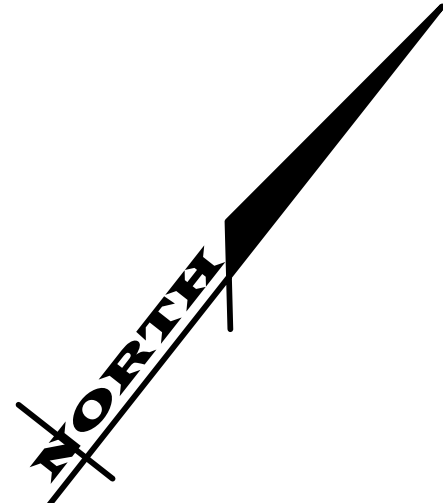
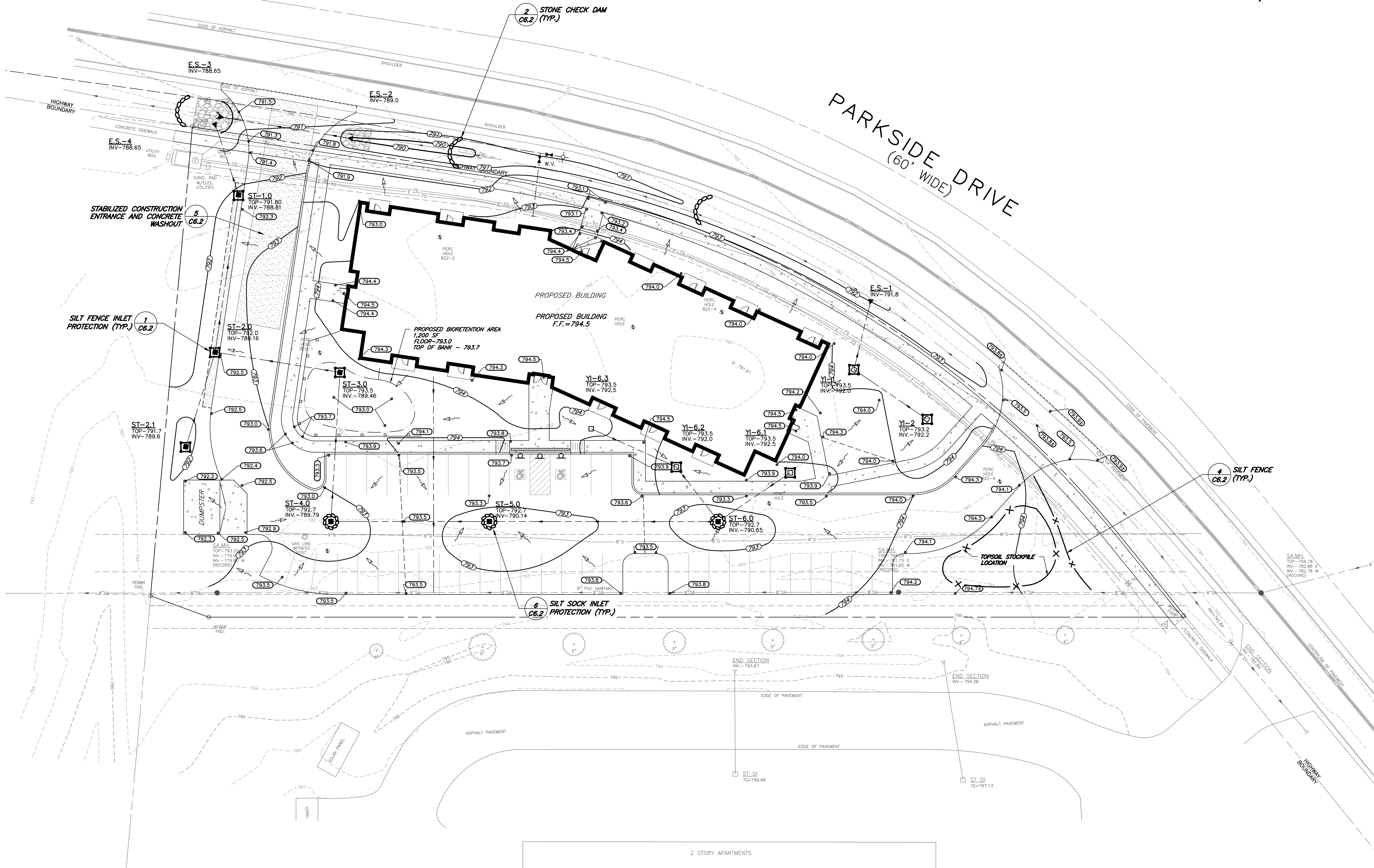
COPYRIGHT © 2022 MARATHON ENG.

ROBERT P. BRINGLEY

DRAWING TITLE:
UTILITY PLAN

05 of 10 SHEET No:	C3.0
1419-22 JOB No:	
DRAWING No:	

File: z:\engineering\job_files\1419-22\Drawings\ Sheets\C4.dwg, Last saved: 8/1/2022, Plot Date: 8/1/2022, Plot Style: MARATHON STANDARD.CTB



MARATHON ENGINEERING
ROCHESTER LOCATION
39 CASCADE DRIVE
ROCHESTER, NY 14614
585-458-7770
ITHACA LOCATION
840 HANSHAW RD, STE 6
ITHACA, NY 14850
607-241-2917
www.marathoneng.com

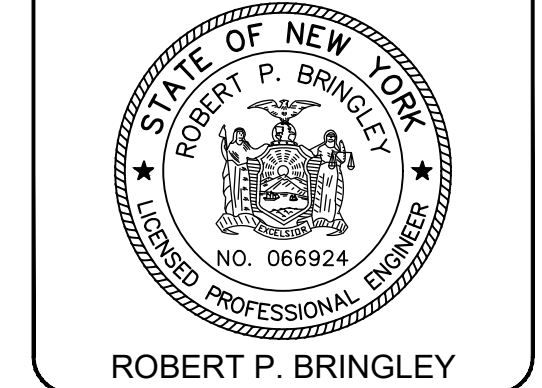
PRELIMINARY SITE PLANS
for
PARKSIDE DRIVE APARTMENTS
TOWN OF CANANDAIGUA
PARKSIDE DRIVE
ONTARIO COUNTY
STATE OF NEW YORK

JOB NO: 1419-22
SCALE: 1" = 20'
DRAWN: LJB
DESIGNED: MPT
DATE: 8/1/22

REVISIONS		
DATE	BY	REVISION


IT IS A VIOLATION OF NEW YORK STATE EROSION CONTROL ACTS FOR ANY PERSON, UNDER ACTING UNDER THE DIRECTION OF A LICENSED PROFESSIONAL ENGINEER OR LAND SURVEYOR, TO ALTER ANY MARK, WITHIN THE BOUNDARY OF A PROFESSIONAL ENGINEER OR LAND SURVEYOR, WITHOUT THE WRITING CONSENT OF THE PROFESSIONAL ENGINEER OR LAND SURVEYOR. THE ALTERING, REMOVAL OR MISPLACEMENT OF ANY MARK SHALL BE A VIOLATION OF THE EROSION CONTROL ACTS AND THE VIOLATION SHALL BE PUNISHED BY THE STATE OF NEW YORK.

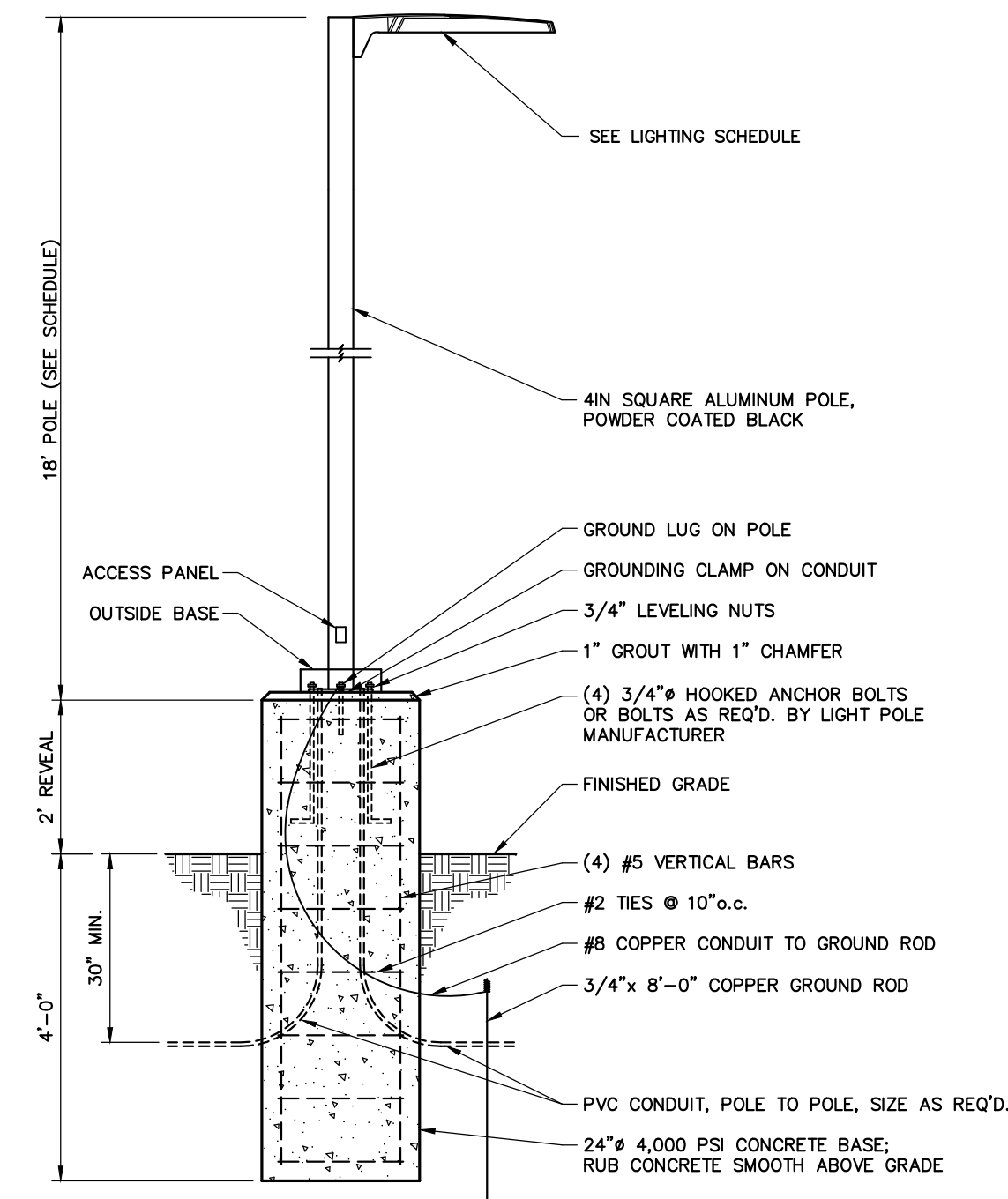
COPYRIGHT © 2022 MARATHON ENG.



DRAWING TITLE:
GRADING & EROSION CONTROL PLAN

06 of 10	C4.0
SHEET No:	
1419-22	
JOB No:	DRAWING No:

Parkside Drive (1419-22) LUMINAIRE SCHEDULE					
TYPE	SYMBOL	DESCRIPTION	MOUNTING/BALLAST	LLF	QTY
PK4		COOPER LIGHTING Type4 LED (1) "PK-4" GLEON-SA4C-730-U-SL4	18' square 2' Conc. Base 20' Mtg Height	0.90	5



- NOTES:**
1. POLE BASE MAY BE PRECAST BY LAKELANDS (LB24D)
 2. LIGHT POLE MANUFACTURER TO SUPPLY ANCHOR BOLTS, OUTSIDE BASE, AND BOLT PATTERN TEMPLATES.
 3. IN PAVEMENT AREAS CONCRETE BASE SHALL EXTEND 24" MINIMUM ABOVE ASPHALT. IN PROTECTED LANDSCAPE AREAS (BEHIND CURB) BASES SHALL HAVE A MINIMUM OF 6" REVEAL ABOVE FINISHED GRADE.
 4. BASES SHALL HAVE 2' MIN. HORIZONTAL SEPARATION FROM BACK OF CURB OR SIDEWALK UNLESS SPECIFICALLY CALLED OUT OTHERWISE ON THE PLANS.

1 LIGHT POLE BASE



PRELIMINARY SITE PLANS
for
PARKSIDE DRIVE APARTMENTS

TOWN OF CANANDAIGUA
PARKSIDE DRIVE
ONTARIO COUNTY
STATE OF NEW YORK

JOB NO: 1419-22
SCALE: 1" = 20'
DRAWN: LJB
DESIGNED: MPT
DATE: 8/1/22

REVISIONS		
DATE	BY	REVISION

IT IS A VIOLATION OF NEW YORK STATE EDUCATION LAW ARTICLE 145, SECTION 7209 FOR ANY PERSON, UNLESS ACTING UNDER THE DIRECTION OF A LICENSED PROFESSIONAL ENGINEER OR LAND SURVEYOR, TO ALTER IN ANY WAY, AN ITEM BEARING THE SEAL OF A PROFESSIONAL ENGINEER AND SURVEYOR. IF AN ITEM BEARING THE SEAL OF A PROFESSIONAL ENGINEER OR LAND SURVEYOR IS ALTERED, THE ALTERING ENGINEER OR LAND SURVEYOR SHALL AFFIX TO THE ITEM THEIR SEAL AND THE NOTATION "ALTERED BY" FOLLOWED BY THEIR SIGNATURE AND THE DATE OF SUCH ALTERATION, AND A SPECIFIC DESCRIPTION OF THE ALTERATION.

COPYRIGHT © 2022 MARATHON ENG.



ROBERT P. BRINGLEY

DRAWING TITLE:
LIGHTING PLAN

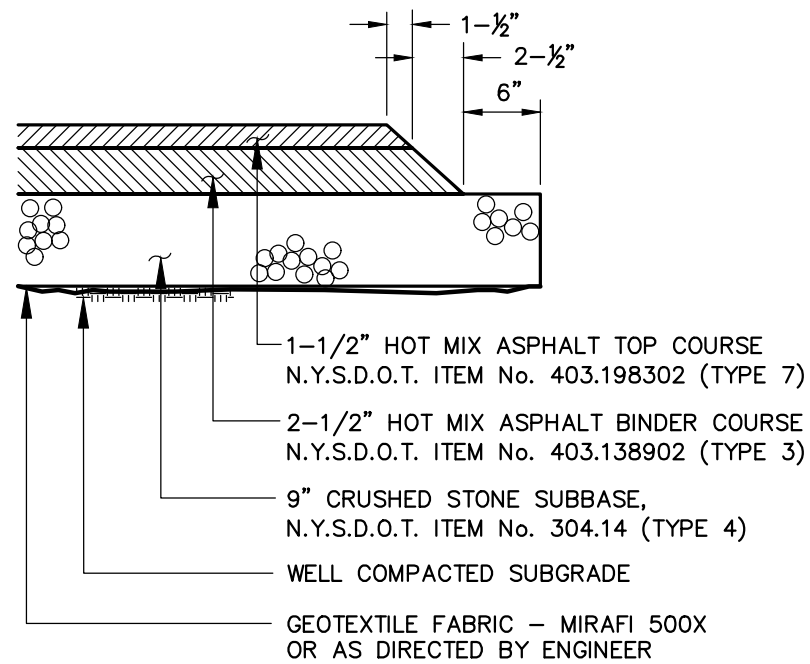
07 of 10

SHEET No:

1419-22

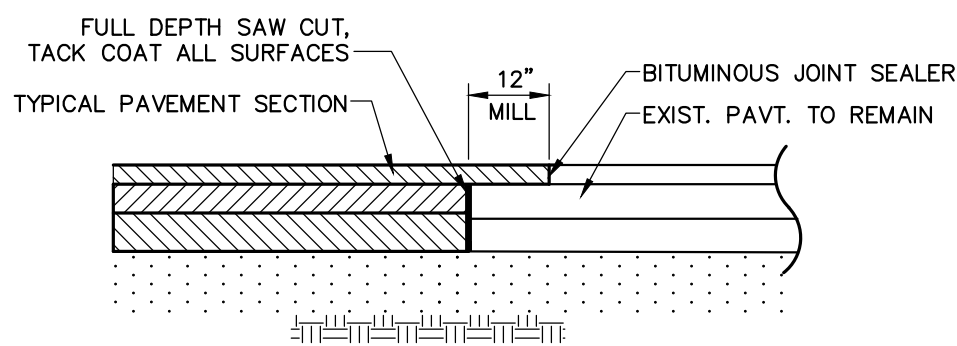
C5.0

DRAWING No

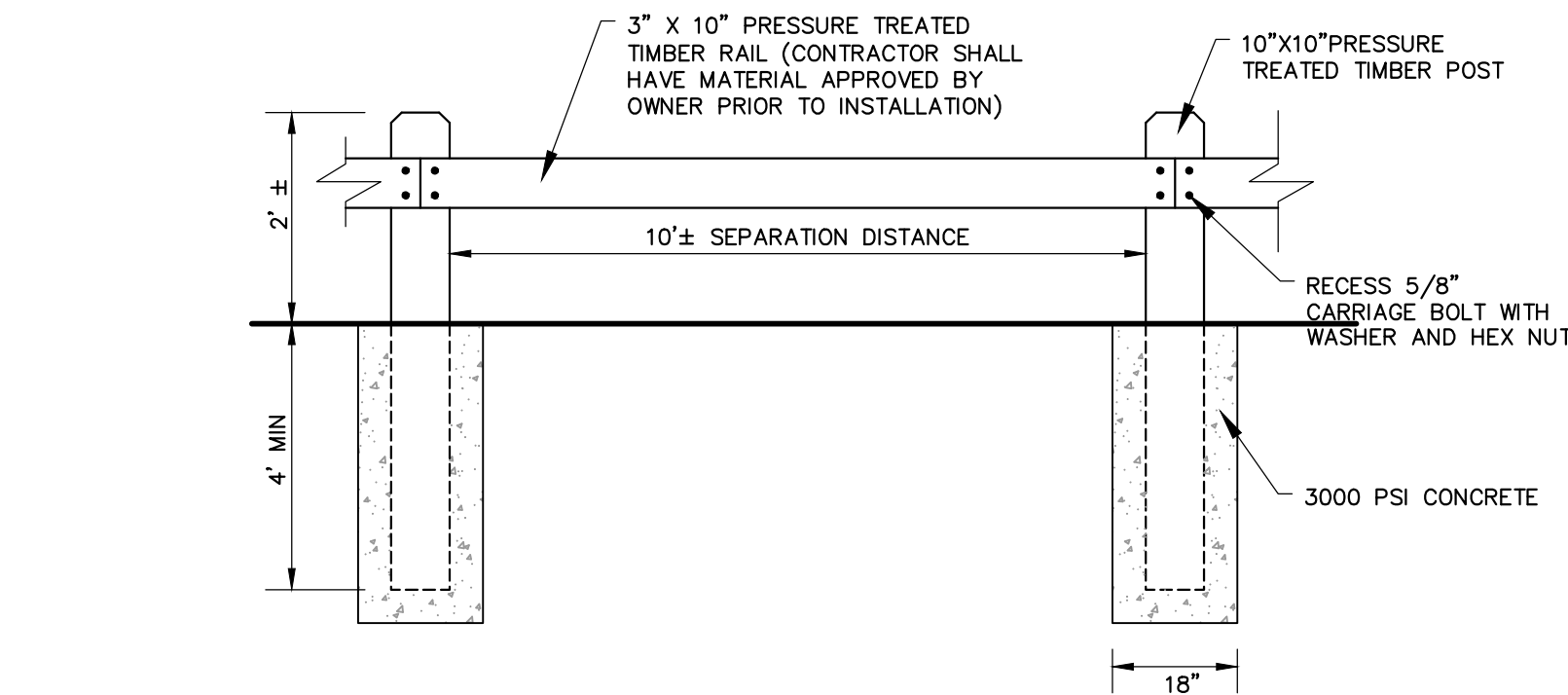


1 PAVEMENT SECTION

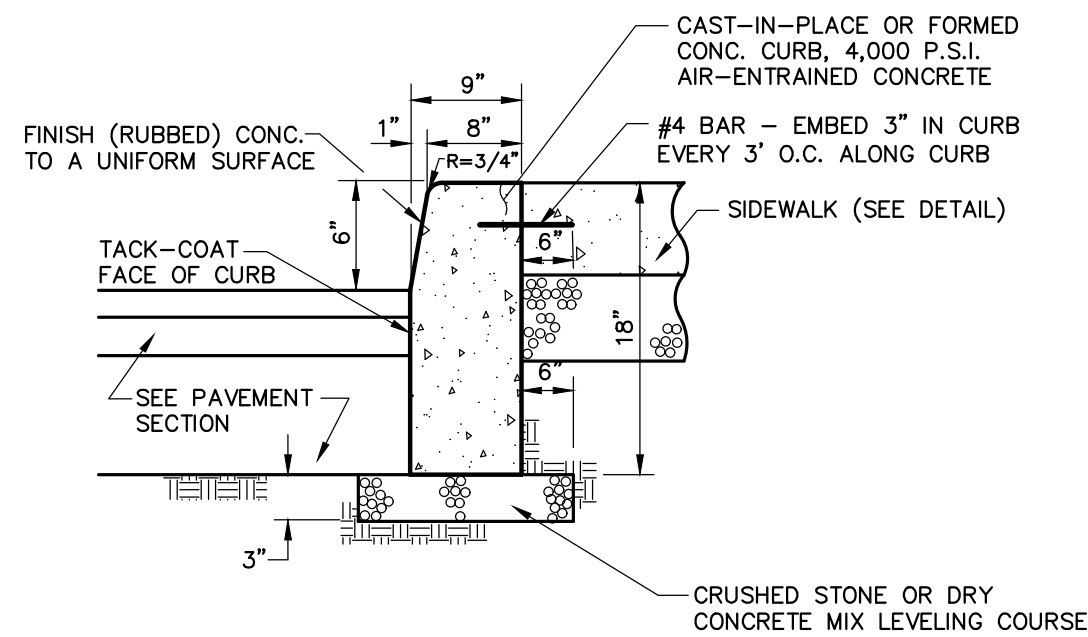
- NOTES:
- CONTRACTOR TO CLEAN AND TACK COAT BEFORE PLACING TOP COAT IF BINDER IS CONTAMINATED OR GREATER THAN 30 DAYS PASSES BETWEEN PLACEMENT OF BINDER AND TOP PAVEMENT SPECIFICATION NUMBERS REFERENCE THE 2008 NYSDOT STANDARD SPECIFICATION BOOK.



2 PAVEMENT MATCH



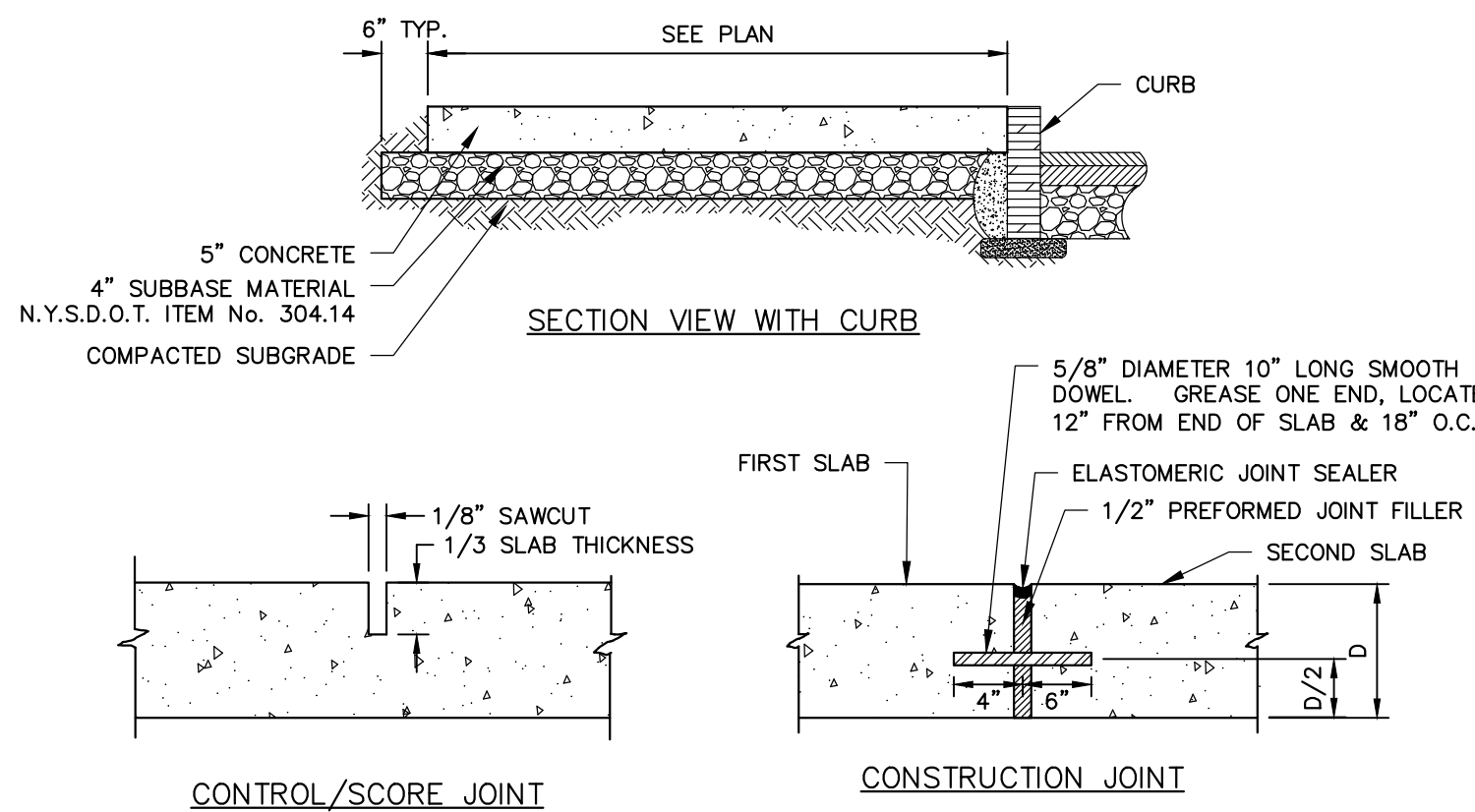
5 TIMBER GUIDE RAIL



NOTES:

- PROVIDE 7" REVEAL AT DROP INLETS
- PROVIDE CONSTRUCTION JOINTS AT 20' INTERVALS AND EXPANSION JOINTS AT 80' MAXIMUM SPACING. EXPANSION JOINTS SHALL BE FORMED WITH PRE-MOLDED BITUMINOUS JOINT FILLER AND REBAR TO PREVENT SEPARATION.

3 CONCRETE CURB

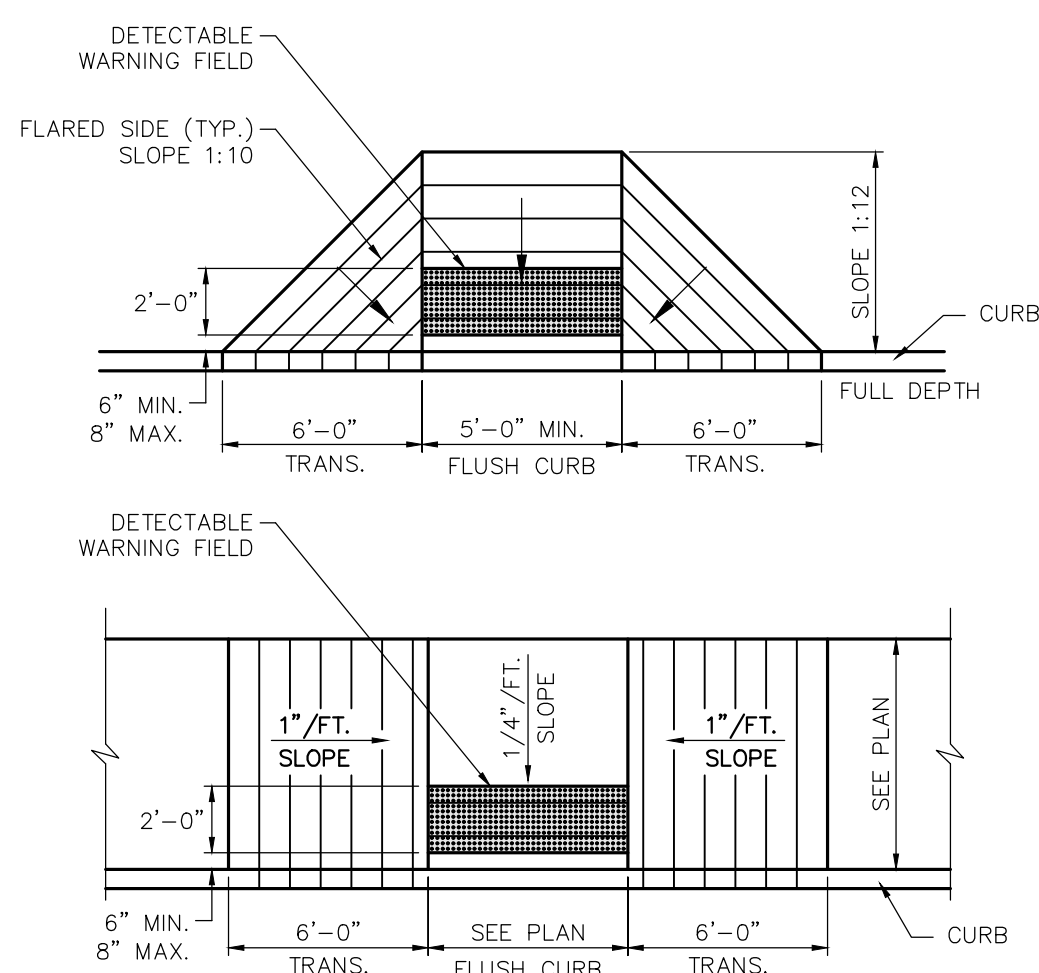
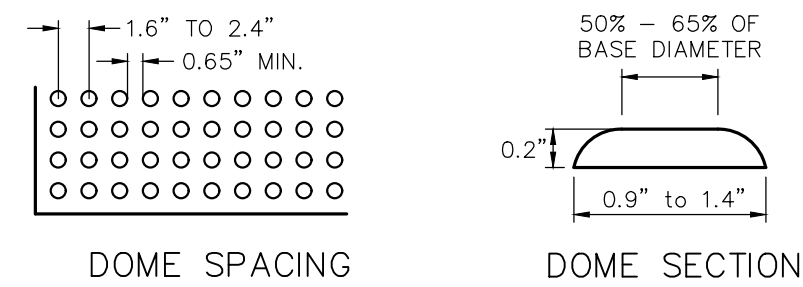


NOTES:

- CONCRETE SHALL BE 4000 PSI AIR-ENTRAINED MIX.
- CONCRETE SURFACE SHALL RECEIVE A BROOM FINISH (IF NOT SPECIFIED AS EXPOSED AGGREGATE CONCRETE) AND TWO COATS OF A MEMBRANE FORMING SEALER AT RATES SPECIFIED BY PRODUCT MANUFACTURER.
- EXPANSION JOINTS SHALL BE PROVIDED AT FIXED STRUCTURES AND AT LEAST EVERY 30' ALONG THE SIDEWALK.
- CONSTRUCTION JOINTS WITH DOWELS SHALL BE PROVIDED AT SUBSEQUENT POURS.
- CONTROL JOINTS SHALL BE LOCATED AS SHOWN ON PLAN AND IN ACCORDANCE WITH ACI 330-R92. THESE JOINTS SHALL BE COMPLETED WITHIN 24 HOURS OF CONCRETE PLACEMENT.
- SCORE PATTERN - SIDEWALK TO BE SCORED EVERY 5 FEET CREATING 5' X 5' SQUARES (MAY VARY IN CERTAIN AREAS). SCORING SHALL BE COORDINATED WITH OWNERS ONSITE REP PRIOR TO SCORING.
- SIDEWALKS SHALL HAVE A MINIMUM 0.5% AND MAXIMUM 2.0% CROSS SLOPE TO PROVIDE POSITIVE DRAINAGE. CROSS SLOPE SHALL PROVIDE POSITIVE DRAINAGE AWAY FROM BUILDINGS AND ENTRANCES.
- "SNAP-CAP" OR EQUAL SHALL BE USED FOR PROTECTING TOP EDGE OF EXPANSION JOINTS.
- SEE CURBING DETAIL FOR DOWELING WHEN ADJACENT TO CONCRETE CURBING.

4 CONCRETE SIDEWALK

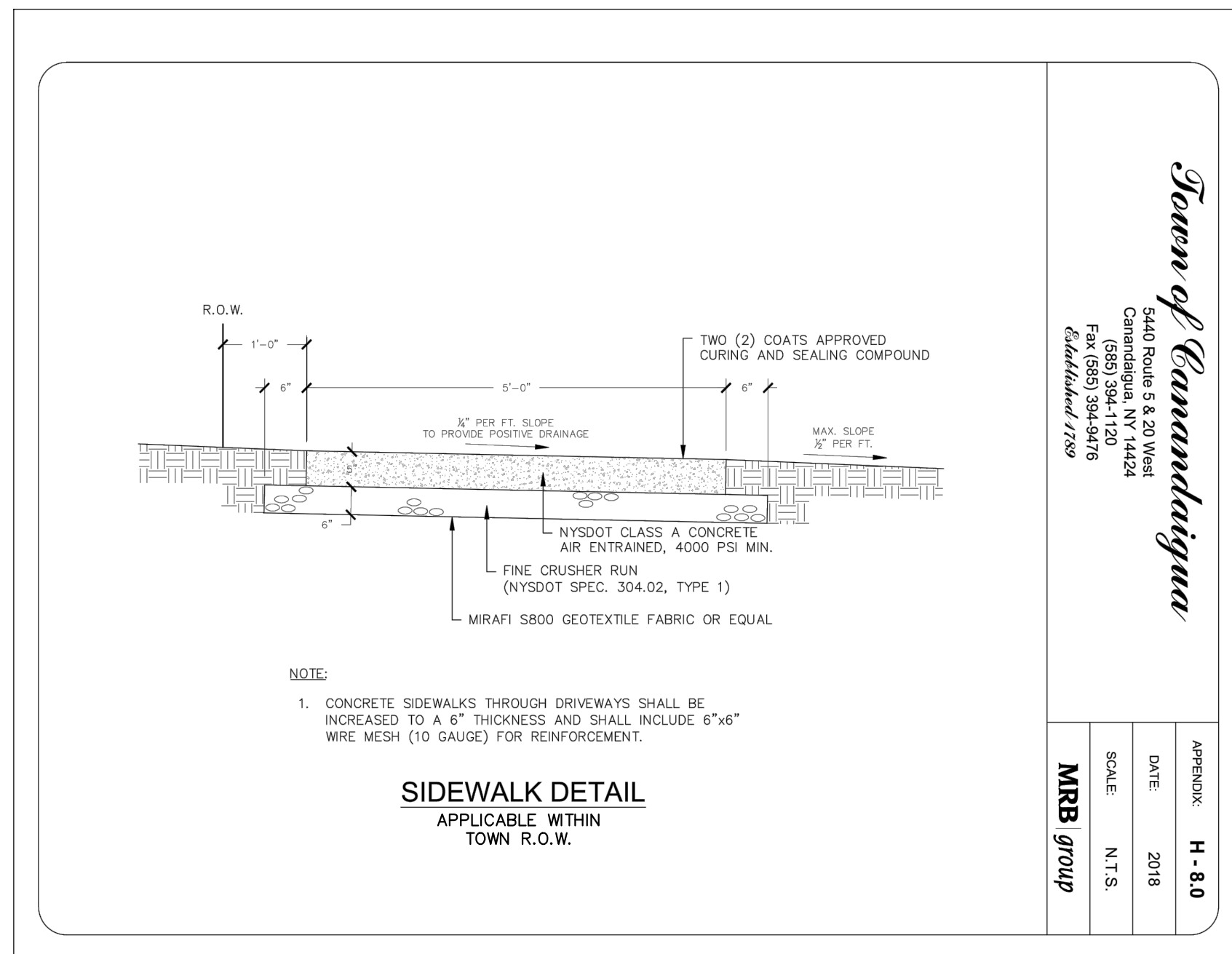
6 RESERVED



NOTES:

- SURFACE TEXTURE OF RAMP SHALL BE COARSE BROOM FINISHED TRANSVERSE TO RAMP.
- REFER TO TYPICAL SIDEWALK DETAIL FOR MATERIAL SPECIFICATIONS.
- DETECTABLE WARNING FIELD SHALL EXTEND THE FULL WIDTH OF CURB RAMP OR FLUSH SURFACE.
- DETECTABLE WARNING FIELD SHALL BE "DARK GREY" IN COLOR, UNLESS OTHERWISE SPECIFIED IN THE CONTRACT DOCUMENTS, OR AOE.
- DETECTABLE WARNING FIELD SHALL BE ADA SOLUTIONS WARNING SURFACE - "CAST-IN-PLACE TACTILE REPLACEABLE" OR EQUAL.

7 ACCESS RAMP



SIDEWALK DETAIL
APPLICABLE WITHIN
TOWN R.O.W.

Town of Canandaigua

6440 Route 5 & 20 West
Canandaigua, NY 14829
(609) 394-1120
Fax (609) 394-9478
Established 1792

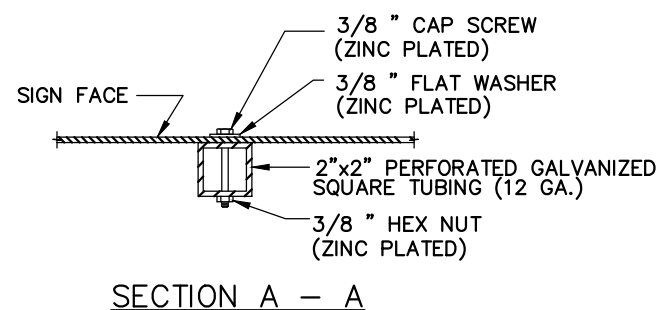
APPENDIX
DATE: 2018
SCALE: N.T.S.
MRB group



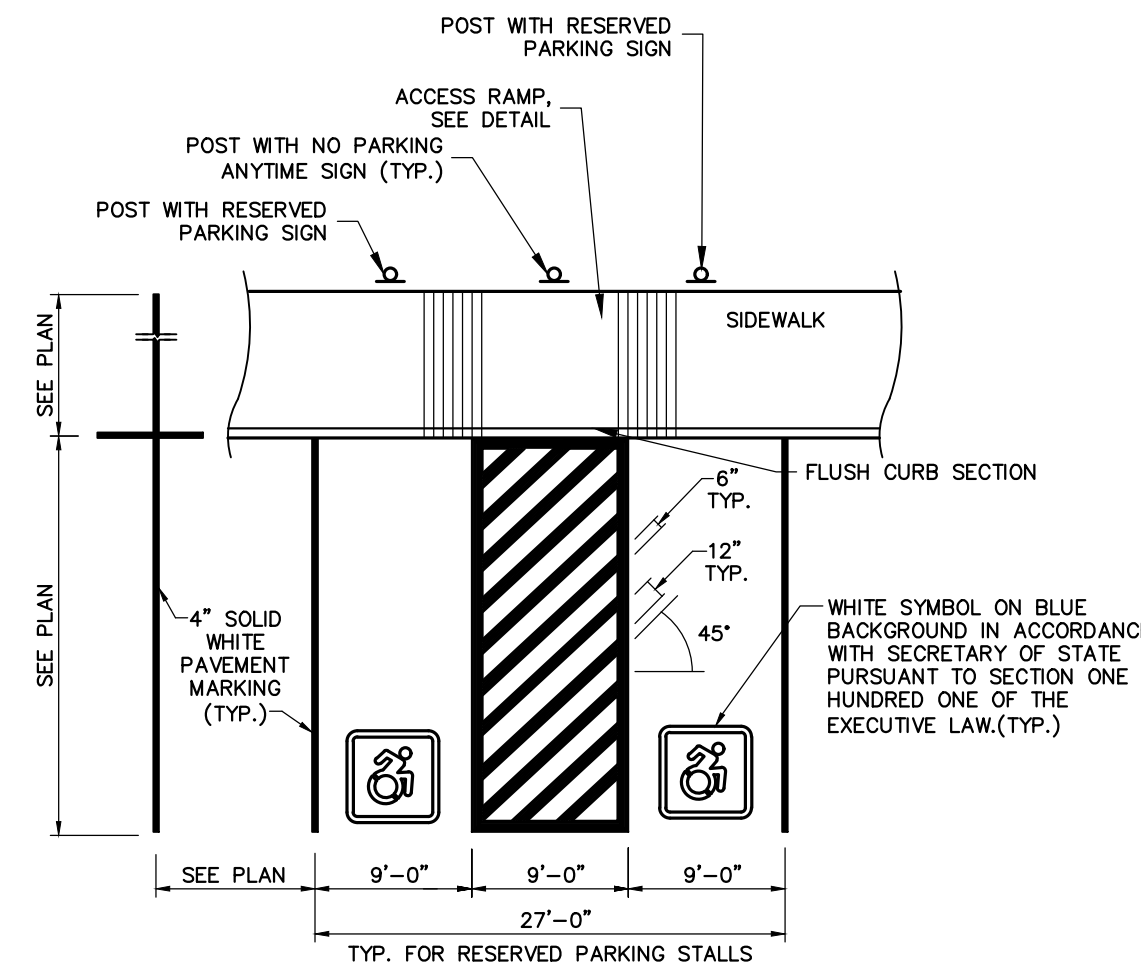
NO PARKING SIGN



RESERVED PARKING SIGN
SIGN ASSEMBLIES



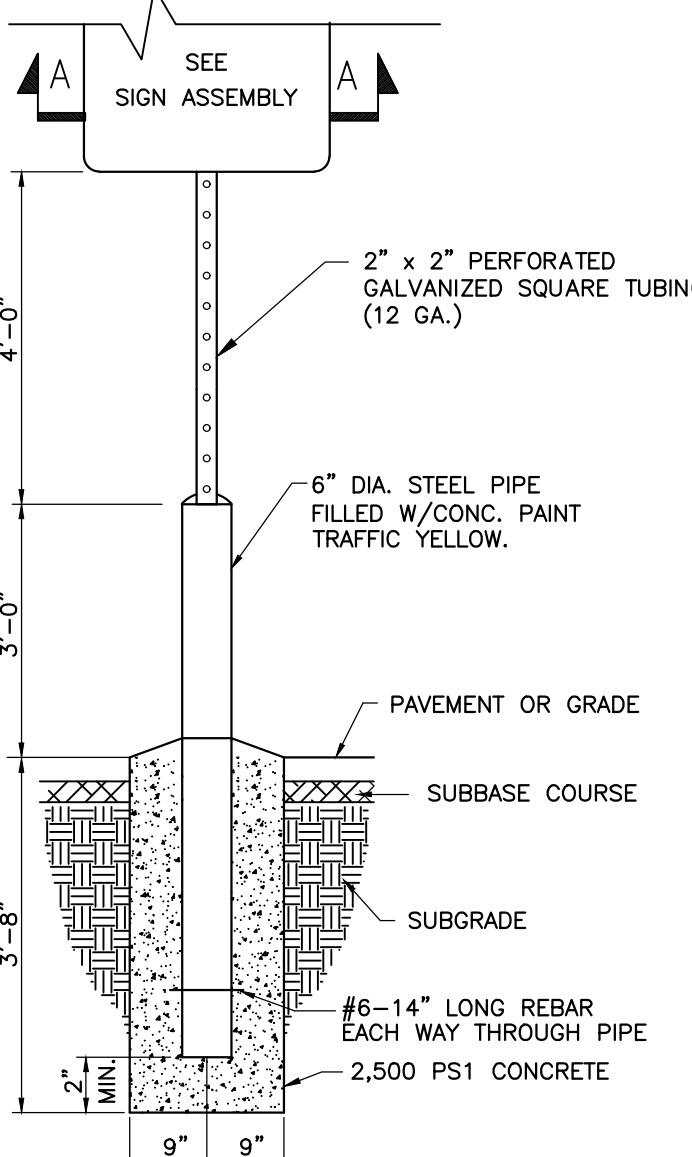
SECTION A - A



PARKING PLAN VIEW

NOTE:
ALL ACCESSIBLE PARKING AND ROUTES SHALL BE CONSTRUCTED CONSISTENT WITH THE MOST CURRENT ADA GUIDELINES. IN GENERAL, ALL PARKING AND LOADING ZONES SHALL HAVE NO MORE THAN 2.0% SLOPE IN ANY DIRECTION. PRIOR TO PAVING CONTRACTOR SHALL VERIFY SLOPES AND REPORT ANY SLOPES GREATER THAN 2% TO THE ENGINEER.

8 RESERVED PARKING AND SIGNAGE



SIGN POST

PRELIMINARY SITE PLANS
for
PARKSIDE DRIVE APARTMENTS

STATE OF NEW YORK

PARKSIDE DRIVE
ONTARIO COUNTY

TOWN OF CANANDAIGUA

JOB NO: 1419-22
SCALE: AS SHOWN
DRAWN: LJB
DESIGNED: MPT
DATE: 8/1/22

REVISIONS

DATE BY REVISION

IT IS A VIOLATION OF NEW YORK STATE EARTH OCEAN AND AERIAL SURVEYING LAW FOR ANY PERSON, UNDER ACTING UNDER THE DIRECTION OF A LICENSED PROFESSIONAL ENGINEER OR LAND SURVEYOR, TO ALTER ANY SURVEY OR MAP, WITHOUT BEARING THE SEAL OF A PROFESSIONAL ENGINEER OR LAND SURVEYOR. IF ANY OTHER VIOLATION OF THE SEAL OF A PROFESSIONAL ENGINEER OR LAND SURVEYOR IS VIOLATED, THE VIOLATING ENGINEER OR LAND SURVEYOR SHALL BE SUBJECT TO THE PENALTIES OF THE EARTH OCEAN AND AERIAL SURVEYING LAW, AND THE VIOLATING ENGINEER OR LAND SURVEYOR SHALL BE SUBJECT TO THE PENALTIES OF THE EARTH OCEAN AND AERIAL SURVEYING LAW, AND THE VIOLATING ENGINEER OR LAND SURVEYOR SHALL BE SUBJECT TO THE PENALTIES OF THE EARTH OCEAN AND AERIAL SURVEYING LAW.

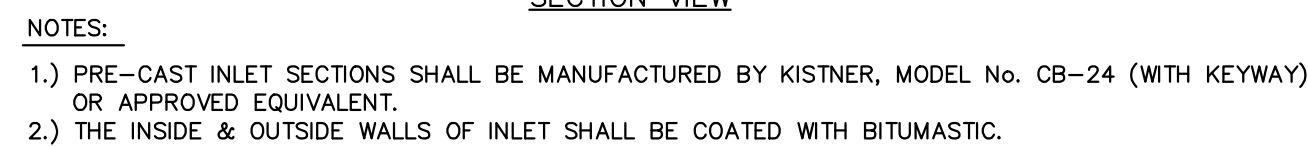
COPYRIGHT © 2022 MARATHON ENG.

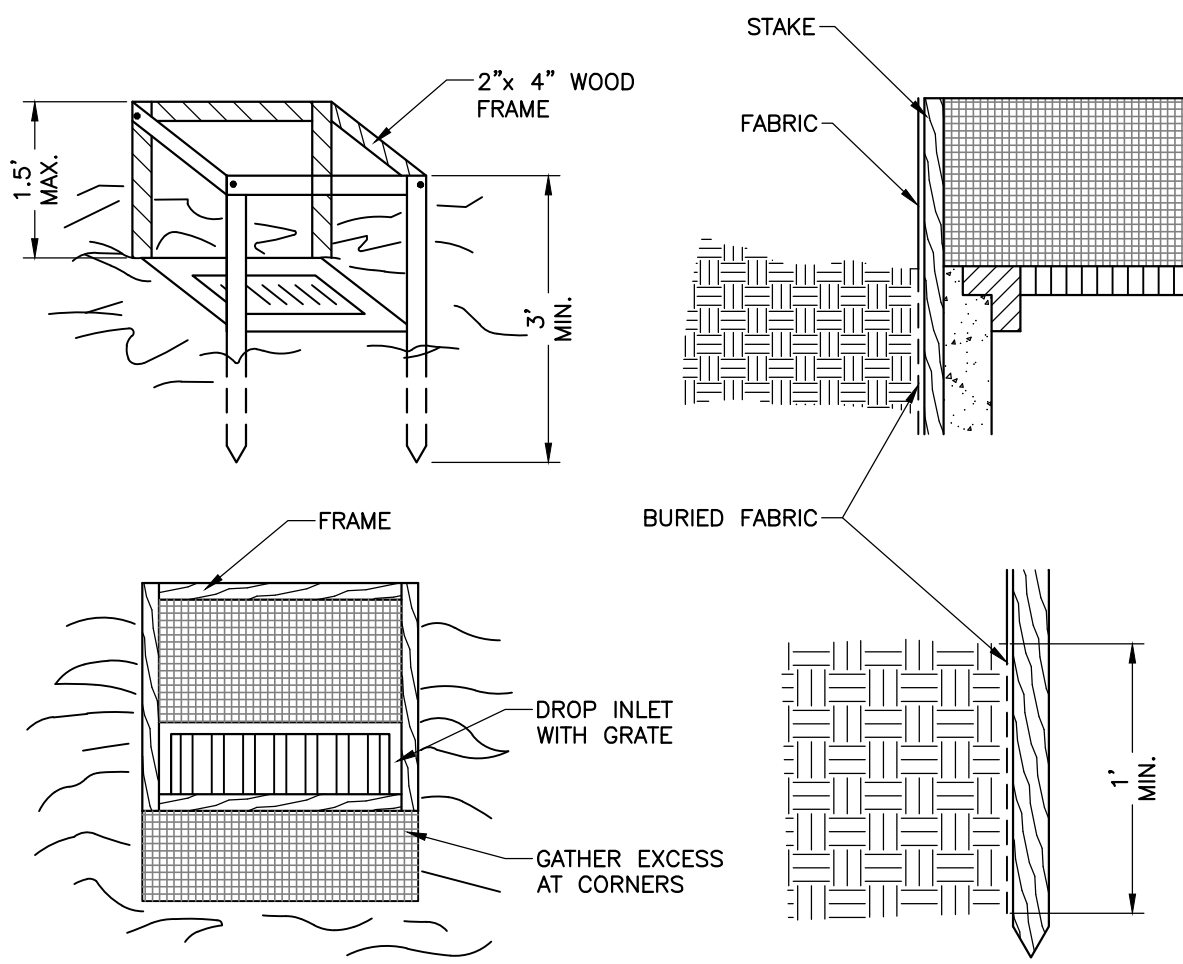


ROBERT P. BRINGLEY

DRAWING TITLE:
**CONSTRUCTION
DETAILS**

08 of 10
SHEET No: **C6.0**
1419-22
JOB No: DRAWING No:



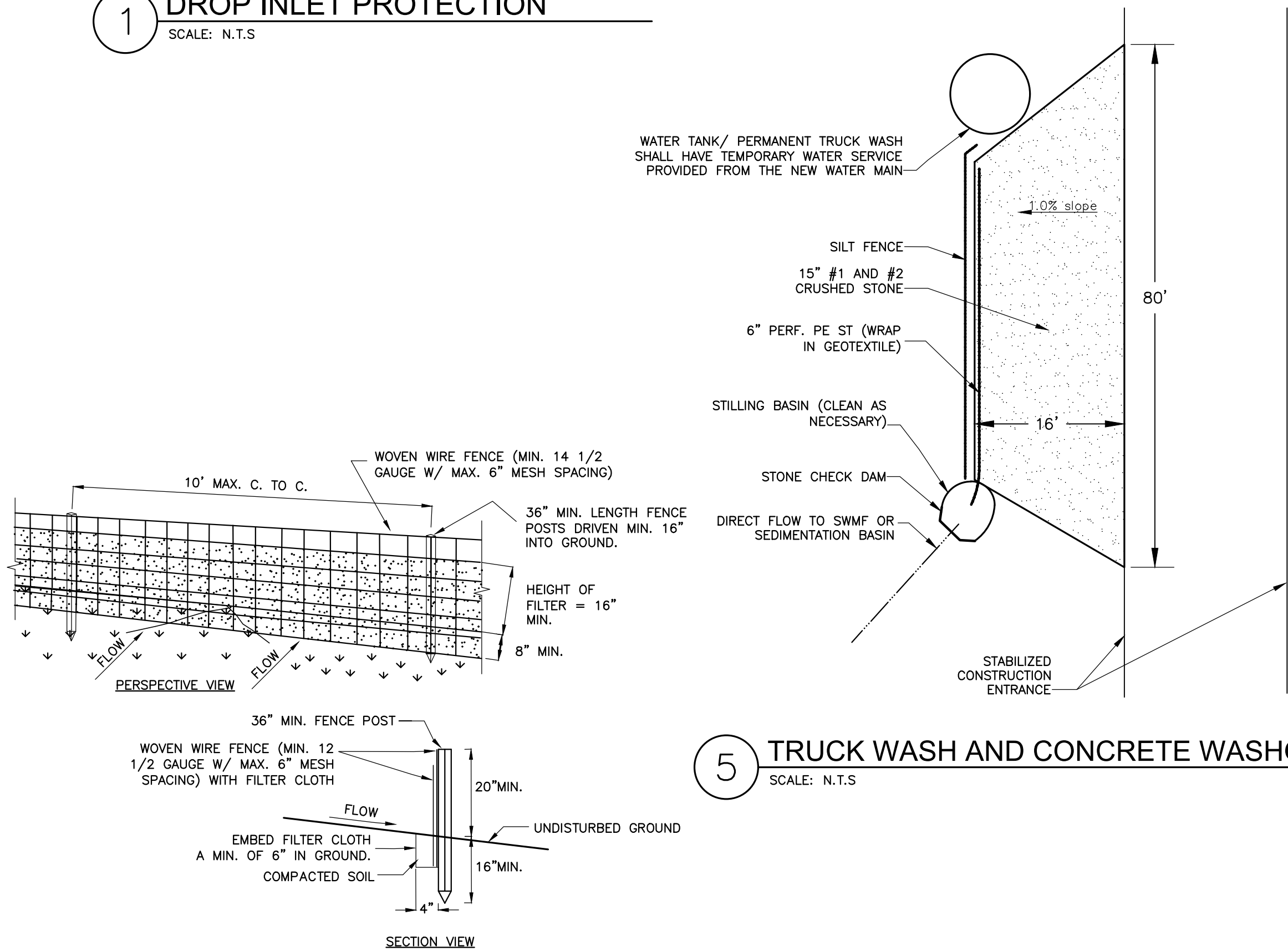


CONSTRUCTION SPECIFICATIONS

1. FILTER FABRIC SHALL HAVE AN EOS OF 40-85. BURLAP MAY BE USED FOR SHORT TERM APPLICATIONS.
2. CUT FABRIC FROM A CONTINUOUS ROLL TO ELIMINATE JOINTS. IF JOINTS ARE NEEDED THEY WILL BE OVERLAPPED TO THE NEXT STAKE.
3. STAKE MATERIALS WILL BE STANDARD 2" x 4" WOOD OR EQUIVALENT METAL WITH A MINIMUM LENGTH OF 3 FEET.
4. SPACE STAKES EVENLY AROUND INLET 3 FEET APART AND DRIVE A MINIMUM OF 18 INCHES DEEP. SPANS GREATER THAN 3 FEET MAY BE BRIDGED WITH THE USE OF WIRE MESH BEHIND THE FILTER FABRIC FOR SUPPORT.
5. FABRIC SHALL BE EMBEDDED 1 FOOT MINIMUM BELOW GROUND AND BACKFILLED. IT SHALL BE SECURELY FASTENED TO THE STAKES AND FRAME.
6. A 2" x 4" WOOD FRAME SHALL BE COMPLETED AROUND THE CREST OF THE FABRIC FOR OVER FLOW STABILITY.

1 DROP INLET PROTECTION

SCALE: N.T.S

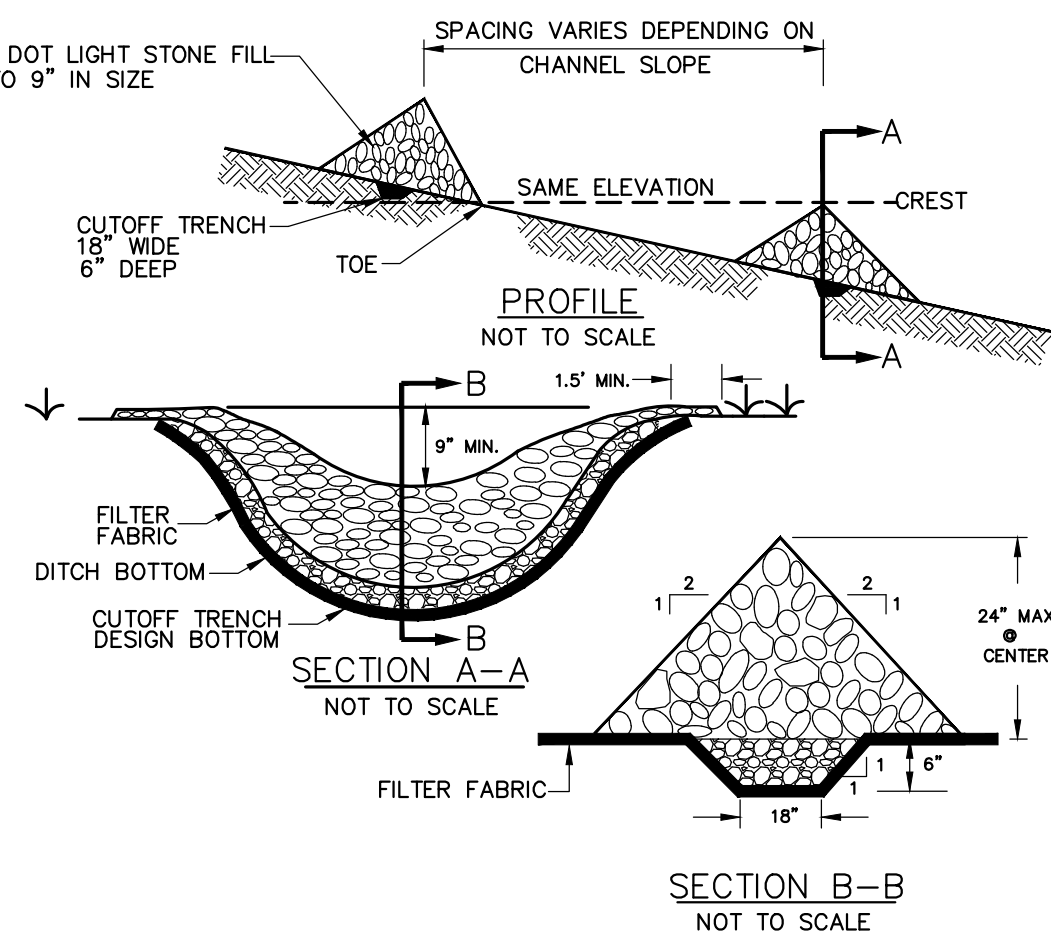


CONSTRUCTION SPECIFICATIONS

1. WOVEN WIRE FENCE TO BE FASTENED SECURELY TO FENCE POSTS WITH WIRE TIES OR STAPLES, POSTS SHALL BE STEEL "T" OF "U" TYPE OF HARDWOOD.
2. FILTER CLOTH TO BE FASTENED SECURELY TO WOVEN WIRE FENCE WITH TIES SPACED EVERY 24" AT TOP AND MID SECTION. FENCE SHALL BE WOVEN WIRE, 12 1/2 GAUGE, 6" MAXIMUM MESH OPENING.
3. WHEN TWO SECTIONS OF FILTER CLOTH ADJOIN EACH OTHER THEY SHALL BE OVERLAPPED BY SIX INCHES AND FOLDED, FILTER CLOTH SHALL BE EITHER FILTER X, MIRAFI 100X, STABLINKKA T140N, OR APPROVED EQUIVALENT.
4. PREFABRICATED UNITS SHALL BE GEOFAB, ENVIROFENCE, OR APPROVED EQUIVALENT.
5. MAINTENANCE SHALL BE PERFORMED AS NEEDED AND MATERIAL REMOVED WHEN "BULGES" DEVELOP IN THE SILT FENCE.
6. ENVIRO-FENCE WITH INTEGRAL MESH IS ACCEPTABLE SUBSTITUTE.

4 SILT FENCE

SCALE: N.T.S



CONSTRUCTION SPECIFICATIONS

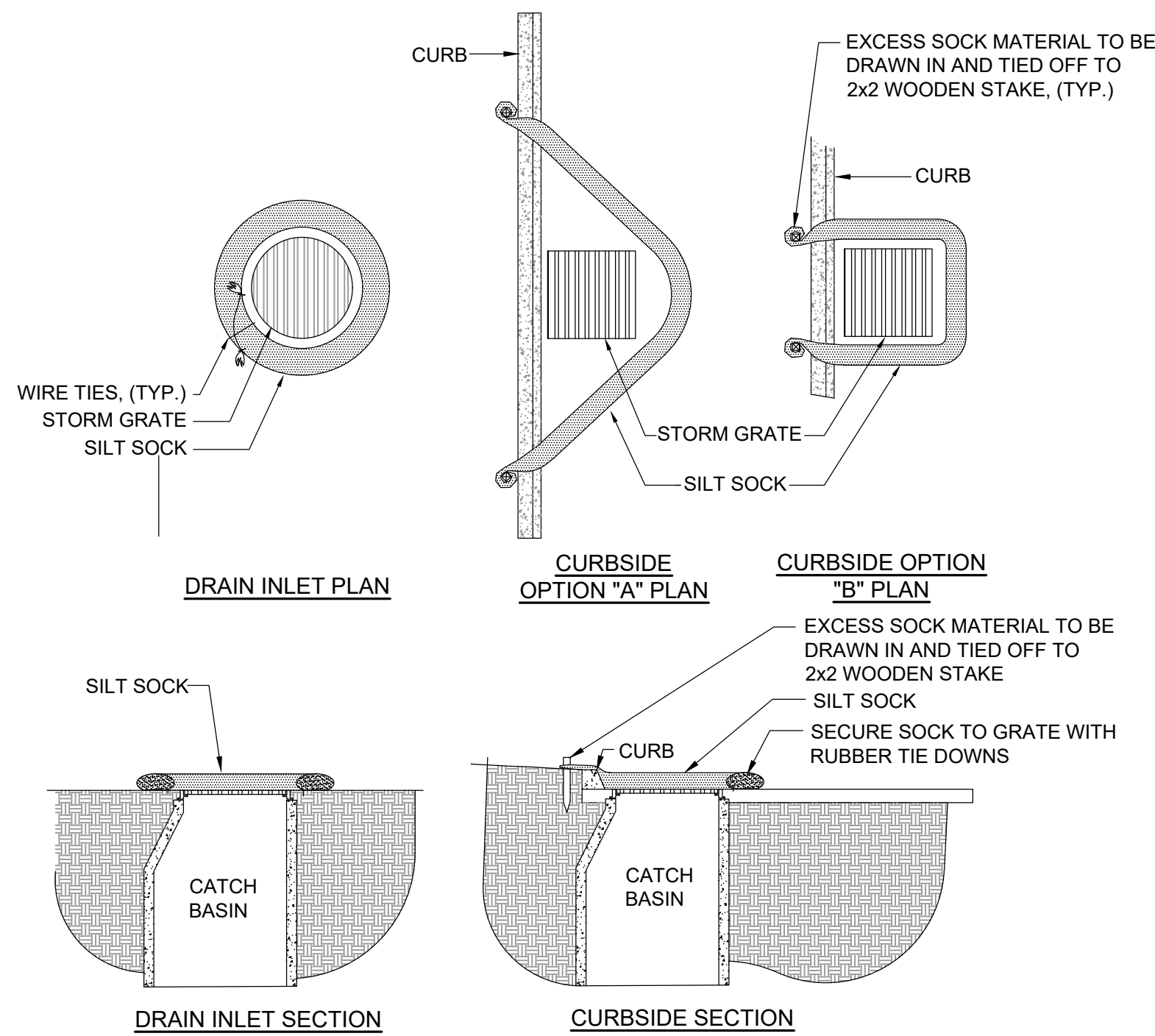
1. STONE WILL BE PLACED ON A FILTER FABRIC FOUNDATION TO THE LINES, GRADES AND LOCATION SHOWN ON IN THE PLAN
 2. SET SPACING OF CHECK DAMS TO ASSUME THAT THE ELEVATIONS OF THE CREST OF THE DOWNSTREAM DAM IS AT THE SAME ELEVATION OF THE UPSTREAM DAM.
 3. EXTEND THE STONE A MINIMUM OF 1.5 FEET BEYOND THE DITCH BANKS TO PREVENT CUTTING AROUND THE DAM.
 4. PROTECT THE CHANNEL DOWNSTREAM OF THE LOWEST CHECK DAM FROM SCOUR AND EROSION WITH STONE OR LINER AS APPROPRIATE.
 5. ENSURE THAT CHANNEL APPURTENANCES SUCH AS CULVERT ENTRANCES BELOW CHECK DAMS ARE NOT SUBJECT TO DAMAGE OF BLOCKAGE FROM DISPLACED STONES.
- MAXIMUM DRAINAGE AREA - 2 ACRES

2 STONE CHECK DAM

SCALE: N.T.S

5 TRUCK WASH AND CONCRETE WASHOUT

SCALE: N.T.S

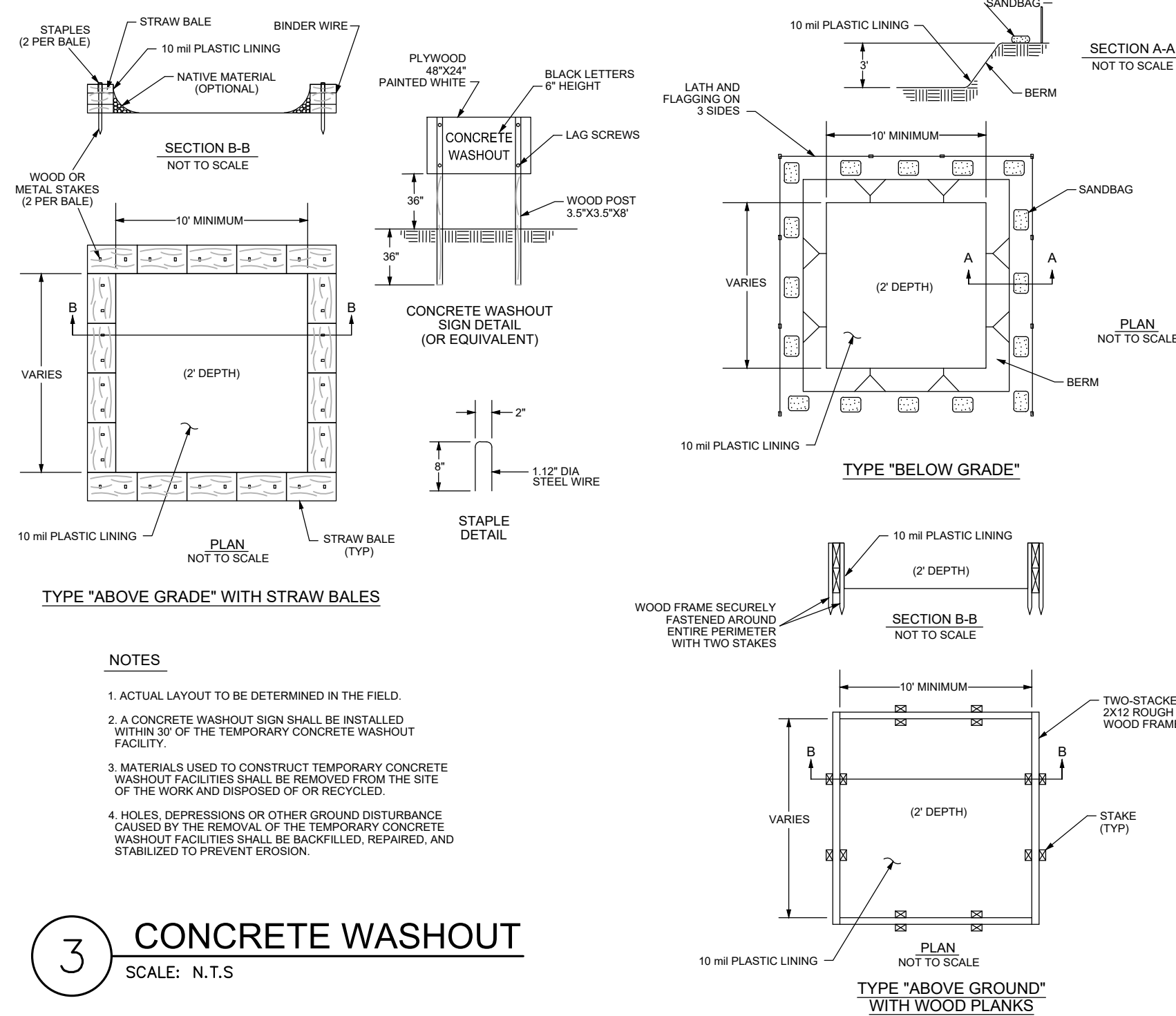


DRAIN INLET SECTION

- NOTES:
1. USE FILTREXX® SILT SOCK™ OR APPROVED EQUAL.
 2. FILTER MEDIA™ FILL TO MEET APPLICATION REQUIREMENTS.
 3. COMPOST MATERIAL TO BE DISPERSED ON SITE, AS DETERMINED BY ENGINEER.

6 PAVED SURFACE INLET PROTECTION

SCALE: N.T.S



NOTES

1. ACTUAL LAYOUT TO BE DETERMINED IN THE FIELD.
2. A CONCRETE WASHOUT SIGN SHALL BE INSTALLED WITHIN 30' OF THE TEMPORARY CONCRETE WASHOUT FACILITY.
3. MATERIALS USED TO CONSTRUCT TEMPORARY CONCRETE WASHOUT FACILITIES SHALL BE REMOVED FROM THE SITE OF THE WORK AND DISPOSED OF OR RECYCLED.
4. HOLES, DEPRESSIONS OR OTHER GROUND DISTURBANCE CAUSED BY THE REMOVAL OF THE TEMPORARY CONCRETE WASHOUT FACILITIES SHALL BE BACKFILLED, REPAIRED, AND STABILIZED TO PREVENT EROSION.

3 CONCRETE WASHOUT

SCALE: N.T.S

CONSTRUCTION SPECIFICATIONS

1. STONE SIZE - USE 2" STONE, OR RECLAIMED OR RECYCLED CONCRETE EQUIVALENT.
2. LENGTH - NOT LESS THAN 50 FEET (EXCEPT ON A SINGLE RESIDENCE LOT WHERE A 30 FOOT MIN. LENGTH WOULD APPLY).
3. THICKNESS - NOT LESS THAN SIX (6) INCHES.
4. WIDTH - TWELVE (12) FOOT MINIMUM, BUT NOT LESS THAN THE FULL WIDTH AT POINTS WHERE INGRESS OR EGRESS OCCURS, TWENTY-FOUR (24) FOOT IF SINGLE ENTRANCE TO SITE.
5. FILTER CLOTH - WILL BE PLACED OVER THE ENTIRE AREA PRIOR TO PLACING OF STONE.
6. SURFACE WATER - ALL SURFACE WATER FLOWING OR DIVERTED TOWARD CONSTRUCTION ENTRANCES SHALL BE PIPED ACROSS THE ENTRANCE. IF PIPING IS IMPRACTICAL, A MOUNTABLE BERM WITH 5:1 SLOPES WILL BE PERMITTED.
7. MAINTENANCE - THE ENTRANCE SHALL BE MAINTAINED IN A CONDITION WHICH WILL PREVENT TRACKING OR FLOWING OF SEDIMENT ONTO PUBLIC RIGHTS-OF-WAY, ALL SEDIMENT SPILLED, DROPPED, TACKED, OR WASHED ONTO PUBLIC RIGHTS-OF-WAY MUST BE REMOVED IMMEDIATELY.
8. WHEN WASHING IS REQUIRED, IT SHALL BE DONE ON AN AREA STABILIZED WITH STONE AND WHICH DRAINS INTO AN APPROVED SEDIMENT TRAPPING DEVICE.
9. PERIODIC INSPECTION AND NEEDED MAINTENANCE SHALL BE PROVIDED AFTER EACH RAIN.

U.S. DEPARTMENT OF AGRICULTURE
NATURAL RESOURCES CONSERVATION SERVICE
NEW YORK STATE DEPARTMENT OF ENVIRONMENTAL CONSERVATION
NEW YORK STATE SOIL & WATER CONSERVATION COMMITTEE

STABILIZED CONSTRUCTION ENTRANCE

PRELIMINARY SITE PLANS for PARKSIDE DRIVE APARTMENTS

STATE OF NEW YORK

PARKSIDE DRIVE
ONTARIO COUNTY

TOWN OF CANANDAIGUA

JOB NO: 1419-22
SCALE: AS SHOWN
DRAWN: LJB
DESIGNED: MPT
DATE: 8/1/22

REVISIONS		
DATE	BY	REVISION

IT IS A VIOLATION OF NEW YORK STATE EROSION CONTROL ACTS FOR ANY PERSON, UNDER THE DIRECTION OF A LICENSED PROFESSIONAL ENGINEER OR LAND SURVEYOR, TO ALTER ANY DRAWING BEARING THE SEAL OF A PROFESSIONAL ENGINEER OR LAND SURVEYOR, IF ANY, WITHIN THE SEAL OF A PROFESSIONAL ENGINEER OR LAND SURVEYOR, WITHOUT THE WRITING CONSENT OF THE ENGINEER OR LAND SURVEYOR. ANY VIOLATION OF THIS ACT IS A VIOLATION OF THE EROSION CONTROL ACTS, AND A VIOLATION OF THE EROSION CONTROL ACTS IS A VIOLATION OF THE EROSION CONTROL ACTS.

COPYRIGHT © 2022 MARATHON ENG.



DRAWING TITLE:
CONSTRUCTION DETAILS

10 of 10 SHEET No:	C6.2
1419-22 JOB No:	
	DRAWING No: