



FLOOR PLAN LEGEND		
<div>#</div> <div>#</div>	REFERENCE ENLARGED PLAN REFERENCE SHEET NUMBER	<div><div></div><div></div></div> SCHEDULED DOOR, FRAME & HARDWARE
Room name	UNIT TYPE	
101 150 SF	ROOM NUMBER SQUARE FOOTAGE	
<div></div>	INDICATES TYPE 'A' (ACCESSIBLE) UNIT (PER ICC A117.1-2009)	<div></div> SCHEDULED PARTITION
<div></div>	INDICATES TYPE 'B' (ACCESSIBLE) UNIT (PER ICC A117.1-2009)	
V/HAU	VISUAL / HEARING ACCOMMODATING UNITS	

- GENERAL NOTES**
- DIMENSIONS ARE TO FACE OF FRAMING, UON.
 - SEE A-420 FOR TYPICAL ENLARGED UNIT PLAN INFORMATION.
 - DOORS ARE TO BE INSTALLED WITH THEIR HINGE SIDE 4" FROM ADJACENT PERPENDICULAR WALL, UON.
 - RESILIENT CHANNELS ARE TO BE ON CORRIDOR SIDE OF UNIT WALLS, TYP. WHERE BRACED WALL PANELS OCCUR, RESILIENT CHANNELS ARE TO BE INTERRUPTED BY BRACED WALL PANEL. ENSURE FINISHED SURFACE OF DRYWALL IS FLUSH AT TRANSITIONS BETWEEN RESILIENT CHANNEL AND BRACED WALL PANEL SUBSTRATES AND AT LOCATIONS WHERE RESILIENT CHANNELS ENDS BUT WALL CONTINUES.

1 FIRST FLOOR PLAN
1/8" = 1'-0"

GROSS SQUARE FOOTAGE: 13,300 SF

SWBR

387 East Main Street Rochester NY 14604
585 232 8300 | rochester@swbr.com

HCR SHARS NO. :

Drawn By: KR
Checked By: RL
Project Manager: RL

These documents and all the ideas, arrangements, designs and plans indicated thereon or presented thereby are owned by and remain the property of SWBR and no part thereof shall be utilized by any person, firm, or corporation for any purpose whatsoever except with the specific written permission of SWBR. All rights reserved. ©

Revisions

Parkside Drive Apartments
SWBR Project Number 22096.00

Edgemere Development
277 Alexander Street Suite 400
Rochester, NY 14607

A-101

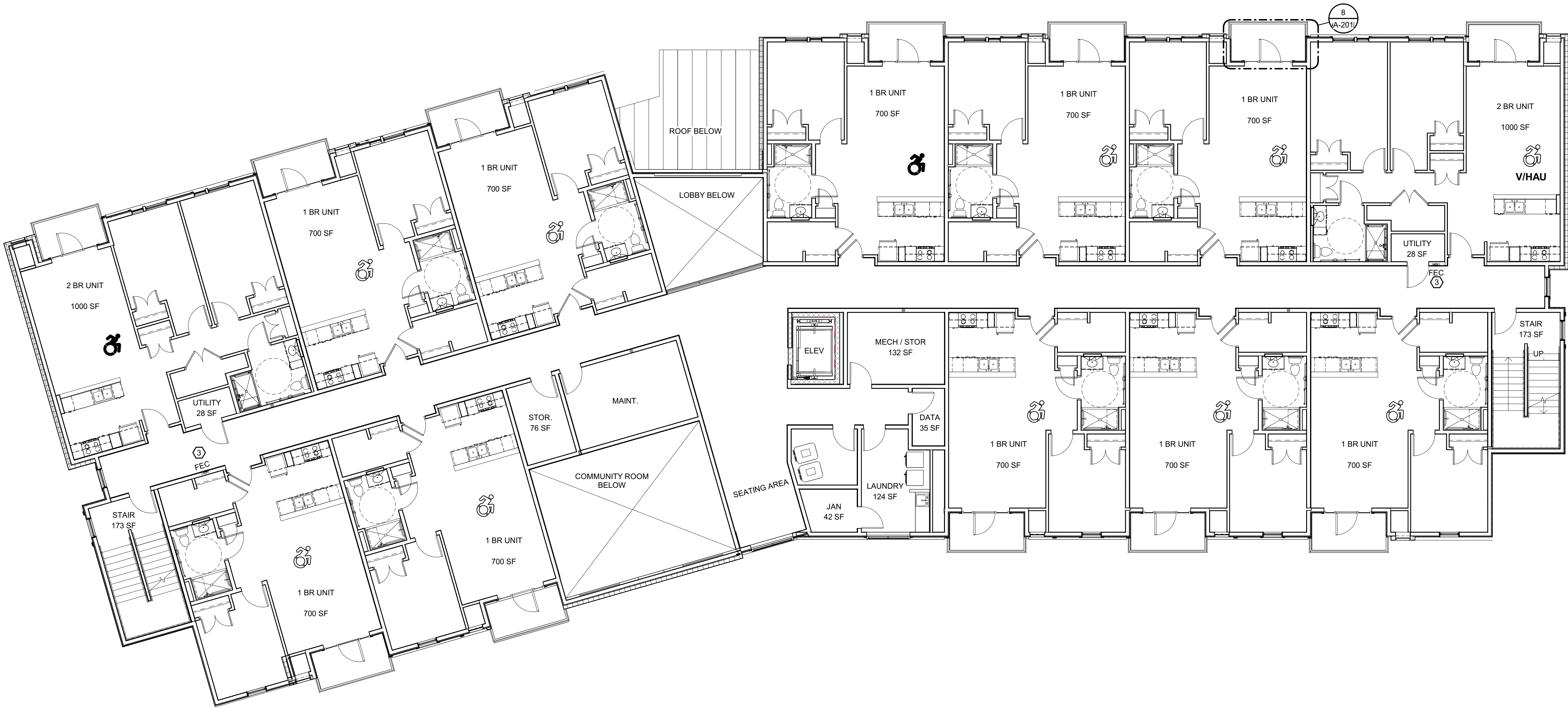
First Floor Plan

September 9, 2022
Planning Board
Submission

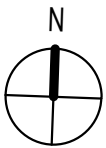
3

SECOND FLOOR PLAN

1/8" = 1'-0"



GROSS SQUARE FOOTAGE: 12,250 SF



FLOOR PLAN LEGEND

#

#

Room name

101

150 SF

UNIT TYPE

ROOM NUMBER

SQUARE FOOTAGE

INDICATES TYPE 'A' (ACCESSIBLE) UNIT (PER ICC A117.1-2009)

INDICATES TYPE 'B' (ACCESSIBLE) UNIT (PER ICC A117.1-2009)

V/HAU

SCHEDULED DOOR, FRAME & HARDWARE

SCHEDULED PARTITION

GENERAL NOTES

1. DIMENSIONS ARE TO FACE OF FRAMING, UON.

2. SEE A-420 FOR TYPICAL ENLARGED UNIT PLAN INFORMATION.

3. DOORS ARE TO BE INSTALLED WITH THEIR HINGE SIDE 4" FROM ADJACENT PERPENDICULAR WALL, UON.

4. RESILIENT CHANNELS ARE TO BE ON CORRIDOR SIDE OF UNIT WALLS, TYP. WHERE BRACED WALL PANELS OCCUR, RESILIENT CHANNELS ARE TO BE INTERRUPTED BY BRACED WALL PANEL. ENSURE FINISHED SURFACE OF DRYWALL IS FLUSH AT TRANSITIONS BETWEEN RESILIENT CHANNEL AND BRACED WALL PANEL SUBSTRATES AND AT LOCATIONS WHERE RESILIENT CHANNELS ENDS BUT WALL CONTINUES.

SWBR

387 East Main Street Rochester NY 14604
585 232 8300 | rochester@swbr.com

HCR SHARS NO. :

Drawn By: KR
Checked By: RL
Project Manager: RL

These documents and all the ideas, arrangements, designs and plans indicated thereon or presented thereby are owned by and remain the property of SWBR and no part thereof shall be utilized by any person, firm, or corporation for any purpose whatsoever except with the specific written permission of SWBR. All rights reserved. ©

Revisions

Parkside Drive Apartments
SWBR Project Number 22096.00

Edgemere Development
277 Alexander Street Suite 400
Rochester, NY 14607

A-102

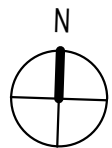
Second Floor Plan

September 9, 2022
Planning Board
Submission



1 THIRD FLOOR PLAN
1/8" = 1'-0"

GROSS SQUARE FOOTAGE: 12,920 SF



FLOOR PLAN LEGEND

	REFERENCE ENLARGED PLAN REFERENCE SHEET NUMBER		SCHEDULED DOOR, FRAME & HARDWARE
Room name	UNIT TYPE		
101	ROOM NUMBER		
150 SF	SQUARE FOOTAGE		
	INDICATES TYPE 'A' (ACCESSIBLE) UNIT (PER ICC A117.1-2009)		SCHEDULED PARTITION
	INDICATES TYPE 'B' (ACCESSIBLE) UNIT (PER ICC A117.1-2009)		
V/HAU	VISUAL / HEARING ACCOMMODATING UNITS		

GENERAL NOTES

- DIMENSIONS ARE TO FACE OF FRAMING, UON.
- SEE A-420 FOR TYPICAL ENLARGED UNIT PLAN INFORMATION.
- DOORS ARE TO BE INSTALLED WITH THEIR HINGE SIDE 4" FROM ADJACENT PERPENDICULAR WALL, UON.
- RESILIENT CHANNELS ARE TO BE ON CORRIDOR SIDE OF UNIT WALLS, TYP. WHERE BRACED WALL PANELS OCCUR, RESILIENT CHANNELS ARE TO BE INTERRUPTED BY BRACED WALL PANEL. ENSURE FINISHED SURFACE OF DRYWALL IS FLUSH AT TRANSITIONS BETWEEN RESILIENT CHANNEL AND BRACED WALL PANEL SUBSTRATES AND AT LOCATIONS WHERE RESILIENT CHANNELS ENDS BUT WALL CONTINUES.

SWBR

387 East Main Street Rochester NY 14604
585 232 8300 | rochester@swbr.com

HCR SHARS NO. :

Drawn By: KR
Checked By: RL
Project Manager: RL

These documents and all the ideas, arrangements, designs and plans indicated thereon or presented thereby are owned by and remain the property of SWBR and no part thereof shall be utilized by any person, firm, or corporation for any purpose whatsoever except with the specific written permission of SWBR. All rights reserved. ©

Revisions

Parkside Drive Apartments
SWBR Project Number 22096.00

Edgemere Development
277 Alexander Street Suite 400
Rochester, NY 14607

A-103

Third Floor Plan

September 9, 2022
Planning Board
Submission

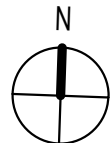


1

FOURTH FLOOR PLAN

1/8" = 1'-0"

GROSS SQUARE FOOTAGE: 12,920 SF



FLOOR PLAN LEGEND

#

#

Room name

101

150 SF

UNIT TYPE

ROOM NUMBER

SQUARE FOOTAGE

SCHEDULED DOOR, FRAME & HARDWARE

SCHEDULED PARTITION

INDICATES TYPE 'A' (ACCESSIBLE) UNIT (PER ICC A117.1-2009)

INDICATES TYPE 'B' (ACCESSIBLE) UNIT (PER ICC A117.1-2009)

V/HAU

INDICATES TYPE 'A' (ACCESSIBLE) UNIT (PER ICC A117.1-2009)

INDICATES TYPE 'B' (ACCESSIBLE) UNIT (PER ICC A117.1-2009)

VISUAL / HEARING ACCOMMODATING UNITS

GENERAL NOTES

1. DIMENSIONS ARE TO FACE OF FRAMING, UON.

2. SEE A-420 FOR TYPICAL ENLARGED UNIT PLAN INFORMATION.

3. DOORS ARE TO BE INSTALLED WITH THEIR HINGE SIDE 4" FROM ADJACENT PERPENDICULAR WALL, UON.

4. RESILIENT CHANNELS ARE TO BE ON CORRIDOR SIDE OF UNIT WALLS, TYP. WHERE BRACED WALL PANELS OCCUR, RESILIENT CHANNELS ARE TO BE INTERRUPTED BY BRACED WALL PANEL. ENSURE FINISHED SURFACE OF DRYWALL IS FLUSH AT TRANSITIONS BETWEEN RESILIENT CHANNEL AND BRACED WALL PANEL SUBSTRATES AND AT LOCATIONS WHERE RESILIENT CHANNELS ENDS BUT WALL CONTINUES.

SWBR

387 East Main Street Rochester NY 14604
585 232 8300 | rochester@swbr.com

HCR SHARS NO. :

Drawn By: KR

Checked By: RL

Project Manager: RL

These documents and all the ideas, arrangements, designs and plans indicated thereon or presented thereby are owned by and remain the property of SWBR and no part thereof shall be utilized by any person, firm, or corporation for any purpose whatsoever except with the specific written permission of SWBR. All rights reserved. ©

Revisions

Parkside Drive Apartments

SWBR Project Number 22096.00

Edgemere Development

277 Alexander Street Suite 400

Rochester, NY 14607

A-104

Fourth Floor Plan

September 9, 2022

Planning Board

Submission



Parkside Drive Apartments
Edgemere Development

SWBR

9/8/2022 4:39:54 PM

FILE PATH: AutodesK Docs/22096.00 Edgemere Canandaigua Apartments/22096.00 Edgemere Parkside Drive Apartments.rvt

HCR SHARS NO. :

Drawn By: KR
Checked By: KR
Project Manager: RL

These documents and all the ideas, arrangements, designs and plans indicated thereon or presented thereby are owned by and remain the property of SWBR and no part thereof shall be utilized by any person, firm, or corporation for any purpose whatsoever except with the specific written permission of SWBR. All rights reserved. ©

Revisions

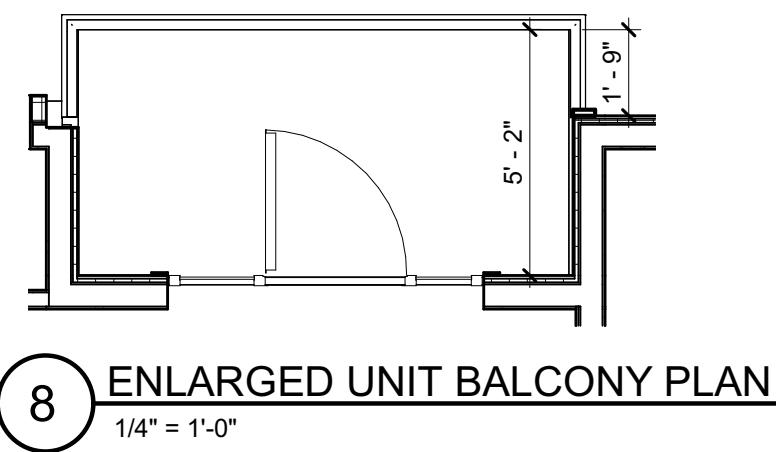
Parkside Drive Apartments
SWBR Project Number 22096.00

Edgemere Development
277 Alexander Street Suite 400
Rochester, NY 14607

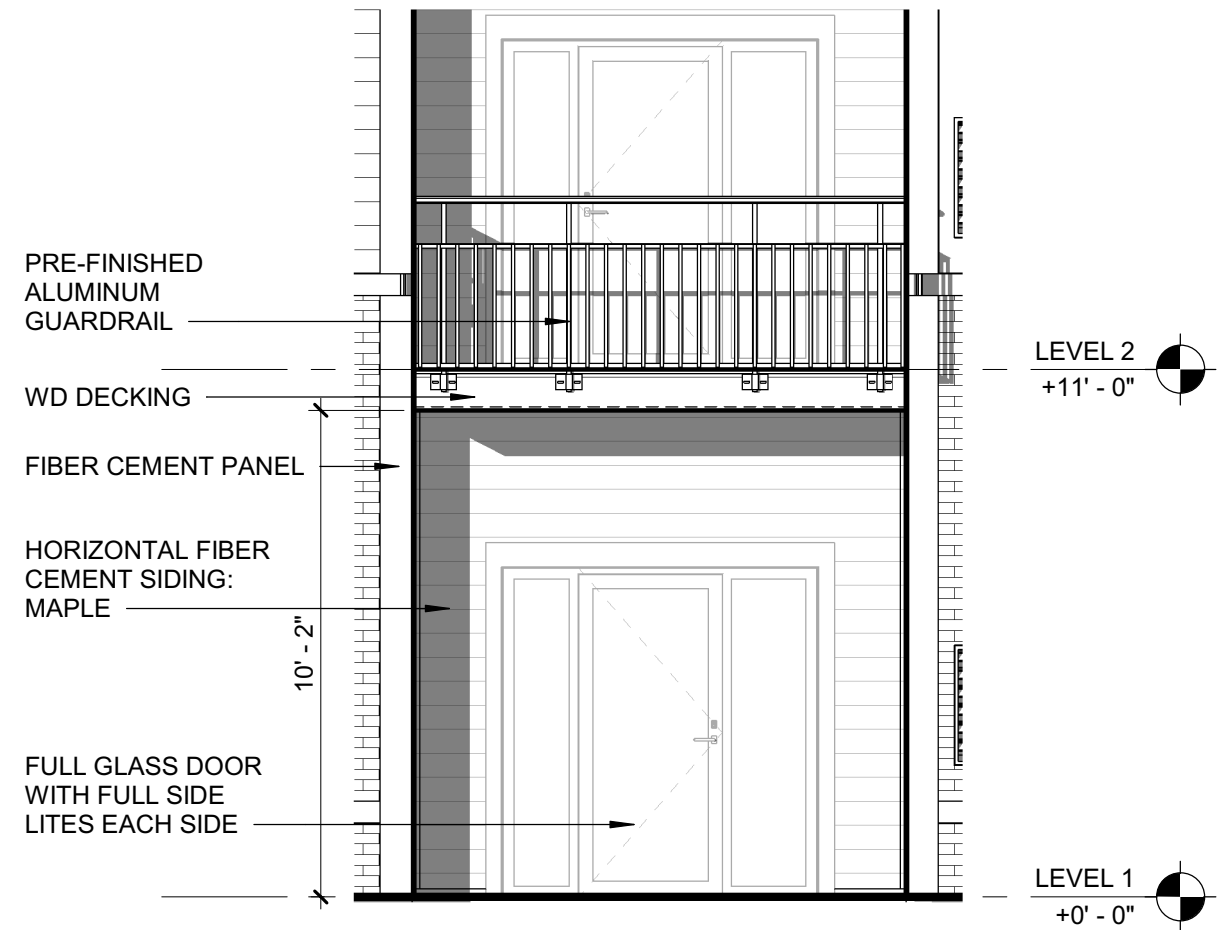
A-201

Exterior Elevations and
Details

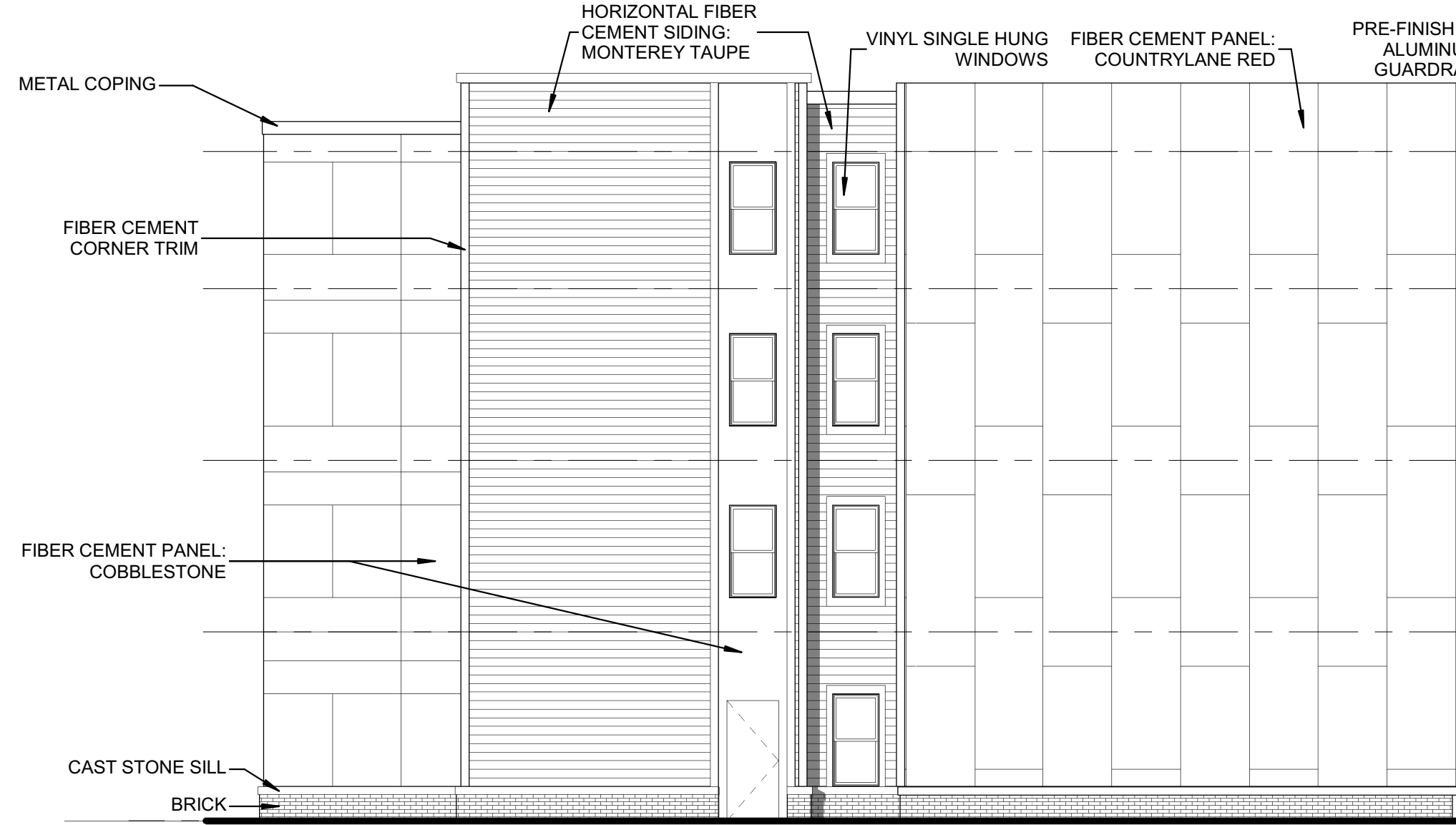
September 9, 2022
Planning Board
Submission



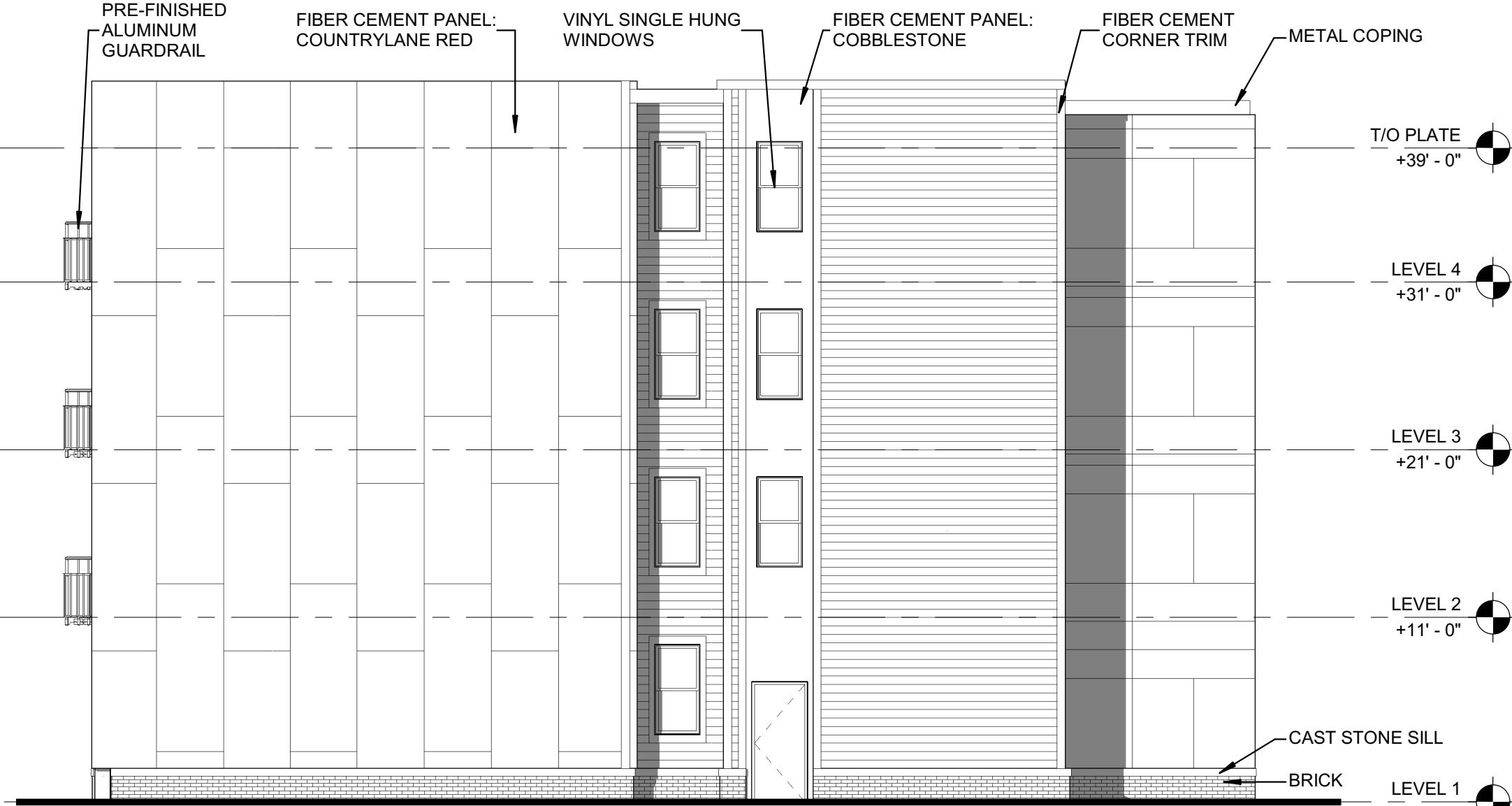
8 ENLARGED UNIT BALCONY PLAN
1/4" = 1'-0"



7 ENLARGED BALCONY ELEVATION
1/4" = 1'-0"



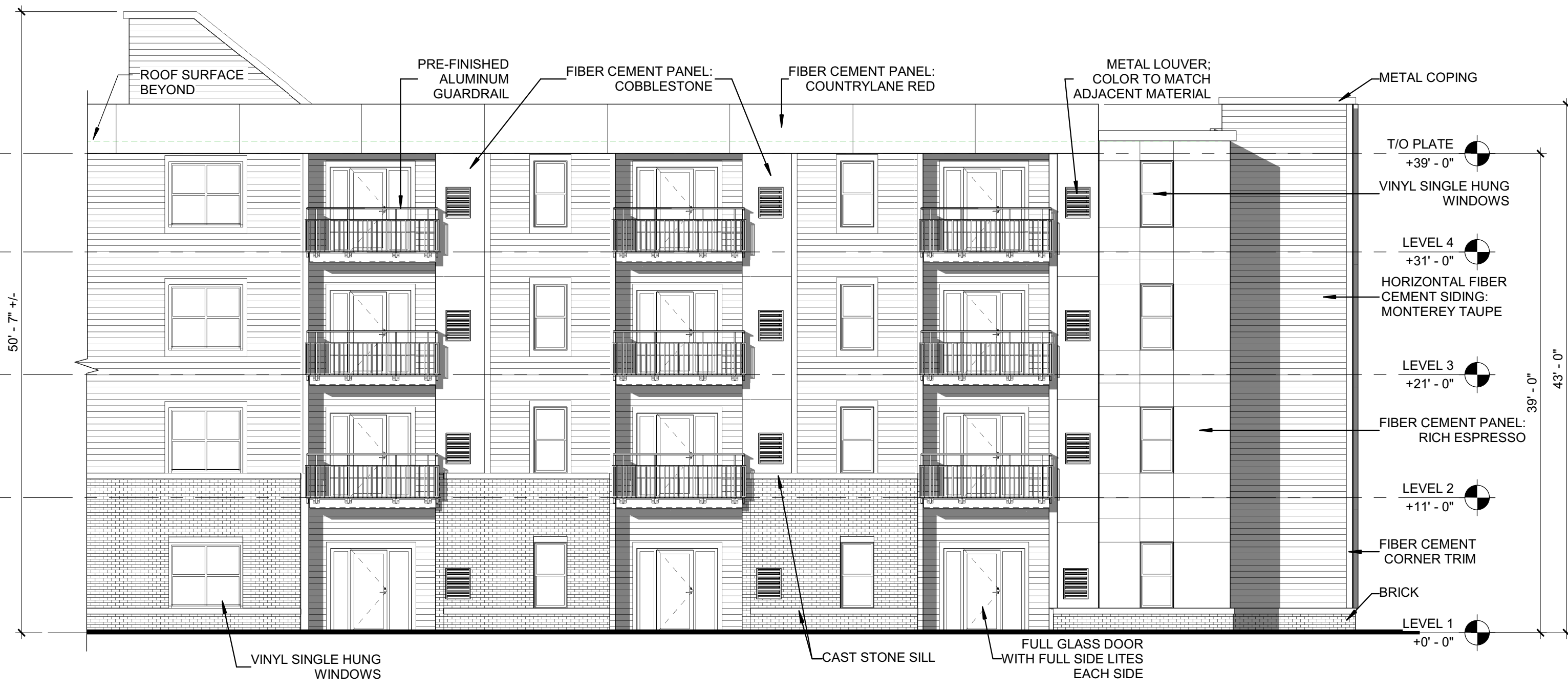
6 EXTERIOR ELEVATION - EAST
1/8" = 1'-0"



5 EXTERIOR ELEVATION - WEST
1/8" = 1'-0"



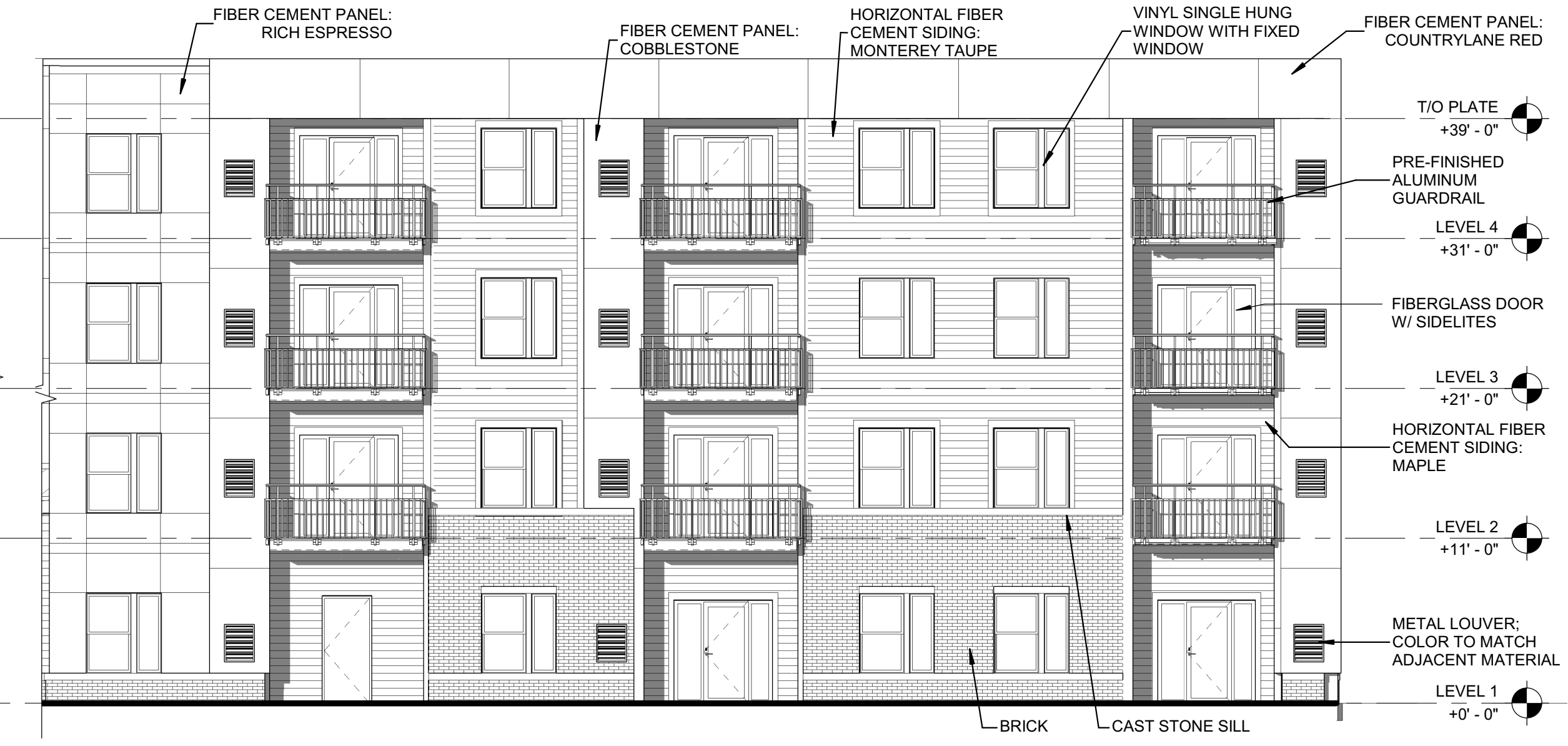
4 EXTERIOR ELEVATION - SOUTHWEST
1/8" = 1'-0"



3 EXTERIOR ELEVATION - SOUTHEAST
1/8" = 1'-0"



2 EXTERIOR ELEVATION - NORTHEAST
1/8" = 1'-0"



1 EXTERIOR ELEVATION - NORTHWEST
1/8" = 1'-0"