

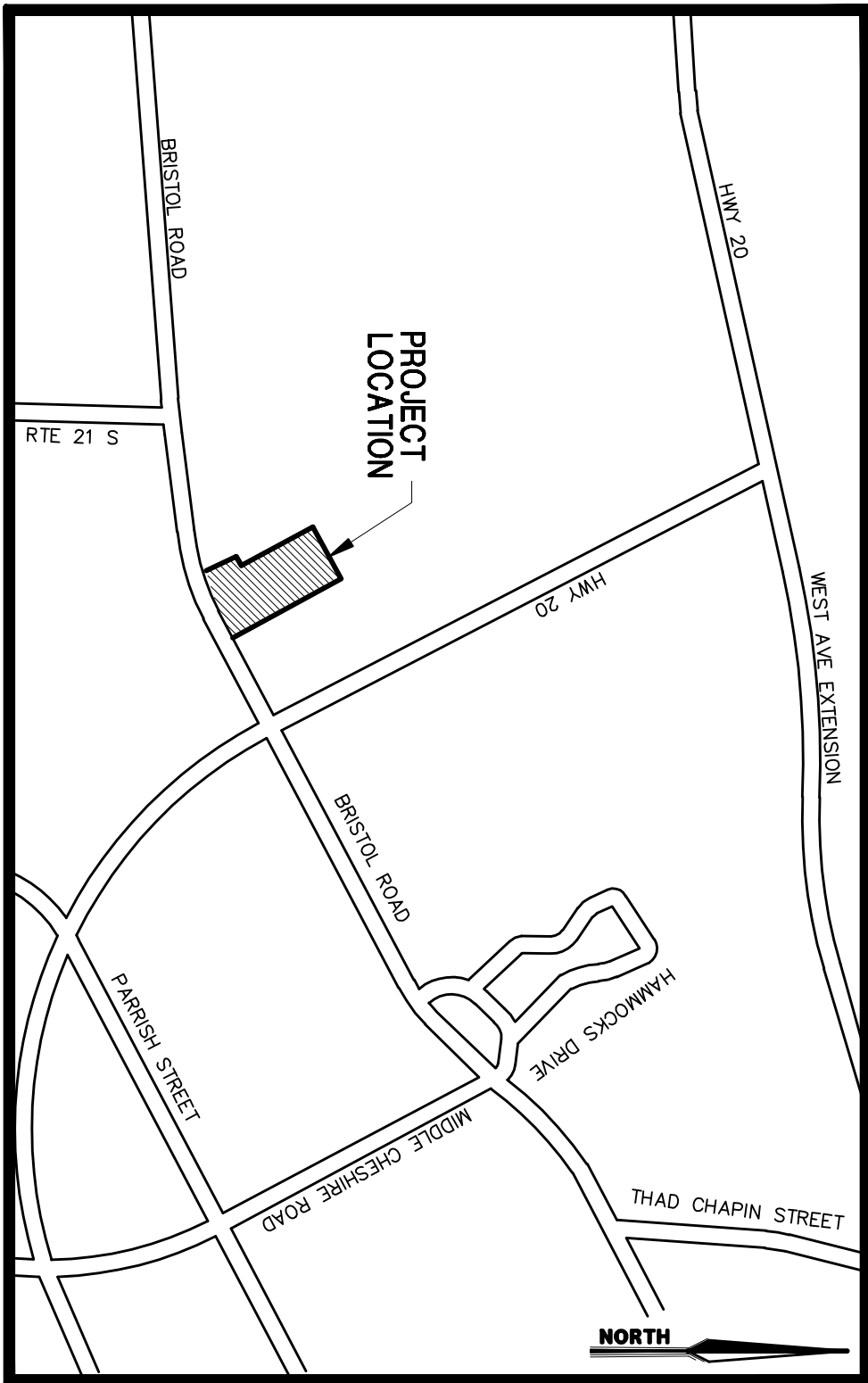
SITE CONSTRUCTION DRAWINGS

FOR:

DEPAUL HORIZONS ADDITIONS
3132 NY STATE ROUTE 21

SITUATE IN:

TOWN OF CANANDAIGUA • ONTARIO COUNTY • NEW YORK



LOCATION MAP

NOT TO SCALE

PARRONE

engineering

THE PLANO WORKS

349 WEST COMMERCIAL STREET

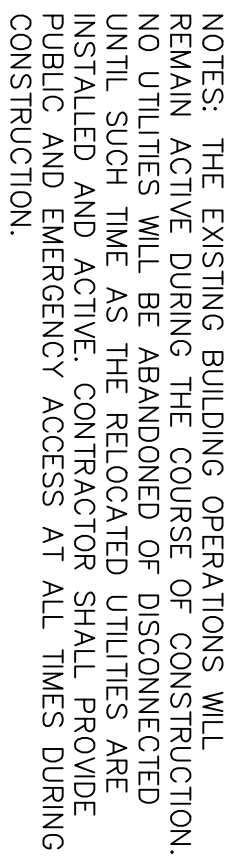
SUITE 3200

EAST ROCHESTER, NEW YORK 14445

T 585.586.0200 F 585.586.6752

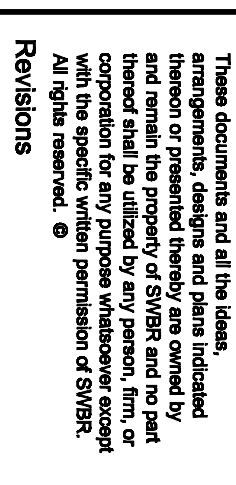
DRAWING INDEX:

SHT. NO.	DESCRIPTION	DWG. NO.
—	TITLE SHEET, LOCATION MAP & DRAWING INDEX	—
1	PROJECT NOTES, INFORMATION & SPECIFICATIONS	C-000
2	DEMOLITION PLAN	C-100
3	SITE PLAN	C-200
4	UTILITY PLAN	C-300
5	GRADING & EROSION CONTROL PLAN	C-400
6	LIGHTING PLAN	C-500
7	CONSTRUCTION DETAILS	C-601
8	CONSTRUCTION DETAILS	C-602
9	ADDITION-EXTERIOR ELEVATIONS	A-201
10	OVERALL LANDSCAPING PLAN	L-101



APPROVED BY: _____	_____
CANANDAIGUA WATER DISTRICT SUPERINTENDENT	_____
DATE: _____	_____
APPROVED BY: _____	_____
TOWN ENGINEER	_____
DATE: _____	_____
PLANNING BOARD CHAIRPERSON	_____
DATE: _____	_____





Drawn By:	MJY
Checked By:	GS
Project Manager:	GS

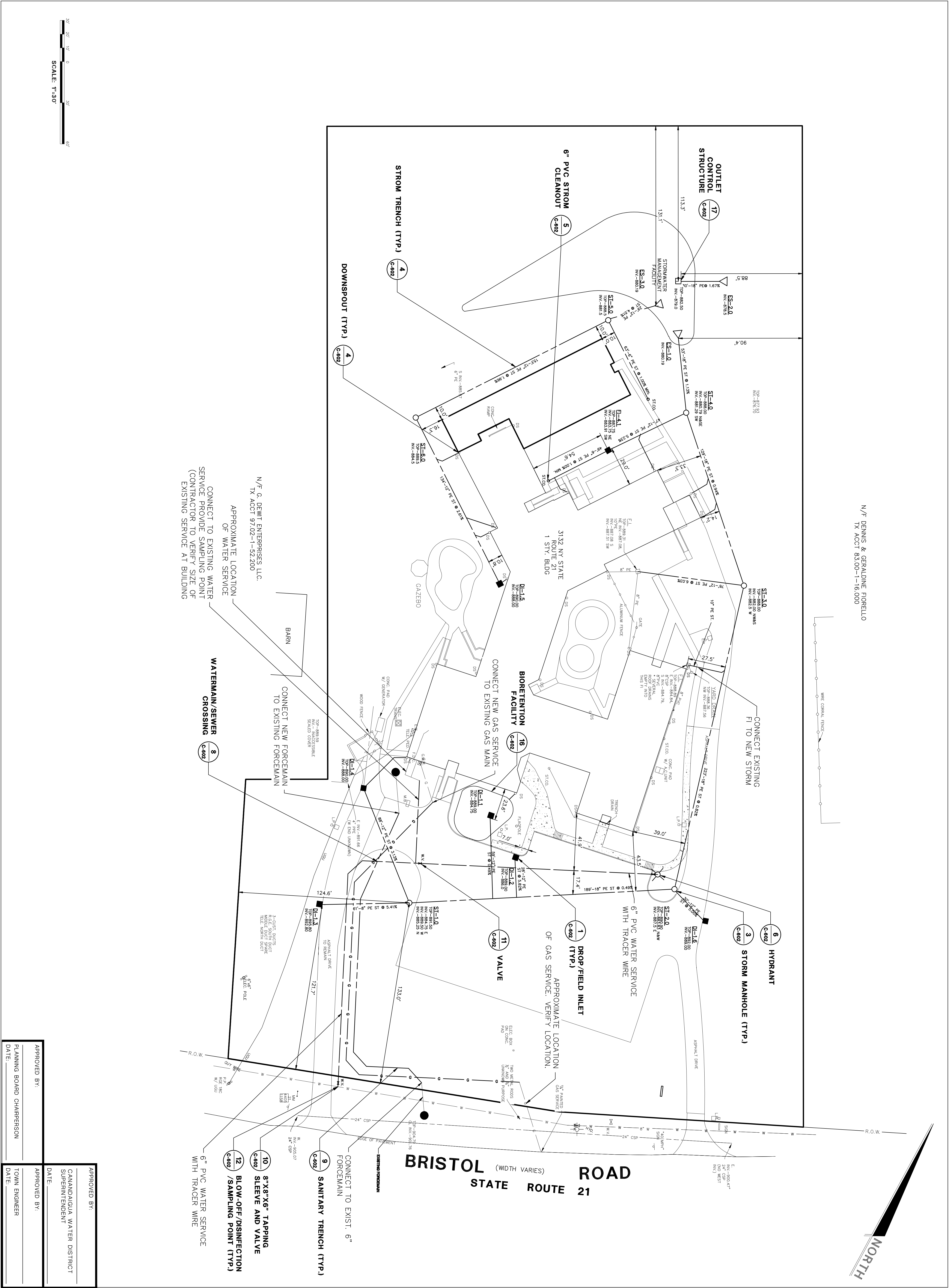
These documents and all their ideas, arrangements, designs and plans indicated thereon or presented thereby are owned by and remain the property of SVBR and no part thereof shall be utilized by any person, firm, or corporation for any purpose whatsoever except with the specific written permission of SVBR.

All rights reserved. ©

with the specific written permission of SWBR.
All rights reserved. ©

DEPAUL
1931 Buffalo RD
Rochester, NY 14624

6/13/18
PRELIMINARY
SET



SWBR

305 WEST 121ST STREET
NEW YORK, NY 10032
Tel: 212.312.1000 | Fax: 212.312.1001
www.swbr.org

PARRONE

engineering

340 WEST COMMERCIAL STREET
EAST ROCKAWAY, NEW YORK 11404
Tel: 768.508.0200 | Fax: 768.508.0782
Copyright © 2017
PARRONE engineering

STATE OF NEW YORK

EDWARD J. PARRONE
Professional Engineer
No. 031931

6/13/18

PRELIMINARY SET

DEPAUL

1931 Buffalo RD
Rochester, NY 14624

DEPAUL HORIZONS

14600 W. 14TH AVE
PARRONE Project Number 7198

C-300

UTILITY PLAN

APPROVED BY:

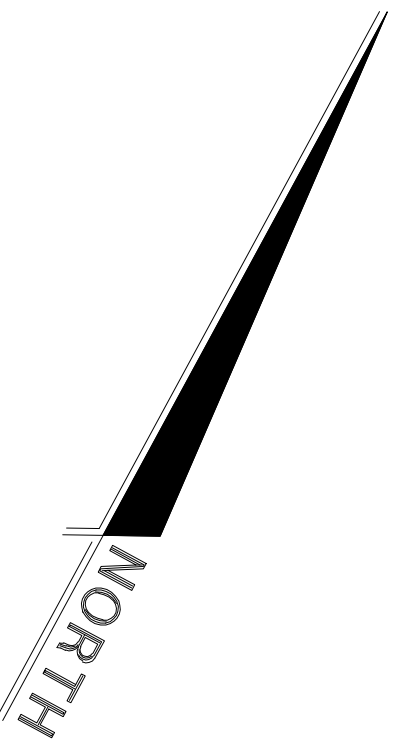
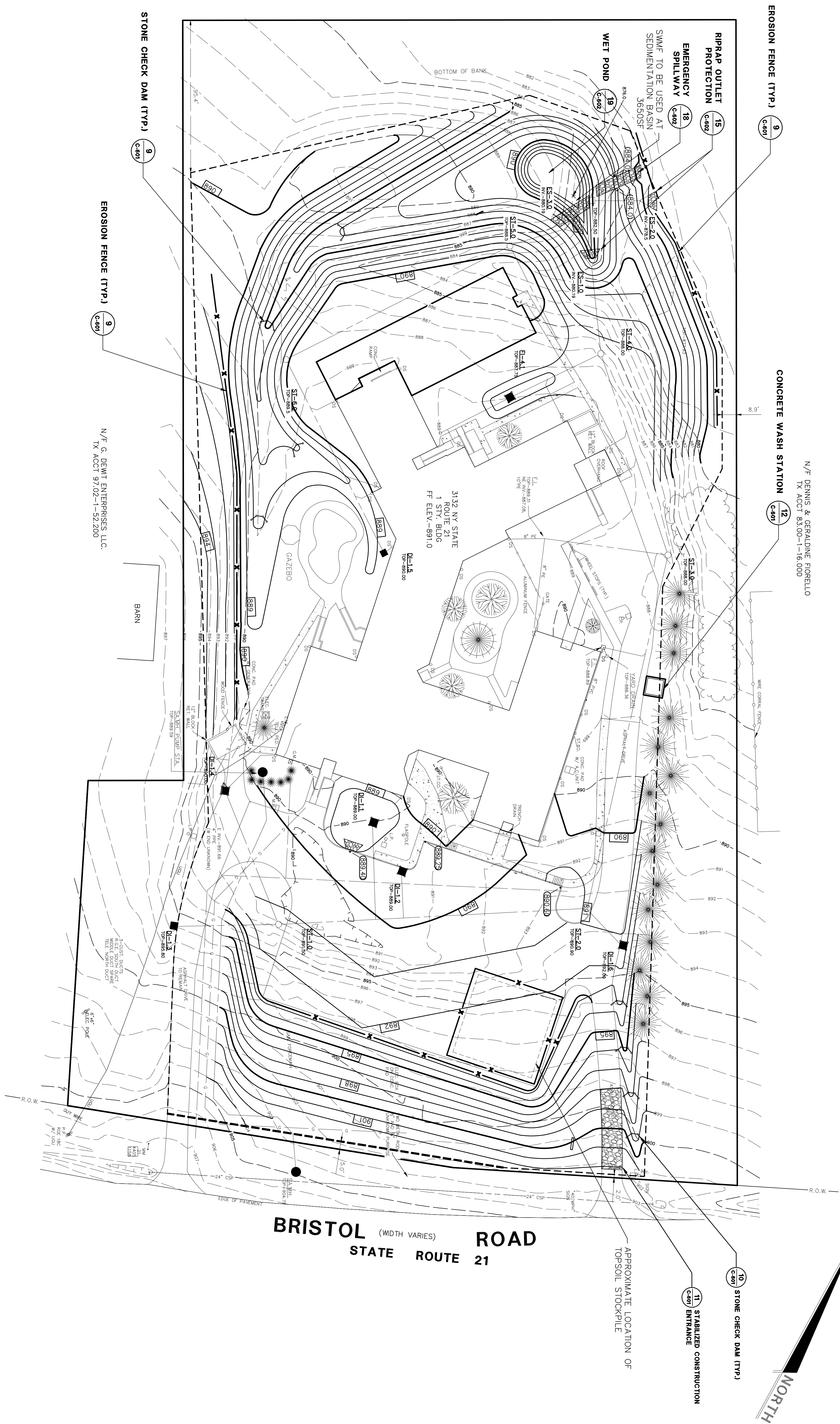
APPROVED BY:

PLANNING BOARD CHAIRPERSON

TOWN ENGINEER

DATE:

DATE:



SWBR

PARONE
engineering

SUITE 3200
EAST ROCHESTER, NEW YORK 14445
T 585.586.0200 F 585.586.6752

Copyright © 2017
PARRONE engineering

SCALE: 1"=30'

Drawn By: _____

Checked By: _____

Project Manager:

These documents and all the arrangements, designs and

These documents and all the ideas, arrangements, designs and plans indicated thereon or presented thereby are owned by and remain the property of SYMBR and no part thereof shall be utilized by any person, firm, or corporation for any purpose whatsoever except with the specific written permission of SYMBR. All rights reserved. ©

Revisions

REVISED POND GRADES
8-3-2018

**DEPAUL HORIZONS
ADDITION**
PARRONE Project Number 7198

DEPAUL
1931 Buffalo Rd
Rochester, NY 14624

C-400

GRADING AND EROSION CONTROL PLAN

6/13/18
PRELIMINARY
SET

LIGHTING SCHEDULE			
TYPE	SYMBOL	DESCRIPTION	MOUNTING HEIGHT - QTY
LP1		5 FOOT CANDLE LIGHTING (7) 60'-30" SW	5"
LP2		2 FOOT CANDLE LIGHTING (7) 60'-30" SW	EXISTING
LP3		1 FOOT CANDLE LIGHTING (2) 60'-30" SW	2"

CONTOUR LEVEL LEGEND

- 5 FOOT CANDLE
- 2 FOOT CANDLE
- 1 FOOT CANDLE
- .5 FOOT CANDLE



N/F DENNIS & GERALDINE FIORELLO
TX ACCT 63,00-1-16,000

LIGHTING FIXTURE TO BE REPLACED
LIGHT POLE AN BASE TO REMAIN

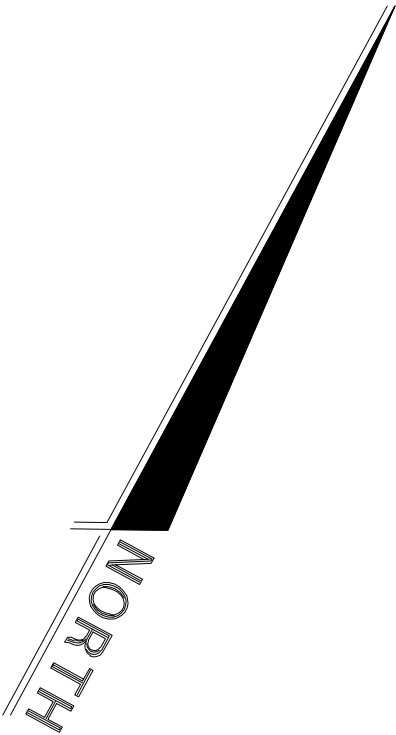
LIGHT POLE TO BE REMOVED

LIGHTING FIXTURE TO BE REPLACED
LIGHT POLE AND BASE TO REMAIN

N/F G. DEWIT ENTERPRISES, LLC.
TX ACCT 97,02-1-52,200

LIGHTING FIXTURE TO BE REPLACED
LIGHT POLE AND BASE TO REMAIN

LIGHT POLE TO BE REMOVED



SWBR

305 EAST 10TH STREET, SUITE 200, NEW YORK, NY 10003
562.532.8000 | info@swbr.com

PARRONE
engineering

340 WEST COMMERCIAL STREET
SUITE 200, YORK, PA 17404
717.863.0600 | info@parrone.com

Copyright © 2017
PARRONE engineering



SCALE: 1"=30'

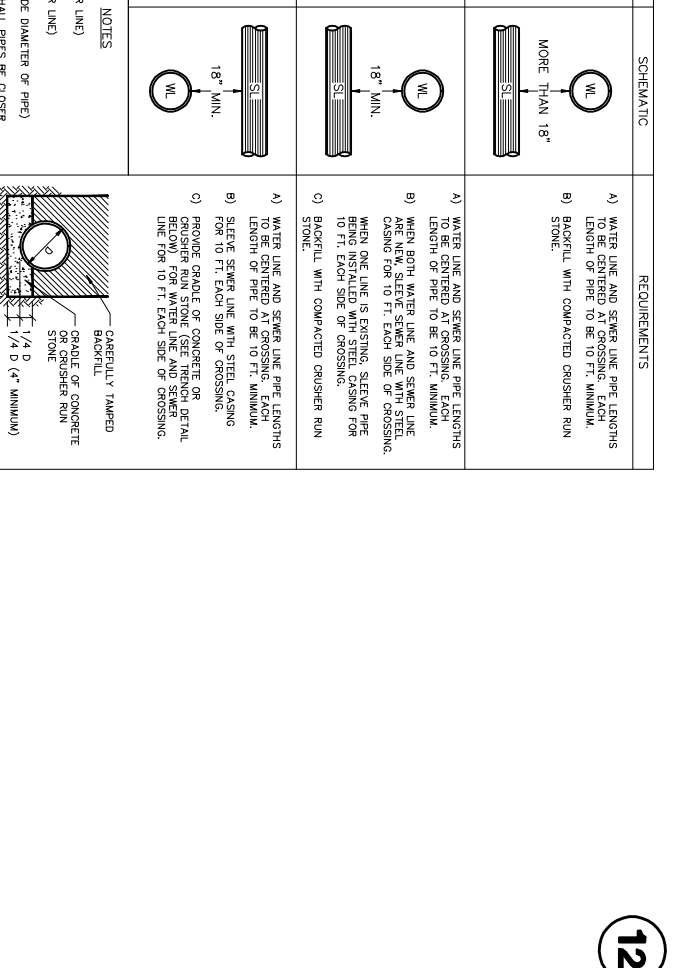
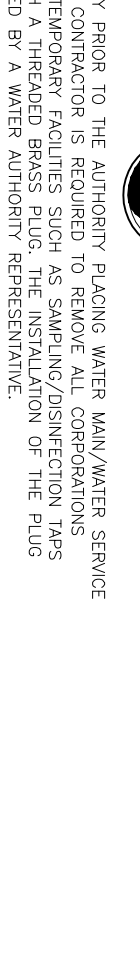
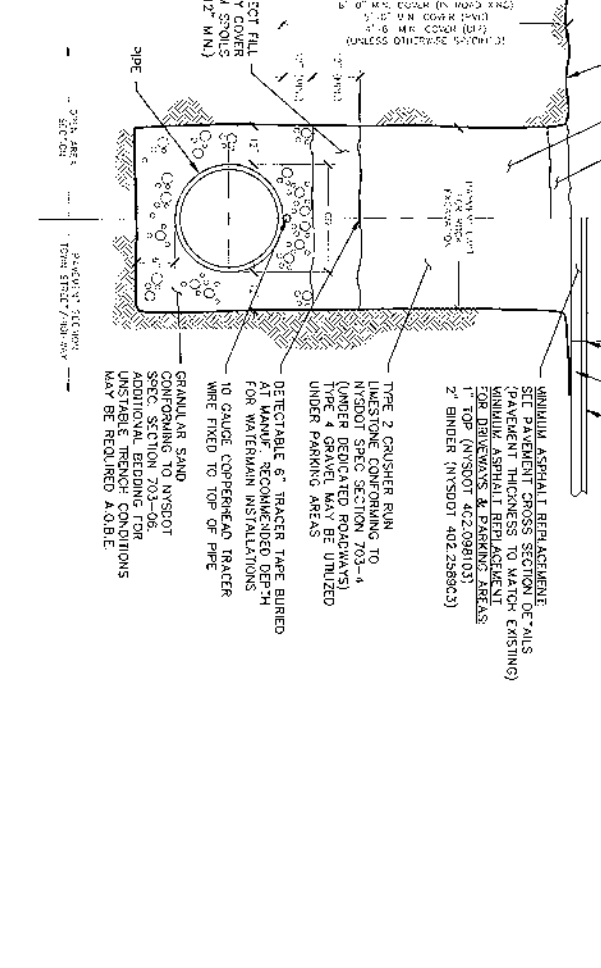
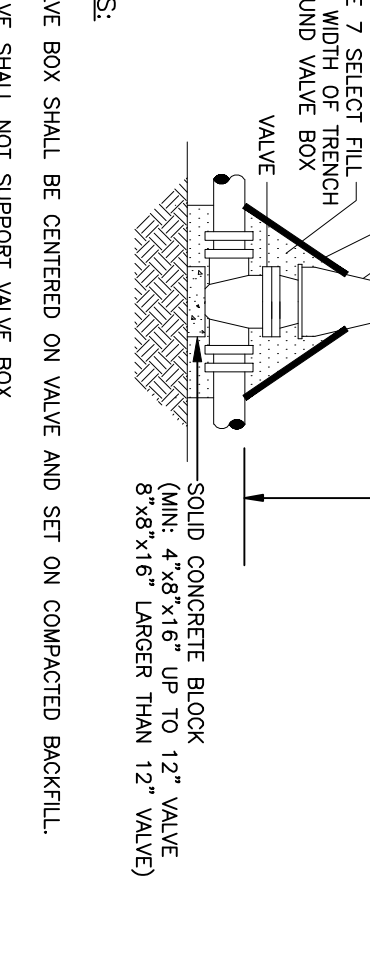
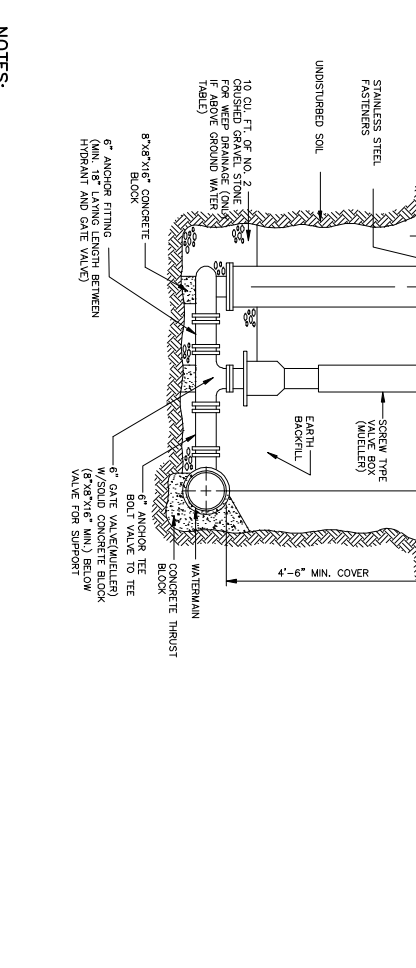
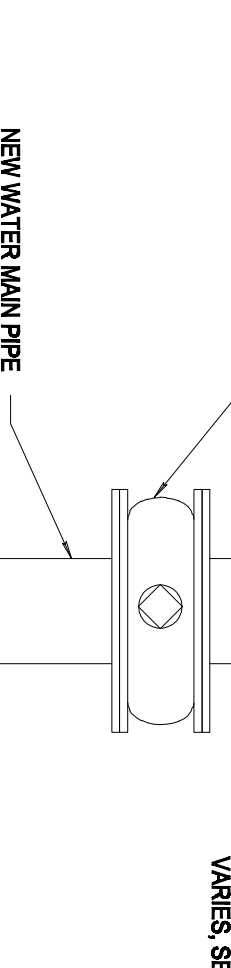
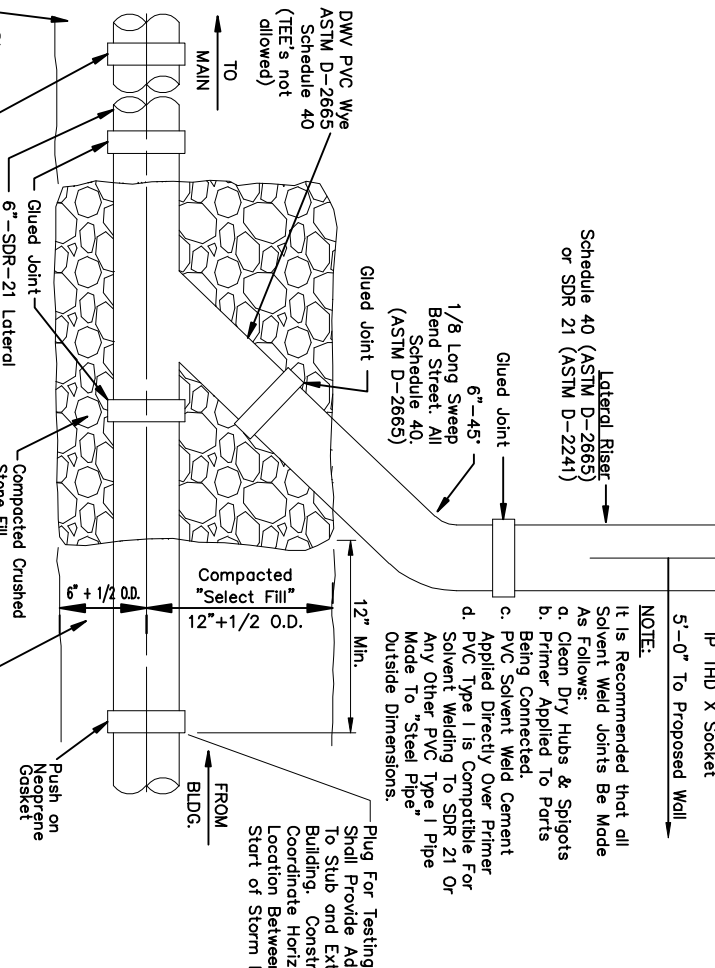
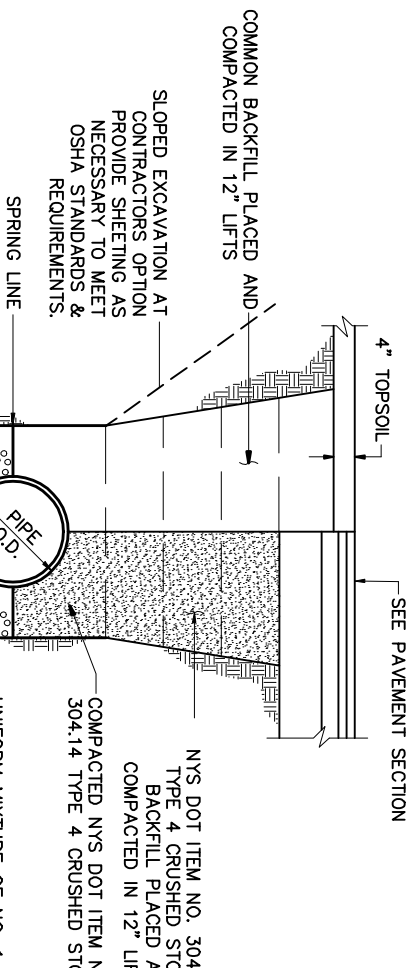
Drawn By: MJY
Checked By: GS
Project Manager: GS
These documents and all the ideas, information, designs and plans indicated herein are the property of SWBR and no part thereof shall be utilized by any person, firm, or corporation without the written permission of SWBR.
All rights reserved. ©

Revisions

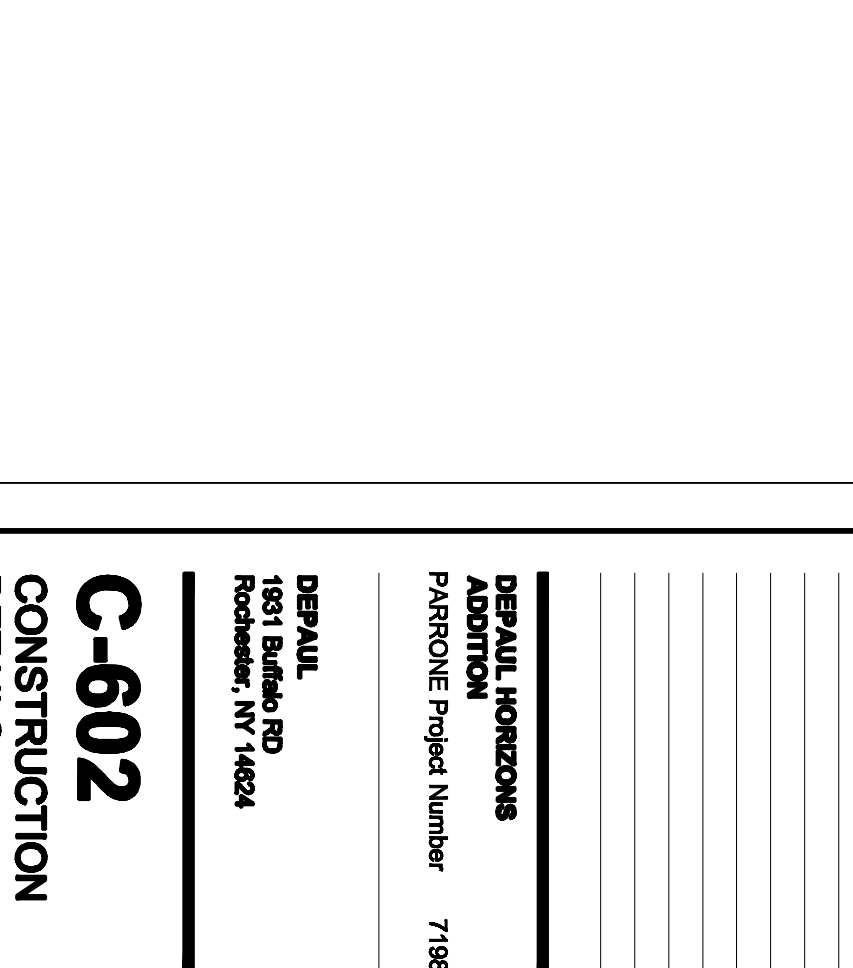
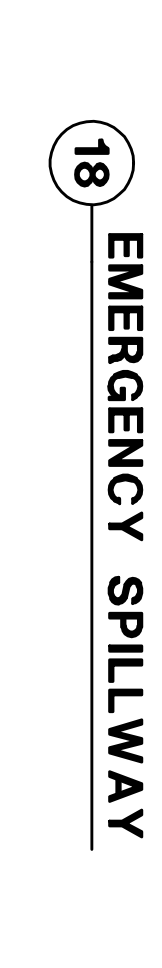
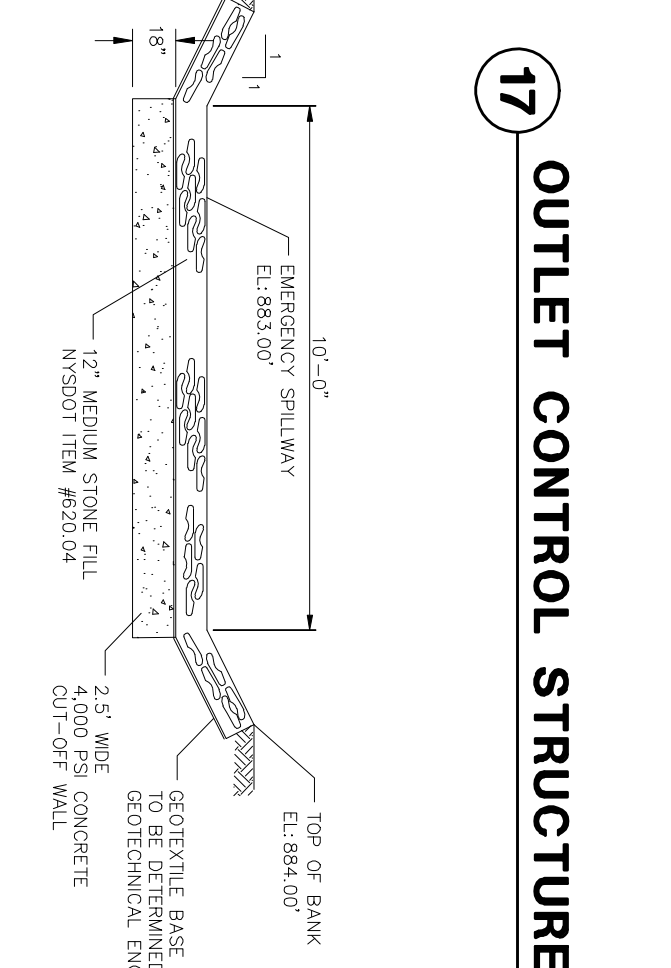
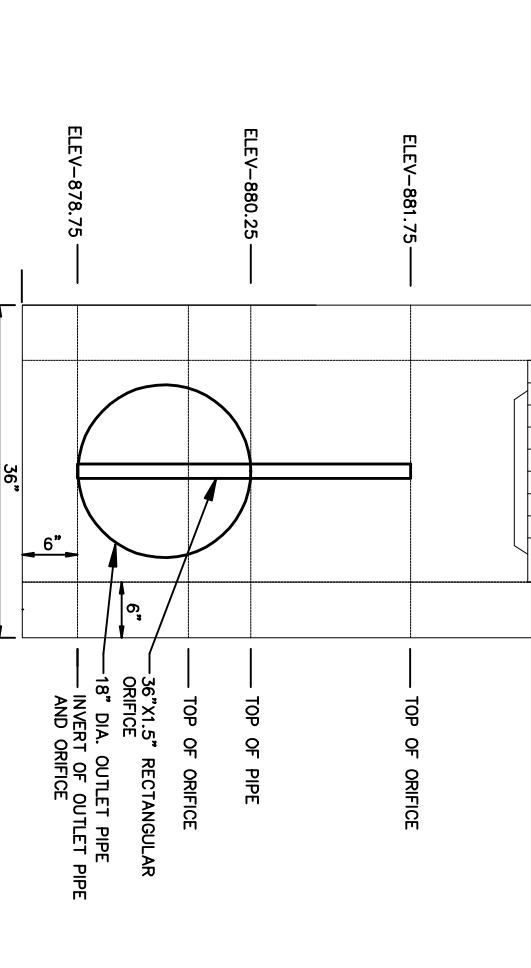
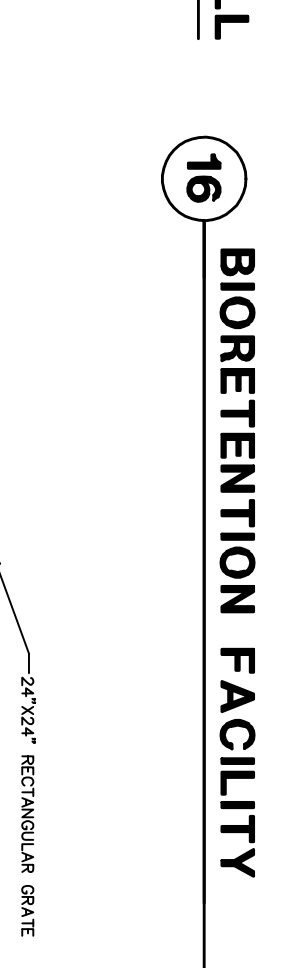
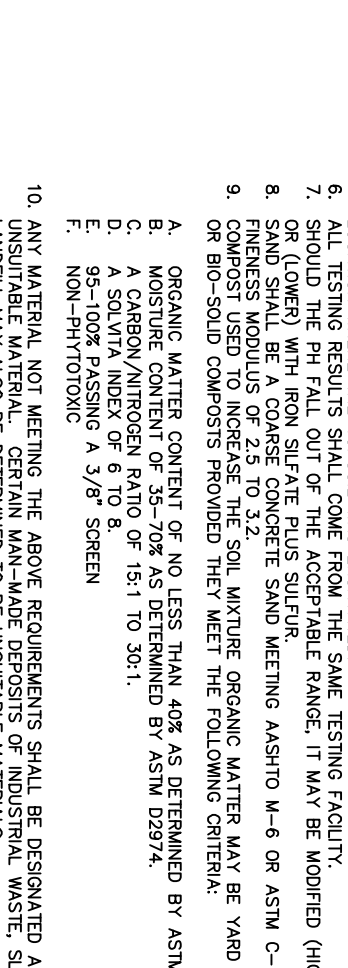
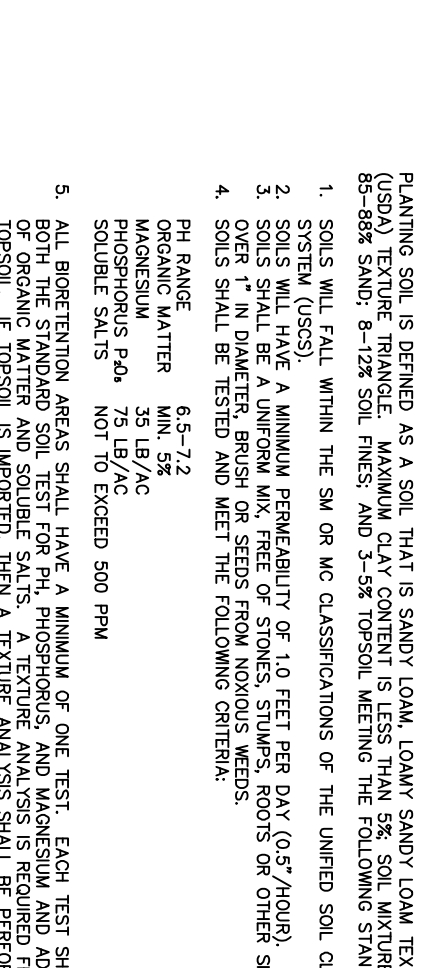
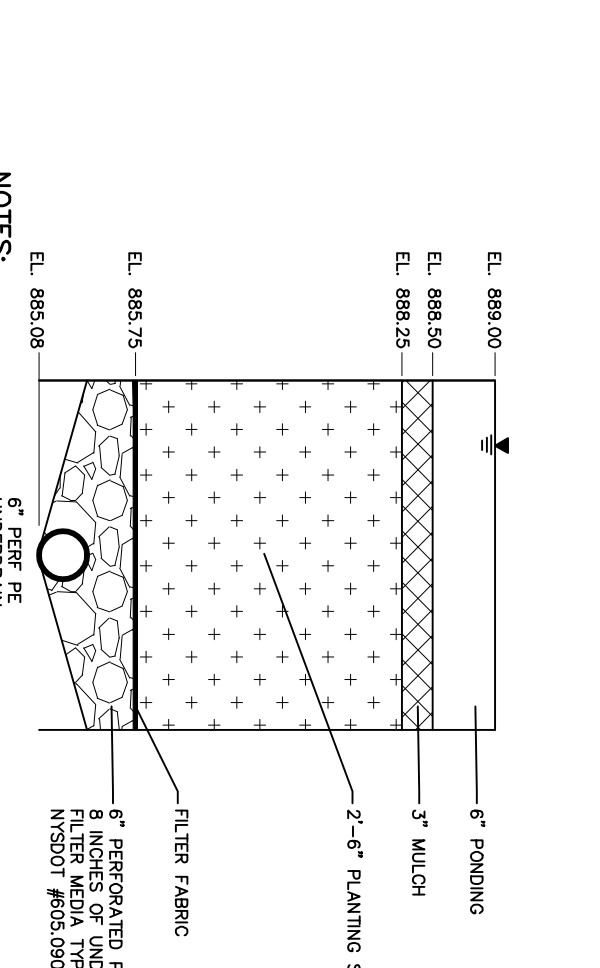
DEPAUL HORIZONS
1801 Buffalo RD
Rochester, NY 14624
PARRONE Project Number 7118

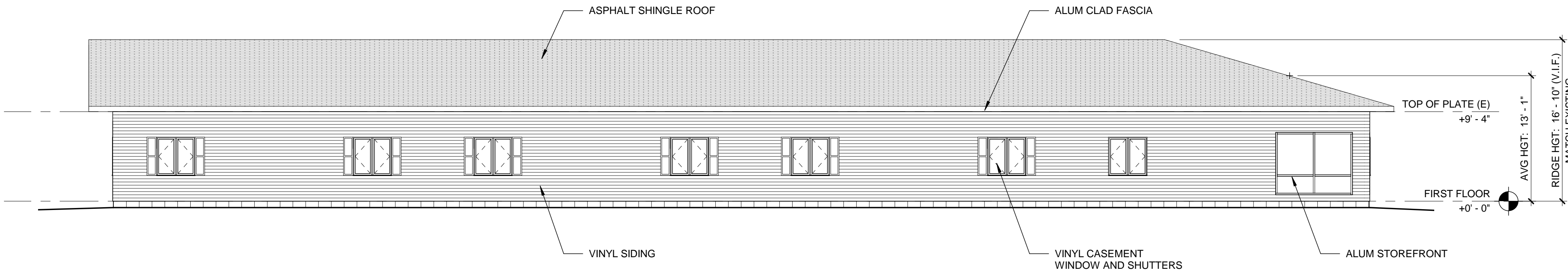
C-500
LIGHTING PLAN

6/13/18
PRELIMINARY
SET



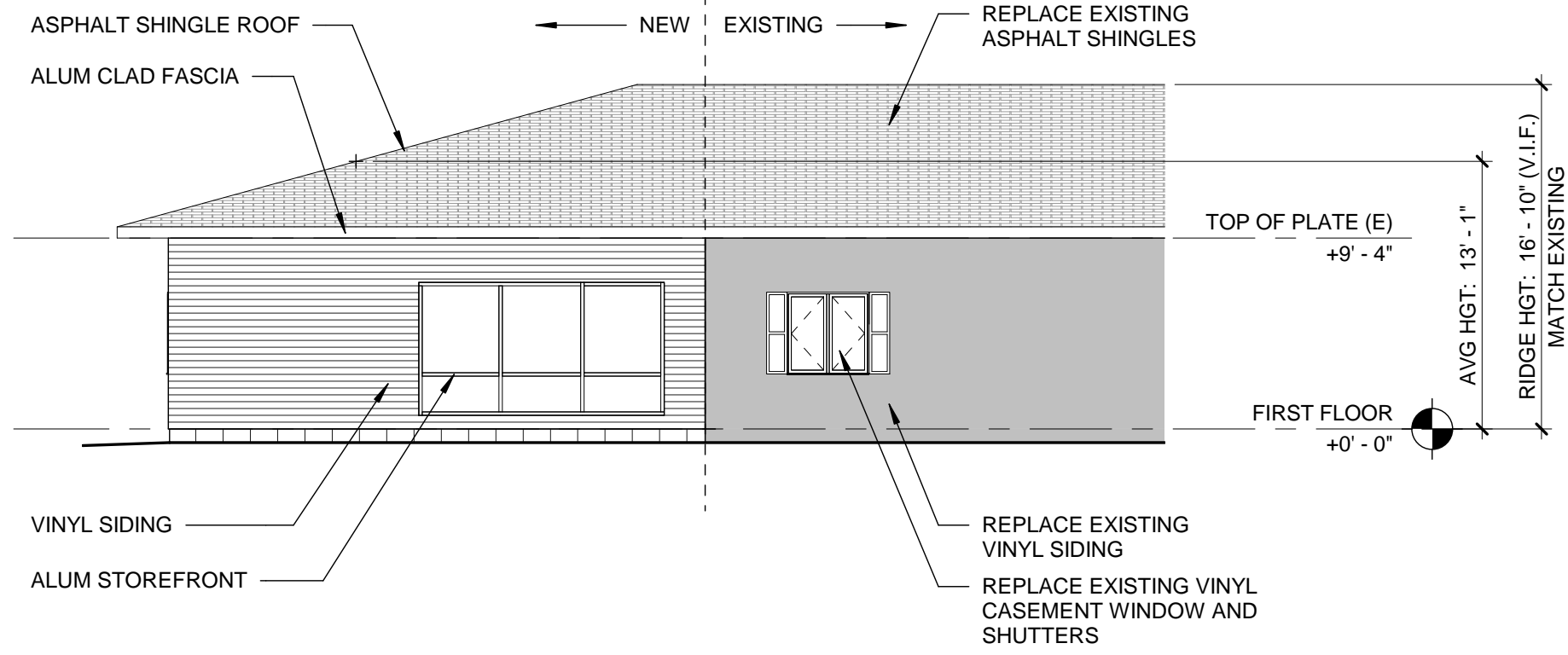
A cross-sectional diagram of a dam. The dam body is shown with a crest, a spillway on the left, and an abutment on the right. Key levels and components are labeled: 'FOREBAY' on the left, 'INFLUN' (inflow) at the spillway, 'OVERFLOW' on the spillway face, 'ABUTMENT' on the right, 'CHAMBER' at the base of the spillway, 'OFFSPILL' (offspill) at the base of the spillway, and 'EXTREME FLOOD' at the top right. The diagram illustrates the flow of water from the inflow through the spillway and over the dam crest into the forebay and chamber.





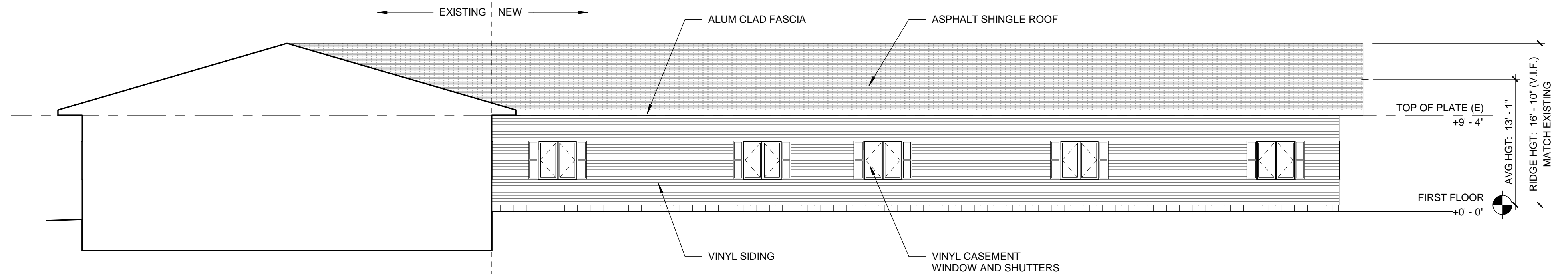
4 EXTERIOR ELEVATION - NORTHWEST @ ADDITION

1/8" = 1'-0"



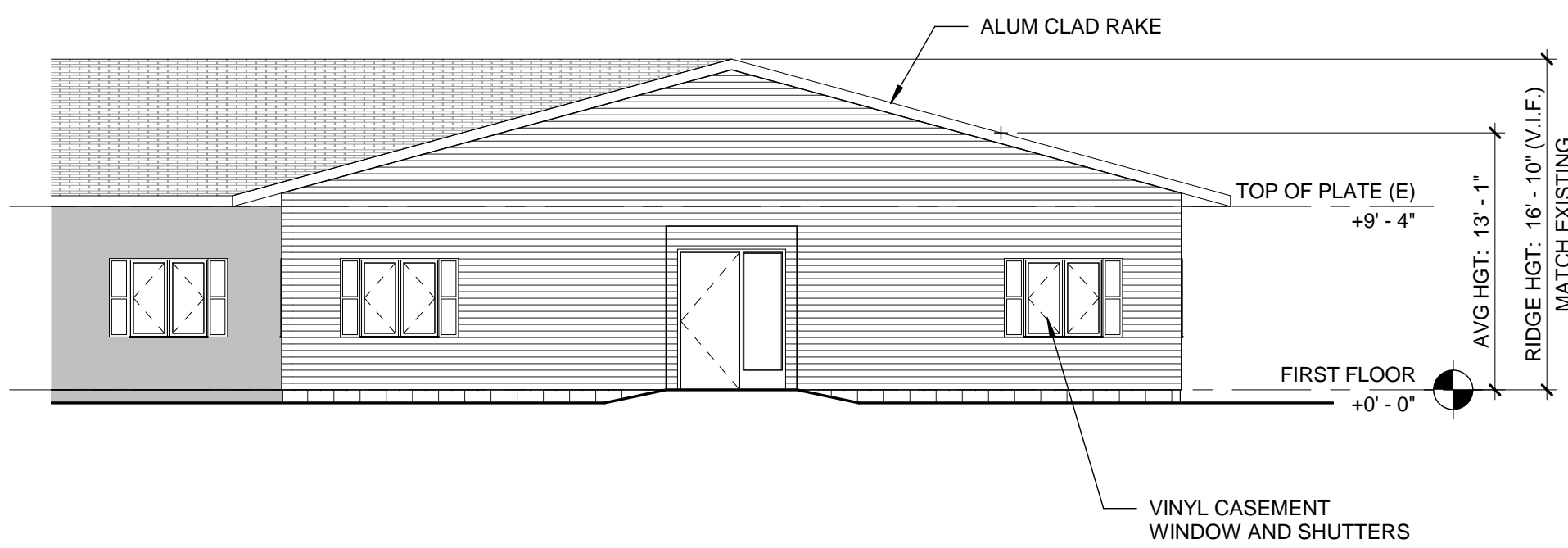
3 EXTERIOR ELEVATION - SOUTHWEST @ ADDITION

1/8" = 1'-0"



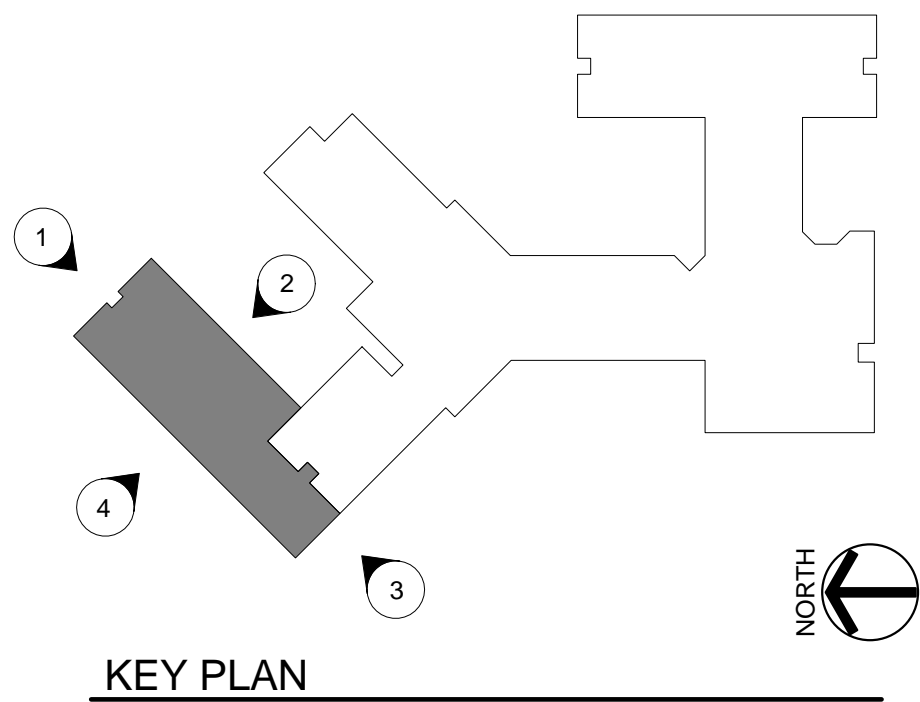
2 EXTERIOR ELEVATION - SOUTHEAST @ ADDITION

1/8" = 1'-0"



1 EXTERIOR ELEVATION - NORTHEAST @ ADDITION

1/8" = 1'-0"



Drawn By: LAK
Checked By: E.JG
Project Manager: E.JG

These documents and all the ideas, arrangements, designs and plans indicated thereon or presented thereby are owned by and remain the property of SWBR Architecture, Engineering & Landscape Architecture, D.P.C., and no part thereof shall be utilized by any person, firm, or corporation for any purpose whatsoever except with the specific written permission of SWBR Architecture, Engineering & Landscape Architecture, D.P.C. All rights reserved. ©

Revisions

DePaul Horizons Addition and Revonations
SWBR Proposal Number 18290.00

DePaul
1931 Buffalo Road
Rochester, NY 14624

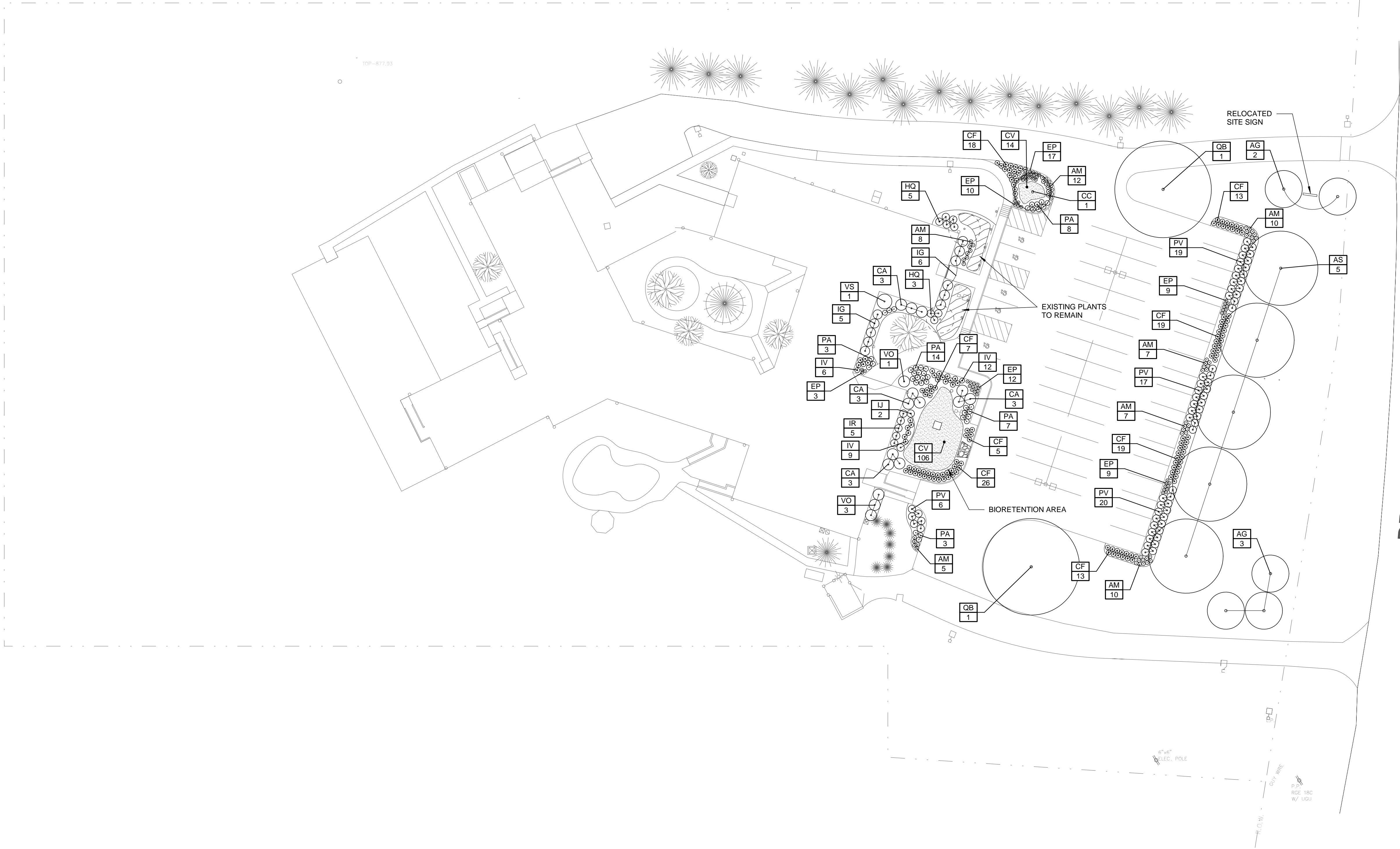
A-201

Addition - Exterior Elevations

Preliminary Set
October 1, 2018

TREES						
KEY	QTY	SCIENTIFIC NAME	COMMON NAME	ROOT	SIZE	NOTES
AG	5	Amelanchier x grandiflora 'Robin Hill'	Robin Hill Serviceberry	B&B	2"	
AS	5	Acer saccharum	Sugar Maple	B&B	3"	
CC	1	Cercis canadensis 'Forest Pansy'	Forest Pansy Redbud	B&B	2.5"	
QB	2	Quercus bicolor	Swamp White Oak	B&B	3"	

SHRUBS, PERENNIALS, GROUNDCOVER						
KEY	QTY	SCIENTIFIC NAME	COMMON NAME	ROOT	SIZE	NOTES
AM	59	Achillea millefolium 'Pomegranate'	Pomegranate Yarrow	Cont.	No. 1	
CA	12	Clethra alnifolia	Sweet Pepper Bush	Cont.	No. 5	
CF	120	Calamagrostis x acutiflora 'Karl Foerster'	Karl Foerster Feather Reed Grass	Cont.	No. 2	
CV	120	Carex vulpinoidea	Fox Sedge	Cont.	No. 1	
EP	56	Echinacea purpurea 'Bright Star'	Purple Coneflower	Cont.	No. 1	
HQ	8	Hydrangea quercifolia 'Sike's Dwarf'	Oakleaf Hydrangea	Cont.	No. 5	
IG	11	Ilex glabra 'Shamrock'	Inkberry	Cont.	No. 5	
IJ	2	Ilex verticillata 'Jim Dandy'	Jim Dandy Winterberry	Cont.	No. 5	
IR	5	Ilex verticillata 'Red Sprite'	Red Sprite Winterberry	Cont.	No. 5	
IV	24	Itea virginica 'Sprich'	Little Henry Virginia Sweetspire	Cont.	No. 3	
PA	38	Pennisetum alopecuroides 'Hameln'	Dwarf Fountain Grass	Cont.	No. 2	
PV	61	Panicum virgatum 'Shenandoah'	Shenandoah Switch Grass	Cont.	No. 3	
VO	4	Viburnum opulus 'Compactum'	European cranberrybush	Cont.	No. 5	
VS	1	Viburnum sargentii 'Onondaga'	Onondaga Viburnum	Cont.	No. 5	



1 OVERALL LANDSCAPE PLAN
1" = 30'-0"