

LANDSCAPING NOTES

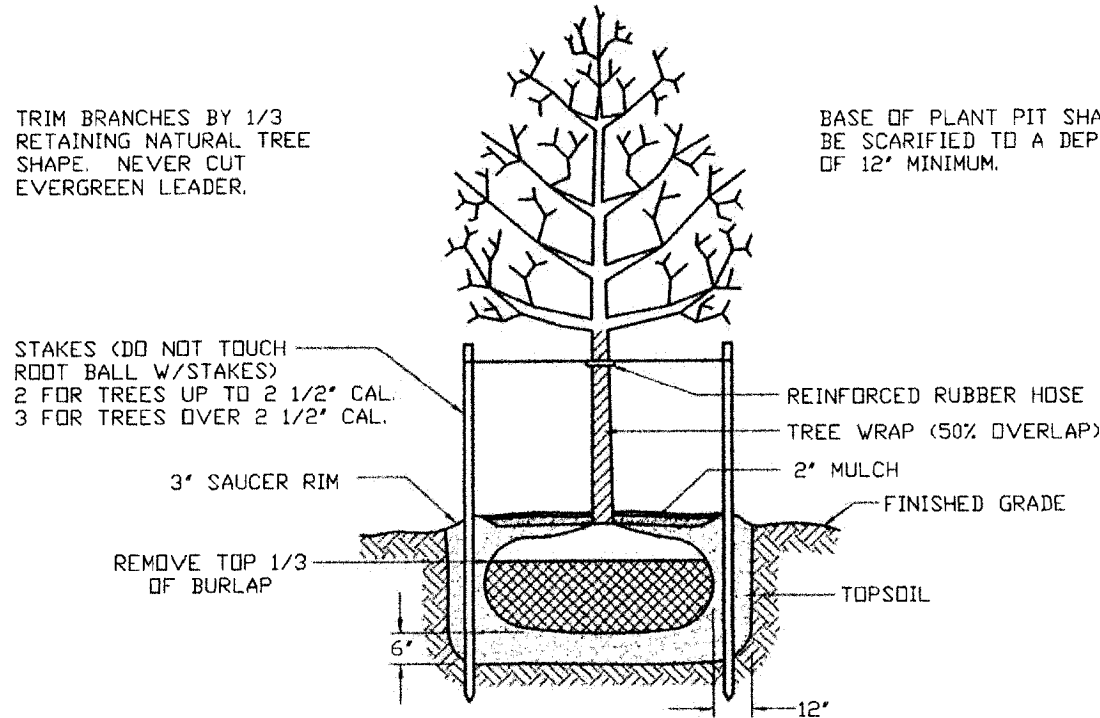
- All plants shall meet or exceed the requirements set forth in the latest edition of the American Standard for Nursery Stock by the American Association of Nurserymen, ANSI Z60.1.
- Upon completion and acceptance of the landscaping by the Town of Canandaigua, a two (2) year maintenance guarantee is required.
- All planting beds to receive 3" of shredded hardwood bark mulch and weed barrier.
- No trees are to be planted within 20' of overhead wires or within 5' of underground utilities.
- Stake and wrap tree trunks upon planting.
- Planting backfill mixture to consist of 4 parts of topsoil and 1 part peat moss. Provide 10 lbs. of 5-10-5 fertilizer per 1 cubic yard of planting backfill.
- Apply lawn seed mix at a rate of 5 lbs. per 1,000 s.f. of lawn area using the following proportions by weight:

Lawn Areas

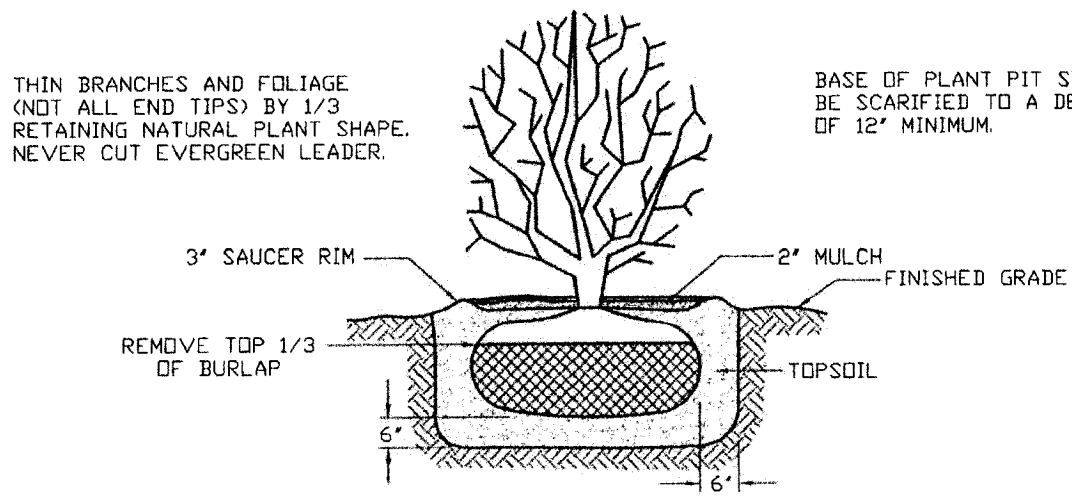
% by Weight	Species or Variety
45	Kentucky Bluegrass
40	Red Fescue (Commercial)
15	Common Ryegrass

Rate of lawn fertilizer to be 25 lbs. per 1,000 s.f.
- All seeded areas are to receive 4" of topsoil, seed, straw mulch cover, fertilizer, and water until a thick turf cover is obtained.
- All planting bed areas shall be constructed with 12" of planting backfill mixture.
- Topsoil must be stripped and stockpiled before construction and replaced on all landscaped and lawn areas to a minimum depth of 4" before resale or removal from site.
- No Phosphorous shall be used at planting time unless soil testing has been completed and tested by a Horticultural Testing Lab and the soil tests specifically indicate a phosphorous deficiency that is harmful, or will prevent new lawns and plantings from establishing properly.
- If soil tests indicate a phosphorous deficiency that will impact plant and lawn establishment, phosphorous shall be applied at the minimum recommended level prescribed in the soil test following all NYS DEC regulations.

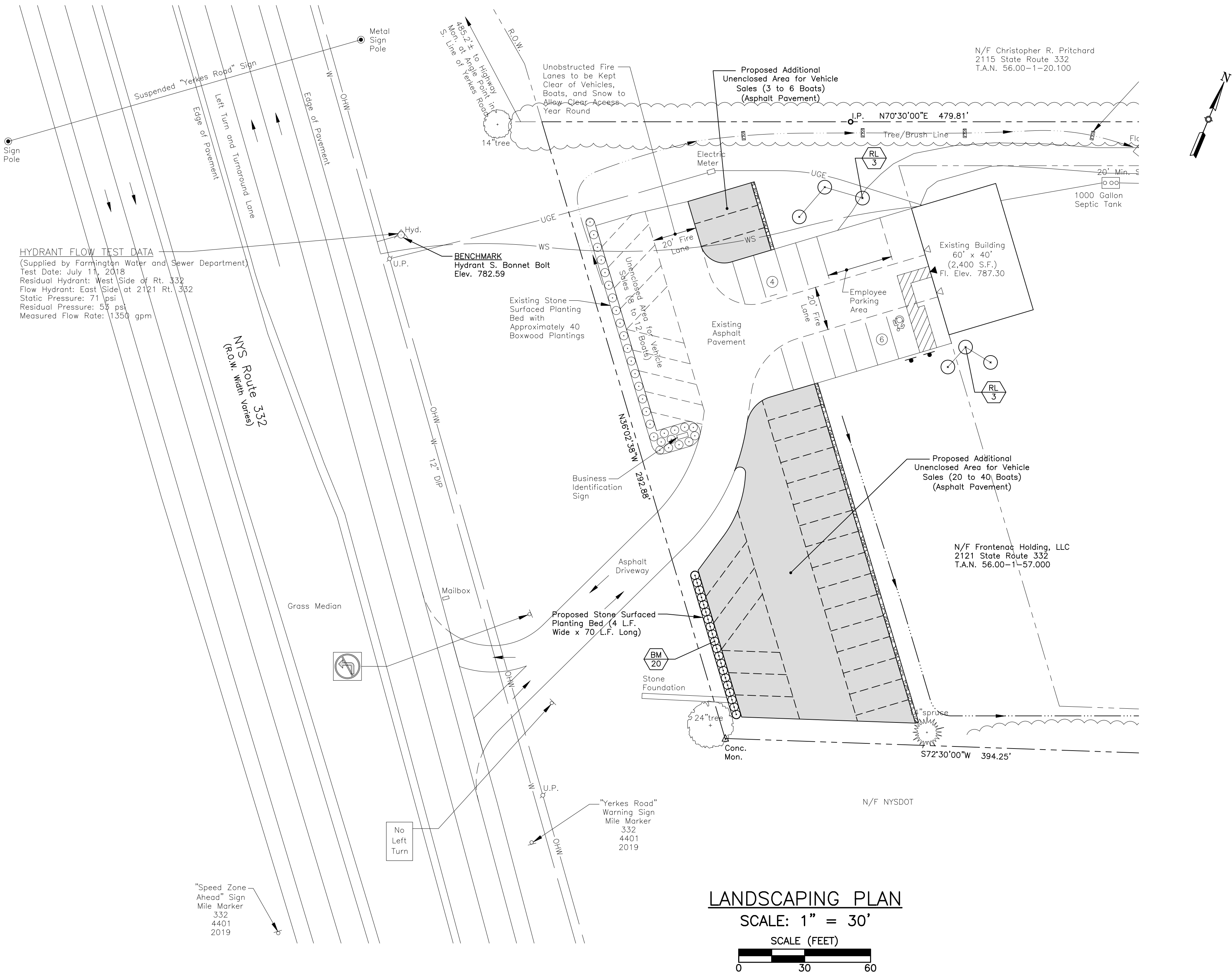
PLANTING SCHEDULE						
QUANTITY	KEY	BOTANICAL NAME	COMMON NAME	SIZE	ROOT	NOTES
20	BM	Buxus microphylla	Littleleaf Boxwood	24" Height	Container	6' O.C.
6	RL	Syringa x "Royalty"	Royalty Lilac	24" Height	Container	



TYPICAL TREE PLANTING
NOT TO SCALE



TYPICAL SHRUB PLANTING
NOT TO SCALE



LANDSCAPING PLAN

SCALE: 1" = 30'

SCALE (FEET)



APPROVALS

Planning Board Chairperson	Date
Town Engineer	Date
Canandaigua-Farmington Water Superintendent	Date

REVISIONS

NO.	DESCRIPTION	DATE	BY
1	PRC COMMENTS	09/15/21	GFT
2	TOWN ENGINEER COMMENTS	10/19/21	GFT

NOT APPROVED FOR CONSTRUCTION

It is a violation of New York State Education Law Article 145 Section 7209 for any person, unless he or she is acting under the direction of a licensed professional engineer or land surveyor, to alter an item in any way. If an item bearing the seal of an engineer or land surveyor is altered, the altering engineer or land surveyor shall affix to the item his or her seal and the notation "altered by" followed by his or her signature and the date of such alteration, and a specific description of the alteration.

THORNTON ENGINEERING LLP

30 Assembly Drive, Suite 106
Mendon, New York 14506
Tel. 585-624-4810
Consultant Engineers



ALL RIGHTS RESERVED: No part of this document may be reproduced, stored in a retrieval system, or transmitted, in any form or by any means electronic, mechanical, photocopying, recording, or otherwise without the prior written authorization of Thornton Engineering LLP. COPYRIGHT © Thornton Engineering LLP, 2021



PROJECT NAME:

Boat Display Expansion

FLX Marine
2121 State Route 332
Town of Canandaigua
Ontario County, NY

DRAWING TITLE:


Landscaping Plan

FILE NAME: LANDSCAPEPLAN.DWG	DESIGNED BY: GFT
DRAWN BY: HKT	CHECKED BY: GFT
APPROVED BY: GFT	DATE: SEPTEMBER 2021
SCALE: AS NOTED	PROJECT NO.: 21-850
SHEET NO.: 2 OF 3	DRAWING NO.: S-2

It is a violation of New York State Education Law Article 145 Section 7209 for any person, unless he or she is acting under the direction of a licensed professional engineer or land surveyor, to alter an item in any way, if on item bearing the seal of an engineer or land surveyor is altered, the altering engineer or land surveyor shall affix to the item his or her seal and the notation "altered by" followed by his or her signature and the date of such alteration, and a specific description of the alteration.

THORNTON

E N G I N E E R I N G L L P



30 Assembly Drive, Suite 106
Mendon, New York 14506
Tel. 585-624-4810
Consultant Engineers

ALL RIGHTS RESERVED: No part of this document may be reproduced, stored in a retrieval system, or transmitted, in any form or by any means electronic, mechanical, photocopying, recording, or otherwise without the prior written authorization of Thornton Engineering LLP.

COPYRIGHT
© Thornton Engineering LLP, 2021



FILE NAME: DETAILS.DWG	DESIGNED BY: GFT
DRAWN BY: HKT	CHECKED BY: GFT
APPROVED BY: GFT	DATE: SEPTEMBER 2021
SCALE: NOT TO SCALE	PROJECT NO.: 21-850
SHEET NO.: <u>3</u> OF <u>3</u>	DRAWING NO.: D-1

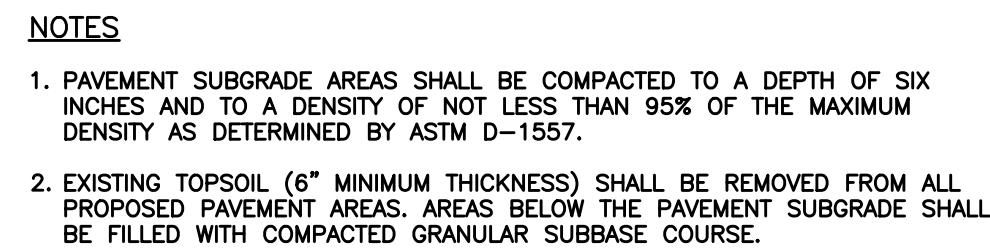


Diagram illustrating the cross-section of a pavement structure, showing the following layers and components:

- INITIAL FULL DEPTH ASPHALT PAVEMENT SAWCUT** (Top layer)
- 12" WIDE PAVEMENT MILLING AREA (1" DEPTH) NYSDOT ITEM #90.30** (Milling area)
- SAWCUT PAVEMENT (1" DEPTH) PRIOR TO MILLING. SEAL JOINT FOLLOWING PAVING WITH BITUMINOUS SEALER.** (Sawcut pavement layer)
- 2 1/2" HOT MIX ASPHALT TYPE 3 BINDER COURSE, NYSDOT ITEM 403.138902** (Binder course)
- 1 1/2" HOT MIX ASPHALT TYPE 7 TOP COURSE, NYSDOT ITEM 403.198902** (Top course)
- EXISTING ASPHALT PAVEMENT TO REMAIN** (Existing pavement layer)
- EXISTING SUBBASE TO REMAIN** (Existing subbase layer)
- 12" GRANULAR SUBBASE COURSE, COMPACTED IN TWO EQUAL LIFTS NYSDOT TYPE 2, ITEM 304.12** (Granular subbase course)
- GEOTEXTILE SUBGRADE FABRIC (MIRAFI 600X)** (Geotextile layer)
- APPLY TACK COAT, NYSDOT ITEM 407.01 TO MILLED SURFACE AND VERTICAL EDGES OF ASPHALT** (Tack coat application)
- SLOPE AS INDICATED ON GRADING PLAN** (Slope indicator)

Diagram illustrating the vertical clearance and mounting height for various signs:

- RESERVED PARKING SIGN:** N.Y. M.U.T.C.D. SIGN NO. P4-6. The sign is mounted on a steel sign post. The bottom of the sign panel is 7'-0" above the finished grade.
- VAN ACCESSIBLE SIGN:** N.Y. M.U.T.C.D. SIGN NO. P4-7. This sign is mounted below the RESERVED PARKING sign.
- NO PARKING ANY TIME SIGN:** N.Y. M.U.T.C.D. SIGN NO. P1-. This sign is typical for access aisles.
- Vertical Clearance:** The bottom of the sign panel is 7'-0" above the finished grade. The minimum clearance from the finished grade to the bottom of the sign panel is 4'-0" MIN.

1. WOVEN WIRE FENCE TO BE FASTENED SECURELY TO FENCE POSTS WITH WIRE TIES OR STAPLES. POSTS SHALL BE STEEL EITHER "T" OR "U" TYPE OR HARDWOOD.
2. FILTER CLOTH TO BE TO BE FASTENED SECURELY TO WOVEN WIRE FENCE WITH TIES SPACED EVERY 24" AT TOP AND MID SECTION. FILTER SHALL BE WOVEN WIRE, 1/2" GAUGE, 6" MAXIMUM MESH OPENING.
3. WHEN TWO SECTIONS OF FILTER CLOTH ADJOIN, EACH OTHER THEY SHALL BE OVERLAPED AND FOLDED. FILTER CLOTH SHALL BE EITHER FILTER X, MIRAFI 100X, STABILUNA T140N, OR APPROVED EQUIVALENT.
4. PREFABRICATED UNITS SHALL BE GEOFAB, ENVIROFENCE, OR APPROVED EQUIVALENT.
5. MAINTENANCE SHALL BE PERFORMED AS NEEDED AND MATERIAL REMOVED WHEN "BULGES" DEVELOP IN THE SILT FENCE.

The technical drawings illustrate the construction of a curb and gutter. The **PROFILE** view shows a cross-section with a 50' MIN. length, a 6" MIN. gutter depth, a 3' MOUNTABLE BERM (OPTIONAL), and a FILTER CLOTH. The **PLAN VIEW** shows a top-down perspective with a 50' MIN. length, a 12' MIN. gutter width, and a 10' MIN. curb height. Both views show the relationship between the EXISTING GROUND and EXISTING PAVEMENT.

PAVEMENT

1' MIN.

PEA GRAVEL

GEOTEXTILE FILTER FABRIC (MIRAFI 180N)

1' MIN.

LAWN SLOPED TO DRAINAGE SWALE LEADING TO RAIN GARDEN

NOTES

1. SOIL MEDIA SHALL CONSIST OF BLENDED 50% TO 70% SAND AND 50% TO 30% TOPSOIL.
2. LANDSCAPE STONES, AND PLANTS THAT ARE TOLERANT TO BOTH WET AND DRY CONDITIONS, SHOULD BE PROVIDED. SUGGESTED PLANTS INCLUDE RED OSIER DOGWOOD, ARROWWOOD, WINTERBERRY, WITCH HAZEL, BROOK-SIDE ADER, SWEET PEPPERBUSH, SWITCH GRASS, NEW ENGLAND ASTER, WOOLGRASS, CUTLEAF CONEFLOWER, AND FOX SEDGE. PLANTS MUST BE IN ACCORDANCE WITH THE NYSDEC RECOMMENDED SPECIES LIST.