
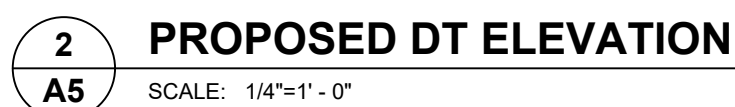


1	PRE-FINISHED METAL CAP FLASHING C/W DRIP.
2	G.C TO PROVIDE AND INSTALL DOUBLE LAYER OF REINFORCING MESH TO MIN. 2" ABOVE GRADE AT ALL EIFS LOCATIONS (TYP.) IN ORDER TO ATTAIN ABUSE RESISTANCE STUCCO SYSTEM.
3	NICHHA VINTAGEBRICK, COLOR: ALEXANDRIA BUFF. REFER TO POPEYES MASTER SCHEDULE.
4	NICHHA VINTAGEBRICK, COLOR: WHITE WASH. REFER TO POPEYES MASTER SCHEDULE.
5	EIFS. REFER TO POPEYES MASTER SCHEDULE.
6	PRE-FINISHED "BLACK ANODIZED" ALUMINUM STOREFRONT SYSTEM WITH INSULATED GLAZING.
7	EXPOSED FOUNDATION TO BE PARGED AND FREE OF IMPERFECTIONS.
8	GAS UTILITY METER.
9	REFER TO STRUCTURAL DRAWINGS FOR FOUNDATION WALL AND FOOTING DETAILS.
10	INTERNALLY ILLUMINATED BUILDING SIGNAGE PROVIDED AND INSTALLED BY SIGN COMPANY. G.C TO PROVIDE AND INSTALL 1" EXTERIOR GRADE PRESSURE TREATED PLYWOOD BACKING AND ALL FINAL ELECTRICAL CONNECTION. SIGN MANUFACTURER SHALL OBTAIN STRUCTURALLY SEALED DRAWINGS AND SIGNAGE PERMITS FROM THE CITY BASED ON LOCAL REQUIREMENTS. G.C SHALL VERIFY ACTUAL LOCATION & SIZE OF SIGNS WITH SIGN MANUFACTURER'S APPROVED DRAWINGS AND COORDINATE LOCATIONS OF BLOCKING AND UTILITIES. G.C TO COORDINATE WITH SIGN INSTALLER TO USE VHM DRILL BIT WHILE DRILLING FOR ELECTRICAL FEED LINES AND SIGNAGE FASTENERS. ALL ELEMENTS PROVIDED BY SIGNAGE FABRICATOR TO BE REVIEWED AND APPROVED BY POPEYES PRIOR TO PRODUCTION
11	NON-ILLUMINATED BUILDING SIGNAGE PROVIDED AND INSTALLED BY SIGN COMPANY. G.C TO PROVIDE AND INSTALL 1" EXTERIOR GRADE PRESSURE TREATED PLYWOOD BACKING. SIGN MANUFACTURER SHALL OBTAIN STRUCTURALLY SEALED DRAWINGS AND SIGNAGE PERMITS FROM THE CITY BASED ON LOCAL REQUIREMENTS. G.C SHALL VERIFY ACTUAL LOCATION & SIZE OF SIGNS WITH SIGN MANUFACTURER'S APPROVED DRAWINGS AND COORDINATE LOCATIONS OF BLOCKING AND UTILITIES. G.C TO COORDINATE WITH SIGN INSTALLER TO USE VHM DRILL BIT WHILE DRILLING FOR ELECTRICAL FEED LINES AND SIGNAGE FASTENERS. ALL ELEMENTS PROVIDED BY SIGNAGE FABRICATOR TO BE REVIEWED AND APPROVED BY POPEYES PRIOR TO PRODUCTION
12	NICHHA VINTAGE WOOD, COLOR: CEDAR. REFER TO POPEYES MASTER SCHEDULE.
13	PROVIDE & INSTALL 6" DIAMETER STEEL PIPE BOLLARD TOP AT 4'-6" A.F.F. G.C. TO PAINT "SAFETY YELLOW". REFER TO POPEYES MASTER SCHEDULE.
14	DRIVE-THRU WINDOW. REFER TO DRIVE-THRU WINDOW SCHEDULE ON SHEET A11.
15	N/A.
16	PRE-FINISHED GALVANIZED STEEL DOWNSPOUT & COLLECTOR BOX. G.C. TO COORDINATE WITH CIVIL ENGINEERS TO CONFIRM IF DOWNSPOUTS ARE SPLASHING ON CONCRETE PAD OR TIED TO THE STORM SEWER LINE. REFER TO MECHANICAL DRAWINGS.
17	N/A.
18	DASHED LINE INDICATES T/O OF ROOF BEHIND PARAPET.
19	C/T CABINET AND METER.
20	LINE OF PARAPET WALLS BEYOND.
21	GENERAL PURPOSE EXTERIOR LIGHTING FIXTURES.
22	WALK-IN COOLER/FREEZER FINISH TO BE COMPLETED BY MANUFACTURER.
23	N/A.
24	PRE-FINISHED GALVANIZED STEEL DOWNSPOUT & COLLECTOR BOX. G.C. TO COORDINATE CIVIL ENGINEERS TO CONFIRM IF DOWNSPOUTS ARE SPLASHING ON CONCRETE PAD OR TIED TO THE STORM SEWER LINE. REFER TO MECHANICAL DRAWINGS.
25	ALL BASE FLASHING TO MATCH ADJACENT MATERIAL COLORS.
26	HOSE BIB. G.C. TO PAINT. COLOUR TO MATCH ADJACENT STUCCO COORDINATE EXACT LOCATION WITH G.C. REFER TO MECHANICAL DRAWINGS.
27	1/2" X 1/2" REVEAL LINE IN STUCCO FINISH. REFER TO DETAIL 3/A5.
28	DECORATIVE PANELS SUPPLY AND INSTALL BY SIGN COMPANY.
29	G.C TO PROVIDE CONCRETE CURB ALONG DRIVE-THRU LANE. CURB TO PROJECT 8" FROM FACE OF PANELS AND LENGTH OF CURB IS EXTENT OF FEATURE WALL.
30	MURAL GRAPHIC SUPPLY AND INSTALL BY SIGN COMPANY.
31	REAR EXT DOOR TO BE PAINT WHITE.
32	WALL SCONCE SUPPLY AND INSTALL BY SIGN COMPANY.
33	PRE-FABRICATED CANOPIES W/ PRE-WIRED RECESSED LIGHTS ABOVE DRIVE-THRU SUPPLY BY SIGN COMPANY AND INSTALL BY G.C. ALL CANOPIES IN WALL SUPPORT BY G.C. REFER TO STRUCTURAL DRAWINGS.
34	VERTICAL SIMULATED WOOD SLATS. REFER TO POPEYES MASTER SCHEDULE.
35	WALL SCONCE LIGHTING. REFER TO ELECTRICAL SCHEDULE.
36	CONCRETE SIDEWALK (BY G.C) REFER TO SITE PLAN.
37	HORIZONTAL WOOD GRAIN ENTRANCE CANOPY W/ TEAL VERTICAL & HORIZONTAL SUPPORTS SUPPLY BY SIGN COMPANY AND INSTALL BY G.C. PRE-WIRED LED LIGHT GLOBE FIXTURE.

ISSUE TABLE		
No.	Date (mm/dd/yy)	Description
01	10-27-21	2124 PROTOTYPE DOCUMENTS
02	12-15-21	2124 PROTOTYPE DOCUMENTS
REVISIONS		
No.	Date	Description
DRAWINGS REVISED AS PER DESIGN BULLETIN		
No.	Date	Description
<div><div></div><div> PROJECT NORTH</div></div> <p>THIS DRAWING IS OWNED BY OR LICENSED FOR USE BY POPEYES LOUISIANA KITCHEN (OR ITS AFFILIATED OR RELATED COMPANIES) AND MAY NOT BE REPRODUCED, USED, DOWNLOADED, DISSEMINATED, PUBLISHED OR TRANSFERRED IN ANY FORM OR BY ANY MEANS, EXCEPT WITH THE PRIOR WRITTEN CONSENT OF POPEYES LOUISIANA KITCHEN. COPYRIGHT INFRINGEMENT IS A VIOLATION OF FEDERAL LAW SUBJECT TO CRIMINAL AND CIVIL PENALTIES.</p> <p>THE CONTRACTOR IS TO VERIFY ALL DIMENSIONS AND CONDITIONS ON THE PROJECT AND TO REPORT ANY DISCREPANCIES TO THE POPEYES LOUISIANA KITCHEN REPRESENTATIVE PRIOR TO COMMENCING WORK. THESE DRAWINGS ARE NOT TO BE USED FOR CONSTRUCTION PURPOSES UNLESS INDICATED BY POPEYES LOUISIANA KITCHEN AS "ISSUED FOR CONSTRUCTION".</p> <p><b>DESIGN GUIDELINE ONLY - NOT FOR PERMIT OR CONSTRUCTION</b></p> <p>THESE DOCUMENTS MUST BE COMPLETED AND / OR MODIFIED BY A LICENSED ARCHITECT AND ENGINEER TO CONFORM TO ALL APPLICABLE CODES, AND SPECIFIC SITE CONDITIONS. THERE IS NO WARRANTY, WHETHER IMPLIED OR EXPRESSED THAT THESE DOCUMENTS MEET THE APPLICABLE CODE REQUIREMENTS. LIABILITY FOR THE DESIGN AND ANY USE OF THE DOCUMENTS IS THE SOLE RESPONSIBILITY OF THE ARCHITECT AND ENGINEER OF RECORD.</p> <div><div>Company Logo</div><div></div></div> <div><div>Project</div><div></div></div> <div><div>Store Type</div><div>US 2124 PROTOTYPE 2124-21</div></div> <div><div>Location</div><div>PROTOTYPE 2124 (U.S.)  CITY, STATE</div></div> <div><div>Drawing Title</div><div>EXTERIOR ELEVATIONS</div></div> <div><div>Drawn</div><div>XX</div><div>Checked</div><div>XX</div></div> <div><div>Scale</div><div>1/4"=1'-0"</div><div>Date</div><div>DEC 2021</div></div> <div><div>Project No.</div><div>XX</div><div>Drawing No.</div><div>A5</div></div>		



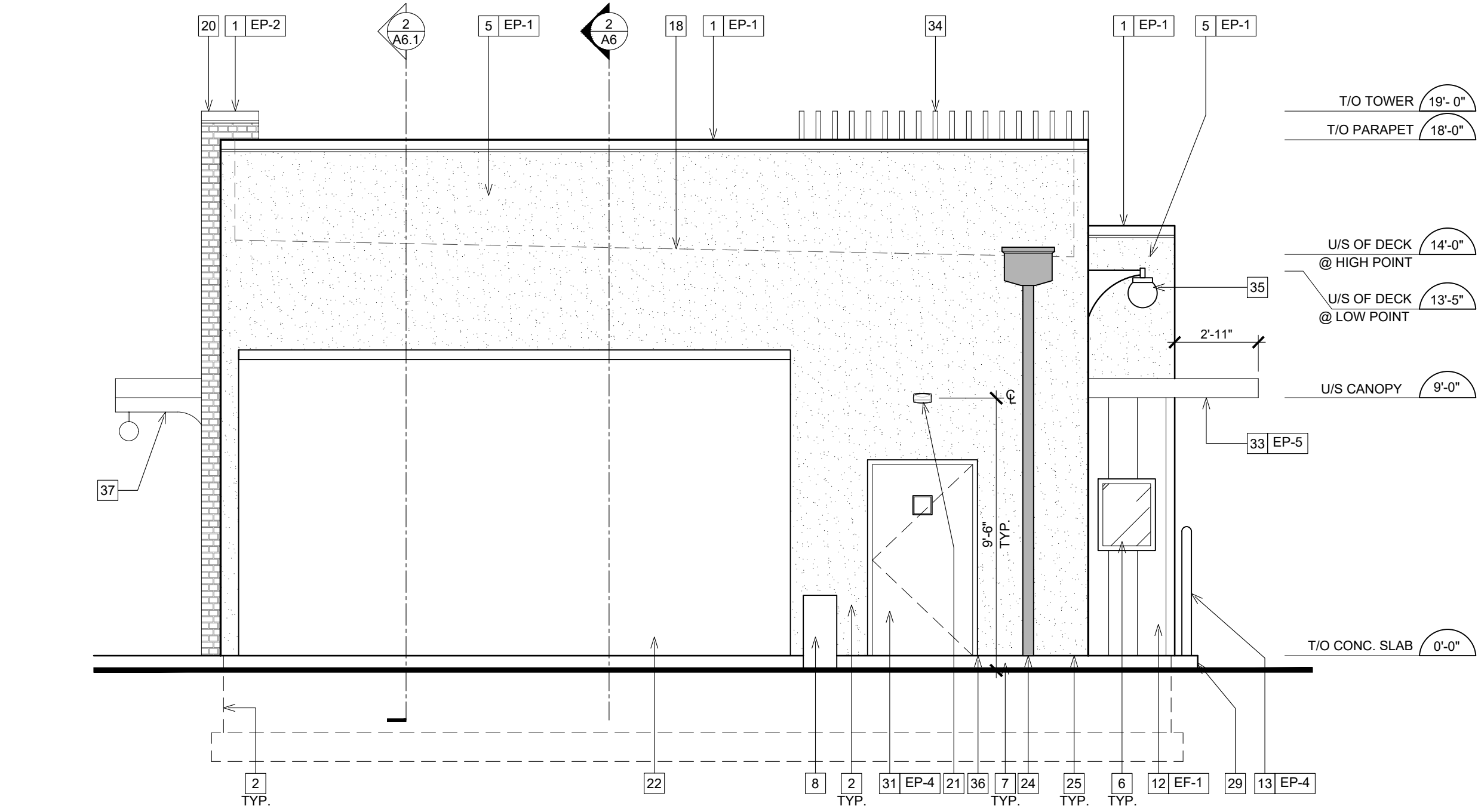
1. SEALANT / CAULKING AROUND DOOR / WINDOW FRAMES. COLOUR: TO MATCH WINDOW / DOOR FRAMES.
2. THE CONTRACTOR SHALL BECOME FAMILIAR WITH AND FOLLOW ALL DRAWINGS AND SPECIFICATIONS.

1	NOTE REFERENCE REFER TO ELEVATION NOTES
FN#	FINISH TYPE

1  
A5.1

PROPOSED REAR ELEVATION

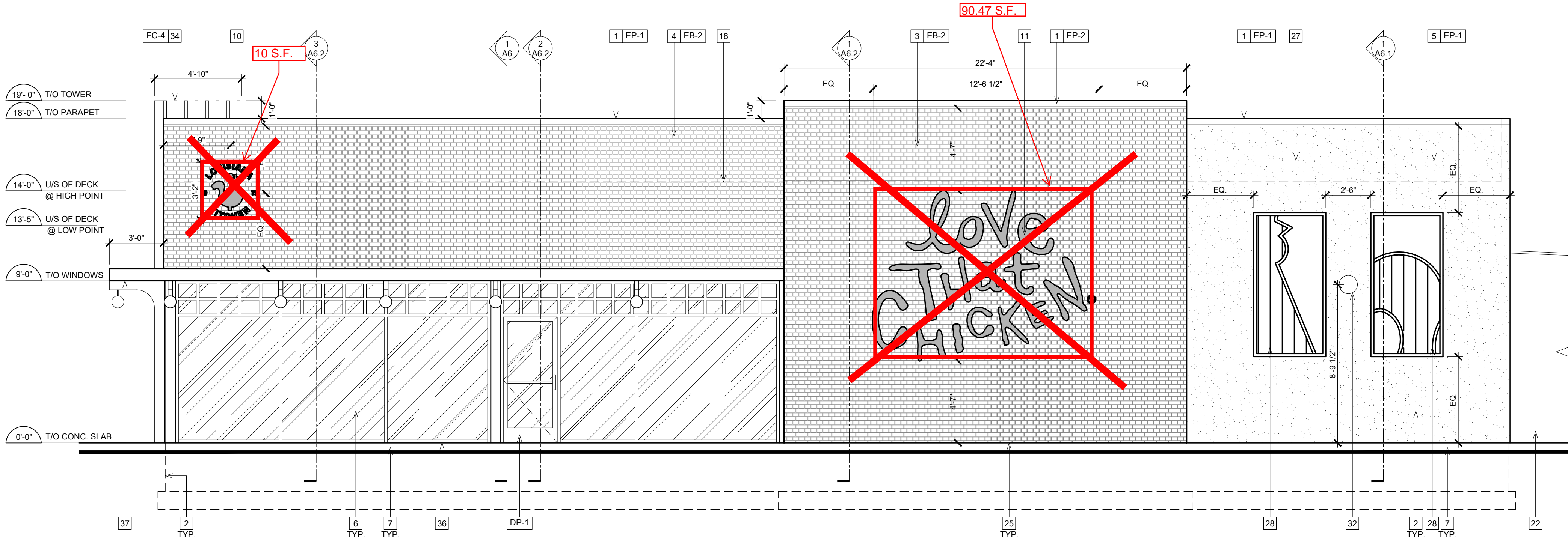
SCALE: 1/4"=1' - 0"



2  
A5.1

PROPOSED SIDE ELEVATION

SCALE: 1/4"=1' - 0"



GENERAL NOTES

- SEALANT / CAULKING AROUND DOOR / WINDOW FRAMES. COLOUR: TO MATCH WINDOW / DOOR FRAMES.
- THE CONTRACTOR SHALL BECOME FAMILIAR WITH AND FOLLOW ALL DRAWINGS AND SPECIFICATIONS.

SYMBOL LEGEND

1	NOTE REFERENCE REFER TO ELEVATION NOTES
FN#	FINISH TYPE

EXTERIOR ELEVATION NOTES

- PRE-FINISHED METAL CAP FLASHING C/W DRIP.
- G.C. TO PROVIDE AND INSTALL DOUBLE LAYER OF REINFORCING MESH TO MIN. 2'-2" ABOVE GRADE AT ALL EIFS LOCATIONS (TYP.) IN ORDER TO ATTAIN ABUSE RESISTANCE STUCCO SYSTEM.
- NICHIHA VINTAGE BRICK. COLOR: ALEXANDRIA BUFF. REFER TO POPEYES MASTER SCHEDULE.
- NICHIHA VINTAGE BRICK. COLOR: WHITE WASH. REFER TO POPEYES MASTER SCHEDULE.
- EIFS. REFER TO POPEYES MASTER SCHEDULE.
- PRE-FINISHED 'BLACK ANODIZED' ALUMINUM STOREFRONT SYSTEM WITH INSULATED GLAZING.
- EXPOSED FOUNDATION TO BE PARGED AND FREE OF IMPERFECTIONS.
- GAS UTILITY METER.
- REFER TO STRUCTURAL DRAWINGS FOR FOUNDATION WALL AND FOOTING DETAILS.
- INTERNALLY ILLUMINATED BUILDING SIGNAGE PROVIDED AND INSTALLED BY SIGN COMPANY. G.C. TO PROVIDE AND INSTALL 3/4" EXTERIOR GRADE PRESSURE TREATED PLYWOOD BACKING AND ALL FINAL ELECTRICAL CONNECTION. SIGN MANUFACTURER SHALL OBTAIN STRUCTURALLY SEALED DRAWINGS AND SIGNAGE PERMITS FROM THE CITY BASED ON LOCAL REQUIREMENTS. G.C. SHALL VERIFY ACTUAL LOCATION & SIZE OF SIGNS WITH SIGN MANUFACTURER'S APPROVED DRAWINGS AND COORDINATE LOCATIONS OF BLOCKING AND UTILITIES. G.C. TO COORDINATE WITH SIGN INSTALLER TO USE VHM DRILL BIT WHILE DRILLING FOR ELECTRICAL FEED LINES AND SIGNAGE FASTENERS. ALL ELEMENTS PROVIDED BY SIGNAGE FABRICATOR TO BE REVIEWED AND APPROVED BY POPEYES PRIOR TO PRODUCTION.
- NON-ILLUMINATED BUILDING SIGNAGE PROVIDED AND INSTALLED BY SIGN COMPANY. G.C. TO PROVIDE AND INSTALL 3/4" EXTERIOR GRADE PRESSURE TREATED PLYWOOD BACKING. SIGN MANUFACTURER SHALL OBTAIN STRUCTURALLY SEALED DRAWINGS AND SIGNAGE PERMITS FROM THE CITY BASED ON LOCAL REQUIREMENTS. G.C. SHALL VERIFY ACTUAL LOCATION & SIZE OF SIGNS WITH SIGN MANUFACTURER'S APPROVED DRAWINGS AND COORDINATE LOCATIONS OF BLOCKING AND UTILITIES. G.C. TO COORDINATE WITH SIGN INSTALLER TO USE VHM DRILL BIT WHILE DRILLING FOR ELECTRICAL FEED LINES AND SIGNAGE FASTENERS. ALL ELEMENTS PROVIDED BY SIGNAGE FABRICATOR TO BE REVIEWED AND APPROVED BY POPEYES PRIOR TO PRODUCTION.
- NICHIHA VINTAGE WOOD. COLOR: CEDAR. REFER TO POPEYES MASTER SCHEDULE.
- PROVIDE & INSTALL 6" DIAMETER STEEL PIPE BOLLARD TOP AT 4'-6" A.F.F. G.C. TO PAINT "SAFETY YELLOW". REFER TO POPEYES MASTER SCHEDULE.
- DRIVE-THRU WINDOW. REFER TO DRIVE-THRU WINDOW SCHEDULE ON SHEET A11.
- N/A.
- PRE-FINISHED GALVANIZED STEEL DOWNSPOUT & COLLECTOR BOX. G.C. TO COORDINATE WITH CIVIL ENGINEERS TO CONFIRM IF DOWNSPOUTS ARE SPLASHING ON CONCRETE PAD OR TIED TO THE STORM SEWER LINE. REFER TO MECHANICAL DRAWINGS.
- N/A.
- DASHED LINE INDICATES T/O OF ROOF BEHIND PARAPET.
- C/T CABINET AND METER.
- LINE OF PARAPET WALLS BEYOND.
- GENERAL PURPOSE EXTERIOR LIGHTING FIXTURES.
- WALK-IN COOLER/FREEZER FINISH TO BE COMPLETED BY MANUFACTURER.
- N/A.
- PRE-FINISHED GALVANIZED STEEL DOWNSPOUT & COLLECTOR BOX. G.C. TO COORDINATE CIVIL ENGINEERS TO CONFIRM IF DOWNSPOUTS ARE SPLASHING ON CONCRETE PAD OR TIED TO THE STORM SEWER LINE. REFER TO MECHANICAL DRAWINGS.
- ALL BASE FLASHING TO MATCH ADJACENT MATERIAL COLORS.
- HOSE BIB. G.C. TO PAINT. COLOUR TO MATCH ADJACENT STUCCO COORDINATE EXACT LOCATION WITH G.C. REFER TO MECHANICAL DRAWINGS.
- 1/2" X 1/2" REVEAL LINE IN STUCCO FINISH. REFER TO DETAIL 3/A5.
- DECORATIVE PANELS SUPPLY AND INSTALL BY SIGN COMPANY.
- G.C. TO PROVIDE CONCRETE CURB ALONG DRIVE-THRU LANE. CURB TO PROJECT 8" FROM FACE OF PANELS AND LENGTH OF CURB IS EXTENT OF FEATURE WALL.
- MURAL GRAPHIC SUPPLY AND INSTALL BY SIGN COMPANY.
- REAR EXIT DOOR TO BE PAINT WHITE.
- WALL SCONCE SUPPLY AND INSTALL BY SIGN COMPANY.
- PRE-FABRICATED CANOPIES W/ PRE-WIRED RECESSED LIGHTS ABOVE DRIVE-THRU SUPPLY BY SIGN COMPANY AND INSTALL BY G.C. ALL CANOPIES IN WALL SUPPORT BY G.C. REFER TO STRUCTURAL DRAWINGS.
- VERTICAL SIMULATED WOOD SLATS. REFER TO POPEYES MASTER SCHEDULE.
- WALL SCONCE LIGHTING. REFER TO ELECTRICAL SCHEDULE.
- CONCRETE SIDEWALK (BY G.C.). REFER TO SITE PLAN.
- HORIZONTAL WOOD GRAIN ENTRANCE CANOPY W/ TEAL VERTICAL & HORIZONTAL SUPPORTS SUPPLY BY SIGN COMPANY AND INSTALL BY G.C. PRE-WIRED LED LIGHT GLOBE FIXTURE.

ISSUE TABLE

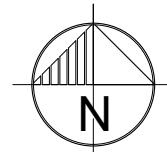
No.	Date (mm/dd/yy)	Description
01	10-27-21	2124 PROTOTYPE DOCUMENTS
02	12-15-21	2124 PROTOTYPE DOCUMENTS

REVISIONS

No.	Date	Description

DRAWINGS REVISED AS PER DESIGN BULLETIN

No.	Date	Description



PROJECT NORTH

THIS DRAWING IS OWNED BY OR LICENSED FOR USE BY POPEYES LOUISIANA KITCHEN, OR ITS AFFILIATED OR RELATED COMPANIES, AND MAY NOT BE REPRODUCED, USED, DOWNLOADED, DISSEMINATED, PUBLISHED, OR TRANSFERRED IN ANY FORM OR BY ANY MEANS, EXCEPT WITH THE PRIOR WRITTEN CONSENT OF POPEYES LOUISIANA KITCHEN. COPYRIGHT INFRINGEMENT IS A VIOLATION OF FEDERAL LAW SUBJECT TO CRIMINAL AND CIVIL PENALTIES.

THE CONTRACTOR IS TO VERIFY ALL DIMENSIONS AND CONDITIONS ON THE PROJECT AND TO REPORT ANY DISCREPANCIES TO THE POPEYES LOUISIANA KITCHEN REPRESENTATIVE PRIOR TO COMMENCING WORK. THESE DRAWINGS ARE NOT TO BE USED FOR CONSTRUCTION PURPOSES UNLESS INDICATED BY POPEYES LOUISIANA KITCHEN AS ISSUED FOR CONSTRUCTION.

DESIGN GUIDELINE ONLY - NOT FOR PERMIT OR CONSTRUCTION

THESE DOCUMENTS MUST BE COMPLETED AND / OR MODIFIED BY A LICENSED ARCHITECT AND ENGINEER TO CONFORM TO ALL APPLICABLE CODES, AND SPECIFIC SITE CONDITIONS. THERE IS NO WARRANTY, WHETHER IMPLIED OR EXPRESSED THAT THESE DOCUMENTS MEET THE APPLICABLE CODE REQUIREMENTS. LIABILITY FOR THE DESIGN AND ANY USE OF THE DOCUMENTS IS THE SOLE RESPONSIBILITY OF THE ARCHITECT AND ENGINEER OF RECORD.

Company Logo



POPEYES

Store Type  
US 2124 PROTOTYPE  
2124-21

Location  
**PROTOTYPE  
2124 (U.S.)**  
CITY, STATE

Drawing Title  
**EXTERIOR  
ELEVATIONS**

Drawn XX	Checked XX
Scale 1/4"=1'-0"	Date DEC 2021
Project No. XX	Drawing No. A5.1

POPEYES LOUISIANA KITCHEN MODEL 2124, ADDRESS: CITY, STATE: 2124 PROTOTYPE DOCUMENTS (DEC 15, 2021) STORE NO. XXXX