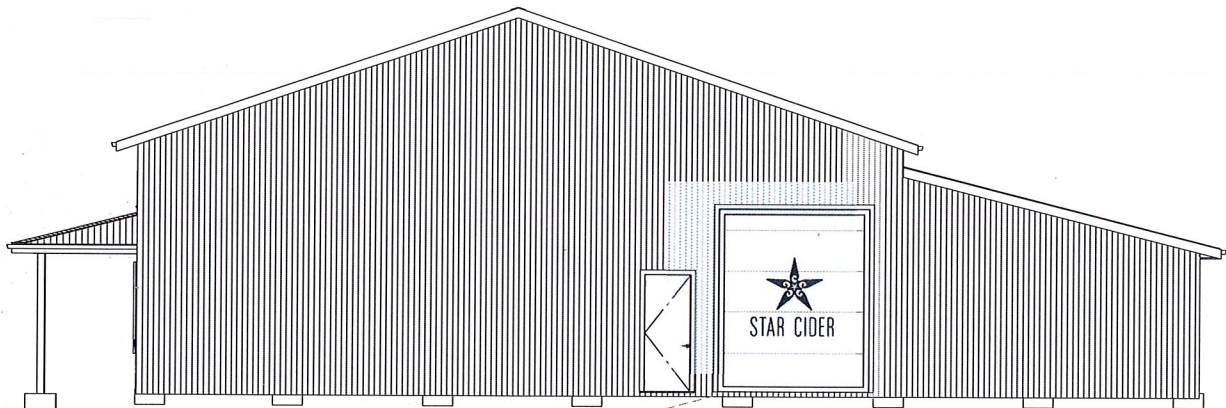
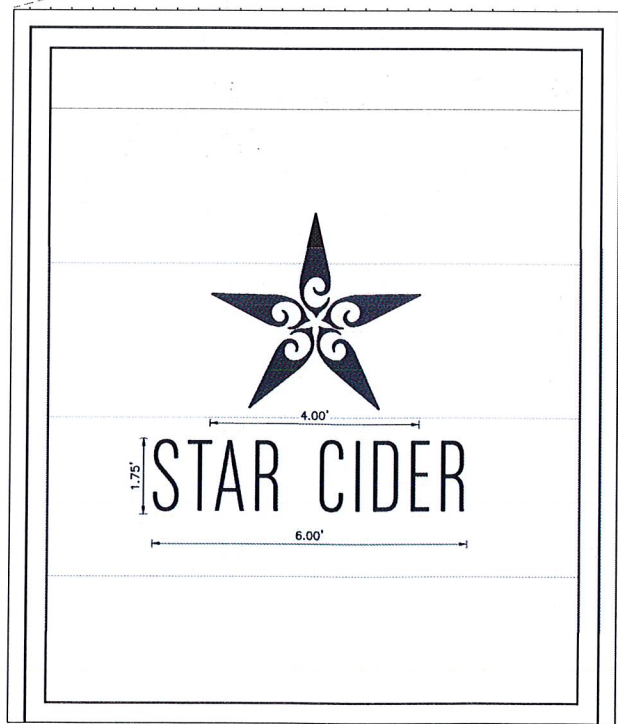


WEST SIDE OF BUILDING

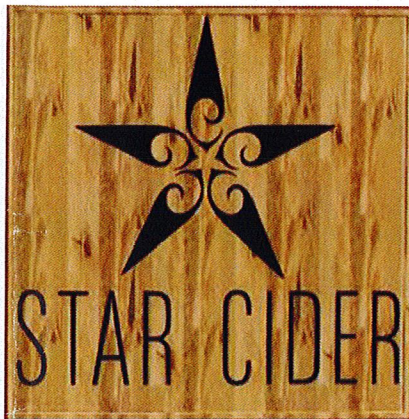


SOUTH SIDE OF BUILDING



NOTES:
THE SIGN DIMENSIONS WILL BE 6' X 6'. THE STAR CIDER LOGO AND THE WORDS STAR CIDER WILL BE PAINTED ON THE GARAGE DOOR WITH BLACK PAINT. THE LETTERS WILL BE 1.75' TALL. THE STAR CIDER LOGO WILL BE 4' IN DIAMETER. THE SIGN WILL BE SEALED WITH POLYURETHANE TO SEAL THE PAINT AND PREVENT FLAKING AND AGING. DOOR SIZE SUBJECT TO ARCHITECTURAL REVIEW.

3 OHD SIGN – SOUTH SIDE BUILDING
NTS



2 WOOD SIGN MOCK UP
NTS



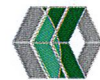
1 WOOD SIGN – WEST SIDE BUILDING
NTS

NOTES:
THE SIGN DIMENSIONS WILL BE 6' X 6'. THE SIGN BACKING WILL BE MADE OF WOOD THAT IS 1" THICK AND BUILT ON A WOOD FRAME THAT IS CONNECTED TO THE BARN WITH METAL LAG SCREWS. THE STAR CIDER LOGO AND THE WORDS STAR CIDER WILL BE PAINTED ON THE WOOD SIGN WITH BLACK PAINT. THE LETTERS WILL BE 1.75' TALL. THE STAR CIDER LOGO WILL BE 4' IN DIAMETER. THE SIGN WILL BE SEALED WITH POLYURETHANE TO SEAL THE PAINT AND PREVENT FLAKING AND AGING.



4 ROAD SIGN
NTS

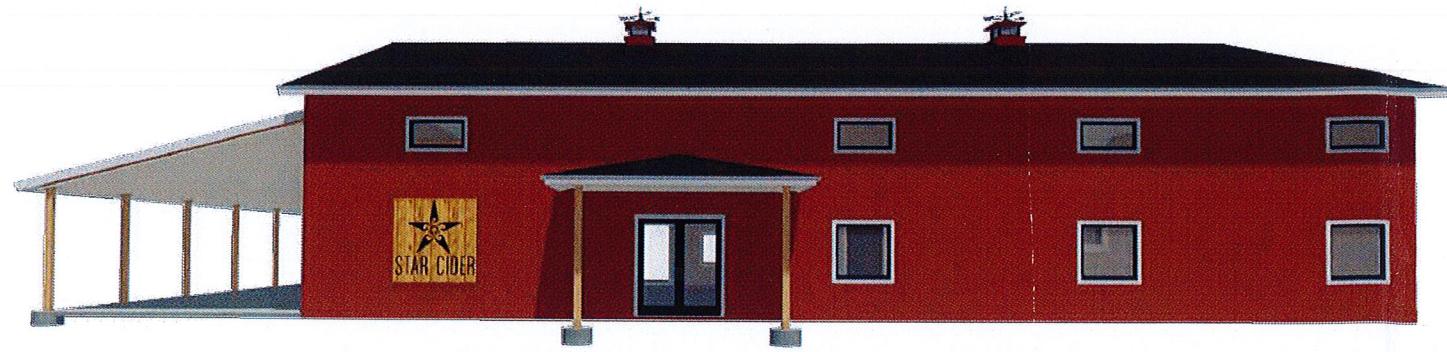
NOTES:
6-8" DIAMETER NATURAL LOCUST HARDWOOD LOGS STATIONED IN CONCRETE BASE. THE LOGS WILL BE FASTENED WITH INTERLOCKING JOINTS AND METAL LAG SCREWS FOR ADDED SUPPORT. THE 2 VERTICAL LOG SIGN POSTS WILL BE 7' TALL AND THE TOP HORIZONTAL LOG WILL BE 5.5' LONG. THE INNER SIGN WILL BE MADE OF STEEL AND WILL BE APPROXIMATELY 1/4" THICK. THE STAR CIDER LOGO WILL BE CUT INTO THE METAL WITH A CAD LASER CUTTER. THE STAR CIDER WORDS WILL BE BLACK AND WILL BE 10" TALL. THE STAR CIDER LOGO WILL BE 3' IN DIAMETER. THE METAL SIGN WILL BE 4' X 4'. THE METAL SIGN WILL BE HUNG FROM THE HORIZONTAL SIGN POST USING EYELETS AND METAL CABLE.



REVISIONS AND APPROVALS			
NO.	DATE	BY	DESCRIPTION OF REVISION OR APPROVAL
1	06/22/18	MCT	PER PRC

FINAL SITE PLAN FOR:
STAR CIDER
NEW RESEARCH & TASTING FACILITY
3365 EAST LAKE RD
TOWN OF CANANDAIGUA
COUNTY OF ONTARIO
STATE OF NEW YORK

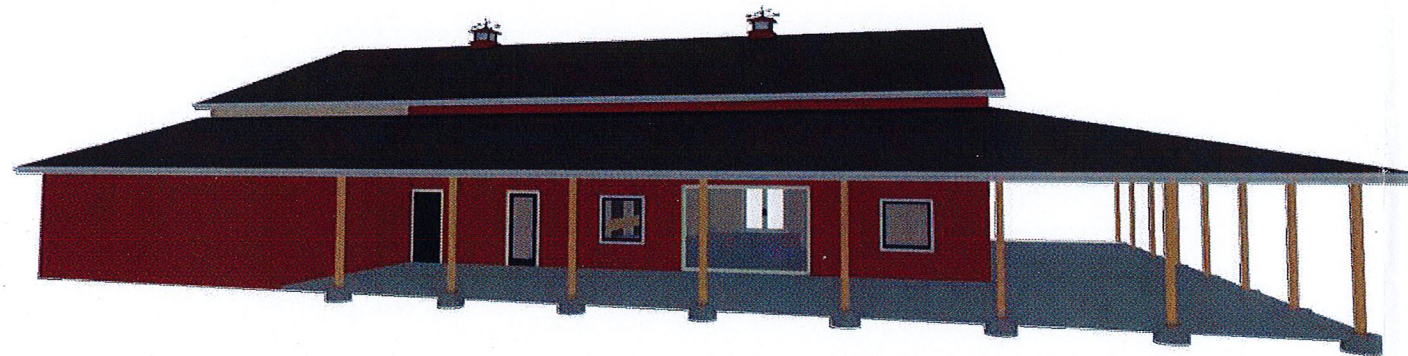
DETAILS	
DRAWN BY:	MCT
DESIGNED BY:	BAM
CHECKED BY:	BAM
SCALE:	AS NOTED
JOB NO.:	16-073
DATE:	06/13/2018
TAX MAP#:	98.11-2-8.000



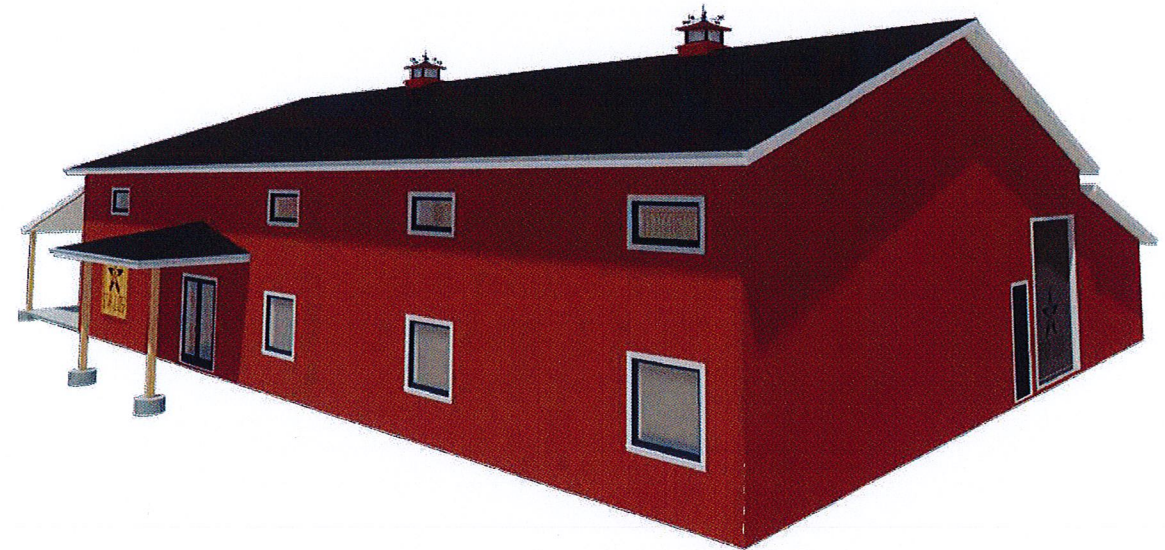
WEST



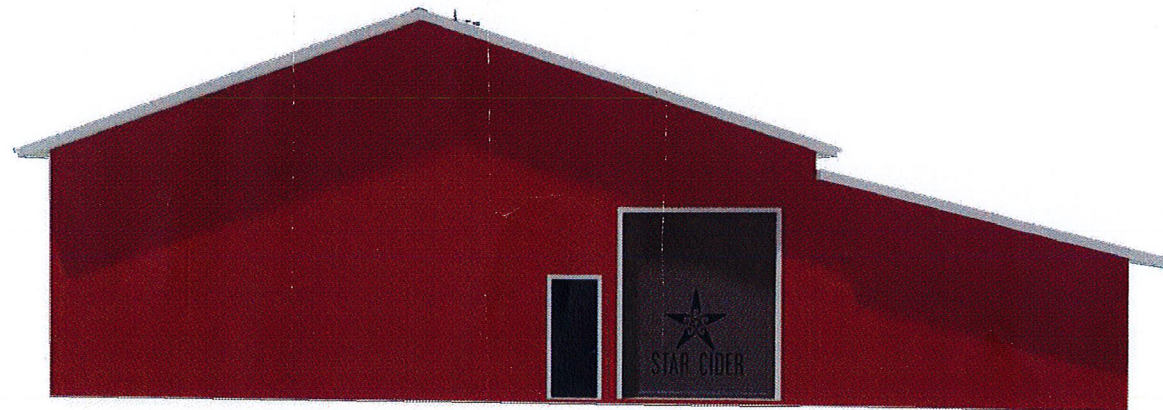
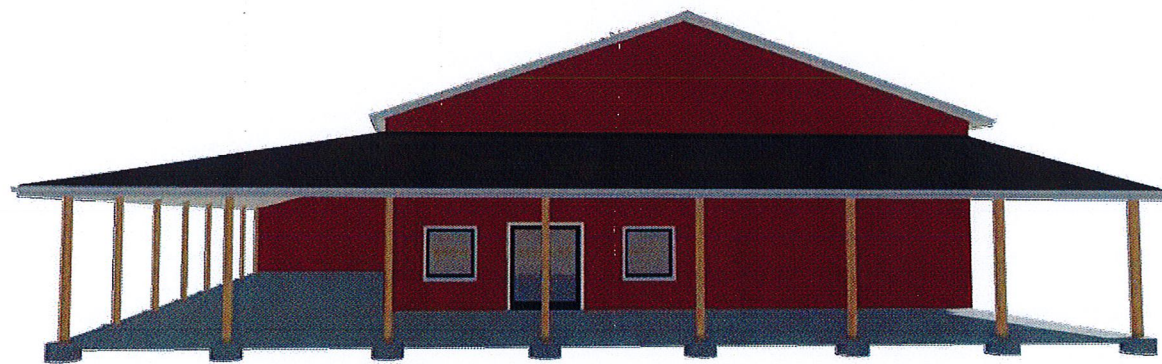
NORTH/EAST



EAST



SOUTH/WEST



REVISIONS AND APPROVALS				
NO.	DATE	DESCRIPTION OF REVISION OR APPROVAL	BY	MCF
1	06/22/18	PER PRC		

FINAL SITE PLAN FOR:
STAR CIDER
NEW RESEARCH & TASTING FACILITY
3365 EAST LAKE RD
TOWN OF CANANDAIGUA
COUNTY OF ONTARIO
STATE OF NEW YORK

DRAWING TITLE:	
ARCHITECTURAL RENDERING	
DRAWN BY:	MCF
DESIGNED BY:	BAM
CHECKED BY:	BAM
SCALE:	AS NOTED
JOB NO.:	16-073
DATE:	06/15/2018
TAX MAP#:	98.11-2-8.000