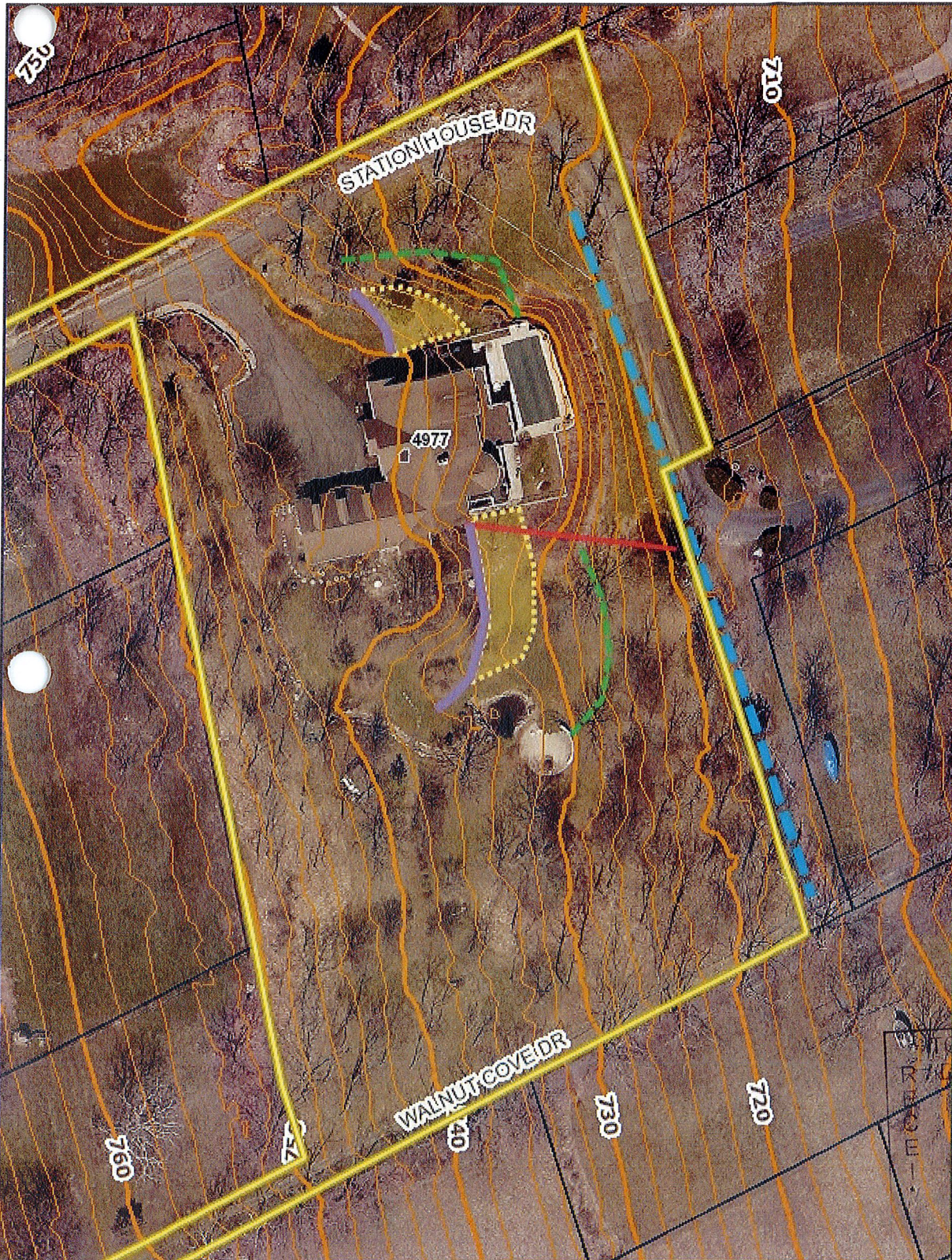
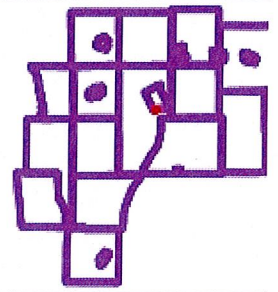




Proposed Development - 4977 Station House Dr



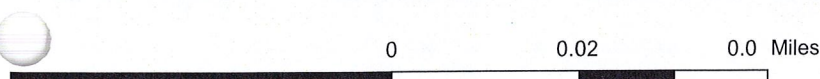
Legend

- Address Points
- Thruway Exits
- Tax Parcels
- Streets
 - Interstate
 - State or US Routes
 - County Roads
 - Local Public Roads
 - Private Roads
- Railroads
- Streams
- Municipal Boundaries
- Finger Lakes Region
- Northwest Quadrant
 - Red: Band_1
 - Green: Band_2
 - Blue: Band_3
- Northeast Quadrant
 - Red: Band_1
 - Green: Band_2
 - Blue: Band_3
- Southeast Quadrant
 - Red: Band_1
 - Green: Band_2
 - Blue: Band_3
- Southwest Quadrant
 - Red: Band_1
 - Green: Band_2
 - Blue: Band_3

TOWN OF CANANDAIGUA
DEVELOPMENT OFFICE

AUG 10 2020

Map Created: 8/10



1: 1,128

This map and information is provided AS IS and Ontario County makes no warranties or guarantees, expressed or implied, including warranties of title, non-infringement, merchantability and that of fitness for a particular purpose concerning this map the information herein. User assumes all risks and responsibility for determining whether this map is sufficient for purposes intended.

Notes

Purple = Retaining Wall
Yellow = Area Regraded
Green = Silt Fencing
Red = Utilities
Blue = Existing Drainage Swale