

## LANDSCAPE SPECIFICATIONS

### TOPSOIL

TOPSOIL MATERIAL SHALL CONFORM TO THE REQUIREMENTS OF NYSDOT SPECIFICATION SECTION 713, OR SHALL BE SUITABLE MATERIAL APPROVED BY THE PROJECT ENGINEER.

MINIMUM THICKNESS OF 3-INCHES.

AREAS RECEIVING TOPSOIL SHALL BE LEFT NEATLY GRADED AND READY TO RECEIVE SEEDING.

### SEEDING

WORK FOR SEEDING SHALL CONSIST OF PREPARING GROUND SURFACES FOR SEEDING, FURNISHING AND INSTALLING FERTILIZER, SEED, AND MULCH ON AREAS INDICATED BY THE PLANS, STANDARD DETAILS AND IN AREAS DIRECTED BY THE PROJECT ENGINEER.

MATERIALS FOR SEED, FERTILIZER AND MULCH SHALL CONFORM TO THE REQUIREMENTS OF NYSDOT SPECIFICATION SECTION 713, OR SHALL BE APPROVED BY THE PROJECT ENGINEER.

THE AREAS TO RECEIVE SEEDING SHALL BE THOROUGHLY PREPARED PRIOR TO SEEDING. SEED AND FERTILIZER SHALL BE SPREAD IN THE AMOUNT SPECIFIED AND SHALL BE EVENLY DISTRIBUTED ON THE AREAS TO BE SEEDED.

SUGGESTED SEED MIX (OR EQUAL):

DISTURBED LAWN AREAS		
NAME	lbs/ACRE	lbs/1,000 SQ. FT.
65% KENTUCKY BLUEGRASS	85-114	2.0-2.6
20% PERENNIAL RYEGRASS	26-35	0.6-0.8
15% FINE FESCUE	19-26	0.4-0.6
TOTAL	130-175	3.0-4.0

STEEP SLOPE/BANK		
NAME	lbs/ACRE	lbs/1,000 SQ. FT.
TALL FESCUE	100	2.3
RYE GRASS	40	0.9
TOTAL	140	3.2

SUGGESTED FERTILIZER (OR EQUAL):

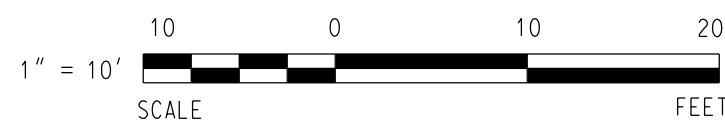
NYSBOT 713-03 TYPE NO. 3, 10-6-4 (50% N-U-P)

FERTILIZER SHALL BE APPLIED AT THE RATE OF 800 POUNDS PER ACRE.

### GROUND COVER

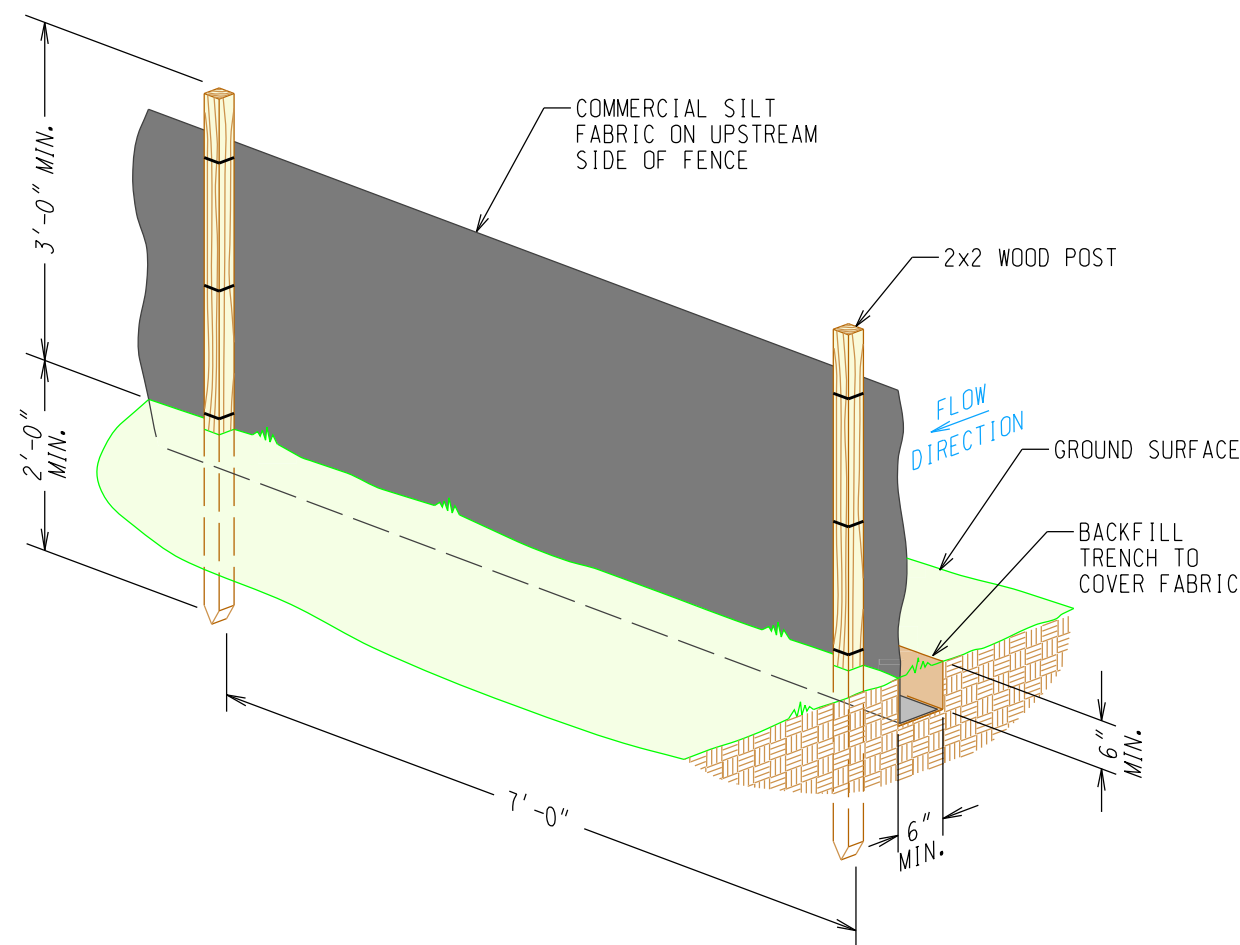
GROUND COVER SHALL CONSIST OF PERIWINKLE AND LIRIOPE. EACH GROUND COVER SPECIES SHALL BE PLANTED ALTERNATELY AND ON SPACINGS OF APPROXIMATELY 6 FEET CENTER-TO-CENTER THROUGHOUT ENTIRE BANK AREA.

## EROSION & SEDIMENT CONTROL PLAN



PROJECT TIME SCHEDULE		
DESCRIPTION	INITIATED	COMPLETED
MAJOR PHASES OF PROJECT	18 DAYS	--
MAJOR SITE PREPARATION ACTIVITIES	2 DAYS	--
INSTALLATION OF TEMPORARY AND PERMANENT VEGETATION AND DRAINAGE, EROSION AND SEDIMENT CONTROL FACILITIES	1 DAY	--
DURATION (IN DAYS) OF EXPOSURE OF ALL MAJOR AREAS OF SITE PREPARATION BEFORE THE INSTALLATION OF SEDIMENT AND EROSION CONTROL MEASURES	0 DAYS *	

\* CONSTRUCTION WILL NOT PROCEED PRIOR TO INSTALLATION OF FLOATING SILT BARRIERS IN LAKE.

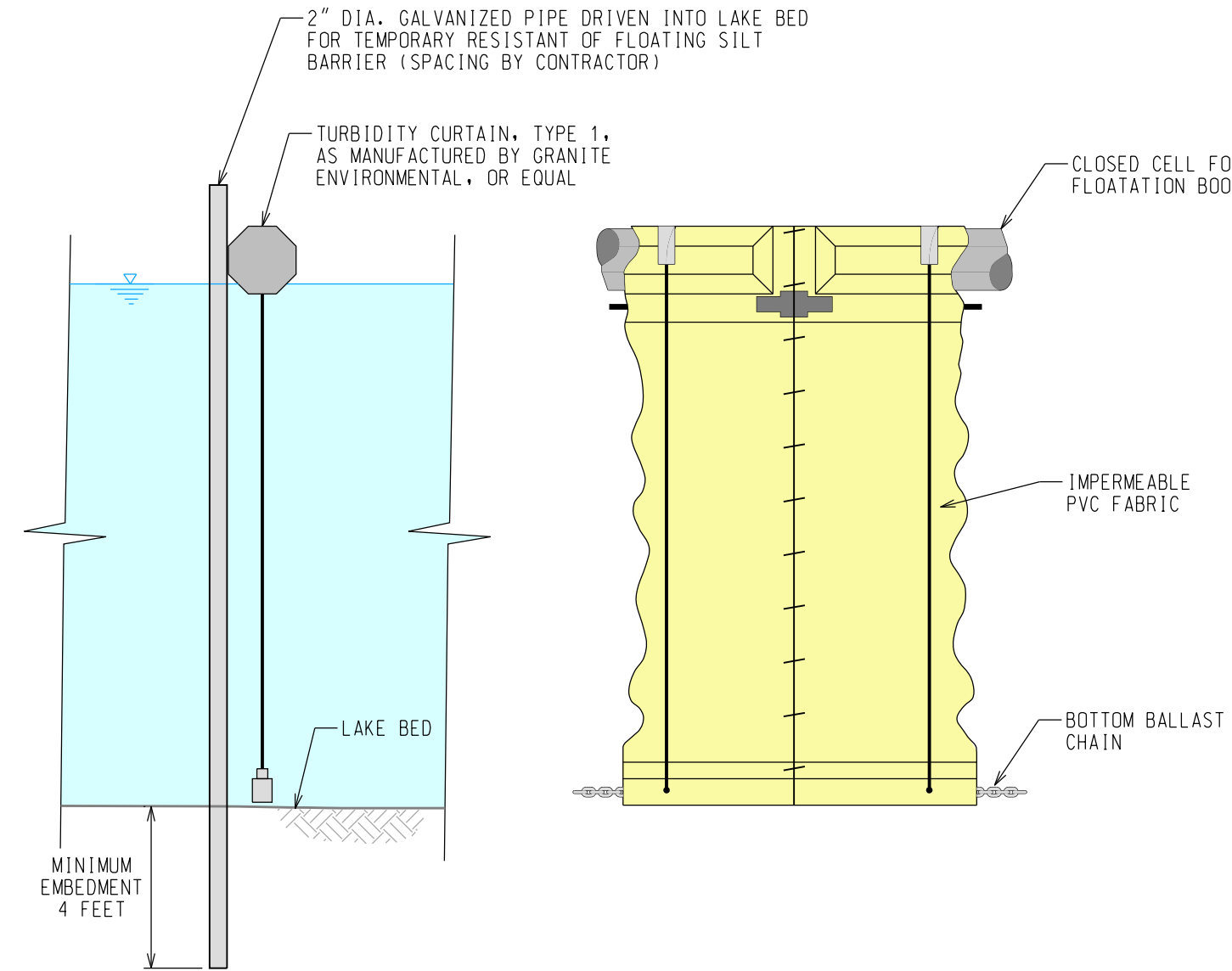


### NOTES:

1. FILTER CLOTH SHALL BE MIRAFI 100X, "STABLELINK T140N" OR APPROVED EQUAL. IF A PREFABRICATED UNIT IS UTILIZED USE ENVIROFENCE OR APPROVED EQUAL.
2. WHEN TWO SECTIONS OF FILTER CLOTH ADJOIN EACH OTHER THEY SHALL BE OVERLAPPED BY SIX INCHES AND FOLDED.
3. MAINTENANCE SHALL BE PERFORMED AS NEEDED AND MATERIAL REMOVED WHEN "BULGES" DEVELOP IN THE SILT FENCE.

## SILT FENCE DETAIL

SCALE = 1" = 2'



### NOTE:

1. WHEN TWO SECTIONS OF TURBIDITY CURTAIN ADJOIN EACH OTHER, CONNECT PER MANUFACTURER'S REQUIREMENTS.

## FLOATING TURBIDITY (SILT) CURTAIN DETAIL

NOT TO SCALE

FINAL SITE PLAN

FOR TOWN PLANNING BOARD APPROVAL