

Town of Canandaigua

5440 Route 5 & 20 West
Canandaigua, NY 14424
(585) 394-3300
FAX (585) 394-9476

Planning & Public Works Committee Agenda

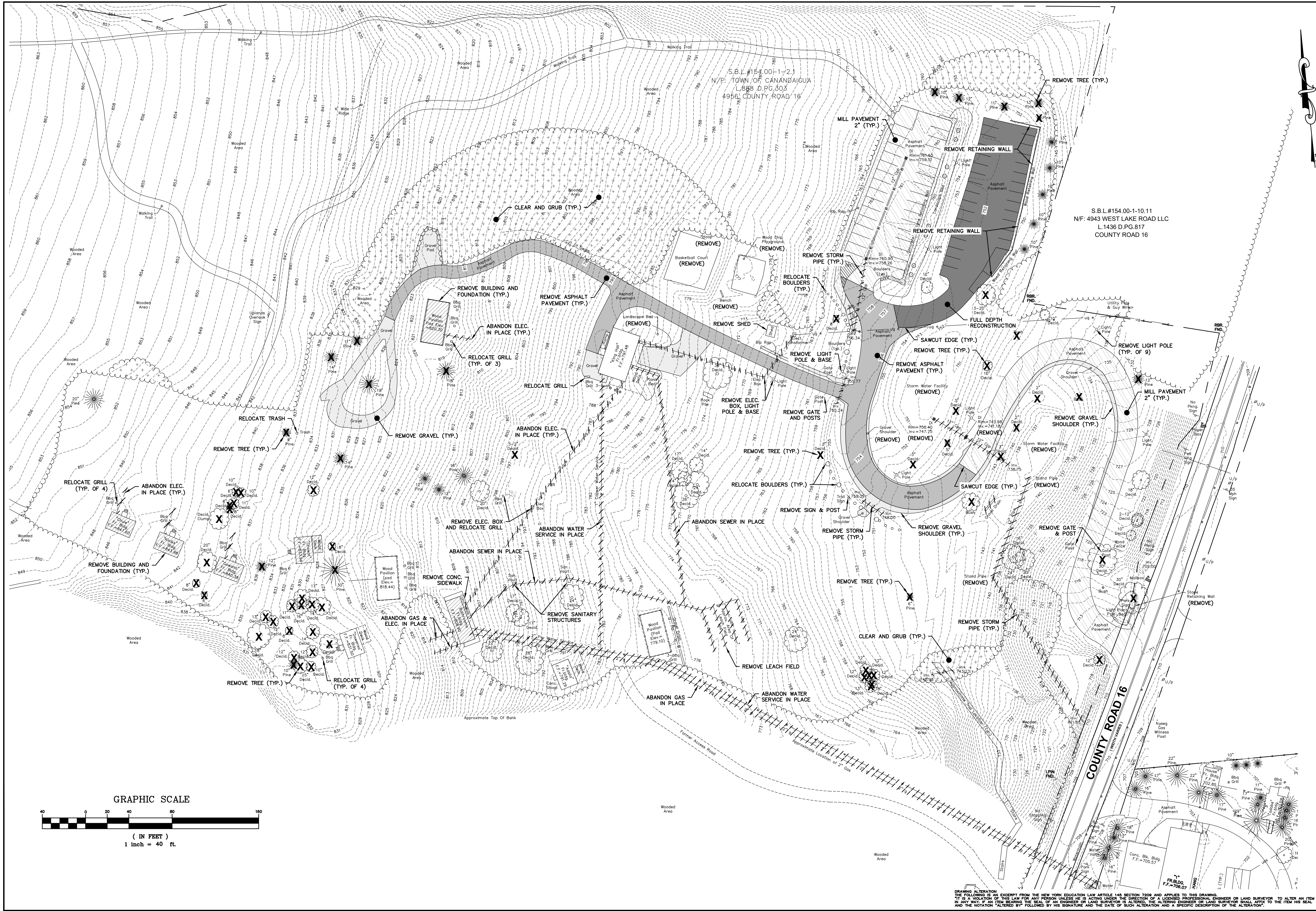
Friday Sept 13, 2024 -10:00 AM

Join Zoom Meeting

<https://us02web.zoom.us/j/82621757406?pwd=SmZ3QU0vM1hIMVVMblM1cmhTTHJOZz09>

1. North road construction plans and budget
2. Onanda park upland progress
3. Outhouse Park road progress and budget
4. Cdga-Farmington water tank update
5. Uptown planning for larger water main
6. Seneca Point Road culvert progress report
7. Storm water projects

N:\0300_24000_000\dwg\SITE\Onanda Uplands - Base.dwg dwg, 9/12/2024 2:31:26 PM, AutoCAD PDF (General Documentation).pc3

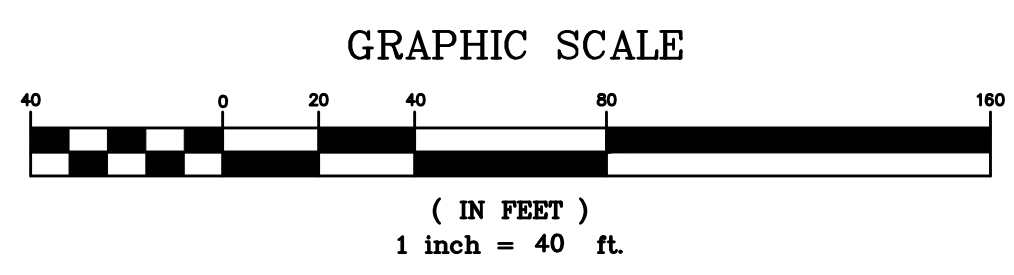
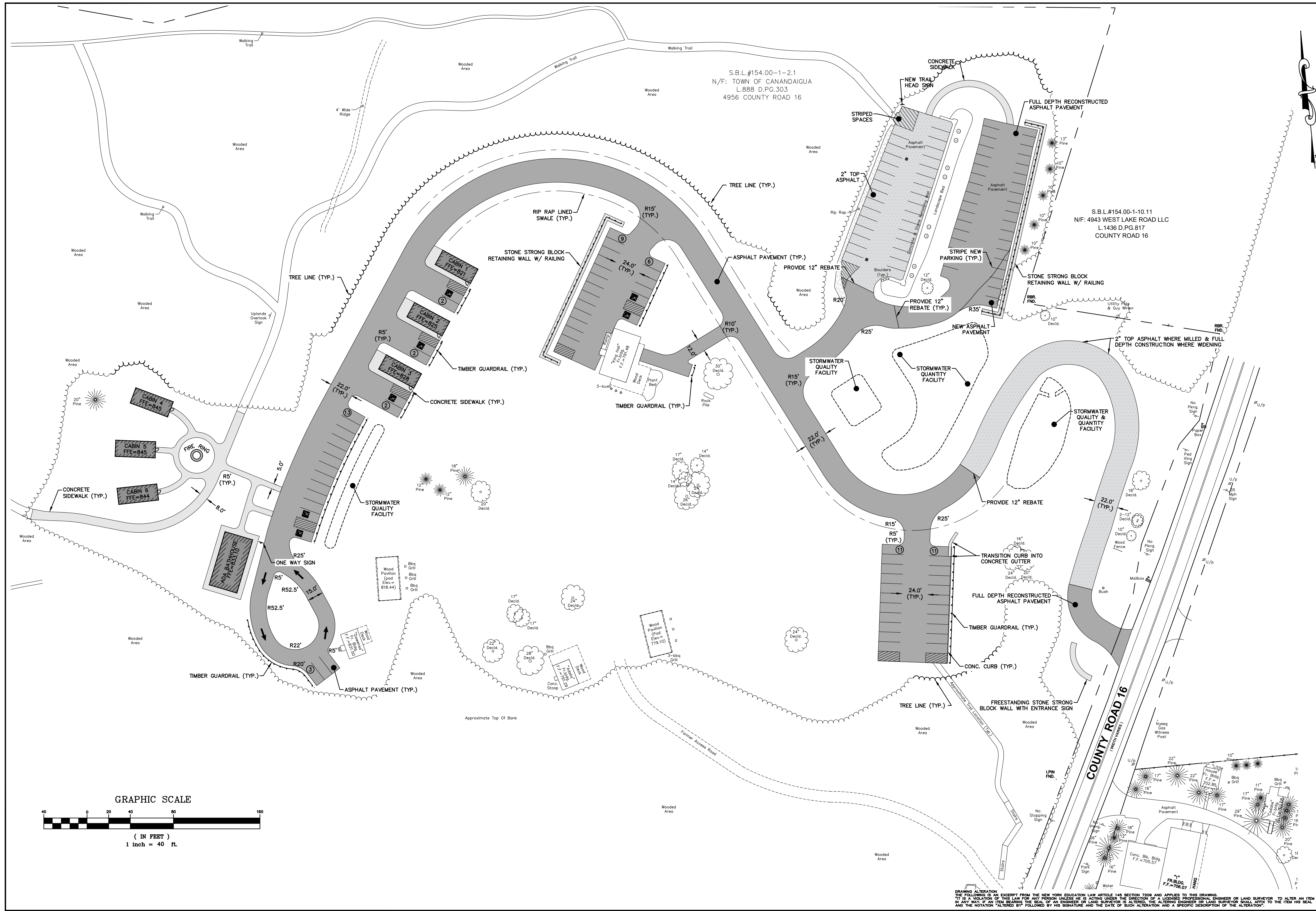


Project Title:		ONANDA PARK - UPLAND AREA IMPROVEMENTS	
Drawn By:		JHT	
Checked By:		SWS & TUF	
Scale:		1"=40'	
Date:		2/8/2023	
Project No.:		0300.22014	
Sheet No.:		G-1	
Drawing Title:		EXISTING CONDITIONS & DEMO PLAN	
Project:		4965 COUNTY ROAD 16 CANANDAIGUA, NEW YORK	
No.:		Revisions and Descriptions	
By:		Date	
Copyright © 2024 MRB Group		All Rights Reserved	

MRB group
 Engineering, Architecture & Surveying, D.P.C.
 The Calver Road Armory, 145 Calver Road,
 Suite 160, Rochester, New York 14620
 Phone: 585-381-9250
 www.mrbgroup.com

DRAWING ALTERATION
 THE FOLLOWING IS AN EXCERPT FROM THE NEW YORK EDUCATION LAW ARTICLE 145 SECTION 7209 AND APPLIES TO THIS DRAWING.
 "IT IS A VIOLATION OF THIS LAW FOR ANY PERSON UNLESS HE IS ACTING UNDER THE DIRECTION OF A LICENSED PROFESSIONAL ENGINEER OR LAND SURVEYOR TO ALTER AN ITEM IN ANY MANNER IF AN ITEM BEARING HIS SEAL AS AN ENGINEER OR LAND SURVEYOR IS ALTERED. THE ALTERING ENGINEER OR LAND SURVEYOR SHALL AFFIX TO THE ITEM HIS SEAL AND THE NOTATION "ALTERED BY" FOLLOWED BY HIS SIGNATURE AND THE DATE OF SUCH ALTERATION AND A SPECIFIC DESCRIPTION OF THE ALTERATION."

N:\0300.22014\000\dwg\SITE\Onanda Uplands - Base.dwg.dwg, 9/12/2024 2:31:29 PM, AutoCAD PDF (General Documentation).pc3

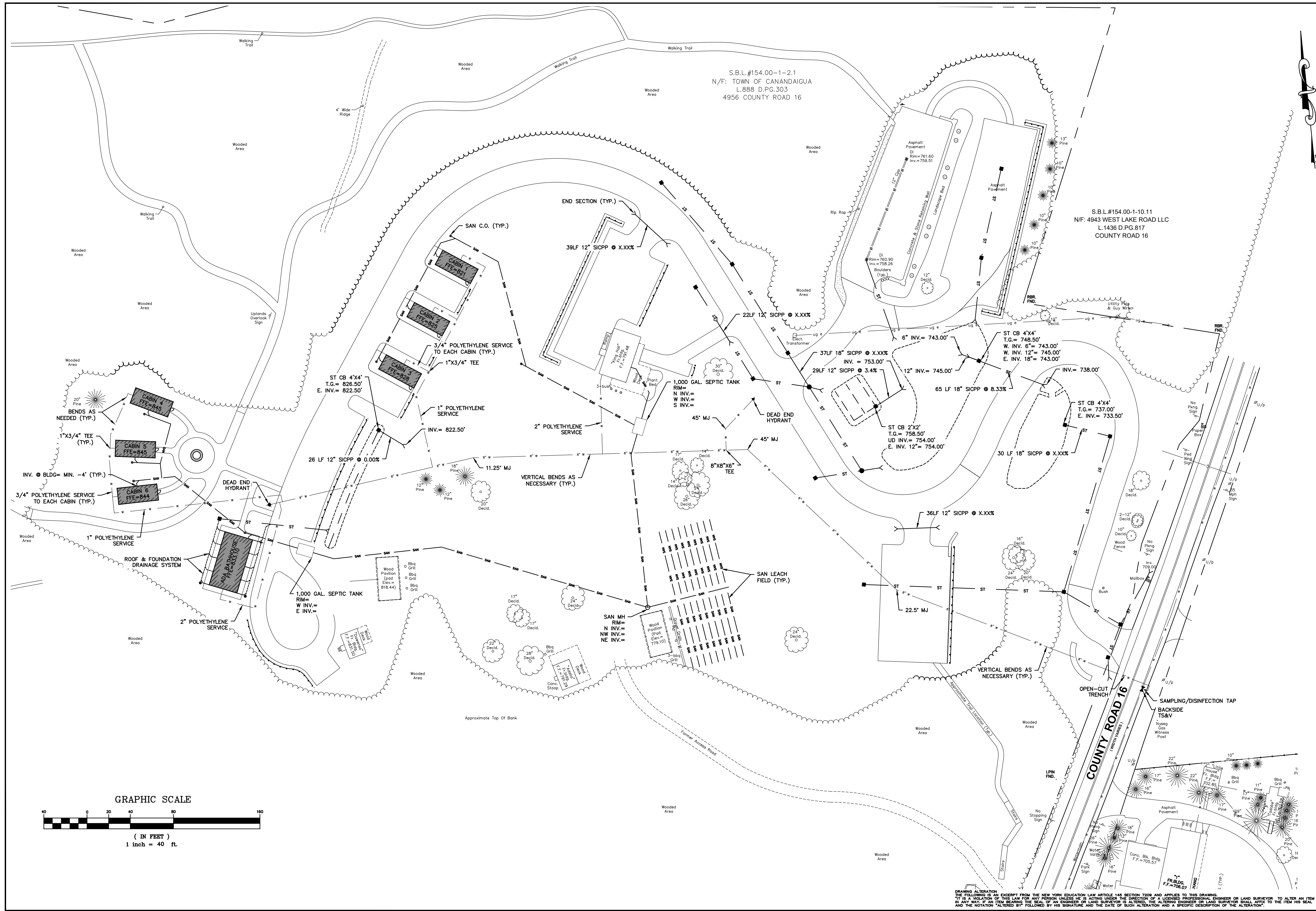


DRAWING ALTERATION
THE FOLLOWING IS AN EXCERPT FROM THE NEW YORK EDUCATION LAW ARTICLE 145 SECTION 7209 AND APPLIES TO THIS DRAWING.
"IT IS A VIOLATION OF THIS LAW FOR ANY PERSON UNLESS HE IS ACTING UNDER THE DIRECTION OF A LICENSED PROFESSIONAL ENGINEER OR LAND SURVEYOR TO ALTER AN ITEM IN ANY WAY IF AN ITEM BEARING THE SEAL OF AN ENGINEER OR LAND SURVEYOR IS ALTERED. THE ALTERING ENGINEER OR LAND SURVEYOR SHALL AFFIX TO THE ITEM HIS SEAL AND THE NOTATION "ALTERED BY" FOLLOWED BY HIS SIGNATURE AND THE DATE OF SUCH ALTERATION AND A SPECIFIC DESCRIPTION OF THE ALTERATION."

Project Title:		ONANDA PARK - UPLAND AREA IMPROVEMENTS	
Drawn By:		JHT	
Checked By:		SWS & TUF	
Scale:		1" = 40'	
Date:		2/8/2023	
Project No.:		0300.22014	
Sheet No.:		G-2	
Drawing Title:		SITE PLAN	
Revisions and Descriptions:		No. _____	
By:		_____	
Date:		_____	
Copyright © 2024 MRB Group All Rights Reserved			

MRB group
Engineering, Architecture & Surveying, D.P.C.
The Culver Road Armory, 145 Culver Road,
Suite 1607, Rochester, New York 14620
Phone: 585-381-9250
www.mrbgroup.com

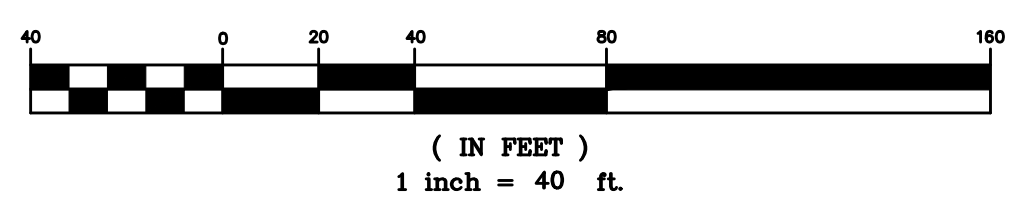
N:\0300.2\0300.00\dwg\SITE\Onanda Uplands - Base.dwg.dwg, 9/12/2024 2:31:30 PM, AutoCAD PDF (General Documentation).pc3



S.B.L.#154.00-1-2.1
 N/F: TOWN OF CANANDAIGUA
 L.888 D.PG.303
 4956 COUNTY ROAD 16

S.B.L.#154.00-1-10.11
 N/F: 4943 WEST LAKE ROAD LLC
 L.1436 D.PG.817
 COUNTY ROAD 16

GRAPHIC SCALE

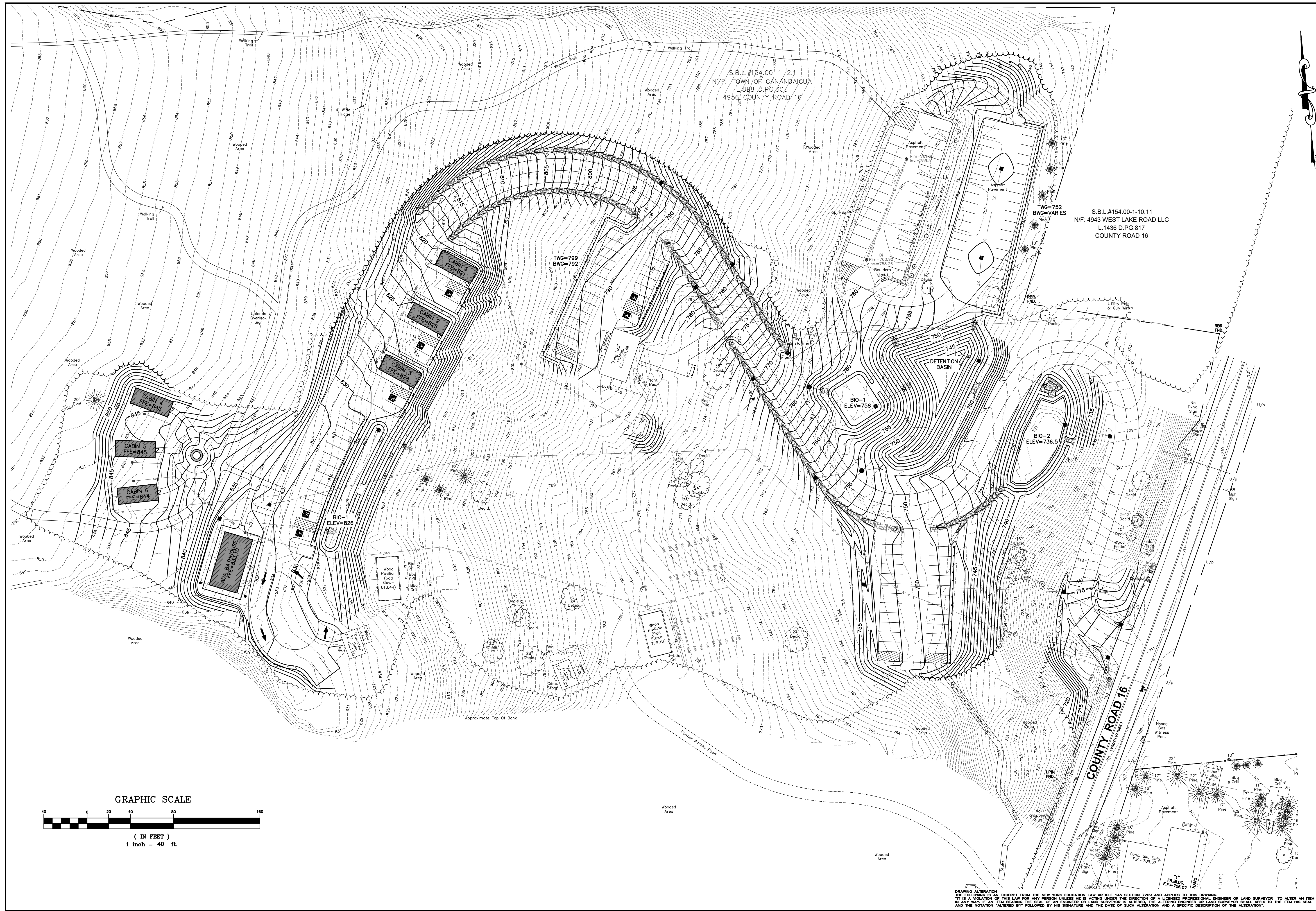


DRAWING ALTERATION
 THE FOLLOWING IS AN EXCERPT FROM THE NEW YORK EDUCATION LAW ARTICLE 145 SECTION 7209 AND APPLIES TO THIS DRAWING:
 "IT IS A VIOLATION OF THIS LAW FOR ANY PERSON UNLESS HE IS ACTING UNDER THE DIRECTION OF A LICENSED PROFESSIONAL ENGINEER OR LAND SURVEYOR TO ALTER AN ITEM IN ANY MANNER IF AN ITEM BEARING THE SEAL OF AN ENGINEER OR LAND SURVEYOR IS ALTERED. THE ALTERING ENGINEER OR LAND SURVEYOR SHALL AFFIX TO THE ITEM HIS SEAL AND THE NOTATION "ALTERED BY" FOLLOWED BY HIS SIGNATURE AND THE DATE OF SUCH ALTERATION AND A SPECIFIC DESCRIPTION OF THE ALTERATION."

Project Title:		ONANDA PARK - UPLAND AREA IMPROVEMENTS	
Project No.:		4965 COUNTY ROAD 16	
Location:		CANANDAIGUA, NEW YORK	
Drawing Title:		UTILITY PLAN	
Drawn By:	JHT	Checked By:	SWS & TUF
Scale:	1"=40'	Date:	2/8/2023
Project No.:		0300.22014	
Sheet No.:		G-3	
Project Name:		ONANDA PARK - UPLAND AREA IMPROVEMENTS	
Project Address:		4965 COUNTY ROAD 16	
Project Location:		CANANDAIGUA, NEW YORK	
Project Date:		2/8/2023	
Project Engineer:		MRB Group	
Project Surveyor:		MRB Group	
Project Designer:		MRB Group	
Project Checker:		MRB Group	
Project Approver:		MRB Group	
Project Revisions:		MRB Group	
Project Copyright:		MRB Group	
Project All Rights Reserved:		MRB Group	

MRB group
 Engineering, Architecture & Surveying, D.P.C.
 The Calver Road Armory, 145 Calver Road,
 Suite 101, Rochester, New York 14620
 Phone: 585-381-9250
 www.mrbgroup.com

N:\0300.22014\0300.22014.dwg - Base.dwg.dwg, 9/12/2024 2:31:31 PM, AutoCAD PDF (General Documentation).pc3



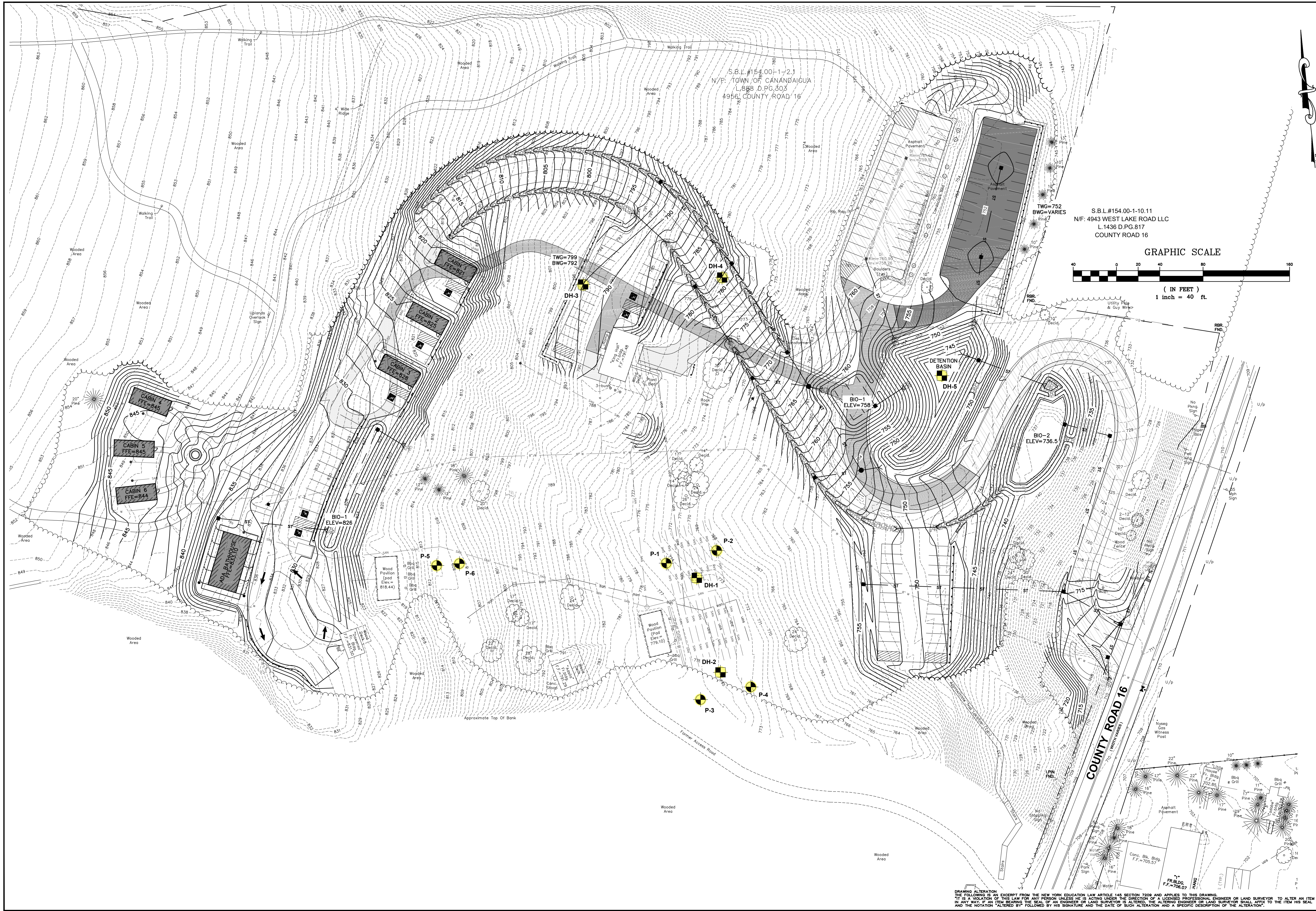
GRAPHIC SCALE



(IN FEET)
1 inch = 40 ft.

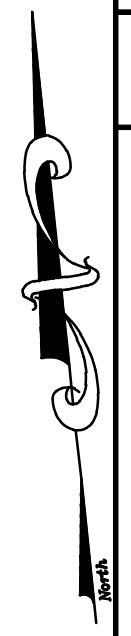
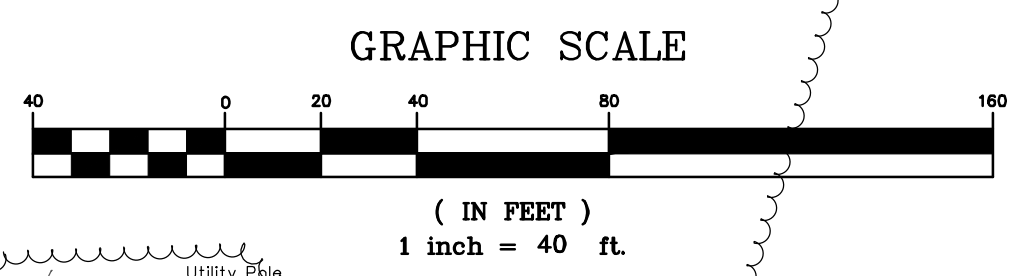
Project Title:		ONANDA PARK - UPLAND AREA IMPROVEMENTS 4965 COUNTY ROAD 16 CANANDAIGUA, NEW YORK	
Drawn By:	JHT	Checked By:	SWS & TUF
Scale:	1"=40'	Date:	2/8/2023
Drawing Title:		GRADING & ESC PLAN	
No.:	Revisions and Descriptions	By:	Date
Copyright © 2024 MRB Group All Rights Reserved			
Project No.		0300.22014	
Sheet No.		G-4	
of			
<p>MRB group Engineering, Architecture & Surveying, D.P.C. The Calver Road Armory, 145 Calver Road, Suite 160, Rochester, New York 14620 Phone: 585-381-9250 www.mrbgroup.com</p>			

DRAWING ALTERATION
THE FOLLOWING IS AN EXCERPT FROM THE NEW YORK EDUCATION LAW ARTICLE 145 SECTION 7209 AND APPLIES TO THIS DRAWING:
"IT IS A VIOLATION OF THIS LAW FOR ANY PERSON UNLESS HE IS ACTING UNDER THE DIRECTION OF A LICENSED PROFESSIONAL ENGINEER OR LAND SURVEYOR TO ALTER AN ITEM IN ANY MANNER IF AN ITEM BEARING HIS SEAL OR THAT OF AN ENGINEER OR LAND SURVEYOR IS ALTERED. THE ALTERING ENGINEER OR LAND SURVEYOR SHALL AFFIX TO THE ITEM HIS SEAL AND THE NOTATION "ALTERED BY" FOLLOWED BY HIS SIGNATURE AND THE DATE OF SUCH ALTERATION AND A SPECIFIC DESCRIPTION OF THE ALTERATION."



S.B.L.#154.00-1-2.1
 N/P: TOWN OF CANANDAIGUA
 L.888 D.PG.303
 4956 COUNTY ROAD 16

S.B.L.#154.00-1-10.11
 N/F: 4943 WEST LAKE ROAD LLC
 L.1436 D.PG.817
 COUNTY ROAD 16



Project Title: ONANDA PARK - UPLAND AREA IMPROVEMENTS 4965 COUNTY ROAD 16 CANANDAIGUA, NEW YORK		Drawing Title: PERC TEST PLAN	
Drawn By: JHT	Checked By: SWS & TUF	Date: 2/8/2023	No. Revisions and Descriptions
Scale: 1"=40'	Date: 2/8/2023		By
Project No. 0300.22014			Date
Sheet No. PERC			Copyright © 2024 MRB Group All Rights Reserved

MRB group
 Engineering, Architecture & Surveying, D.P.C.
 The Calver Road Armory, 145 Calver Road,
 Suite 1601, Rochester, New York 14620
 Phone: 585-381-9250
 www.mrbgroup.com

DRAWING ALTERATION: THE FOLLOWING IS AN EXCERPT FROM THE NEW YORK EDUCATION LAW ARTICLE 145 SECTION 7209 AND APPLIES TO THIS DRAWING. IT IS A VIOLATION OF THIS LAW FOR ANY PERSON UNLESS HE IS ACTING UNDER THE DIRECTION OF A LICENSED PROFESSIONAL ENGINEER OR LAND SURVEYOR TO ALTER AN ITEM IN ANY MANNER OR TO BEAR THE SEAL OF AN ENGINEER OR LAND SURVEYOR IF ALTERED. THE ALTERING ENGINEER OR LAND SURVEYOR SHALL AFFIX TO THE ITEM HIS SEAL AND THE NOTATION "ALTERED BY" FOLLOWED BY HIS SIGNATURE AND THE DATE OF SUCH ALTERATION AND A SPECIFIC DESCRIPTION OF THE ALTERATION.